



SAW Components

Data Sheet B7831





SAW Components

B7831

Low-Loss Filter for Mobile Communication

1765,00 MHz

Data Sheet



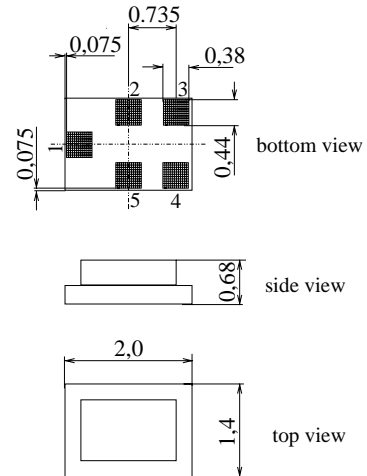
Chip sized SAW package

Features

- Low-loss RF filter for mobile telephone Korean PCS systems, transmit path
- Usable passband 30 MHz
- No matching network required for operation at 50 Ω
- Ceramic package for **Surface Mounted technology (SMT)**

Terminals

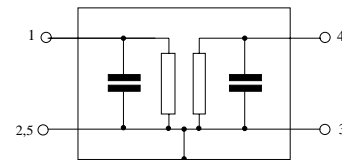
- Ni, gold-plated



Dimensions in mm, approx. weight 0,007 g

Pin configuration

- 1 Input
- 4 Output
- 2,3,5 To be grounded



Type	Ordering code	Marking and Package according to	Packing according to
B7831	B39182-B7831-C710	C61157-A7-A111	F61074-V8151-Z000

Electrostatic Sensitive Device (ESD)

Maximum ratings

Operable temperature range	T	- 30/+ 85	°C	CDMA signal
Storage temperature range	T_{stg}	- 40/+ 85	°C	
DC voltage	V_{DC}	0	V	
Input power max.	P_{IN}	10	dBm	



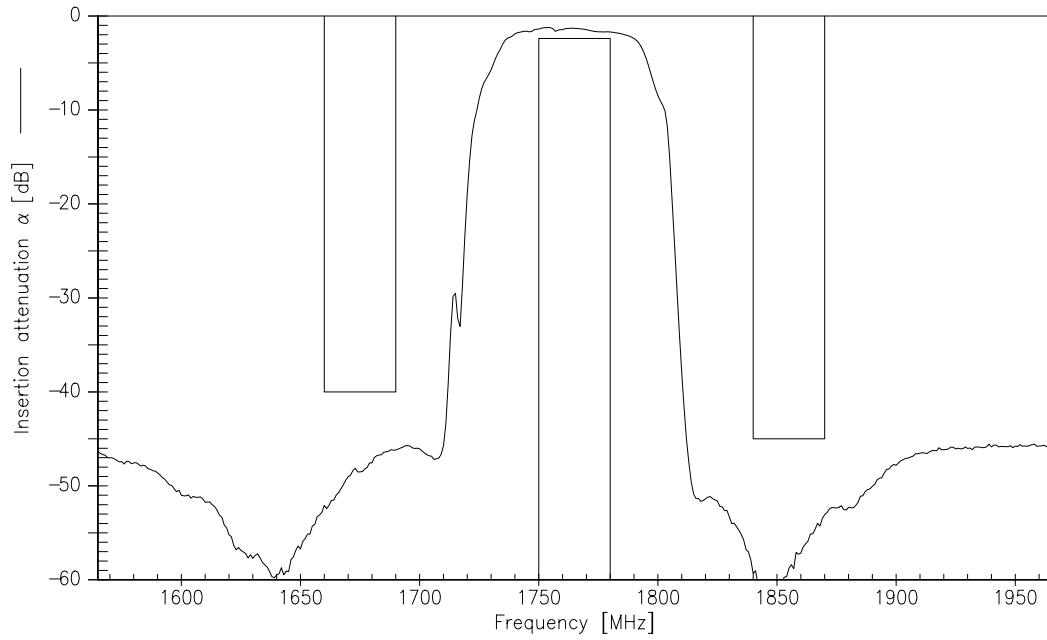
Characteristics

Operating temperature range: $T = -30$ to $+85^{\circ}\text{C}$
 Terminating source impedance: $Z_S = 50\ \Omega$
 Terminating load impedance: $Z_L = 50\ \Omega$

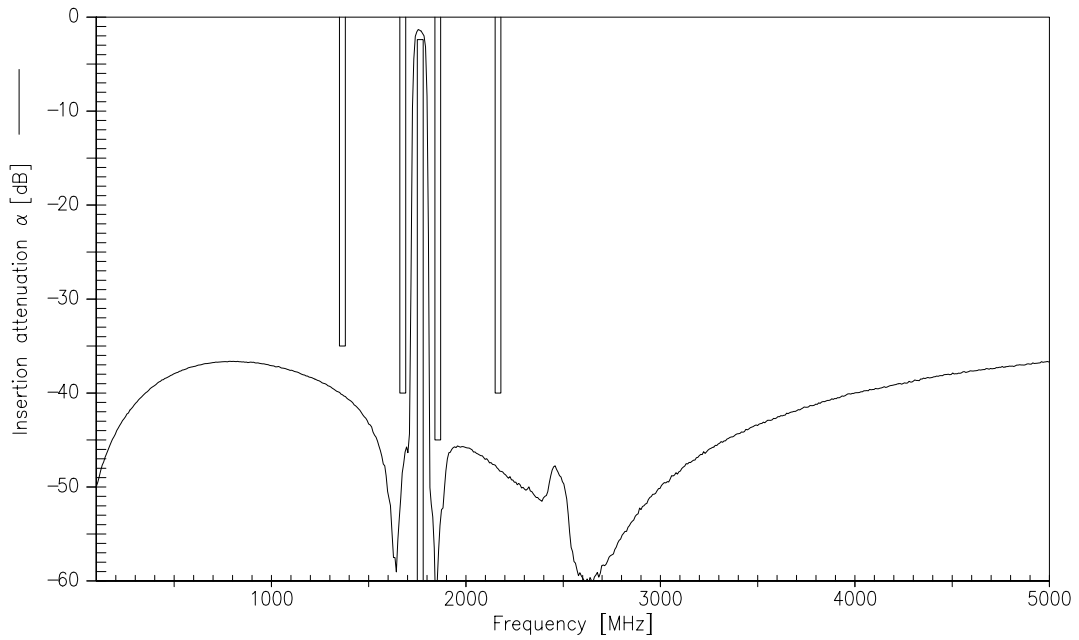
			min.	typ.	max.	
Center frequency	f_c		—	1765,0	—	MHz
Maximum insertion attenuation	α_{\max}	1750,0 ... 1780,0 MHz	—	1,8	2,4	dB
Amplitude ripple (p-p)	$\Delta\alpha$	1750,0 ... 1780,0 MHz	—	0,6	1,2	dB
VSWR		1750,0 ... 1780,0 MHz	—	1,5	1,9	
Attenuation	α	1350,0 ... 1380,0 MHz	35,0	40,0	—	dB
		1660,0 ... 1690,0 MHz	40,0	46,0	—	dB
		1840,0 ... 1870,0 MHz	45,0	52,0	—	dB
		2150,0 ... 2180,0 MHz	40,0	47,0	—	dB



Transfer function (measurement)



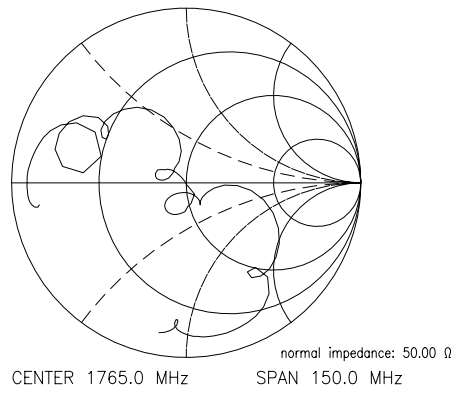
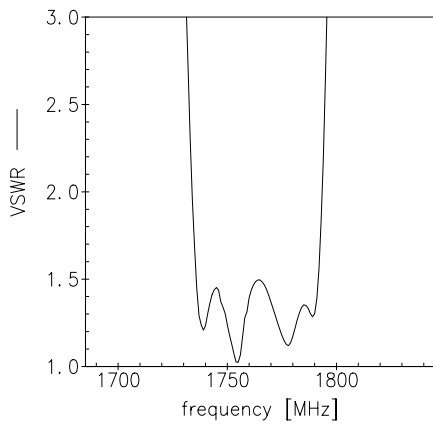
Transfer function (wideband measurement)



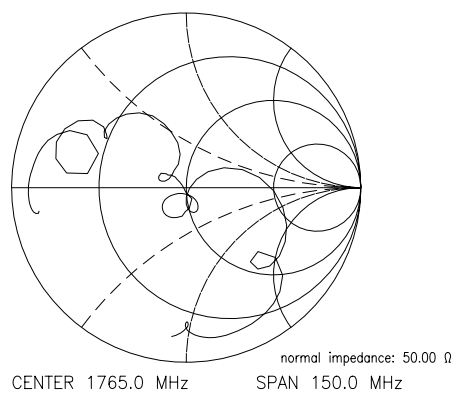
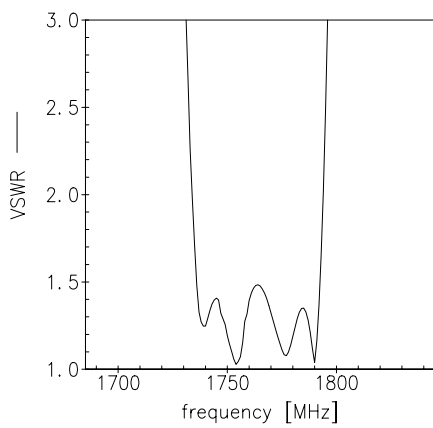


Matching (measurement)

S_{11}



S_{22}





SAW Components

B7831

Low-Loss Filter for Mobile Communication

1765,00 MHz

Data Sheet



Published by EPCOS AG

Surface Acoustic Wave Components Division, SAW MC WT

P.O. Box 80 17 09, 81617 Munich, GERMANY

© EPCOS AG 2002. Reproduction, publication and dissemination of this brochure and the information contained therein without EPCOS' prior express consent is prohibited.

Purchase orders are subject to the General Conditions for the Supply of Products and Services of the Electrical and Electronics Industry recommended by the ZVEI (German Electrical and Electronic Manufacturers' Association), unless otherwise agreed.

This brochure replaces the previous edition.

For questions on technology, prices and delivery please contact the Sales Offices of EPCOS AG or the international Representatives.

Due to technical requirements components may contain dangerous substances. For information on the type in question please also contact one of our Sales Offices.