



SAW Components

Data Sheet B7836

Data Sheet

A stylized, glowing globe with a grid of latitude and longitude lines, set against a dark background. The word "EPCOS" is written in large, white, glowing letters across the globe, following its curvature.



SAW Components

B7836

Low-Loss Filter for Mobile Communication

1501,5 MHz

Preliminary Data



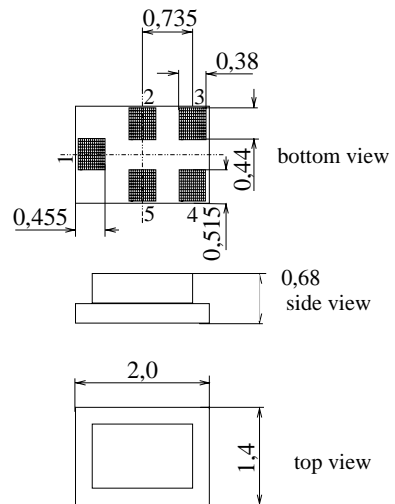
Chip sized SAW package QCS5C

Features

- Low-loss RF filter for PDC system, receive path
- Small insertion attenuation
- Low amplitude ripple
- Package for **Surface Mounted Technology (SMT)**
- Chip Sized SAW Package (CSSP)

Terminals

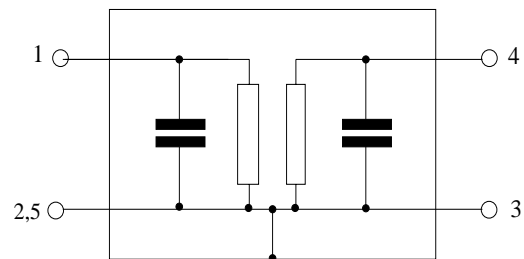
- Gold-plated Ni



Dimensions in mm, approx. weight 0,007 g

Pin configuration

- 1 Input
- 4, Output
- 2, 3, 5 To be grounded



Type	Ordering code	Marking and Package according to	Packing according to
B7836	B39152-B7836-C710	C61157-A7-A111	F61074-V8151-Z000

Electrostatic Sensitive Device (ESD)

Maximum ratings

Operating temperature range	T	- 20/+ 85	°C	duty cycle 1:3, source and load impedance 50 Ω
Storage temperature range	T_{stg}	- 40/+ 85	°C	
DC voltage	V_{DC}	3	V	
Source power	P_S	13	dBm	



SAW Components

B7836

Low-Loss Filter for Mobile Communication

1501,5 MHz

Preliminary Data



Characteristics

Operating temperature range: $T = +25 \pm 2^\circ\text{C}$
 Terminating source impedance: $Z_S = 50 \Omega$
 Terminating load impedance: $Z_L = 50 \Omega$

				min.	typ.	max.	
Center frequency	f_C			—	1501,5	—	MHz
Maximum insertion attenuation	α_{\max}			—	1,5	2,0	dB
		1487,0 ... 1516,0	MHz				
Amplitude ripple (p-p)	$\Delta\alpha$			—	0,3	0,8	dB
		1487,0 ... 1516,0	MHz				
Absolute attenuation	α						
		1227,0 ... 1256,0	MHz	35	36	—	dB
		1241,5	MHz	35	36	—	dB
		1357,0 ... 1386,0	MHz	25	30	—	dB
		1371,5	MHz	25	30	—	dB
		1422,0 ... 1451,0	MHz	21	23	—	dB
		1451,0 ... 1468,0	MHz	11	15	—	dB
		1552,0 ... 1581,0	MHz	13	16	—	dB
		1617,0 ... 1646,0	MHz	22	27	—	dB
		1747,0 ... 1776,0	MHz	28	34	—	dB



SAW Components

B7836

Low-Loss Filter for Mobile Communication

1501,5 MHz

Preliminary Data



Characteristics

Operating temperature range: $T = -20$ to $+85$ °C
 Terminating source impedance: $Z_S = 50 \Omega$
 Terminating load impedance: $Z_L = 50 \Omega$

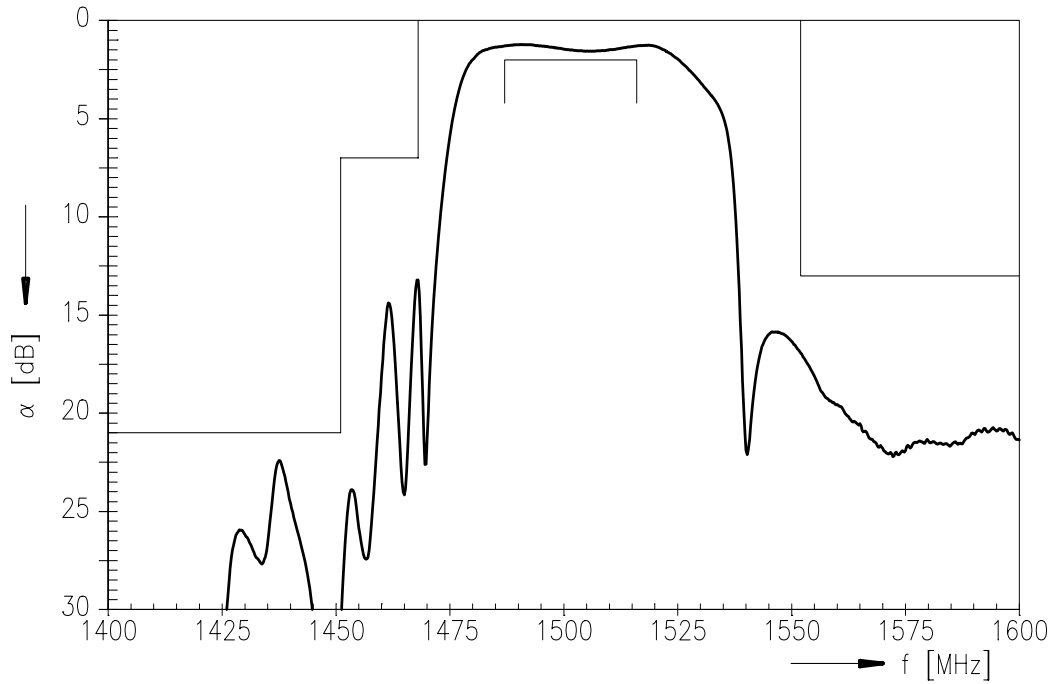
				min.	typ.	max.	
Center frequency	f_C			—	1501,5	—	MHz
Maximum insertion attenuation	α_{max}			—	1,5	2,0	dB
		1487,0 ... 1516,0	MHz				
Amplitude ripple (p-p)	$\Delta\alpha$			—	0,3	0,8	dB
		1487,0 ... 1516,0	MHz				
Absolute attenuation	α						
		1227,0 ... 1256,0	MHz	35	36	—	dB
		1241,5	MHz	35	36	—	dB
		1357,0 ... 1386,0	MHz	25	30	—	dB
		1371,5	MHz	25	30	—	dB
		1422,0 ... 1451,0	MHz	21	23	—	dB
		1451,0 ... 1468,0	MHz	7	13	—	dB
		1552,0 ... 1581,0	MHz	13	16	—	dB
		1617,0 ... 1646,0	MHz	22	25	—	dB
		1747,0 ... 1776,0	MHz	28	34	—	dB



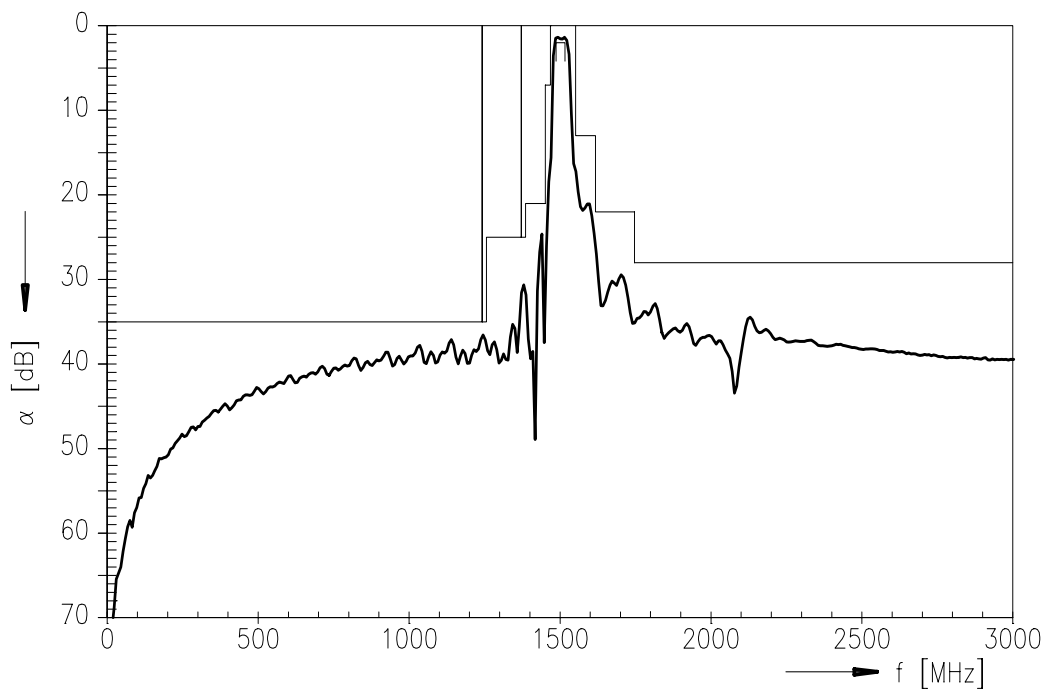
Preliminary Data



Transfer function (pass band) :



Transfer function (broad band) :





SAW Components

B7836

Low-Loss Filter for Mobile Communication

1501,5 MHz

Preliminary Data



Published by EPCOS AG

SAW MC WT, P.O. Box 80 17 09, 81617 Munich, GERMANY

TEL ++49 89 636 09, FAX ++49 89 636 2 26 89

© EPCOS AG 2002. Reproduction, publication and dissemination of this brochure and the information contained therein without EPCOS' prior express consent is prohibited.

Purchase orders are subject to the General Conditions for the Supply of Products and Services of the Electrical and Electronics Industry recommended by the ZVEI (German Electrical and Electronic Manufacturers' Association), unless otherwise agreed.

This brochure replaces the previous edition.

For questions on technology, prices and delivery please contact the Sales Offices of EPCOS AG or the international Representatives.

Due to technical requirements components may contain dangerous substances. For information on the type in question please also contact one of our Sales Offices.