



# SAW Components

Data Sheet B7844





**SAW Components**

**B7844**

**Low-Loss Filter for Mobile Communication**

**1842,5 MHz**

**Data Sheet**



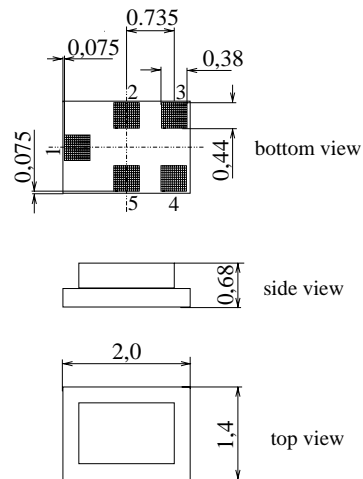
Chip sized SAW package QCS5E

**Features**

- Low-loss RF filter for mobile telephone PCN systems, receive path
- Very low insertion attenuation
- Low amplitude ripple
- Usable passband 75 MHz
- Unbalanced to balanced operation
- Impedance transformation from 50 Ω to 150 Ω
- Suitable for GPRS class 1 to 12
- Package for **Surface Mount Technology (SMT)**
- Pb-free

**Terminals**

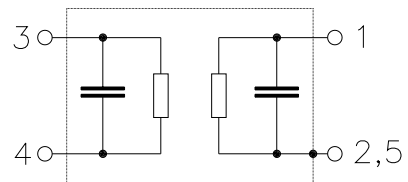
- Ni, gold-plated



Dimensions in mm, approx. weight 0,007 g

**Pin configuration**

- |     |                   |
|-----|-------------------|
| 1   | Input, unbalanced |
| 3,4 | Output, balanced  |
| 2,5 | Case ground       |



Type	Ordering code	Marking and Package according to	Packing according to
B7844	B39182-B7844-K410	C61157-A7-A131	F61074-V8151-Z000

Electrostatic Sensitive Device (ESD)

**Maximum ratings**

Operable temperature range	$T$	- 20 / + 75	°C	
Storage temperature range	$T_{stg}$	- 40 / + 85	°C	
DC voltage	$V_{DC}$	5	V	
ESD voltage	$V_{ESD}$	50*	V	Machine Model, 10 pulses
Input Power at				
GSM850, GSM900	$P_{IN}$	15	dBm	peak power of GSM signal, duty cycle 4:8
GSM1800, GSM1900	$P_{IN}$	12	dBm	
Tx bands				

\* - acc. to JESD22-A115A (Machine Model), 10 negative & 10 positive pulses



**SAW Components**

**B7844**

**Low-Loss Filter for Mobile Communication**

**1842,5 MHz**

Data Sheet



**Characteristics**

Operating temperature range:  $T = 25^{\circ}\text{C} \pm 2^{\circ}\text{C}$   
 Terminating source impedance:  $Z_S = 50 \Omega$   
 Terminating load impedance:  $Z_L = 150 \Omega \parallel 15 \text{ nH (balanced)}$

		min.	typ.	max.	
<b>Center frequency</b>	$f_C$	—	1842,5	—	MHz
<b>Maximum insertion attenuation</b>	$\alpha_{\text{max}}$	—	1,9	2,1	dB
1805,0 ... 1880,0 MHz					
<b>Amplitude ripple (p-p)</b>	$\Delta\alpha$	—	0,6	1,0	dB
1805,0 ... 1880,0 MHz					
<b>Input VSWR</b>		—	2,1	2,6	
1805,0 ... 1880,0 MHz					
<b>Output VSWR</b>		—	2,0	2,6	
1805,0 ... 1880,0 MHz					
<b>Output amplitude balance (<math> S_{31}/S_{21} </math>)</b>		-1,0	-0,5 / +0,5	1,0	dB
1805,0 ... 1880,0 MHz					
<b>Output phase balance (<math>\phi(S_{31}) - \phi(S_{21}) + 180^{\circ}</math>)</b>		-10	-1 / +3	10	°
1805,0 ... 1880,0 MHz					
<b>Attenuation</b>	$\alpha$				
0,0 ... 902,0 MHz		30	50	—	dB
902,0 ... 940,0 MHz		45	50	—	dB
940,0 ... 1705,0 MHz		28	33	—	dB
1705,0 ... 1785,0 MHz		12	16	—	dB
1920,0 ... 1980,0 MHz		15	18	—	dB
1980,0 ... 2030,0 MHz		24	28	—	dB
2030,0 ... 2400,0 MHz		28	32	—	dB
2400,0 ... 2500,0 MHz		32	37	—	dB
2500,0 ... 2775,0 MHz		27	30	—	dB
2775,0 ... 2880,0 MHz		40	47	—	dB
2880,0 ... 3610,0 MHz		28	46	—	dB
3610,0 ... 3760,0 MHz		40	46	—	dB
3760,0 ... 5415,0 MHz		28	47	—	dB
5415,0 ... 5640,0 MHz		35	44	—	dB
5640,0 ... 6000,0 MHz		28	44	—	dB



**SAW Components**

**B7844**

**Low-Loss Filter for Mobile Communication**

**1842,5 MHz**

Data Sheet



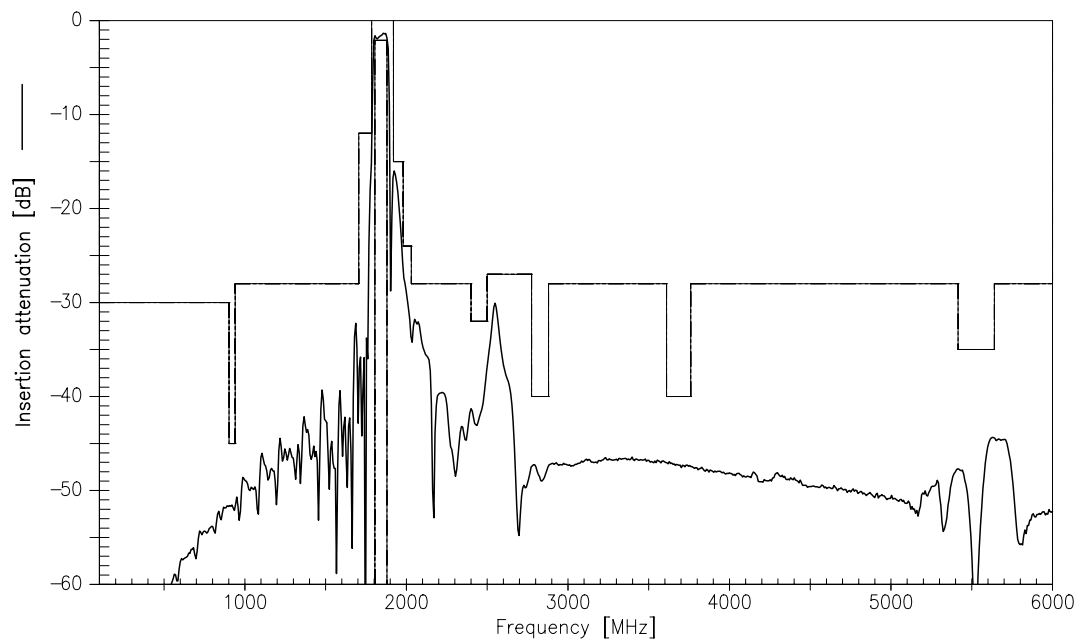
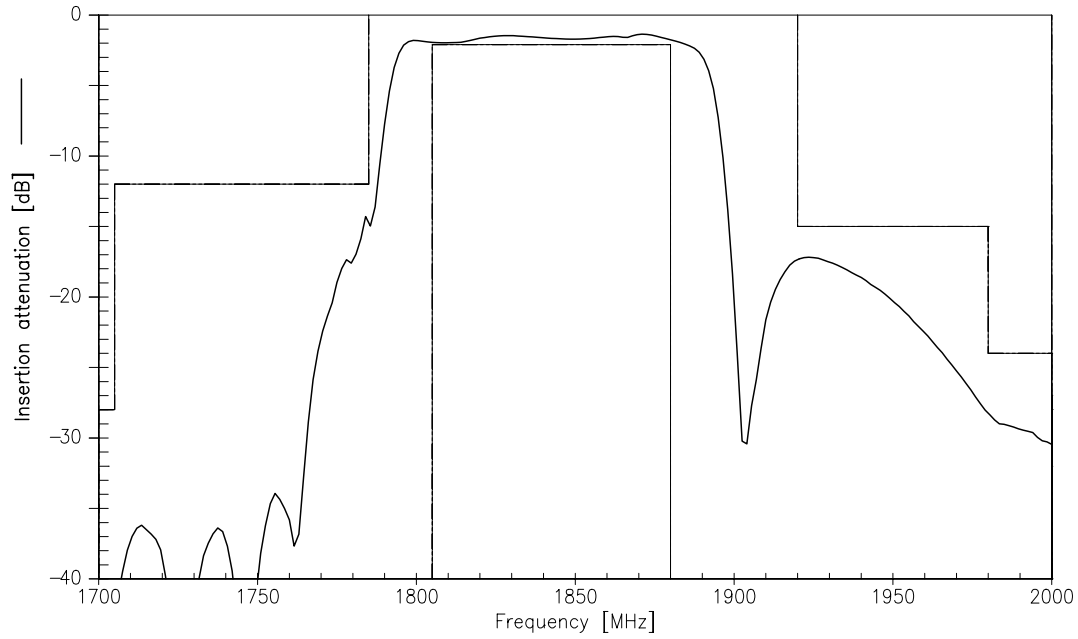
**Characteristics**

Operating temperature range:  $T = -20$  to  $+75$  °C  
 Terminating source impedance:  $Z_S = 50 \Omega$   
 Terminating load impedance:  $Z_L = 150 \Omega \parallel 15$  nH (balanced)

		min.	typ.	max.	
<b>Center frequency</b>	$f_C$	—	1842,5	—	MHz
<b>Maximum insertion attenuation</b>	$\alpha_{max}$	—	1,9	2,3	dB
1805,0 ... 1880,0 MHz					
<b>Amplitude ripple (p-p)</b>	$\Delta\alpha$	—	0,6	1,3	dB
1805,0 ... 1880,0 MHz					
<b>Input VSWR</b>		—	2,1	2,6	
1805,0 ... 1880,0 MHz					
<b>Output VSWR</b>		—	2,0	2,6	
1805,0 ... 1880,0 MHz					
<b>Output amplitude balance (<math> S_{31}/S_{21} </math>)</b>		-1,0	-0,7 / +0,5	1,0	dB
1805,0 ... 1880,0 MHz					
<b>Output phase balance (<math>\phi(S_{31})-\phi(S_{21})+180^\circ</math>)</b>		-10	-1 / +4	10	°
1805,0 ... 1880,0 MHz					
<b>Attenuation</b>	$\alpha$				
0,0 ... 902,0 MHz		30	50	—	dB
902,0 ... 940,0 MHz		45	50	—	dB
940,0 ... 1705,0 MHz		28	33	—	dB
1705,0 ... 1785,0 MHz		10	14	—	dB
1920,0 ... 1980,0 MHz		15	18	—	dB
1980,0 ... 2030,0 MHz		23	28	—	dB
2030,0 ... 2400,0 MHz		28	32	—	dB
2400,0 ... 2500,0 MHz		32	37	—	dB
2500,0 ... 2775,0 MHz		27	30	—	dB
2775,0 ... 2880,0 MHz		40	47	—	dB
2880,0 ... 3610,0 MHz		28	46	—	dB
3610,0 ... 3760,0 MHz		40	46	—	dB
3760,0 ... 5415,0 MHz		28	47	—	dB
5415,0 ... 5640,0 MHz		35	44	—	dB
5640,0 ... 6000,0 MHz		28	44	—	dB



Transfer function





**SAW Components**

**B7844**

**Low-Loss Filter for Mobile Communication**

**1842,5 MHz**

Data Sheet



**Published by EPCOS AG**

**Surface Acoustic Wave Components Division, SAW MC WT**

**P.O. Box 80 17 09, 81617 Munich, GERMANY**

© EPCOS AG 2003. Reproduction, publication and dissemination of this brochure and the information contained therein without EPCOS' prior express consent is prohibited.

Purchase orders are subject to the General Conditions for the Supply of Products and Services of the Electrical and Electronics Industry recommended by the ZVEI (German Electrical and Electronic Manufacturers' Association), unless otherwise agreed.

This brochure replaces the previous edition.

For questions on technology, prices and delivery please contact the Sales Offices of EPCOS AG or the international Representatives.

Due to technical requirements components may contain dangerous substances. For information on the type in question please also contact one of our Sales Offices.