

BAS40WS

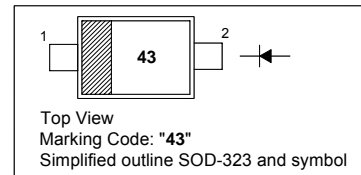
SURFACE MOUNT SCHOTTKY BARRIER DIODE

Features

- Low forward voltage
- Fast switching

PINNING

| PIN | DESCRIPTION |
|-----|-------------|
| 1 | Cathode |
| 2 | Anode |

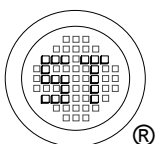


Absolute Maximum Ratings ($T_a = 25\text{ }^\circ\text{C}$)

| Parameter | Symbol | Value | Unit |
|--|-----------|---------------|------------------|
| Repetitive Peak Reverse Voltage | V_{RRM} | 40 | V |
| DC Blocking Voltage | V_R | 40 | V |
| Forward Continuous Current | I_F | 200 | mA |
| Peak Forward Surge Current (at $t_p = 8.3\text{ ms}$) | I_{FSM} | 600 | mA |
| Junction Temperature | T_J | 150 | $^\circ\text{C}$ |
| Storage Temperature Range | T_S | - 55 to + 150 | $^\circ\text{C}$ |

Characteristics at $T_a = 25\text{ }^\circ\text{C}$

| Parameter | Symbol | Min. | Max. | Unit |
|---|----------------|--------|-----------|--------|
| Forward Voltage at $I_F = 1\text{ mA}$ at $I_F = 40\text{ mA}$ | V_F V_F | - - | 0.38 1 | V V |
| Reverse Current at $V_R = 30\text{ V}$ | I_R | - | 200 | nA |
| Reverse Breakdown Voltage at $I_R = 10\text{ }\mu\text{A}$ | $V_{(BR)R}$ | 40 | - | V |
| Reverse Recovery Time at $I_F = I_R = 10\text{ mA}$ to $I_R = 1\text{ mA}$, $R_L = 100\text{ }\Omega$ | t_{rr} | - | 5 | ns |
| Capacitance at $V_R = 0\text{ V}$, $f = 1\text{ MHz}$ | C_j | - | 5 | pF |



SEMTECH ELECTRONICS LTD.

(Subsidiary of Sino-Tech International Holdings Limited, a company listed on the Hong Kong Stock Exchange, Stock Code: 724)



ISO/TS 16949 : 2002
Certificate No. 05103



ISO 14001:2004
Certificate No. 71116



ISO 9001:2000
Certificate No. 0506098

Dated : 20/09/2008

BAS40WS

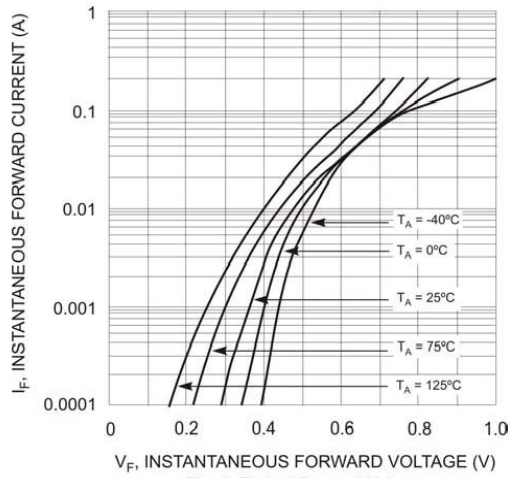


Fig. 1 Typical Forward Voltage

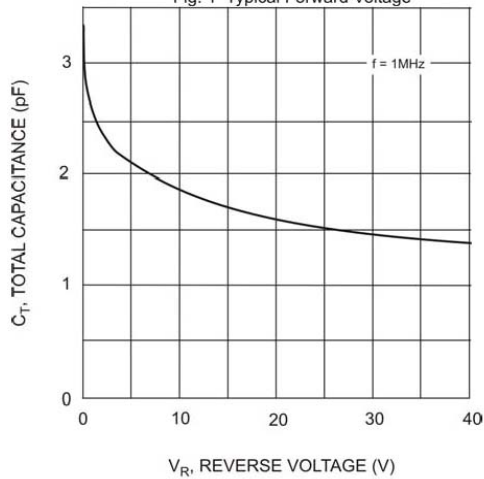


Fig. 3 Typical Capacitance

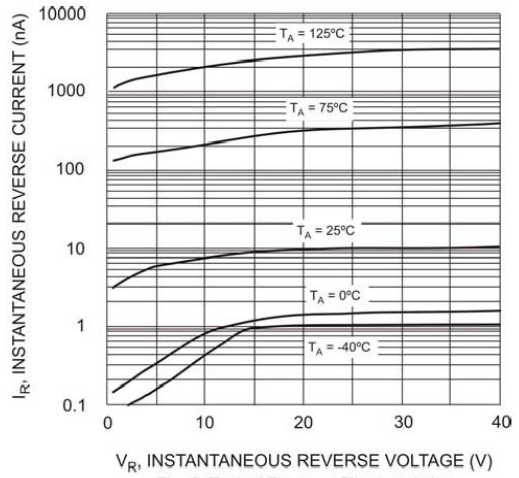
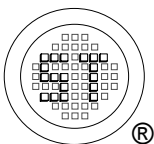


Fig. 2 Typical Reverse Characteristics



SEMTECH ELECTRONICS LTD.
 (Subsidiary of Sino-Tech International Holdings Limited, a company listed on the Hong Kong Stock Exchange, Stock Code: 724)



ISO/TS 16949 : 2002
 Certificate No. 05103



ISO 14001:2004
 Certificate No. 71116



ISO 9001:2000
 Certificate No. 0506098

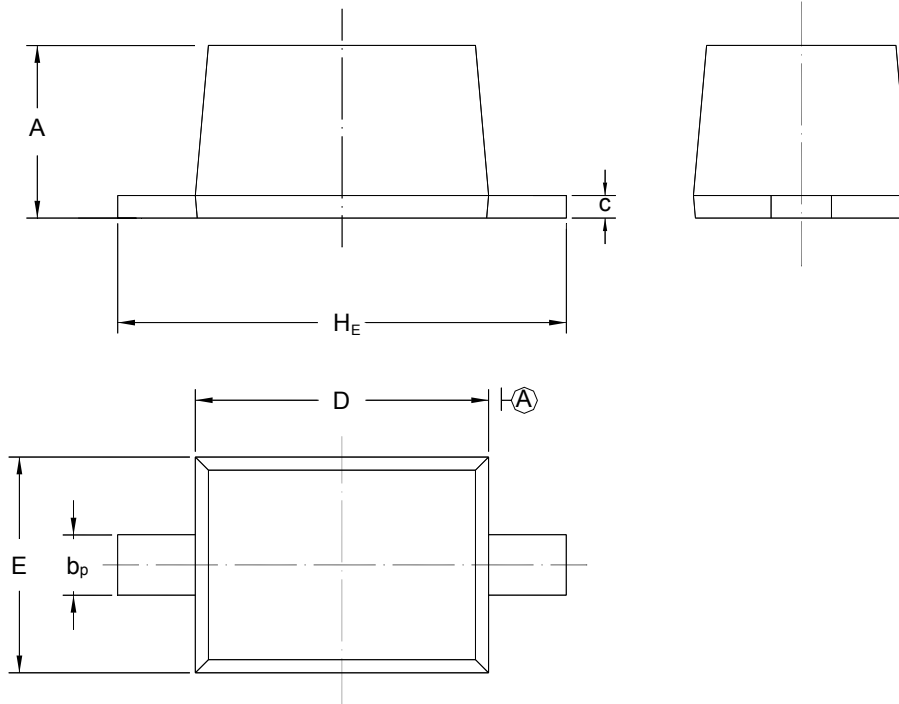
Dated : 20/09/2008

BAS40WS

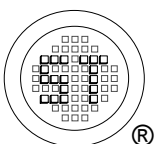
PACKAGE OUTLINE

Plastic surface mounted package; 2 leads

SOD-323



| UNIT | A | b _p | C | D | E | H _E |
|------|--------------|----------------|--------------|--------------|--------------|----------------|
| mm | 1.10 0.80 | 0.40 0.25 | 0.15 0.00 | 1.80 1.60 | 1.35 1.15 | 2.80 2.30 |



SEMTECH ELECTRONICS LTD.

(Subsidiary of Sino-Tech International Holdings Limited, a company listed on the Hong Kong Stock Exchange, Stock Code: 724)



ISO/TS 16949 : 2002
Certificate No. 05103



ISO 14001:2004
Certificate No. 71116



ISO 9001:2000
Certificate No. 0506098

Dated : 20/09/2008