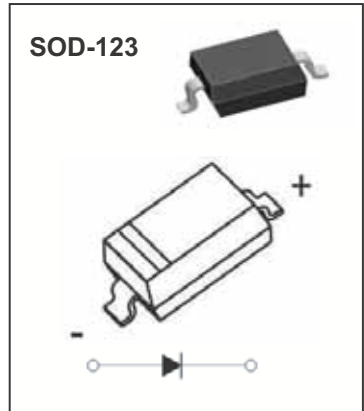


SCHOTTKY BARRIER DIODE



FEATURES

- High breakdown voltage
- Low turn-on voltage
- Guard ring construction for transient protection
- P/N suffix V means Halogen-free
- P/N suffix V means AEC-Q101 qualified

MARKING: S9



The marking bar indicates the cathode
Solid dot = Green molding compound device, if none, the normal device.

Maximum Ratings @ $T_a = 25^\circ\text{C}$

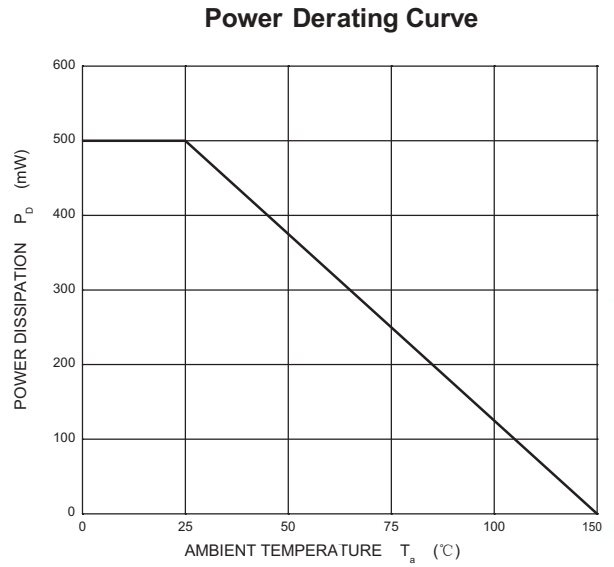
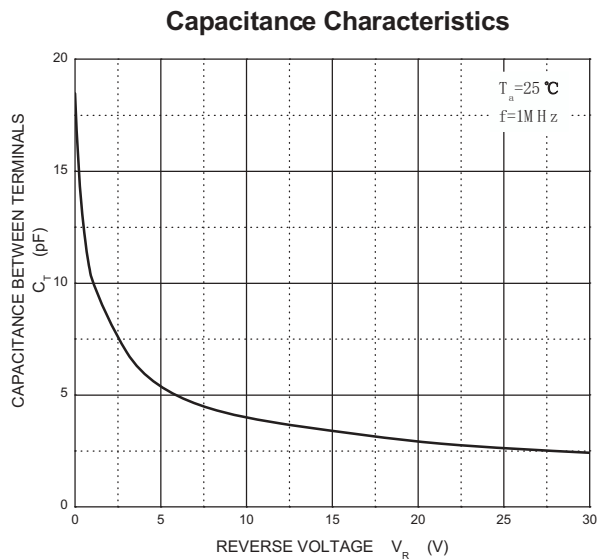
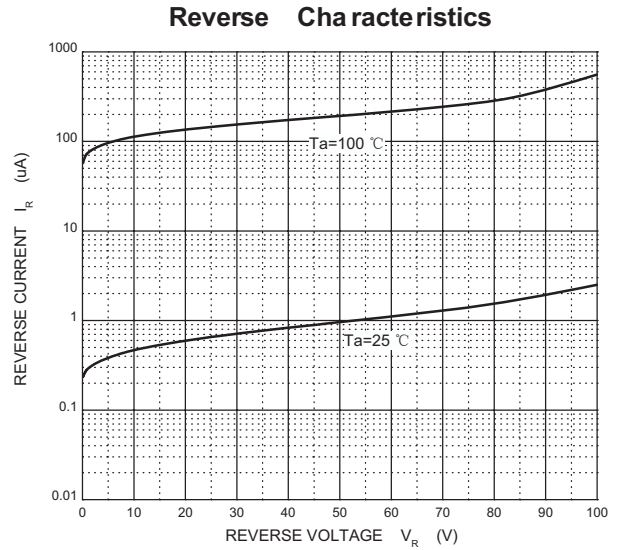
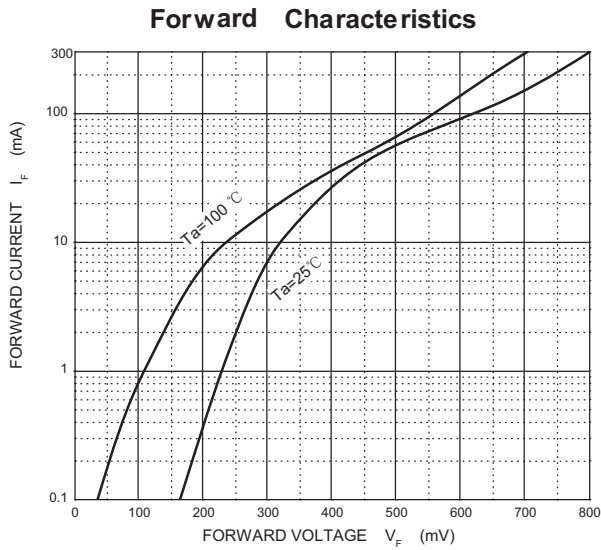
| Parameter | Symbol | Limit | Unit |
|---|-----------------|----------|---------------------------|
| Peak repetitive peak reverse voltage | V_{RRM} | 100 | V |
| Working peak reverse voltage | V_{RWM} | | |
| Forward continuous current | I_F | 150 | mA |
| Repetitive peak forward current (Note 1) @ $t_p < 1.0\text{s}$, Duty Cycle < 50% | I_{FRM} | 350 | mA |
| Non-repetitive Peak Forward surge current @ $t = 8.3\text{ms}$ | I_{FSM} | 750 | mA |
| Typical Current Squared Time | I^2T | 0.002 | A^2S |
| Power dissipation | P_D | 500 | mW |
| Thermal resistance junction to ambient air | $R_{\theta JA}$ | 200 | $^\circ\text{C}/\text{W}$ |
| Junction temperature | T_j | -55~+150 | $^\circ\text{C}$ |
| Storage temperature | T_{STG} | -55~+150 | $^\circ\text{C}$ |

ELECTRICAL CHARACTERISTICS ($T_a = 25^\circ\text{C}$ unless otherwise specified)

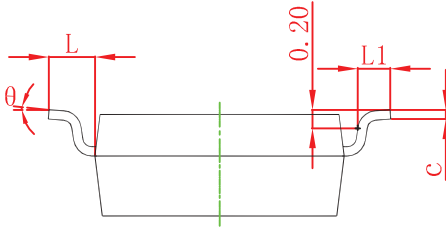
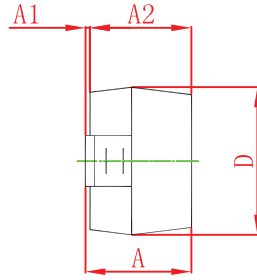
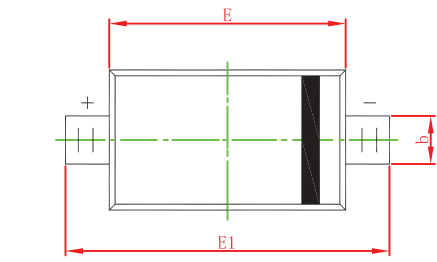
| Parameter | Symbol | Test Conditions | Min | Typ | Max | Unit |
|------------------------------------|--------|------------------------------------|-----|-----|------|---------------|
| Reverse breakdown voltage (Note 2) | V_R | $I_R = 100\mu\text{A}$ | 100 | | | V |
| Reverse voltage leakage current | I_R | $V_{R1} = 1.5\text{V}$ | | | 0.3 | μA |
| | | $V_{R2} = 10\text{V}$ | | | 0.5 | |
| | | $V_{R3} = 50\text{V}$ | | | 1 | |
| | | $V_{R4} = 75\text{V}$ | | | 2 | |
| Forward voltage (Note 2) | V_F | $I_{F1} = 0.1\text{mA}$ | | | 0.25 | V |
| | | $I_{F2} = 10\text{mA}$ | | | 0.45 | |
| | | $I_{F3} = 250\text{mA}$ | | | 1 | |
| Diode capacitance | C_T | $V_R = 0, f = 1\text{MHz}$ | | 20 | | pF |
| | | $V_R = 1\text{V}, f = 1\text{MHz}$ | | 12 | | |

Notes: 1. Part mounted on FR-4 board with recommended pad layout.
2. Short duration pulse test used to minimize self-heating effect.

RATING AND CHARACTERISTICS CURVES (BAT46W)

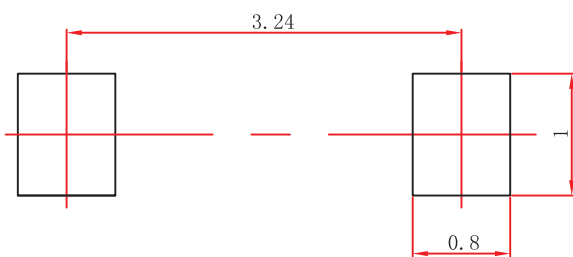


SOD-123 Package Outline Dimensions



| Symbol | Dimensions In Millimeters | | Dimensions In Inches | |
|--------|---------------------------|-------|----------------------|-------|
| | Min | Max | Min | Max |
| A | 1.050 | 1.250 | 0.041 | 0.049 |
| A1 | 0.000 | 0.100 | 0.000 | 0.004 |
| A2 | 1.050 | 1.150 | 0.041 | 0.045 |
| b | 0.450 | 0.650 | 0.018 | 0.026 |
| c | 0.080 | 0.150 | 0.003 | 0.006 |
| D | 1.500 | 1.700 | 0.059 | 0.067 |
| E | 2.600 | 2.800 | 0.102 | 0.110 |
| E1 | 3.550 | 3.850 | 0.140 | 0.152 |
| L | 0.500 REF | | 0.020 REF | |
| L1 | 0.250 | 0.450 | 0.010 | 0.018 |
| θ | 0° | 8° | 0° | 8° |

SOD-123 Suggested Pad Layout

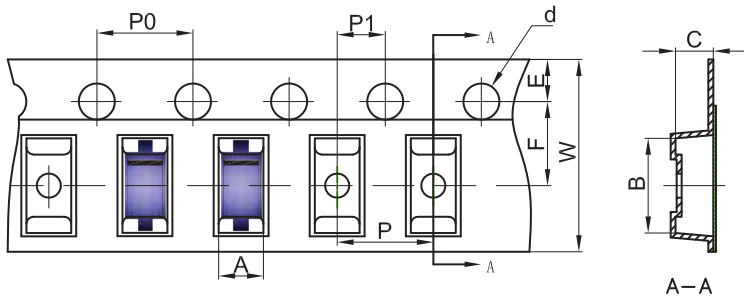


Note:

1. Controlling dimension: in millimeters.
2. General tolerance: $\pm 0.05\text{mm}$.
3. The pad layout is for reference purposes only.

SOD-123 Tape and Reel

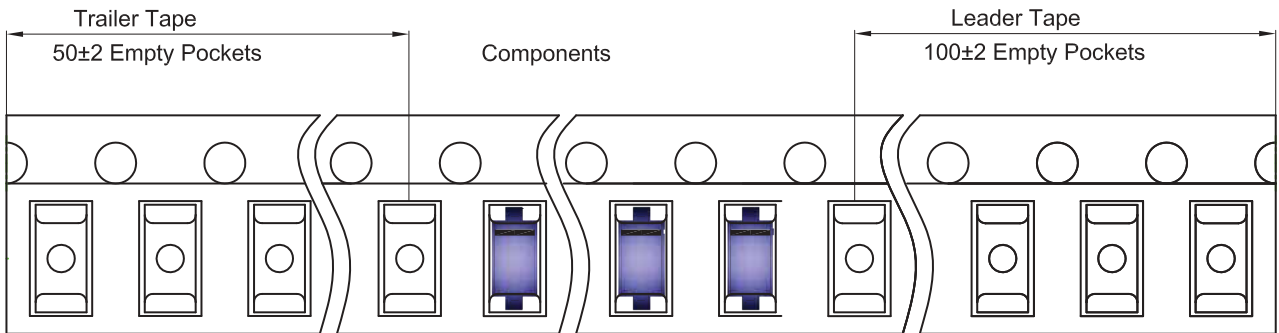
SOD-123 Embossed Carrier Tape



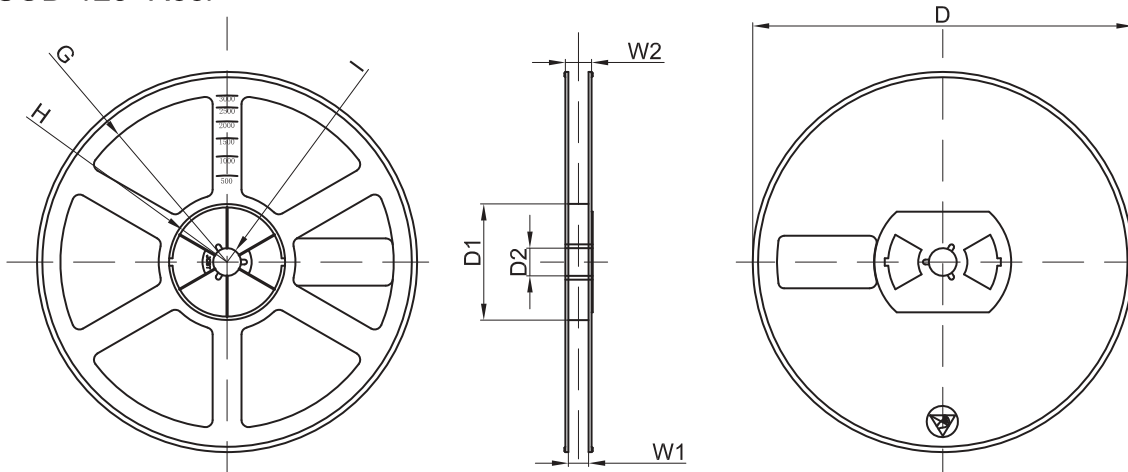
Packaging Description:
 SOD-123 parts are shipped in tape. The carrier tape is made from a dissipative (carbon filled) polycarbonate resin. The cover tape is a multilayer film (Heat Activated Adhesive in nature) primarily composed of polyester film, adhesive layer, sealant, and anti-static sprayed agent. These reeled parts in standard option are shipped with 3,000 units per 7" or 17.8cm diameter reel. The reels are clear in color and is made of polystyrene plastic (anti-static coated).

| Dimensions are in millimeter | | | | | | | | | | |
|------------------------------|------|------|------|-------|------|------|------|------|------|------|
| Pkg type | A | B | C | d | E | F | P0 | P | P1 | W |
| SOD-123 | 1.85 | 3.95 | 1.57 | Ø1.55 | 1.75 | 3.50 | 4.00 | 4.00 | 2.00 | 8.00 |

SOD-123 Tape Leader and Trailer



SOD-123 Reel



| Dimensions are in millimeter | | | | | | | | |
|------------------------------|-----------|------------|--------------|-------------|-----------------|----------|------|-------|
| Reel Option | D | D1 | D2 | G | H | I | W1 | W2 |
| 7" Dia | Ø178.00 | 54.40 | 13.00 | R78.00 | R25.60 | R6.50 | 9.50 | 12.30 |
| REEL | Reel Size | Box | Box Size(mm) | Carton | Carton Size(mm) | G.W.(kg) | | |
| 3000 pcs | 7 inch | 45,000 pcs | 203×203×195 | 180,000 pcs | 438×438×220 | | | |

DISCLAIMER NOTICE

Rectron Inc reserves the right to make changes without notice to any product specification herein, to make corrections, modifications, enhancements or other changes. Rectron Inc or anyone on its behalf assumes no responsibility or liability for any errors or inaccuracies. Data sheet specifications and its information contained are intended to provide a product description only. "Typical" parameters which may be included on RECTRON data sheets and/ or specifications can and do vary in different applications and actual performance may vary over time. Rectron Inc does not assume any liability arising out of the application or use of any product or circuit.

Rectron products are not designed, intended or authorized for use in medical, life-saving implant or other applications intended for life-sustaining or other related applications where a failure or malfunction of component or circuitry may directly or indirectly cause injury or threaten a life without expressed written approval of Rectron Inc. Customers using or selling Rectron components for use in such applications do so at their own risk and shall agree to fully indemnify Rectron Inc and its subsidiaries harmless against all claims, damages and expenditures.