

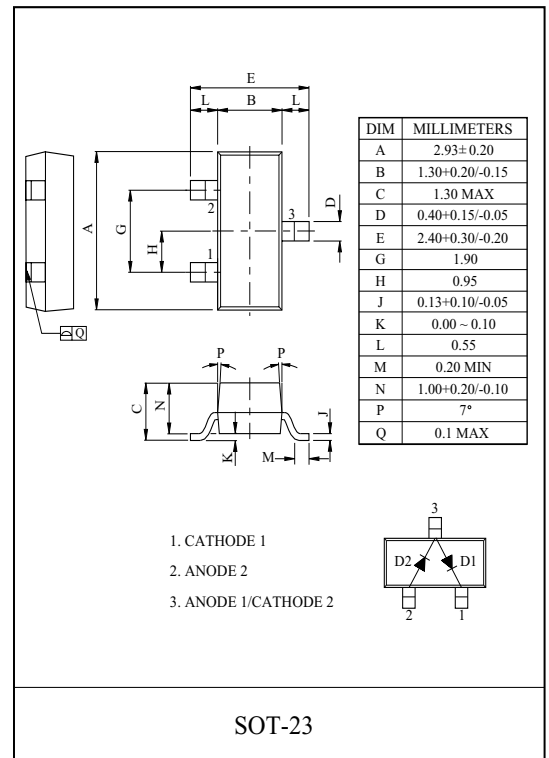
For high speed Switching.

#### FEATURES

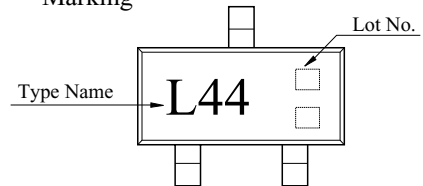
- Low Forward Voltage.
- Low Leakage Current.

#### MAXIMUM RATING (Ta=25 °C)

CHARACTERISTIC	SYMBOL	RATING	UNIT
Reverse Voltage	$V_R$	30	V
Average Forward Current	$I_O$	0.2	A
Non-repetitive Peak Forward Surge Current (t<1.0s)	$I_{FSM}$	0.6	A
Repetitive Peak Forward Current	$I_{FRM}$	0.3	A
Power Dissipation	$P_D$	0.2	W
Junction Temperature	$T_j$	125	
Storage Temperature	$T_{stg}$	-55 150	



#### Marking

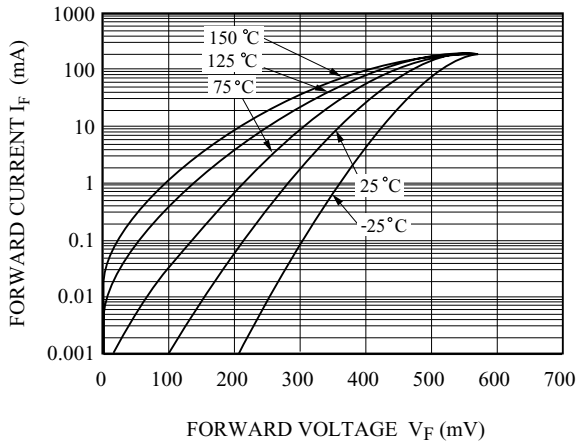


#### ELECTRICAL CHARACTERISTICS (Ta=25 °C)

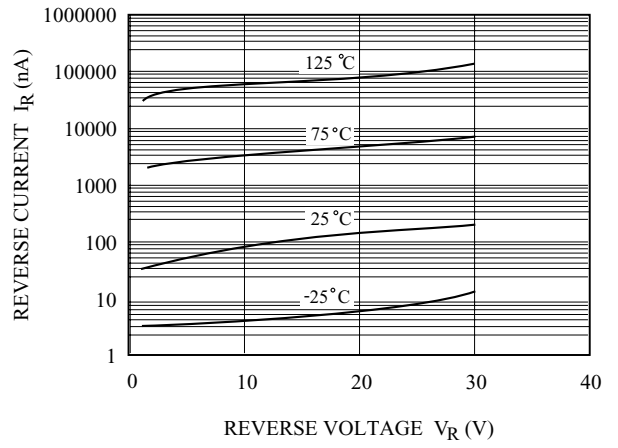
CHARACTERISTIC	SYMBOL	TEST CONDITION	MIN.	TYP.	MAX.	UNIT
Forward Voltage	$V_F$	$I_F=1.0mA$	-	-	0.32	V
		$I_F=10mA$	-	-	0.40	V
		$I_F=30mA$	-	-	0.50	V
		$I_F=100mA$	-	-	0.80	V
Reverse Current	$I_R$	$V_R=25V$	-	-	2	$\mu A$
Total Capacitance	$C_T$	$V_R=1V, f=1MHz$	-	-	10	pF
Reverse Recovery Time	$t_{rr}$	$I_R=I_F=10mA$	-	-	5	ns

# BAT54S

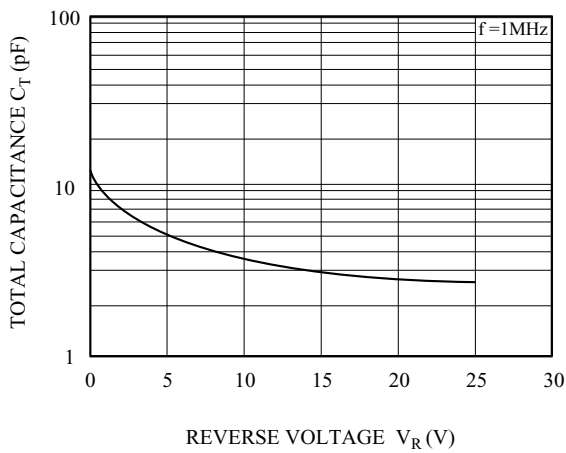
$I_F - V_F$



$I_R - V_R$



$C_T - V_R$



$P_c - T_a$

