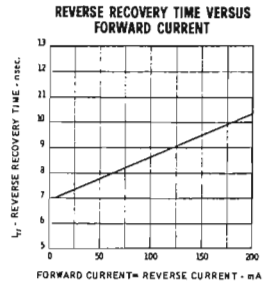
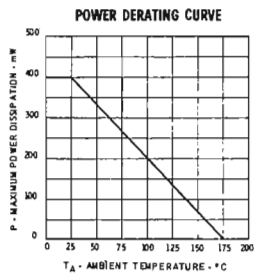
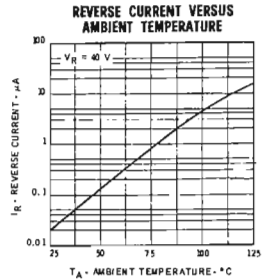
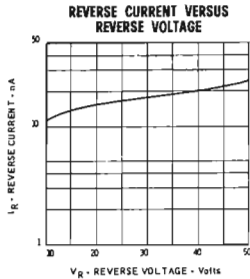
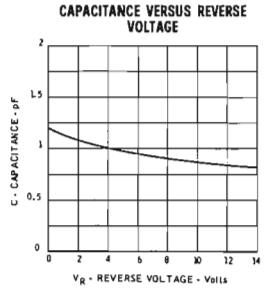
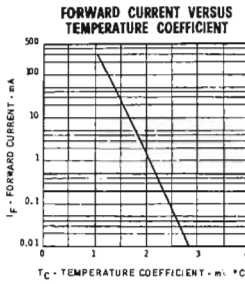
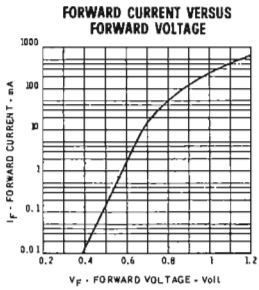


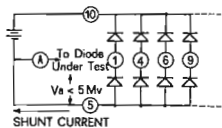


TYPICAL ELECTRICAL CHARACTERISTICS OF EACH DIODE  
(25°C free air temperature unless otherwise noted)

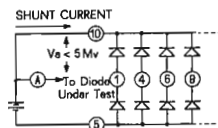


| TYPE NUMBER   |               | CIRCUIT CONFIGURATION | PACKAGE CONFIGURATION<br>(bottom view) |             |
|---------------|---------------|-----------------------|--|-------------|
| TO-5          | TO-18         |                       | TO-5                                   | TO-18       |
| <b>BAX 45</b> | <b>BAX 46</b> |                       |  | AS FOR TO-5 |
| <b>BAX 47</b> | <b>BAX 48</b> |                       |  | AS FOR TO-5 |
| <b>BAX 49</b> | NONE          |                       |  | NONE        |
| <b>BAX 50</b> | NONE          |                       |  | NONE        |
| <b>BAX 51</b> | NONE          |                       |  | NONE        |

FIGURE 1



TEST CONNECTIONS FOR  
COMMON-CATHODE DIODES



TEST CONNECTIONS FOR  
COMMON-ANODE DIODES