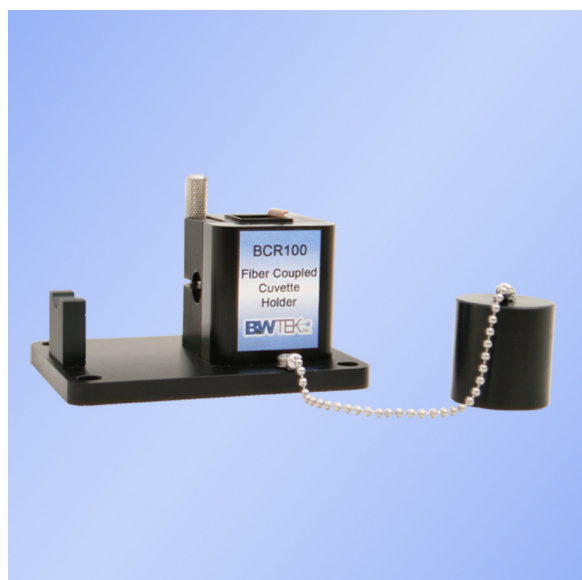


BCR100

Raman Cuvette Holder



BCR100 series cuvette holders are designed for raman sampling, and ease of sample handling. It holds a standard 12.5 x 12.5 mm cuvette for liquid or powder samples to be measured with connected raman systems. The cuvette sample holder provides a stop to prevent the probe shaft from hitting the cuvette and an excitation light trap to reduce background fluorescence.

The Standard Probe, BCR100 - 0.375 in, is designed for probe with 3/8" OD shaft diameter.

The Industrial Probe, BCR100 - 12 mm, is designed for probe with 12 mm OD shaft diameter.

Highlights

- Light trap to reduce background fluorescence
- Probe shaft stop and clamp
- High position repeatability

Specifications

Probe port diameter:	3/8 in or 12 mm
Cuvette size:	12.5 x 12.5 mm
Dimensions:	See attached drawings



MADATEC Srl
WWW.MADATEC.COM
Italy +39-0236542401

