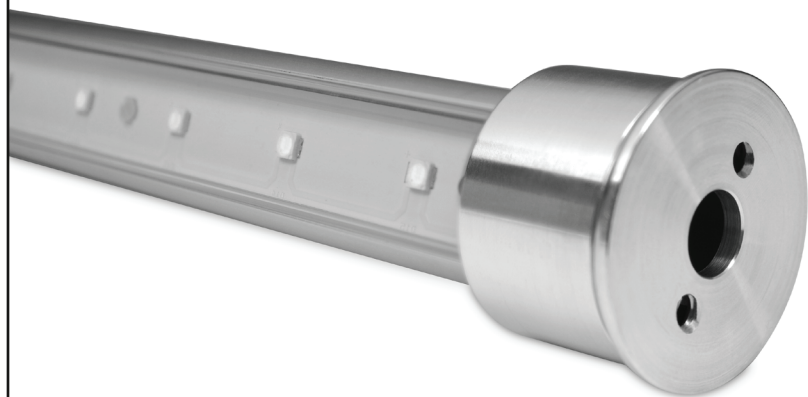


Type:

BCR100

Dedicated, remote driver LED fixture designed for closet rod applications



- Extruded aluminum housing available in anodized polished chrome, satin aluminum, polished brass, and antique bronze finish (consult factory for custom finishes)

- Available in sizes from 12" to 96"
- All fixtures made to specified length ± 1/16"
- Includes frosted or clear acrylic lens
- Fitting secures to surface with supplied mounting hardware and optional center support bracket which match body finish
- Center support bracket required for installations over 36"
- 33 lb. capacity up to 3' length
- LED CRI Typ 85
- 9 watts per linear foot
- Limited 3 year warranty

DRIVER:

- UL recognized class 2
- Constant current
- Life: 50,000 hrs
- Input voltage: 120-277V
- Output voltage: 55V max

- Remote aluminum enclosure 13" L x 2-11/16" W x 1-7/8" H

LENGTH

COLOR TEMPERATURE

LENS

FINISH

BCR100

+

—
please specify to the nearest 1/16" (from 12" to 96")

+

- 27: 2700K
- 30: 3000K
- 35: 3500K
- 40: 4000K
- 50: 5000K

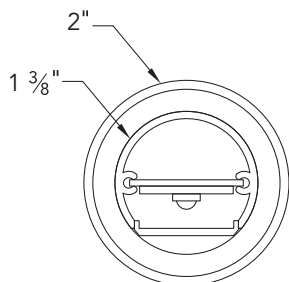
+

- C: clear
- F: frosted

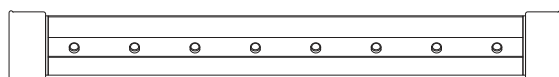
+

- CH: polished chrome
- SA: satin aluminum
- BR: polished brass
- AB: antique bronze
- CF: consult factory for custom color

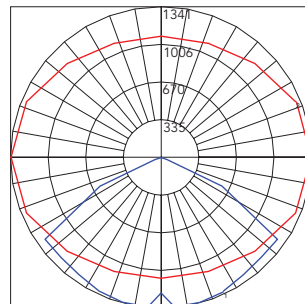
Profile



Plan



Photometric



Maximum Candela = 1340.9 Located At Horizontal Angle = 0, Vertical Angle = 5
1 - Vertical Plane Through Horizontal Angle = 0, Vertical Angle = 5
2 - Horizontal Cone Through Vertical Angle (5) (Through Max. Cd.)