



NPN BD241 – A – B – C

MEDIUM POWER LINEAR AND SWITCHING APPLICATIONS.

The BD241, A, B, C are the NPN transistors mounted in Jedec TO-220 plastic package. They are the silicon epitaxial-base Power Transistors for use in medium power linear and switching applications. The PNP complements are BD242, A, B, C. Compliance to RoHS.

ABSOLUTE MAXIMUM RATINGS

| Symbol | Ratings | | Value | Unit |
|-----------|---|---------------------------|-------------|------------|
| V_{CEO} | Collector-Emitter Voltage ($I_B = 0$) | BD241 | 45 | V |
| | | BD241A | 60 | |
| | | BD241B | 80 | |
| | | BD241C | 100 | |
| V_{CER} | Collector-Emitter Voltage ($R_{BE} = 100 \Omega$) | BD241 | 55 | V |
| | | BD241A | 70 | |
| | | BD241B | 90 | |
| | | BD241C | 115 | |
| V_{EBO} | Emitter-Base Voltage ($I_C = 0$) | BD241 | 5.0 | V |
| | | BD241A | | |
| | | BD241B | | |
| | | BD241C | | |
| I_C | Collector Current | I_C | 3 | A |
| | | I_{CM} | 5 | |
| I_B | Base Current | | 1 | A |
| P_T | Power Dissipation | @ $T_{amb} = 25^\circ C$ | 2 | W |
| | | @ $T_{case} = 25^\circ C$ | 40 | W |
| T_J | Junction Temperature | | 150 | $^\circ C$ |
| T_S | Storage Temperature | | -65 to +150 | |

THERMAL CHARACTERISTICS

| Symbol | Ratings | Value | Unit |
|----------------|--------------------------------------|-------|--------------|
| $R_{thJ-amb}$ | Thermal Resistance, Junction-ambient | 62.5 | $^\circ C/W$ |
| $R_{thJ-case}$ | Thermal Resistance, Junction-case | 3.13 | $^\circ C/W$ |

NPN BD241 – A – B – C

ELECTRICAL CHARACTERISTICS

TC=25°C unless otherwise noted

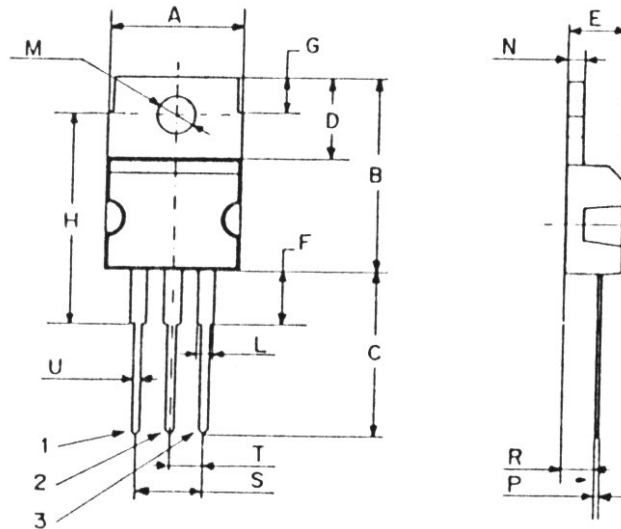
| Symbol | Ratings | Test Condition(s) | Min | Typ | Max | Unit | |
|----------------|---|--|--------|-----|-----|------|----|
| I_{CEO} | Collector Cutoff Current | $V_{CE}=30\text{ V}$ | BD241 | - | - | 0.3 | mA |
| | | $V_{CE}=30\text{ V}$ | BD241A | - | - | | |
| | | $V_{CE}=60\text{ V}$ | BD241B | - | - | | |
| | | $V_{CE}=60\text{ V}$ | BD241C | - | - | | |
| I_{EBO} | Emitter Cutoff Current | $V_{BE}=5\text{ V}$ | BD241 | - | - | 1.0 | mA |
| | | | BD241A | - | - | | |
| | | | BD241B | - | - | | |
| | | | BD241C | - | - | | |
| I_{CES} | Collector Cutoff Current ($V_{BE} = 0$) | $V_{CE}=55\text{ V}$ | BD241 | - | - | 0.2 | mA |
| | | $V_{CE}=70\text{ V}$ | BD241A | - | - | | |
| | | $V_{CE}=90\text{ V}$ | BD241B | - | - | | |
| | | $V_{CE}=115\text{ V}$ | BD241C | - | - | | |
| $V_{CEO(sus)}$ | Collector-Emitter Sustaining Voltage ($I_B = 0$) (*) | $I_C = 30\text{mA}$ | BD241 | 45 | | V | |
| | | | BD241A | 60 | | | |
| | | | BD241B | 80 | | | |
| | | | BD241C | 100 | | | |
| h_{FE} | DC Current Gain (*) | $V_{CE}=4\text{ V}, I_C=1\text{ A}$ | BD241 | 25 | - | - | - |
| | | | BD241A | | | | |
| | | | BD241B | | | | |
| | | | BD241C | | | | |
| | | $V_{CE}=4\text{ V}, I_C=3\text{ A}$ | BD241 | 10 | - | - | |
| | | | BD241A | | | | |
| | | | BD241B | | | | |
| | | | BD241C | | | | |
| $V_{CE(SAT)}$ | Collector-Emitter saturation Voltage (*) | $I_C=3\text{ A}, I_B=0.6\text{ A}$ | BD241 | - | - | 1.2 | V |
| | | | BD241A | | | | |
| | | | BD241B | | | | |
| | | | BD241C | | | | |
| $V_{BE(on)}$ | Base-Emitter Voltage (*) | $V_{CE}=4\text{ V}, I_C=3\text{ A}$ | BD241 | - | - | 1.8 | V |
| | | | BD241A | | | | |
| | | | BD241B | | | | |
| | | | BD241C | | | | |
| h_{fe} | Small Signal Current Gain | $V_{CE}=10\text{ V}$ $I_C=0.5\text{ A}$ $f = 1\text{ KHz}$ | BD241 | 20 | - | - | - |
| | | | BD241A | | | | |
| | | | BD241B | | | | |
| | | | BD241C | | | | |
| | | $V_{CE}=10\text{ V}$ $I_C=0.5\text{ A}$ $f = 1\text{ MHz}$ | BD241 | 3 | - | - | |
| | | | BD241A | | | | |
| | | | BD241B | | | | |
| | | | BD241C | | | | |

(*) Pulse Width $\approx 300\ \mu\text{s}$, Duty Cycle $\angle 2.0\%$

NPN BD241 – A – B – C

MECHANICAL DATA CASE TO-220

| DIMENSIONS (mm) | | |
|-----------------|-------|-------|
| | Min. | Max. |
| A | 9,90 | 10,30 |
| B | 15,65 | 15,90 |
| C | 13,20 | 13,40 |
| D | 6,45 | 6,65 |
| E | 4,30 | 4,50 |
| F | 2,70 | 3,15 |
| G | 2,60 | 3,00 |
| H | 15,75 | 17,15 |
| L | 1,15 | 1,40 |
| M | 3,50 | 3,70 |
| N | - | 1,37 |
| P | 0,46 | 0,55 |
| R | 2,50 | 2,70 |
| S | 4,98 | 5,08 |
| T | 2,49 | 2,54 |
| U | 0,70 | 0,90 |



| | |
|---------|-----------|
| Pin 1 : | Base |
| Pin 2 : | Collector |
| Pin 3 : | Emitter |
| Case : | Collector |

Revised September 2012

Information furnished is believed to be accurate and reliable. However, Comset Semiconductors assumes no responsibility for the consequences of use of such information nor for any infringement of patents or other rights of third parties which may result from its use. Data are subject to change without notice. Comset Semiconductors makes no warranty, representation or guarantee regarding the suitability of its products for any particular purpose, nor does Comset Semiconductors assume any liability arising out of the application or use of any product and specifically disclaims any and all liability, including without limitation consequential or incidental damages. Comset Semiconductors' products are not authorized for use as critical components in life support devices or systems.