



PNP BD242 – A – B – C

MEDIUM POWER LINEAR AND SWITCHING APPLICATIONS.

The BD242, A, B, C are the PNP transistors mounted in Jedec TO-220 plastic package. They are the silicon epitaxial-base Power Transistors for use in medium power linear and switching applications. The NPN complements are BD241, A, B, C. Compliance to RoHS.

ABSOLUTE MAXIMUM RATINGS

Symbol	Ratings		Value	Unit
V_{CEO}	Collector-Emitter Voltage ($I_B = 0$)	BD242	-45	V
		BD242A	-60	
		BD242B	-80	
		BD242C	-100	
V_{CER}	Collector-Emitter Voltage ($R_{BE} = 100 \Omega$)	BD242	-55	V
		BD242A	-70	
		BD242B	-90	
		BD242C	-115	
V_{EBO}	Emitter-Base Voltage ($I_C = 0$)	BD242	-5.0	V
		BD242A		
		BD242B		
		BD242C		
I_C	Collector Current	I_C	-3	A
		I_{CM}	-5	
I_B	Base Current		-1	A
P_T	Power Dissipation	@ $T_{amb} = 25^\circ C$	2	W
		@ $T_{case} = 25^\circ C$	40	W
T_J	Junction Temperature		150	°C
T_S	Storage Temperature		-65 to +150	

THERMAL CHARACTERISTICS

Symbol	Ratings	Value	Unit
$R_{thJ-amb}$	Thermal Resistance, Junction-ambient	62.5	°C/W
$R_{thJ-case}$	Thermal Resistance, Junction-case	3.13	°C/W

PNP BD242 – A – B – C

ELECTRICAL CHARACTERISTICS

TC=25°C unless otherwise noted

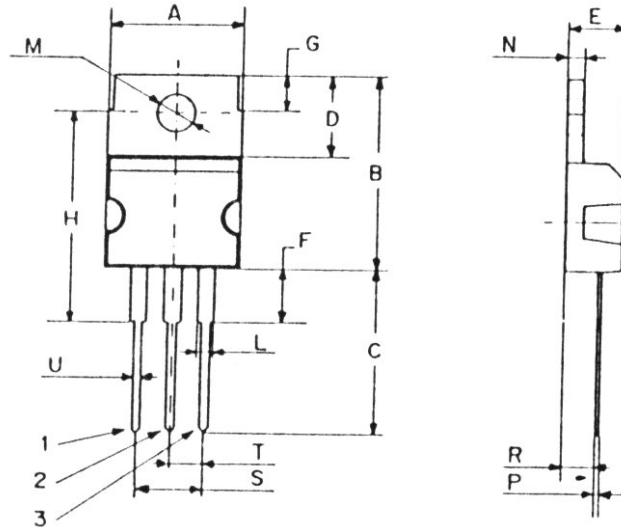
Symbol	Ratings	Test Condition(s)	Min	Typ	Max	Unit	
I_{CEO}	Collector Cutoff Current	$V_{CE}=-30\text{ V}$	BD242	-	-	-0.3	mA
		$V_{CE}=-30\text{ V}$	BD242A	-	-		
		$V_{CE}=-60\text{ V}$	BD242B	-	-		
		$V_{CE}=-60\text{ V}$	BD242C	-	-		
I_{EBO}	Emitter Cutoff Current	$V_{BE}=-5\text{ V}$	BD242	-	-	-1.0	mA
			BD242A	-	-		
			BD242B	-	-		
			BD242C	-	-		
I_{CES}	Collector Cutoff Current ($V_{BE} = 0$)	$V_{CE}=-55\text{ V}$	BD242	-	-	-0.2	mA
		$V_{CE}=-70\text{ V}$	BD242A	-	-		
		$V_{CE}=-90\text{ V}$	BD242B	-	-		
		$V_{CE}=-115\text{ V}$	BD242C	-	-		
$V_{CEO(sus)}$	Collector-Emitter Sustaining Voltage ($I_B = 0$) (*)	$I_C = -30\text{mA}$	BD242	-45		V	
			BD242A	-60			
			BD242B	-80			
			BD242C	-100			
h_{FE}	DC Current Gain (*)	$V_{CE}=-4\text{ V}$ $I_C=-1\text{ A}$	BD242	25	-	-	-
			BD242A				
			BD242B				
			BD242C				
		$V_{CE}=-4\text{ V}$ $I_C=-3\text{ A}$	BD242	10	-	-	
			BD242A				
			BD242B				
			BD242C				
$V_{CE(SAT)}$	Collector-Emitter saturation Voltage (*)	$I_C=-3\text{ A}$ $I_B=-0.6\text{ A}$	BD242	-	-	-1.2	V
			BD242A				
			BD242B				
			BD242C				
$V_{BE(on)}$	Base-Emitter Voltage (*)	$V_{CE}=-4\text{ V}$ $I_C=-3\text{ A}$	BD242	-	-	-1.8	V
			BD242A				
			BD242B				
			BD242C				
h_{fe}	Small Signal Current Gain	$V_{CE}=-10\text{ V}$ $I_C=-0.5\text{ A}$ $f = 1\text{KHz}$	BD242	20	-	-	-
			BD242A				
			BD242B				
			BD242C				
		$V_{CE}=-10\text{ V}$ $I_C=-0.5\text{ A}$ $f = 1\text{MHz}$	BD242	3	-	-	
			BD242A				
			BD242B				
			BD242C				

(*) Pulse Width $\approx 300\ \mu\text{s}$, Duty Cycle $\angle 2.0\%$

PNP BD242 – A – B – C

MECHANICAL DATA CASE TO-220

DIMENSIONS (mm)		
	Min.	Max.
A	9,90	10,30
B	15,65	15,90
C	13,20	13,40
D	6,45	6,65
E	4,30	4,50
F	2,70	3,15
G	2,60	3,00
H	15,75	17,15
L	1,15	1,40
M	3,50	3,70
N	-	1,37
P	0,46	0,55
R	2,50	2,70
S	4,98	5,08
T	2,49	2,54
U	0,70	0,90



Pin 1 :	Base
Pin 2 :	Collector
Pin 3 :	Emitter
Case :	Collector

Revised September 2012

Information furnished is believed to be accurate and reliable. However, Comset Semiconductors assumes no responsibility for the consequences of use of such information nor for any infringement of patents or other rights of third parties which may result from its use. Data are subject to change without notice. Comset Semiconductors makes no warranty, representation or guarantee regarding the suitability of its products for any particular purpose, nor does Comset Semiconductors assume any liability arising out of the application or use of any product and specifically disclaims any and all liability, including without limitation consequential or incidental damages. Comset Semiconductors' products are not authorized for use as critical components in life support devices or systems.