

BF 2520 Series

Multilayer Chip Band-Pass Filters

Features

- ❖ Ultra small SMD type with low loss at pass-band and high attenuation at stop-band.

Applications

- ❖ 2.4GHz WLAN, Home RF, Bluetooth Modules, etc.



Specifications

| Part Number | Freq. Range (MHz) | Insertion Loss @ BW (dB) | VSWR @ BW | Frequency | Attenuation (dB) |
|------------------------|-------------------|--------------------------|-----------|----------------|------------------|
| BF2520-E2R4CAE_ | 2400 ~ 2500 | 2.5 max. | 2.0 max. | 880 ~ 915MHz | 35 min. |
| | | | | 1710 ~ 1990MHz | 18 min. |
| | | | | 2100MHz | 12 min. |
| | | | | 3200MHz | 35 min. |
| | | | | 4800 ~ 5000MHz | 22 min. |
| | | | | 7200 ~ 7500MHz | 22 min. |

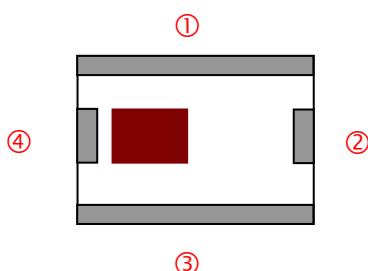
Q'ty/Reel (pcs) : 3,000
 Operating Temperature Range : -40 ~ +85 °C
 Storage Temperature Range : +5 ~ +35 °C, Humidity 45~75%RH
 Storage Period : 12 months max.
 Power Capacity : 500mW max.

Part Number

BF **2520** - **E** **2R4** **CAE** **□** **/LF**
 ① ② ③ ④ ⑤ ⑥ ⑦

| | | | |
|----------------------|-----------------------------------|------------------------|---------------------------|
| ① Type | BF : Band-Pass Filter | ② Dimensions (L x W) | 2.5 x 2.0 mm |
| ③ Material Code | E | ④ Frequency Range | 2R4=2400MHz |
| ⑤ Specification Code | CAE | ⑥ Packaging | T: Tape & Reel B: Bulk |
| ⑦ Soldering | =lead-containing /LF=lead-free | | |

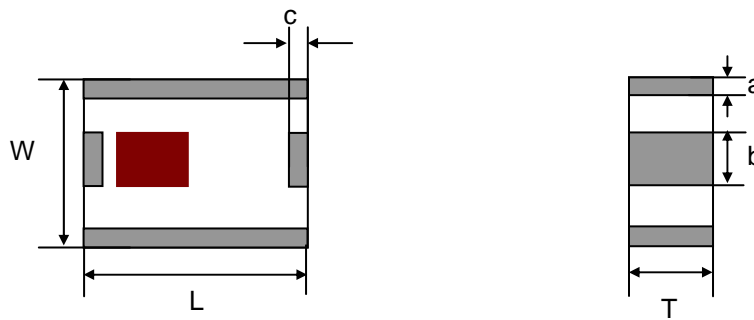
Terminal Configuration



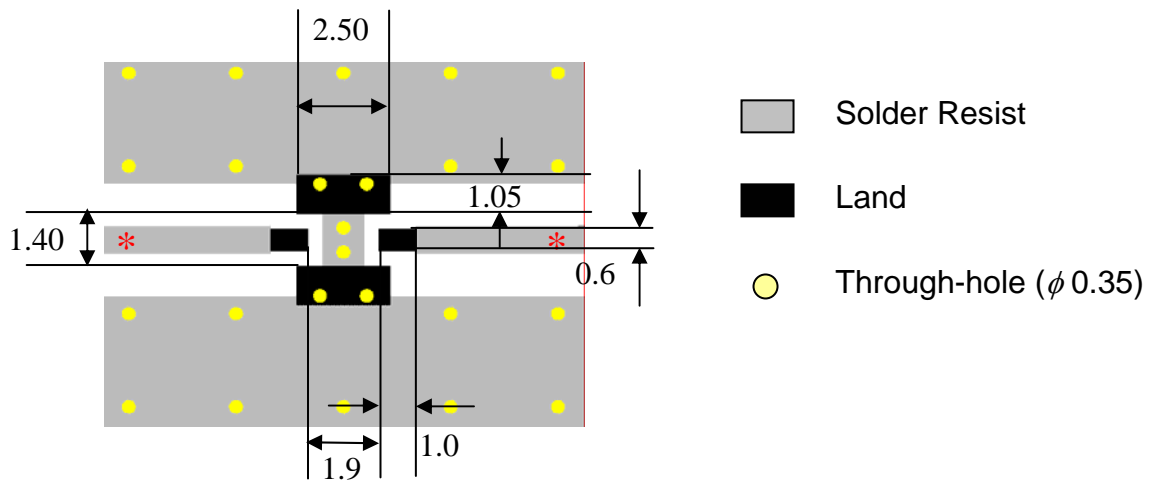
| No. | Terminal Name | No. | Terminal Name |
|-----|---------------|-----|---------------|
| ① | GND | ③ | GND |
| ② | OUT | ④ | IN |

Dimensions and Recommended PC Board Pattern

Unit : mm

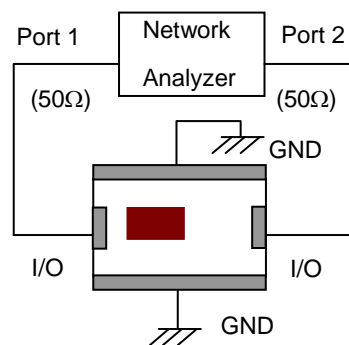


| Mark | L | W | T | a | b | c |
|------------|-----------|-----------|------------|-----------|-----------|-----------|
| Dimensions | 2.5 ± 0.2 | 2.0 ± 0.2 | 0.95 ± 0.1 | 0.3 ± 0.2 | 0.6 ± 0.2 | 0.3 ± 0.2 |

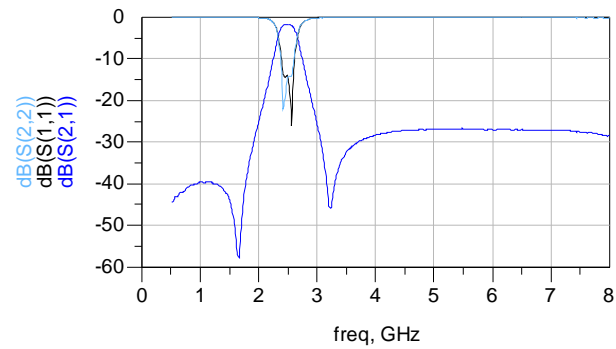


* Line width should be designed to match 50 Ω characteristic impedance, depending on PCB material and thickness.

Measuring Diagram



Electrical Characteristics (T=25°C)



Notes

- ❖ The contents of this data sheet are subject to change without notice. Please confirm the specifications and delivery conditions when placing your order.

Advanced Ceramic X Corp.

16 Tzu Chiang Road, Hsinchu Industrial District Hsinchu Hsien 303, Taiwan

TEL:886-3-5987008 FAX:886-3-5987001

E-mail: acx@acxc.com.tw <http://www.acxc.com.tw>