



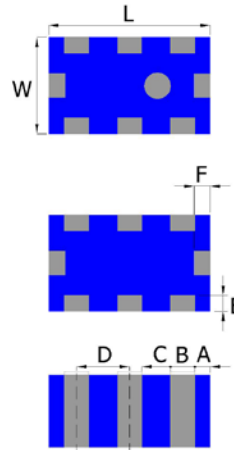
PRODUCT FEATURES

1. Surface mount balun filter with a small size of 2.0 X 1.2 X 0.9 mm, RoHS compliant.
2. Provide low insertion loss, high rejection rate at 3500MHz.
3. Highly stable under temperature and humidity changes.
4. Superior performance in a compact size, DC bias option provided.

RF CHARACTERISTICS

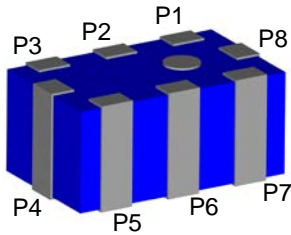
P/N BF5400E0805AT	Specification
Frequency range	4900MHz - 5875 MHz
Insertion Loss	2.0 dB max.
VSWR	2.0
Impedance (Unbalanced)	50 Ω
Impedance (Balanced)	100Ω
Phase Difference	180°± 15°
Amplitude Difference	2.0 dB max
Attenuation (min.)	30 dB @ 3500MHz
Operating temperature Range	-40°C to +85°C

PHYSICAL DIMENSIONS



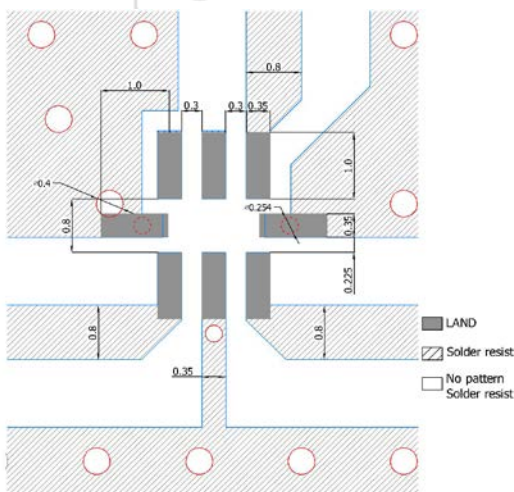
Symbol	Dimension (mm)
L	2.0 ± 0.15
W	1.25 ± 0.10
T	0.90 ± 0.10
A,E,F	0.20 ± 0.15
B,H	0.30 ± 0.10
C	0.35 ± 0.10
D	0.65 ± 0.10
G	0.475 ± 0.10

TERMINAL CONFIGURATION



PIN	Definition	PIN	Definition
P1	Unbalanced Port	P5	Balanced Port
P2	DC/GND	P6	GND
P3	NC	P7	Balanced Port
P4	GND	P8	GND

PCB DESIGN/LAYOUT CONSIDERATION



Note:

- Unit in mm
- Design trace width to be 50Ω impedance.



BF5400E0805AT BALUN FILTER SPECIFICATION

Rev. A

Typical Electrical Chart

