

Dell™ BH200 Bluetooth® 2.0 www.DataSheet4U.com

EDR Stereo Headset

Owner's Manual

Model BH200

www.DataSheet4U.com

www.dell.com | support.dell.com

Notes, Notices, and Cautions

www.DataSheet4U.com



NOTE: A NOTE indicates important information that helps you make better use of your computer.



NOTICE: A NOTICE indicates either potential damage to hardware or loss of data and tells you how to avoid the problem.



CAUTION: A CAUTION indicates a potential for property damage, personal injury, or death.

Information in this document is subject to change without notice.

© 2007 Dell Inc. All rights reserved.

Reproduction in any manner whatsoever without the written permission of Dell Inc. is strictly forbidden.

Trademarks used in this text: *Dell*, the *DELL* logo, are trademarks of Dell Inc.; *Microsoft* and *Windows* are registered trademarks of Microsoft Corporation.

Other trademarks and trade names may be used in this document to refer to either the entities claiming the marks and names or their products. Dell Inc. disclaims any proprietary interest in trademarks and trade names other than its own.

February 2007

P/N TX131

Rev. A01

www.DataSheet4U.com

Contents

www.DataSheet4U.com

	CAUTION: Safety Instructions	8
1	Introduction	
	Product Controls and Features	11
	LED Indicator Lights	12
	Audio Tones	13
2	Getting Started	
	Charging the Headset	14
	Switching the Headset On or Off	15
	Wearing the Headset	16

www.DataSheet4U.com

3 Using the Headset with Windows XP (Service Pack 2)

Dell BH200 Bluetooth Profiles	17
Pairing with your Computer	18
Using the Windows Bluetooth™ Setup Wizard	18
Using the Toshiba Bluetooth Application Software	24
Connecting with your Computer	35
Using the Windows Bluetooth™ Setup Wizard	35
Re-connecting	35
Listening to Music	36
Using your Headset to Chat	37
Using SKYPE (Ver 2.5)	38
Using Widcomm Bluetooth Application 5.0	38
Using Widcomm Bluetooth Application 5.1	40
Using the Toshiba Bluetooth Application	43
Using MSN (Windows Live Messenger 8.0)	45
Using Widcomm Bluetooth Application 5.0	45

Using Widcomm Bluetooth Application 5.1	46
Using the Toshiba Bluetooth Application	47

4 Using the Headset with Windows Vista

Dell BH200 Profiles	50
Pairing with your Computer	51
Connecting with your Computer	55
Using the Widcomm Bluetooth Application	55
Using the Toshiba Bluetooth Application	57
Re-connecting	60
Listening to Music	60
Using your Headset to Chat	61
Using SKYPE (Ver 2.5)	62
Using the Microsoft Bluetooth Device Application	62
Using MSN (Windows Live Messenger 8.0)	63
Using the Microsoft Bluetooth Device Application	63

5 Using Phone Mode

www.DataSheet4U.com

Pairing the Headset with a Mobile Phone	64
Reconnecting the Headset	65
Making a Call from the Mobile Phone	66
Voice Dialing through the Headset	66
Last Number Redial	67
Answering a Call.	67
Call Swap	67
Ending a Call	68
Rejecting a Call	68
Muting a Call.	68
Adjusting the Volume During a Call	69

6 Troubleshooting

Resetting the Headset.	78
---------------------------------------	-----------

A Appendix

www.DataSheet4U.com

Specifications	79
Certification and Safety Approvals/ General Information	80
Regulatory Statement (R&TTE)	82
Waste Electrical and Electronic Equipment (WEEE) Directive	85

CAUTION: Safety Instructions

www.DataSheet4U.com

- Risk of explosion if battery is replaced by an incorrect type. Dispose of used batteries according to the instructions
- Avoid storage at temperatures below -10°C or above 70°C .
- Avoid operating at temperatures below 0°C or above 50°C .
- Do not expose the headset or any of its supplied parts to rain or other liquids.
- Avoid storing or using at Relative Humidity levels below 10% or above 90%.
- Do not store or leave your headset near a heat source such as a radiator, fireplace, stove, electric heater, or other heat-generating appliance, or otherwise expose it to temperatures in excess of 70°C . When heated to excessive temperatures, the battery could explode or vent, posing a risk of fire.
- Do not use your headset while recharging.
- Do not use the headset while driving or cycling, or in any situation where you should be able to hear other sounds.
- To prevent possible hearing damage, do not listen at high volume levels for long periods.

www.DataSheet4U.com



NOTE: As a guide to setting the volume level, check that you can still hear your own voice when speaking normally, while listening with the headset.

Introduction

Congratulations on your purchase of the Dell BH200 Bluetooth 2.0 EDR Stereo Headset. This headset allows you to communicate wirelessly through your computer or mobile phone using its built-in microphone and stereo earphones.



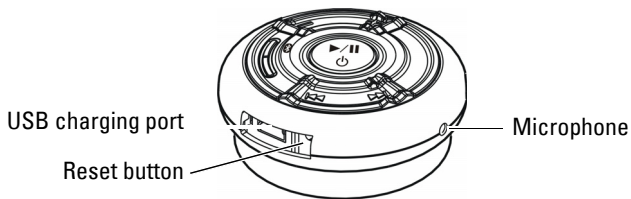
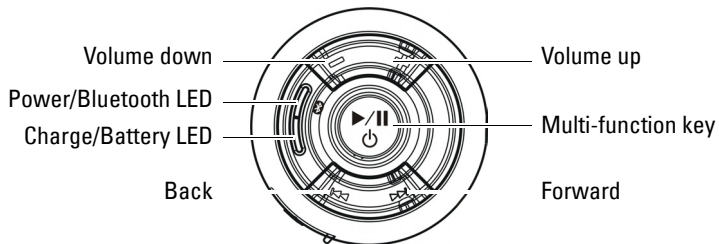
NOTE: Any devices that you use with the Dell BH200 must support the same Bluetooth profiles as the Dell BH200.



NOTE: Your Dell BH200 can be paired to two devices at the same time, as long as it uses different Bluetooth profiles for each one. For example, it can be connected to a computer using the Headset profile to listen to music and, at the same time, a mobile phone using the Hands-free profile to receive phonecalls.

Product Controls and Features

www.DataSheet4U.com



www.DataSheet4U.com

LED Indicator Lights

www.DataSheet4U.com

Mode	LED Indicator
Power On (Idle)	Power/Bluetooth LED solid on Blue
Power Off	Power/Bluetooth LED off
Pairing	Power/Bluetooth LED fast blinking Blue
Connected to Bluetooth Device	Power/Bluetooth LED slow blinking Blue
Charging On	Charge/Battery LED solid on Red
Fully Charged	Charge/Battery LED solid on Green
Battery Low	Charge/Battery LED slow blinking Red

www.DataSheet4U.com

Audio Tones

www.DataSheet4U.com

Headset Status	Audio Tones
Power On	"DO-LU" tone
Power Off	Beep
Mute Microphone	Beep every 2 seconds, from the receiver
Incoming call	Ringtone
Low battery	Beep every 20 seconds, from the receiver
Initiating voice dial	Depends on the setting of the cell phone
Connection / Disconnection success	"DO-LU" tone
Out of range	Two "DO-LU" tones
Volume at minimum or maximum level	Beep
End of call	Beep

www.DataSheet4U.com

Getting Started

Charging the Headset

Before using your headset, charge it using the USB cable.

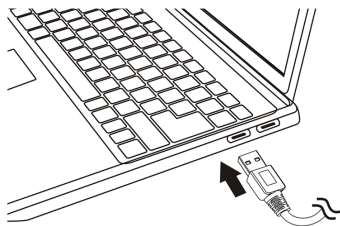


NOTE: USB cable is only used for headset charging. No data or audio is transferred.

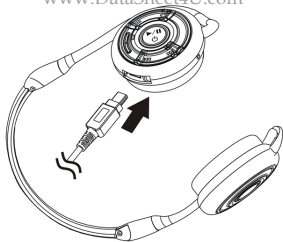


NOTE: Computer must be switched on to enable charging.

- 1 Plug the large end of the USB cable into a USB port on your computer.
- 2 Plug the small end of the USB cable into the USB charging port on your headset (see next image).



www.DataSheet4U.com



NOTE: Charge the headset for approximately 3 hours. The Power LED is red when charging and changes to green when charging is complete.

Switching the Headset On or Off

To switch on:

Press and hold the **Multi-function** key for 3 seconds until the Blue LED stays on ("DU"- "LO" tone will also sound).

To switch off:

Press and hold the **Multi-function** key for 3 seconds until the Blue LED goes off (single beep will also sound).

www.DataSheet4U.com

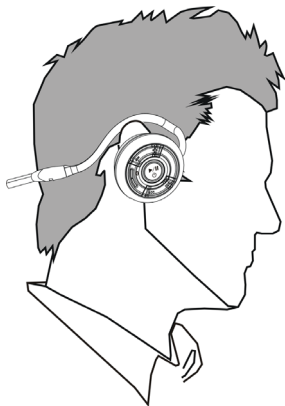


NOTE: The headset automatically switches off if no connection is established with another Bluetooth device within 10 minutes.

www.DataSheet4U.com

Wearing the Headset

The headset should be worn so that the headband is at the back of the neck, as shown below:



www.DataSheet4U.com

Using the Headset with Windows XP (Service Pack 2)

Dell BH200 Bluetooth Profiles

Your Dell BH200 can be used as stereo headphones (Headset profile) or as a hands-free device (Hands-free profile) with your computer.

- When used as stereo headphones, the audio quality is much higher, but the microphone is disabled. This is perfect for listening to music.

- When used as a hands-free device, the audio quality is lower, but the microphone is enabled. This is more suitable for use with IP phone software, or recording your voice.

Pairing with your Computer



NOTE: Make sure multimedia software is closed when establishing a Bluetooth connection.

Using the Windows Bluetooth™ Setup Wizard

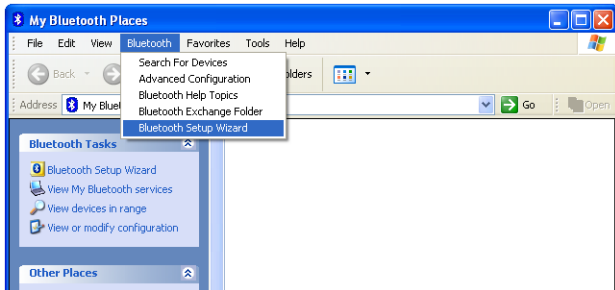
To set up your headset with your computer:

- 1 Click Start > All Programs > My Bluetooth Places



NOTE: Make sure Bluetooth function is enabled on computer.

- 2 In the window which appears, click **Bluetooth > Bluetooth Setup Wizard**.



- 3 The **Bluetooth Setup Wizard** appears. Before you continue, you need to make sure your headset is discoverable, as follows:
With your headset turned off, press and hold the **Multi-function key** for 6 seconds until the Blue LED flashes quickly, which indicates that the headset is in pairing mode.

- 4 Choose I want to find a specific Bluetooth device and configure how this computer will use its services, then click Next.



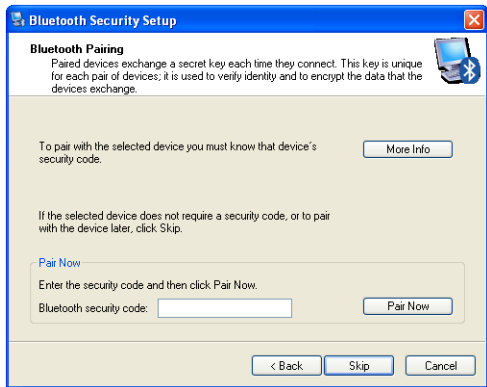
- 5 After the search has finished, click the **Dell BH200** icon, then click **Next**.

www.DataSheet4U.com



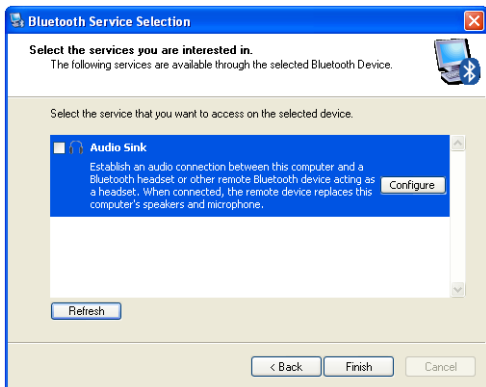
www.DataSheet4U.com

- 6 When asked for a **Bluetooth security code**, type **0000** (FOUR ZEROS), then click **Pair Now**.



- 7 Make sure **Audio Sink** is highlighted, then click **Finish**.

www.DataSheet4U.com



NOTE: By default, the Dell BH200 is installed as stereo headphones. If you prefer to install the Dell BH200 as a hands-free device, check the checkbox beside **Audio Sink**, and then click **Configure**. In the window which appears, check **Use connection for phone or dictation**, then click **OK**.

www.DataSheet4U.com

Using the Toshiba Bluetooth Application Software

www.DataSheet4U.com



NOTE: For optimum performance with Dell BH200, download the A01 or later patch from <http://support.dell.com> if you are using Dell TM350 bluetooth module

- 1 Click **Start > All Programs > Bluetooth > Bluetooth Settings**. The **Add New Connection Wizard** will begin (If it does not appear, click **New Connection**).
Before you continue, you need to make sure your headset is discoverable, as follows:

With your headset turned off, press and hold the **Multi-function key** for 6 seconds until the Blue LED flashes quickly, which indicates that the headset is in pairing mode.



NOTE: Choose **Custom Mode** if you want to install as a hands-free device. To install as stereo headphones (with no microphone), leave on **Express Install**.

www.DataSheet4U.com

2 Click Next.

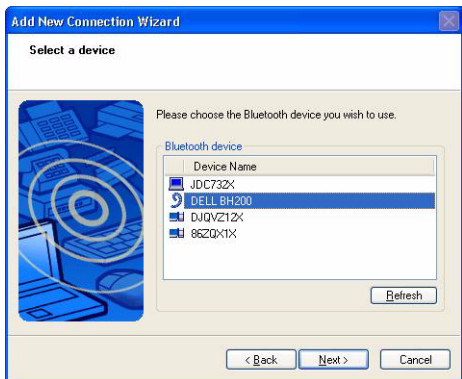
www.DataSheet4U.com



www.DataSheet4U.com

3 Highlight Dell BH200 and click Next.

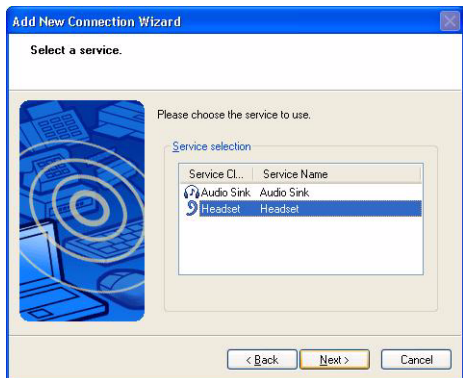
www.DataSheet4U.com



- 4 (Hands-free installation only) When asked for a **Bluetooth Passkey (PIN)**, type **0000 (FOUR ZEROS)**, then click **OK**.



- 5 (Hands-free installation only) Highlight **Headset**, then click **Next**.



- 6 (Hands-free installation only) When asked to press the headset button, press the **Multi-function key**.



- 7 (Hands-free installation only) Click **Next**.

www.DataSheet4U.com



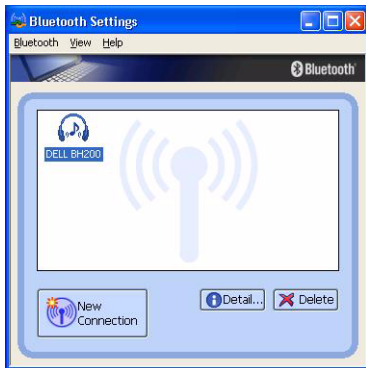
- 8 (Hands-free installation only) Click **Finish**.

www.DataSheet4U.com

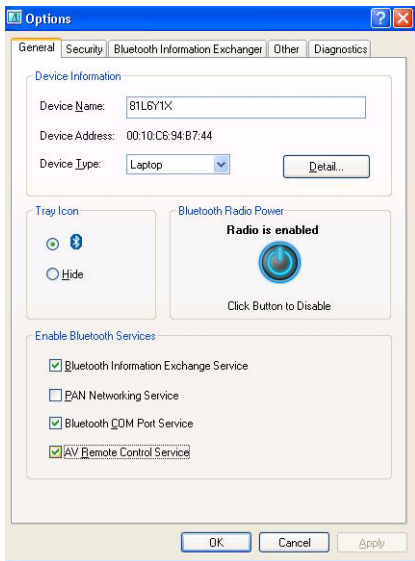
- 9 (Stereo Headset only) When asked for a Bluetooth Passkey (PIN), enter 0000 (four zeros), then click OK.



- 10 (Stereo Headset only) The Bluetooth Settings screen will appear again. Click **Bluetooth > Options**. www.DataSheet4U.com



- 11 (Stereo Headset only) Check the box beside **AV Remote Control Service**. www.DataSheet4U.com



12 (Stereo Headset only) Click **OK**.

13 Click **Bluetooth > Exit**.

www.DataSheet4U.com

www.DataSheet4U.com

Connecting with your Computer www.DataSheet4U.com

Using the Windows Bluetooth™ Setup Wizard

- 1 Double-click the **My Bluetooth Places** icon on your desktop.
- 2 Right-click on the **Dell BH200** icon and choose **Connect Stereo Headphones** or **Connect Hands-free Headset with Microphone**. For more information on the difference between these two modes, see "Dell BH200 Bluetooth Profiles" on page 17.



NOTE: If you do not see the Dell BH200 icon, click **Bluetooth > Search for Devices**.



NOTE: If you choose **Connect Hands-free Headset with Microphone**, you will hear a ringing tone. Press the **Multi-function key** once to accept the connection.

Re-connecting

When your headset is turned off and then on again, it is only necessary to press the **Multi-function key** once. This will re-establish the connection to either music or phone mode.

Listening to Music

www.DataSheet4U.com



NOTE: To listen to music through your Dell BH200, first make sure your device has been set up following the instructions in "Pairing with your Computer" on page 18.

Once your headset has been paired with your computer and is connected as **Stereo Headphones**, open the audio or multimedia software of your choice and play music or listen to video sound.

In Stereo Headphone mode, the following functions are available:

- **Multi-function key** – plays or pauses track
- **Forward** – Skips forward one track at a time. Hold to keep skipping forward through tracks.
- **Back** – Skips back one track at a time. Hold to keep skipping back through tracks.
- **Volume up** – increases volume
- **Volume down** – decreases volume



NOTE: These functions are dependent on your Bluetooth adapter supporting the AVRCP profile, and your multimedia application supporting multimedia controls. You may have to go into the

www.DataSheet4U.com

Bluetooth application settings to choose another multimedia application, e.g. the Toshiba Bluetooth application has a special tab just for this purpose.

Using your Headset to Chat



NOTE: To use your Dell BH200 with chat or VoIP software, first make sure your device has been set up following previous instructions, making sure to connect it as a Hands-free Headset with Microphone.

Once your Dell BH200 has been paired with your computer and connected as a **Hands-free Headset with Microphone**, open the chat or IP phone software of your choice. Calls must be made or received using the software itself, although the volume can be increased, decreased, or muted remotely using the headset.



NOTE: If your Dell BH200 is not automatically used as the default communication device, consult the chat or IP phone software's documentation for information on choosing audio devices.

Using SKYPE (Ver 2.5)

www.DataSheet4U.com

Using Widcomm Bluetooth Application 5.0

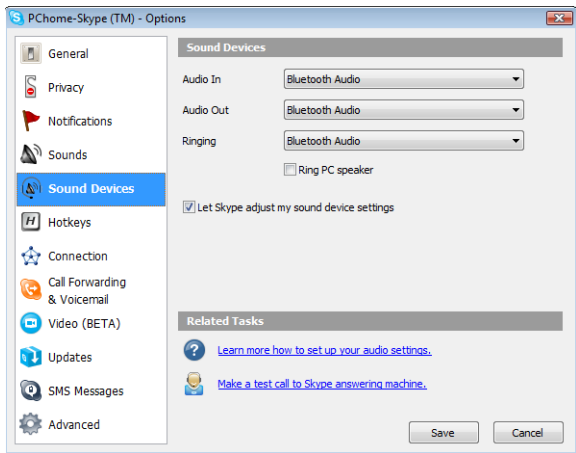



NOTE: To find out which Widcomm Bluetooth Application Software version is being used, open **My Bluetooth Places** and click **Help > About My Bluetooth Places**. A pop-up window will display the software version.

- 1 Make sure the headset is already paired with your computer.
- 2 In SKYPE, go to **Tools > Options > Sound Device**.

www.DataSheet4U.com

- 3 Set Audio In as Bluetooth Audio, Audio Out as Bluetooth Audio, and Ringing as Bluetooth Audio. www.DataSheet4U.com



- 4 Click Save.
- 5 In My Bluetooth Places, right-click  and select **Connect Hands-free Headset with Microphone**.

- 6 When a ring tone is heard from the headset, press the **Multi-function** key once to connect to the Headset service.



NOTE: When making/receiving a SKYPE call, connect the call on your computer.



NOTE: When ending a SKYPE call, hang up the call on your computer. Music is resumed automatically if you were listening to it previously.

- 7 To disconnect the Headset service, press the **Multi-function** key once.

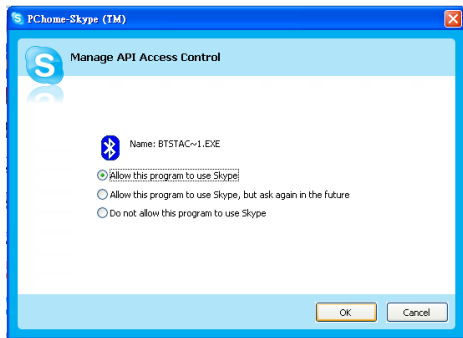
Using Widcomm Bluetooth Application 5.1




NOTE: To find out which Widcomm Bluetooth Application Software version is being used, open **My Bluetooth Places** and click **Help > About My Bluetooth Places**. A pop-up window will display the software version.

- 1 Make sure the headset is already paired with your computer.
- 2 In SKYPE, go to **Tools > Options > Privacy**, select **Manage other programs access to SKYPE**.
- 3 Select **Name: BTSTAC~1.EXE** and click **Change**.

- 4 Make sure the **Allow this program to use SKYPE** radio box is checked (see following image). www.DataSheet4U.com



- 5 In My Bluetooth Places, right-click  **DELL BH200** and select **Connect Hands-free**.



NOTE: To listen to music while waiting for a VoIP call, right-click



DELL BH200 in **My Bluetooth Places**, and select **Connect Stereo Headphones**.

- 6 When receiving a SKYPE call, press the **Multi-function key** once to accept the call. www.DataSheet4U.com



NOTE: Music will be paused automatically when making/receiving a SKYPE call.



NOTE: To end a SKYPE call, press the **Multi-function key** once. Music is resumed automatically if you were listening to it previously.


Using the Toshiba Bluetooth Application

www.DataSheet4U.com



NOTE: For optimum performance with Dell BH200, download the A01 or later patch from <http://support.dell.com> if you are using Dell TM350 bluetooth module

Connected Service: Hands-free Service

- 1 Make sure the headset is already paired with your computer.
- 2 In SKYPE, make sure **Tools > Options > Sound Device > Audio In, Audio Out and Ringing** are set as **Windows default device**.
- 3 In Toshiba Bluetooth Application, right-click  **DELL BH200_HF** and select **Connect**.



NOTE: When making/receiving a SKYPE call, connect the call on your computer.






NOTE: When ending a SKYPE call, hang up the call on your computer.

- 4 If disconnecting the HF service, right-click  **DELL BH200_HF** and select **Disconnect**.

www.DataSheet4U.com

Connected Service: Headset Service

www.DataSheet4U.com

- 1 Make sure the headset is already paired with your computer with the **Headset** service.
 - 2 In SKYPE, make sure **Tools > Options > Sound Device > Audio In, Audio Out and Ringing** are set as **Windows default device**.
 - 3 In Toshiba Bluetooth Application, right-click  **DELL BH200_HS** and select **Connect**.
 - 4 When a ring tone is heard from the headset, press the **Multi-function key** once to accept the Headset connection.
-  **NOTE:** When making/receiving a SKYPE call, connect the call on your computer.
-  **NOTE:** To end a SKYPE call, hang up the call on your computer.
- 5 To disconnect the Headset service, press the **Multi-function key** once.


www.DataSheet4U.com

Using MSN (Windows Live Messenger 8.0)

Using Widcomm Bluetooth Application 5.0



NOTE: To find out which Widcomm Bluetooth Application Software version is being used, open **My Bluetooth Places** and click **Help > About My Bluetooth Places**. A pop-up window will display the software version.

- 1 Make sure the headset is already paired with your computer.
- 2 In **My Bluetooth Places**, right-click  **DELL BH200** and select **Connect Hands-free Headset with Microphone**.
- 3 When a ring tone is heard from the headset, press the **Multi-function key** once to accept the Headset connection.
- 4 In Messenger, go to **Tools > Audio and Video Setting**.
- 5 In **Step1: Speaker setting**, select **Bluetooth Audio**.
- 6 In **Step2: Microphone setting**, select **Bluetooth Audio**.




NOTE: When making/receiving a Messenger call, connect the call on your computer.






NOTE: To end a Messenger call, hang up the call on your computer.

- 7 To disconnect the Headset service, press the **Multi-function** key once. www.DataSheet4U.com


Using Widcomm Bluetooth Application 5.1


 **NOTE:** To find out which Widcomm Bluetooth Application Software version is being used, open **My Bluetooth Places** and click **Help > About My Bluetooth Places**. A pop-up window will display the software version.


- 1 Make sure the headset is already paired with your computer.
- 2 In **My Bluetooth Places**, right-click  **DELL BH200** and select **Connect Hands-free**.

 **NOTE:** To listen to music while waiting for a VoIP call, right-click  **DELL BH200** in **My Bluetooth Places**, and select **Connect Audio Sink**.


- 3 In Messenger, go to **Tools > Audio and Video Settings**.
- 4 In **Step1: Speaker setting**, select **Bluetooth Audio**.
- 5 In **Step2: Microphone setting**, select **Bluetooth Audio**.

 **NOTE:** When making/receiving a Messenger call, connect the call on your computer.


 **NOTE:** Music will be paused automatically when making/receiving a Messenger call. www.DataSheet4U.com


 **NOTE:** To end a Messenger call, hang up the call on your computer. Music is resumed automatically if you were listening to it previously.


Using the Toshiba Bluetooth Application


 **NOTE:** For optimum performance with Dell BH200, download the A01 or later patch from <http://support.dell.com> if you are using Dell TM350 bluetooth module

Connected Service: Hands-free Service


- 1 Make sure the headset is already paired with your computer.
- 2 In Toshiba Bluetooth Application, right-click  **DELL BH200_HF** and select **Connect**.
- 3 In Messenger, go to **Tools > Audio and Video Settings**.
- 4 In **Step1: Speaker setting**, select **Bluetooth Wave** from **Toshiba**.
- 5 In **Step2: Microphone setting**, select **Bluetooth Wave** from **Toshiba**.

 **NOTE:** When making/receiving a Messenger call, accept the call on your computer. www.DataSheet4U.com

 **NOTE:** When ending a Messenger call, hang up the call on your computer.

- 6 To disconnect the HF service, right-click  **DELL BH200_HF** and select **Disconnect**.

Connected Service: Headset Service

- 1 Make sure the headset is already paired with your computer.
- 2 In Toshiba Bluetooth Application, right-click  **DELL BH200_HS** and select **Connect**.
- 3 When a ring tone is heard from the headset, press the **Multi-function key** once to accept the Headset connection.
- 4 In Messenger, go to **Tools > Audio and Video Settings**.
- 5 In **Step1: Speaker setting**, select **Bluetooth Wave** from Toshiba.
- 6 In **Step2: Microphone setting**, select **Bluetooth Wave** from Toshiba.



NOTE: When making/receiving a Messenger call, connect the call on your computer.

www.DataSheet4U.com



NOTE: To end a Messenger call, hang up the call on your computer.

- 7 To disconnect the Headset service, press the **Multi-function** key once.

Using the Headset with Windows Vista

Dell BH200 Profiles

Your Dell BH200 can be used as stereo headphones (Headset profile) or as a hands-free device (Hands-free profile) with your computer.


- When used as stereo headphones, the audio quality is much higher, but the microphone is disabled. This is perfect for listening to music.

- When used as a hands-free device, the audio quality is lower, but the microphone is enabled. This is more suitable for use with IP phone software, or recording your voice.

Pairing with your Computer



NOTE: Make sure Multimedia software is closed when establishing a Bluetooth connection.

- 1 Right-click on Bluetooth icon  (in taskbar), and choose **Add a Bluetooth Device**.
- 2 With your headset turned off, press and hold the **Multi-function key** for 6 seconds until the Power/Bluetooth Blue LED flashes quickly, which indicates that the headset is in pairing mode.

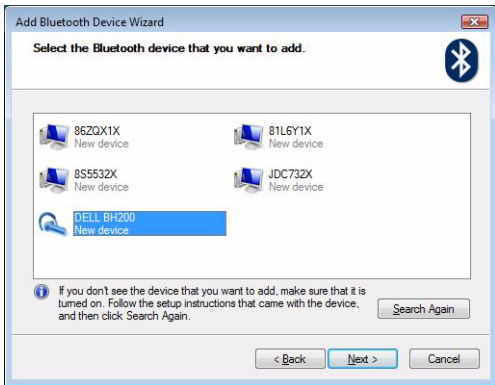
- 3 Choose My device is set up and ready to be found then click Next.

www.DataSheet4U.com



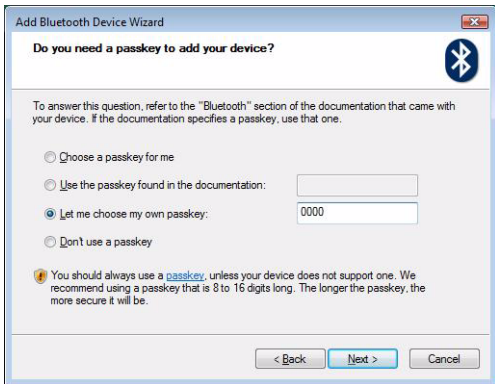
4 Highlight DELL BH200, then click **Next**.

www.DataSheet4U.com



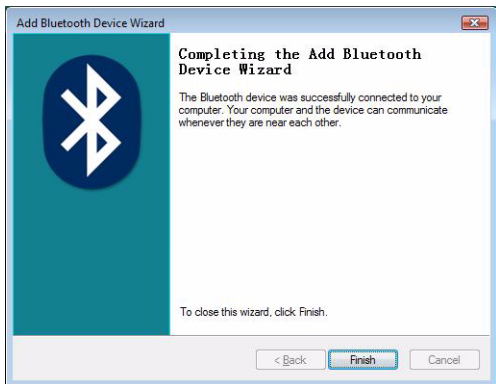
www.DataSheet4U.com

- 5 Check **Let me choose my own passkey**, enter **0000** (FOUR ZEROS), then click **Next**.



6 Click Finish.

www.DataSheet4U.com



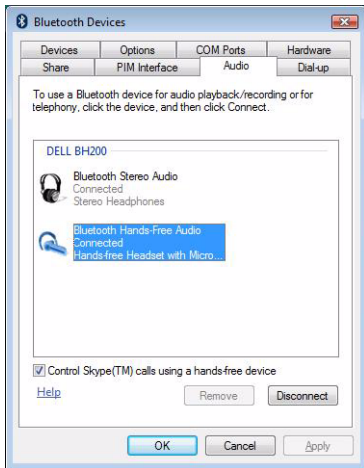
Connecting with your Computer

Using the Widcomm Bluetooth Application

- 1 Right-click on Bluetooth icon  (in taskbar), and choose Show Bluetooth Devices.

www.DataSheet4U.com

- 2 Under the **Audio** tab, highlight either **Bluetooth Stereo Audio** or **Bluetooth Hands-Free Audio**, then click **Connect** (to disconnect, click **Disconnect**).



- 3 Click **OK**.



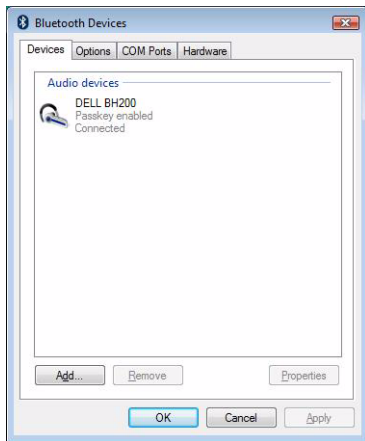
NOTE: Bluetooth Stereo Audio provides stereo audio, which is perfect for listening to music. **Bluetooth Hands-free Audio** provides mono audio, which is more suitable for use with VoIP software.

Using the Toshiba Bluetooth Application

- 1 Right-click on Bluetooth icon  (in taskbar), and choose Show Bluetooth Devices.

- 2 Under the **Devices** tab, highlight **DELL BH200**, then click **Properties**.

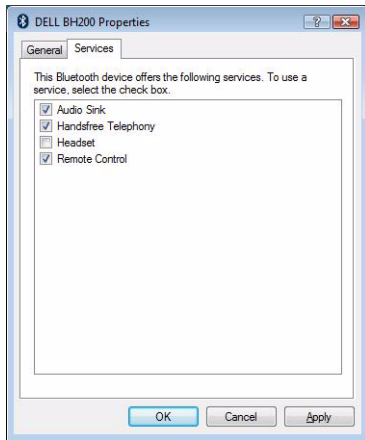
www.DataSheet4U.com



www.DataSheet4U.com

- 3 Under the Services tab, check the **Audio Sink** and **Remote Control** checkboxes, then click **OK**

www.DataSheet4U.com



- 4 Click **OK**.

Re-connecting

www.DataSheet4U.com

When your headset is turned off and then on again, it is only necessary to press the **Multi-function key** once. This will re-establish the connection to either music or phone mode.

Listening to Music



NOTE: To listen to music through your Dell BH200, first make sure your device has been set up following the instructions in "Pairing with your Computer" on page 51.

Once your headset has been paired with your computer and is connected as **Stereo Headphones**, open the audio or multimedia software of your choice and play music or listen to video sound.

In Stereo Headphone mode, the following functions are available:

- **Multi-function key** – plays or pauses track
- **Forward** – Skips forward one track at a time. Hold to keep skipping forward through tracks.
- **Back** – Skips back one track at a time. Hold to keep skipping back through tracks.
- **Volume up** – increases volume

www.DataSheet4U.com

- Volume down – decreases volume

www.DataSheet4U.com



NOTE: These functions are dependent on your Bluetooth adapter supporting the AVRCP profile, and your multimedia application supporting multimedia controls. You may have to go into the Bluetooth application settings to choose another multimedia application, e.g. the Toshiba Bluetooth application has a special tab just for this purpose.

Using your Headset to Chat



NOTE: To use your Dell BH200 with chat or VoIP software, first make sure your device has been set up following previous instructions, making sure to connect it as a Hands-free Headset with Microphone.

Once your Dell BH200 has been paired with your computer and connected as a **Hands-free Headset with Microphone**, open the chat or IP phone software of your choice. Calls must be made or received using the software itself, although the volume can be increased, decreased, or muted remotely using the headset.



NOTE: If your Dell BH200 is not automatically used as the default communication device, consult the chat or IP phone software's documentation for information on choosing audio devices.

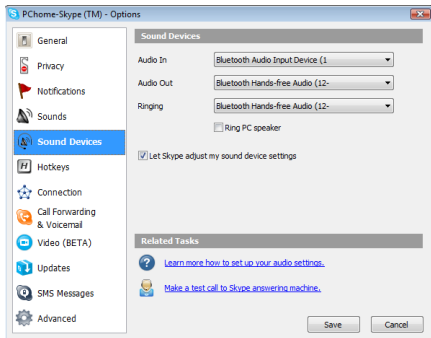
www.DataSheet4U.com

Using SKYPE (Ver 2.5)

www.DataSheet4U.com


Using the Microsoft Bluetooth Device Application


- 1 Make sure the headset is already paired with your computer.
- 2 In SKYPE, go to Tools > Options > Sound Device.
- 3 Set Audio In as Bluetooth Audio Input Device, Audio Out as Bluetooth Hands-free Audio and Ringing as Bluetooth Hands-free Audio (see following image).



- 4 Click Save.

www.DataSheet4U.com


 **NOTE:** When making/receiving a SKYPE call, connect the call on your computer. www.DataSheet4U.com


 **NOTE:** To end a SKYPE call, hang up the call on your computer. Music is resumed automatically if you were listening to it previously.

Using MSN (Windows Live Messenger 8.0)

Using the Microsoft Bluetooth Device Application

- 1 Make sure the headset is already paired with your computer.
- 2 In Messenger, go to **Tools > Audio and Video Setting**.
- 3 In **Step1: Speaker setting**, select **Bluetooth Hands-free Audio**.
- 4 In **Step2: Microphone setting**, select **Bluetooth Audio Input Device**.

 **NOTE:** When making/receiving a Messenger call, connect the call on your computer.

 **NOTE:** Music is resumed automatically if you were listening to it previously.

Using Phone Mode

Pairing the Headset with a Mobile Phone

Your Dell BH200 needs to be paired to your mobile phone before it can be used.



NOTE: Pairing procedures differ from one mobile phone to another. Refer to your phone's documentation for details on its particular method.

To pair your Dell BH200:

- 1 With your headset turned off, press and hold the **Multi-function key** for 6 seconds until the Blue LED flashes quickly, which indicates that the headset is in pairing mode.

- 2 Use your phone's menu to search for Bluetooth audio devices. The phone should indicate it has found the "Dell BH200" headset. Confirm that you want to pair your phone and headset together. If you are unsure how to go through the pairing process on your phone, please consult its user manual.
- 3 When asked for a pin key, enter: 0000 (four zeros). Your phone confirms when pairing has been successful.



NOTE: There is a time limit of 2 minutes to pair devices.

Reconnecting the Headset

When your headset is turned off and then on again, it is only necessary to press the **Multi-function key** once. This will re-establish the connection to either music or phone mode.

Making a Call from the Mobile Phone

www.DataSheet4U.com

While your mobile phone is paired with your headset, you can use the phone to make calls in the same way as normal. The only difference is that the earphone and microphone functions of the headset are used instead of the phone's.



NOTE: When connected in either Phone or Music mode, the Bluetooth LED blinks slowly.

Voice Dialing through the Headset

In order to use the voice dial feature of your headset, your phone must support voice dialing and must have voice tags stored.

To use voice dialing:

- 1 Switch the headset on and pair it with your phone, if this is not already the case.
- 2 When the headset is connected to phone mode only, click the **Forward** key once.
- 3 Follow the instructions for voice dialing on your particular mobile phone.

www.DataSheet4U.com

Last Number Redial

www.DataSheet4U.com

When the headset is connected to phone mode only, click the **Back** key once, and your phone will redial the last number that you called.



NOTE: This function only works on Bluetooth phones that support the Hands-free profile

Answering a Call

When someone calls you, a ring tone sounds in your headset. To answer the call, press the **Multi-function key**.



NOTE: You can set your mobile phone to automatically answer calls, meaning that you do not even need to press the **Multi-function key**. Please refer to your mobile phone's user guide for more information about this setting.

Call Swap

Some phone service providers support call swap. This means that if you receive a second call, you can put the first caller on hold while you speak to the second caller. If your phone supports this feature:

www.DataSheet4U.com

- 1 Press and hold the **Multi-function key** for 1 second, to put the first caller on hold and answer the second call
- 2 When the second call has ended, the first caller is automatically taken off hold.



NOTE: Press and hold the **Multi-function key** for 1 second if the first caller is not taken off hold automatically (depends on phone model).

Ending a Call

During a call, press the **Multi-function key** to hang up. If the other person hangs up first, then the call ends automatically.

Rejecting a Call

If you don't wish to accept a call, short press the **Forward key** to reject it.



NOTE: To use this function, your mobile phone must support the Hands-free profile.

Muting a Call

During a conversation, press the **Back key**. The microphone mutes. To cancel mute, press the **Back key** once again.

Adjusting the Volume During a Call

www.DataSheet4U.com

The headset offers 8 pre-set volume levels.

- To increase the volume, press the **Volume up key**
- To decrease the volume, press the **Volume down key**.

Troubleshooting

Why can't I hear any sound from my headset?

- Check the headset volume level.
- Make sure headset is paired.
- Make sure devices are not out of range. Try moving devices closer together and, if necessary, re-connecting.
- Make sure headset is switched on and sufficiently charged.
- Make sure Multimedia software is closed when establishing the Bluetooth connection.
- Make sure that **Bluetooth High Quality Audio** is chosen as the Mixer device, as follows:

For Windows XP only:

- 1 Double-click on the Volume icon in the Windows taskbar.
- 2 Click **Options > Properties**.
- 3 Make sure that **Bluetooth High Quality Audio** is chosen as the Mixer device, then click **OK**.

For Windows Vista only:

- 1 Right-click on the Volume icon in the Windows taskbar.
 - 2 Choose **Playback Devices**.
 - 3 Right-click on **Headset Earphone**.
 - 4 Choose **Set as Default Device**.
 - 5 Click **OK**.
- Make sure your computer volume is not muted, as follows:

For Windows XP:

- 1 Double-click on the Volume icon in the Windows taskbar.
- 2 Click **Options > Properties**.
- 3 Make sure that **Bluetooth High Quality Audio** is chosen as the Mixer device, then click **OK**.

- 4** Make sure that **Volume Control** is not muted, then click **Options > Exit**.

www.DataSheet4U.com

For Windows Vista:

- 1** Left-click on the Volume icon in the Windows taskbar.
 - 2** There is a button beneath the volume control for mute. If it has a red circle with a diagonal line through it, the volume is muted. Click on the button to remove the mute setting.
- The Bluetooth antenna is inside the right side of the headset. Covering the right side of the headset (e.g. with your hand or a hat or by laying down on that side) may result in no sound.
 - Your Bluetooth adapter does not have the required Bluetooth profiles (A2DP, Handset and Hands-free) in order to transmit sound. In Vista must install a driver to get the necessary Bluetooth profiles to listen to audio. Otherwise, Bluetooth will not be listed as a mixer device and Vista may prompt you to install “additional drivers” after you pair the BH200.

Microphone does not work

- Make sure that you are using the Hands-free profile, rather than the Headset profile.

www.DataSheet4U.com

- Check that the correct recording device is chosen in Windows. www.DataSheet4U.com

For Windows XP only:

- 1** Right-click on the Volume icon in the Windows taskbar.
- 2** Choose **Adjust Audio Properties**.
- 3** Click on the **Audio** tab
- 4** Change the **Sound playback Default device** to **Bluetooth Audio** and the **Sound recording Default device** to **Bluetooth Audio**.
- 5** Click **OK**.

For Windows Vista only:

- 1** Right-click on the Volume icon in the Windows taskbar.
- 2** Choose **Recording Devices**.
- 3** Right-click on **Headset Microphone**
- 4** Choose **Set as Default Device**.
- 5** Click **OK**.

Headset does not appear to be paired

Pairing might have been accidentally deleted.

Re-pair devices.

www.DataSheet4U.com

Only certain features appear to work with my computer or mobile phone


Some Bluetooth devices do not support all features, as they only support certain Bluetooth profiles. For example, a phone may support the headset profile, but not the hands-free profile. In this case, features such as Last Number Redial are not supported.

Stereo music works, but control buttons do not

Stereo music is transmitted using the A2DP profile. However, control buttons use the AVRCP (remote control) profile.

Make sure your other device supports the AVRCP profile, and if it does, try re-pairing and connecting to the **Bluetooth Stereo Audio** service.

For Windows Vista only:

- 1 Double-click the Bluetooth icon  in the Windows taskbar.
- 2 In the window which appears, select **Dell BH200** in the **Devices** tab and click **Properties**.
- 3 Select the **Services** tab and uncheck the **Remote Control** check box, then click **OK**.


www.DataSheet4U.com

4 Click **Properties** again.

www.DataSheet4U.com

5 Select the **Services** tab and check the **Remote Control** check box, then click **OK**.

For Windows XP (using Toshiba software) only:

1 Right-click on the Bluetooth icon  in the Windows taskbar.

2 Select **Option**.

3 Check the **AV Remote Control Service** checkbox.

4 Click **OK**.

Sound quality is poor

- Make sure you are connected to the **Bluetooth Stereo Audio** service. Connection to other Bluetooth audio service may not have optimum sound quality and performance. Refer to your computer or device documentation for further details.
- Choose **Bluetooth High Quality Audio** as the mixer device (See "Why can't I hear any sound from my headset?" on page 70 for more information on choosing this setting).
- Make sure that the latest Bluetooth drivers are installed on your computer.

www.DataSheet4U.com

- Close any unnecessary programs running on your computer.
- Switch headset off and on again to re-establish the connection.
- Devices with Bluetooth 1.1 and 1.2 modules may experience quality issues due to bandwidth restrictions.
- Using several Bluetooth devices on the same computer can saturate the available bandwidth, causing poor performance. Try using only one.
- Ensure the battery is fully charged.

Sound has interference

There is a chance of interference if objects are placed between your headset and your other Bluetooth device.

- Make sure that the path between the two devices is as clear as possible.
- Switch headset off and on again to re-establish the connection.
- The Bluetooth antenna is inside the right side of the headset. Covering the right side of the headset (e.g. with your hand or a hat or by laying down on that side) will disrupt the signal.

Headset is not behaving correctly, or buttons have stopped working

www.DataSheet4U.com

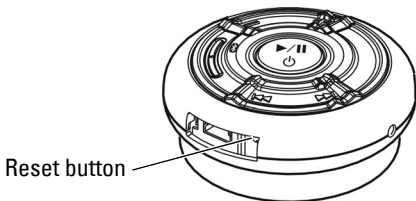
You may need to reset your headset.

Use a pin or similar object to press the reset button.

Resetting the Headset

www.DataSheet4U.com

If at any time the headset freezes, or fails to behave as it should, press the **Reset** button.



NOTE: After resetting the headset, switch on the power and connect your devices again.

www.DataSheet4U.com

Appendix

www.DataSheet4U.com

Specifications

Compatibility	Bluetooth Ver. 1.1, 1.2 or 2.0 devices
Maximum distance	30 Feet (10 meters)
Weight of headset	Approximately 70 grams
Typical standby time	Over 150 hours
Typical talk time	Up to 12 hours
Typical audio streaming time	Up to 10 hours
Typical re-charge time	3 hours
Battery type	Lithium Polymer 500 mAh rechargeable

www.DataSheet4U.com

Certification and Safety Approvals/ General Information

This product is CE, FCC, BQB marked. Please note that this product uses radio frequency bands not available for use within some areas of the EU. This product is intended to be used in Austria, Belgium, Denmark, Finland, France, Germany, Greece, Ireland, Italy, Luxembourg, The Netherlands, Portugal, Spain, Sweden, United Kingdom and within EFTA in Iceland, Norway and Switzerland.

Users are not permitted to make changes or modify the device in any way. Changes or modifications not expressly approved by your distributor will void the users' authority to operate the equipment.

Bluetooth is a registered trademark owned by Bluetooth SIG, Inc.

Important information on safe and efficient operation. Read this information before using your phone. Users are not permitted to make changes or modify the device in any way. Changes or modifications not expressly approved by the party responsible for compliance could void the user's authority to operate the equipment.



Is herewith confirmed to comply with the requirements set out in the Council Directive on the Approximation of the Laws of the Member States relating to Electromagnetic Compatibility (89/336/EEC), Low-voltage Directive (73/23/EEC) and the Amendment Directive (93/68/EEC), the procedures given in European Council Directive 99/5/EC and 89/3360EEC. The equipment was passed. The test was performed according to the following European standards:

- EN 300 328 V.1.6.1 (2003-04)
- EN 301 489-1 V.1.4.1 (2002-04) / EN 301 489-17 V.1.2.1 (2002-04)
- EN 301 893 V.1.2.3 (2003-08)
- EN 50371: 2002
- EN 60950: 2000

Regulatory Statement (R&TTE)

www.DataSheet4U.com

European standards dictate maximum radiated transmit power of 100mW EIRP and frequency range 2.400-2.4835GHz.

In France, the equipment must be restricted to the 2.4465-2.4835GHz frequency range and must be restricted to indoor use.

Operation of this device is subjected to the following National regulations and may be prohibited to use if certain restriction should be applied.

This device complies with Part 15 of the FCC Rules. Operation is subject to the following two conditions:

- 1** This device may not cause harmful interference.
- 2** This device must accept any interference received, including interference that may cause undesired operation.

www.DataSheet4U.com

15.105 Federal Communications Commission (FCC) Requirements, Part 15

www.DataSheet4U.com

This equipment has been tested and found to comply with the limits for a class B digital device, pursuant to part 15 of the FCC Rules. These limits are designed to provide reasonable protection against harmful interference in a residential installation. This equipment generates, uses and can radiate radio frequency energy and, if not installed and used in accordance with the instructions, may cause harmful interference to radio communications. However, there is no guarantee that interference will not occur in a particular installation. If this equipment does cause harmful interference to radio or television reception, which can be determined by turning the equipment off and on, the user is encouraged to try to correct the interference by one or more of the following measures: ---Reorient or relocate the receiving antenna. -- -Increase the separation between the equipment and receiver. --- Connect the equipment into an outlet on a circuit different from that to which the receiver is connected. ---Consult the dealer or an experienced radio/TV technician for help.

Any changes or modifications (including the antennas) made to this device that are not expressly approved by the manufacturer may void the user's authority to operate the equipment.

FCC RF Radiation Exposure Statement: This equipment complies with FCC RF radiation exposure limits set forth for an uncontrolled environment. This device and its antenna must not be co-located or operating in conjunction with any other antenna or transmitter.

Waste Electrical and Electronic Equipment (WEEE) Directive

www.DataSheet4U.com



In the European Union, this label indicates that this product should not be disposed of with household waste. It should be deposited at an appropriate facility to enable recovery and recycling. For information on how to recycle this product responsibly in your country, please visit: www.euro.dell.com/recycling.

Směrnice WEEE (Likvidace elektrických a elektronických produktů)

Tento štítek označuje v Evropské unii, že tento produkt nesmí být likvidován s domovním odpadem. Musí být předán specializované sbírně pro recyklaci a další využití. Informace o možnostech ekologické recyklace tohoto produktu ve vaší zemi najdete na webu: www.euro.dell.com/recycling.

www.DataSheet4U.com

Direktiv for bortskaffelse af elektrisk og elektronisk udstyr (WEEE)

www.DataSheet4U.com

I den Europæiske Union indikerer denne etiket, at dette produkt ikke bør kasseres sammen med husholdningsaffald. Det bør bortskaffes ved en egnet facilitet for at muliggøre genbrug. For information om hvordan dette produkt genbruges ansvarligt i dit land, bedes du gå til: www.euro.dell.com/recycling.

Richtlijn WEEE, Waste Electrical and Electronic Equipment (afdanken van elektrische en elektronische apparaten)

In de Europese Unie geeft dit label aan dit product niet via huishoudelijk afval mag worden afgedankt. Het moet gedeponoerd worden bij een daarvoor geschikte voorziening zodat recuperatie en recyclage mogelijk zijn. Raadpleeg voor informatie over de milieuvriendelijke wijze van recyclage van dit product in uw land: www.euro.dell.com/recycling.

Direktiiv elektri- ja elektroonikaseadmete jäätmete (WEEE) kohta

Euroopa Liidus osutab antud märgis sellele, et käesolevat toodet ei tohi kõrvaldada koos olmejäätmetega. See tuleks ladustada asjakohasesse hoidlasse, võimaldamaks taaskasutamist ja ringlussevõttu. Kui soovite lisateavet selle kohta, kuidas käesolevat toodet oma riigis vastutustundlikult ümber töödelda, külastage veebilehte: www.euro.dell.com/recycling.

www.DataSheet4U.com

Direktiivi sähkö- ja elektroniikkalaiteromusta (WEEE)

www.DataSheet4U.com

Euroopan unionissa tämä tarra tarkoittaa, että tuotetta ei tule hävittää kotitalousjätteen joukossa. Se tulee toimittaa asianmukaiseen paikkaan uudelleenkäyttöä tai kierrätystä varten. Lisätietoa siitä, miten tuotteen kierrätys on järjestetty kotimaassasi, saat osoitteesta: www.euro.dell.com/recycling.

Directive sur la mise au rebut des appareils électriques et électroniques (WEEE)

En Union européenne, cette étiquette indique que ce produit ne doit pas être jeté avec les déchets ménagers. Il doit être mis au rebut dans un centre de dépôt spécialisé pour un recyclage approprié. Pour obtenir davantage d'informations sur le recyclage approprié de ce produit dans votre pays, veuillez vous rendre sur le site : www.euro.dell.com/recycling.

Richtlinie für Abfall von elektrischen und elektronischen Geräten (WEEE)

In der Europäischen Union wird mit diesem Etikett darauf hingewiesen, dass dieses Produkt nicht mit dem Hausmüll entsorgt werden sollte. Es sollte an einer entsprechenden Einrichtung abgegeben werden, um Wiedergewinnung und Recycling zu ermöglichen. Weitere Informationen über das verantwortungsbewusste Recyceln dieses Produkts erhalten Sie unter: www.euro.dell.com/recycling.

Οδηγία σχετικά με τα απόβλητα ειδών ηλεκτρικού και ηλεκτρονικού εξοπλισμού (ΑΗΗΕ)

Στην Ευρωπαϊκή Ένωση, αυτή η ετικέτα υποδεικνύει ότι αυτό το προϊόν δεν πρέπει να απορρίπτεται μαζί με τα οικιακά απορρίμματα. Θα πρέπει να αποκομίζεται σε κατάλληλο χώρο ώστε να είναι δυνατή η ανάκτηση και η ανακύκλωση. Για πληροφορίες σχετικά με την υπεύθυνη ανακύκλωση αυτού του προϊόντος στη χώρα σας, επισκεφθείτε τη διεύθυνση: www.euro.dell.com/recycling.

Az elektromos és elektronikus hulladékokra vonatkozó irányelv (WEEE)

Az Európai Unióban az ilyen címkével jelölt terméket tilos háztartási hulladékként kezelni. Az ilyen hulladékot a helyreállíthatóság és az újrahasznosíthatóság érdekében a megfelelő elfogadóhelyre kell szállítani. Az ilyen termékeknek az Ön országára vonatkozó újrahasznosításával kapcsolatos információkért kérjük, látogasson el a következő webcímre: www.euro.dell.com/recycling.

Direttiva Rifiuti di apparecchiature elettriche ed elettroniche (RAEE)

www.DataSheet4U.com

Nell'Unione Europea, questa etichetta indica che questo prodotto non deve essere smaltito insieme ai rifiuti domestici. Deve essere depositato in un impianto adeguato che sia in grado di eseguire operazioni di recupero e riciclaggio. Per informazioni sulle procedure di riciclaggio responsabile di questo prodotto nel proprio Paese, visitare: www.euro.dell.com/recycling.

Direktīva par elektrisko un elektronisko iekārtu atkritumiem (EEIA)

Eiropas Savienībā šī uzlīme apzīmē to, ka šo produktu nedrīkst izmest kopā ar sadzīves atkritumiem. Ierīce jānodod atbilstošā punktā, lai to varētu pārstrādāt otrreizējai lietošanai. Lai iegūtu informāciju par šī produkta otrreizējo pārstrādi konkrēti Jūsu valstī, lūdzu, apmeklējiet: www.euro.dell.com/recycling.

Direktyva dėl elektros ir elektroninės įrangos atliekų (WEEE)

Šis ženklas rodo, kad Europos Sąjungoje šio gaminio negalima išmesti kartu su buitinėmis atliekomis. Nebenaudojamą gaminį reikia atiduoti į tam skirtą punktą atnaujinti arba perdirbti. Informacijos apie šio gaminio tinkamą perdirbimą jūsų šalyje žr. interneto svetainėje: www.euro.dell.com/recycling.

Direttiva dwar Skart magħmul minn Tagħmir Elettroniku u Elettriku (WEEE)

Fl-Unjoni Ewropea, din it-tikketta tindika li dan il-prodott m'għandux jintrema ma' l-iskart tad-dar. Dan għandu jintrema f'faċilità adattata biex l-irkuprar u r-riċiklaġġ ikunu possibbli. Għal tagħrif dwar kif tista' tirriċikla dan il-prodott b'responsabbiltà f'pajjizek, jekk joghġbok zur: www.euro.dell.com/recycling.

Directiva sobre equipamentos eléctricos e electrónicos a serem descartados (WEEE)

Na União Europeia, esta etiqueta indica que esse produto não deve ser eliminado juntamente com o lixo normal. Deve ser depositado numa instalação apropriada para recolha e reciclagem. Para obter informações sobre como reciclar este produto de forma responsável no seu país, visite: www.euro.dell.com/recycling.

Dyrektywa w sprawie zużytego sprzętu elektrycznego i elektronicznego (WEEE)

W Unii Europejskiej etykieta ta oznacza, że tego produktu nie należy wyrzucać wraz z odpadami z gospodarstwa domowego. Należy go przekazać do odpowiedniego zakładu, gdzie zostanie poddany odzyskowi i recyklingowi. Informacje o sposobie odpowiedzialnego recyklingu tego produktu w swoim kraju można znaleźć pod adresem: www.euro.dell.com/recycling.

Directiva sobre el deshecho de material eléctrico y electrónico (WEEE)

www.DataSheet4U.com

En la Unión Europea, esta etiqueta indica que la eliminación de este producto no se puede hacer junto con el deshecho doméstico. Se debe depositar en una instalación apropiada que facilite la recuperación y el reciclado. Para obtener más información sobre cómo reciclar este producto de manera responsable en su país, visite el sitio web: www.euro.dell.com/recycling.

Smernica o odpadových elektrických a elektronických zariadeniach (WEEE)

V Európskej únii tento štítok znamená, že sa výrobok nesmie likvidovať ako komunálny odpad. Musí sa odovzdať na príslušnom mieste na obnovu alebo recykláciu. Informácie o možnostiach recyklácie výrobku vo vašej krajine nájdete na adrese: www.euro.dell.com/recycling.

Direktiva o odlaganju električne in elektronske opreme (WEEE)

V Evropski uniji ta znak označuje, da izdelek ni primeren za odlaganje skupaj z običajnimi gospodinjstvenimi odpadki. Odložiti ga je treba na ustreznem mestu za odlaganje in reciklažo. Za informacije o recikliranju tega izdelka v vaši državi obiščite: www.euro.dell.com/recycling.

www.DataSheet4U.com

Direktiv för kassering av elektrisk och elektronisk utrustning (WEEE)

www.DataSheet4U.com

Inom EU betyder den här etiketten att produkten inte får slängas i hushållsavfallet. Den ska lämnas in på en återvinningsstation. Information om hur produkten återvinns i ditt land finns på adressen www.euro.dell.com/recycling.

Atık Elektrikli ve Elektronik Cihazlar (WEEE) Yönetmeliği

Avrupa Birliği'nde bu etiket, ürünün ev elektroniği aletleri atıkları ile imha edilemeyeceğini gösterir. Kurtarmak ve geri dönüşümünü sağlamak için uygun şartlarda saklanması gerekir. Bu ürünün geri dönüşüm sorumluluğu ile ilgili bilgi için, lütfen bu siteyi ziyaret edin: www.euro.dell.com/recycling.

www.DataSheet4U.com

