

Description

BP2608A is a high efficiency, high PF and low THD APFC controller. The device operates in critical conduction mode and is suitable for Boost topology.

BP2608A utilizes MOSFET source driving technique and zero current detecting method. The operating current of the IC is very low. With very few external components count, it can achieve excellent constant current performance, so the system cost and size are greatly reduced.

BP2608A offers rich protection functions to improve the system reliability, including load open protection, MOSFET over current limit.

BP2608A is available in SOP-8 package.



SOP-8 Package

Features

- Critical conduction mode operation
- Ultra low operating current
- High accuracy of reference voltage
- Load open protection
- MOS over current Limit
- VDD under voltage protection
- Available in SOP-8 package

Applications

- Boost APFC pre-converter

Typical Application

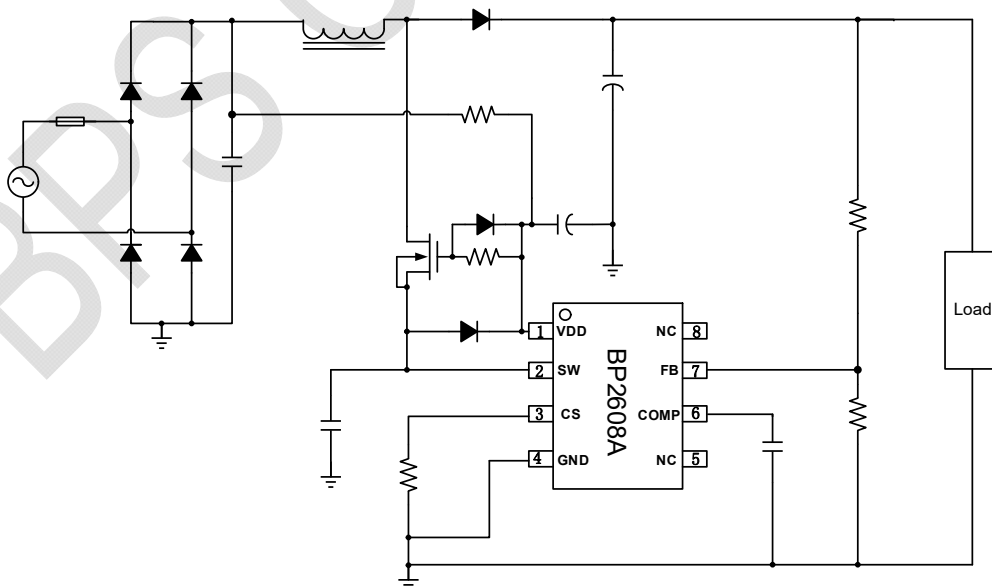


Figure 1 Typical application circuit for BP2608A Boost CV

Ordering Information

Part Number	Package	Package Method	Marking
BP2608A	SOP-8	Tape 4,000 pcs/Reel	BP2608A XXXXXYZ XYWWZ

Pin Configuration and Marking Information

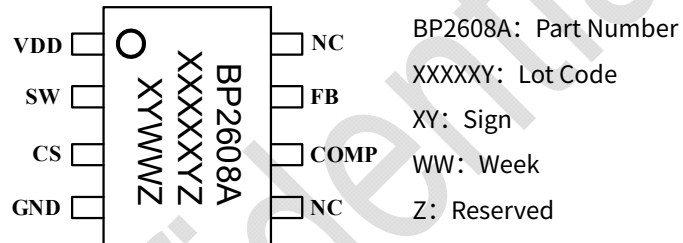


Figure 2 Pin Configuration

Pin Definition

Pin No.	Name	Description
1	VDD	IC Power Supply
2	SW	External HV Power MOSFET Source Driver
3	CS	MOSFET Current Sense
4	GND	IC Ground
5	NC	Not Connected
6	COMP	Loop Compensation Node
7	FB	Feedback and Output Sensing
8	NC	Not Connected

Disclaimer

The information provided in this datasheet is believed to be accurate and reliable. However, Bright Power Semiconductor (BPS) reserves the right to make changes at any time without prior notice.

No license, to any intellectual property right owned by BPS or any other third party, is granted under this document. BPS provides information in this datasheet “AS IS” and with all faults, and makes no warranty, express or implied, including but not limited to, the accuracy of the information provided in this datasheet, merchantability, fitness of a specific purpose, or non-infringement of intellectual property rights of BPS or any other third party. BPS disclaims any and all liabilities arising out of this datasheet or use of this datasheet, including without limitation consequential or incidental damages.

BPS Confidential