

INNOLUX DISPLAY CORPORATION

BT140GW01 V.2 LCD MODULE SPECIFICATION

- () Tentative Specification
- () Preliminary Specification
- (●) Final Specification

Customer	Checked & Approved by
Samsung	

Approved by	Checked by	Prepared by
MKT	PD	PM
		Monica Huang

Date: 2009/10/28

Innolux Display Corporation

No.160 Kesyue Rd., Chu-Nan Site, Hsinchu Science Park,

Chu-Nan 350, Miao-Li County, Taiwan

Tel: 886-37-586000

Fax: 886-37-586060

版權屬於群創所有，禁止任何未經授權的使用

The copyright belongs to INNOLUX. Any unauthorized use is prohibited.

Record of Revision

Version	Revise Date	Page	Content
0	2009/08/04	All	First Edition issued
1	2009/08/21	2	Add LED usage information: 48EA
			Add LED circuit block information
2	2009/09/24	3/12/13	Update LED Data
3	2009/09/28	4	Update General Block Diagram
		12	Update EN/PWM level
4	2009/10/28	17	Update Thermal Shock Criteria

Contents:	Page
1. General Specifications	2
2. Electrical Specifications	
2-1 Pin Assignment	3
2-2 Absolute Maximum Ratings	5
2-3 Electrical Characteristics	6
3. Optical Specifications	12
4. Reliability Test Items	16
5. Safety	17
6. Display Quality	17
7. Handling Precaution	17
8. Label Definition	18
9. Packing Form	20
10. Mechanical Drawings	21
Appendix	23

版權屬於群創所有，禁止任何未經授權的使用

1. General Specifications

NO.	Item	Specification	Unit
1	Display resolution (pixel)	1366(H) X 768(V), HD resolution	
2	Active area	309.40(H) X 173.95(V)	mm
3	Screen size	14.0 inches diagonal	Inches
4	Pixel pitch	0.2265(H) X 0.2265(V)	mm
5	Color configuration	Stripe	
6	Overall dimension	324(W) X 192.5(H) X 5.2(D) (max)	mm
7	Weight	350Max.	Grams
8	Surface treatment	Glare, 3H	
9	Input color signal	6 bit LVDS	
10	Display colors	262K (6 bit)	
11	Optimum viewing direction	6 o'clock	
12	Backlight	W-LED	
13	LED usage	48EA	
14	RoHS	RoHS compliance	

版權屬於群創所有，禁止任何未經授權的使用

2. Electrical Specifications

2-1 Pin Assignment

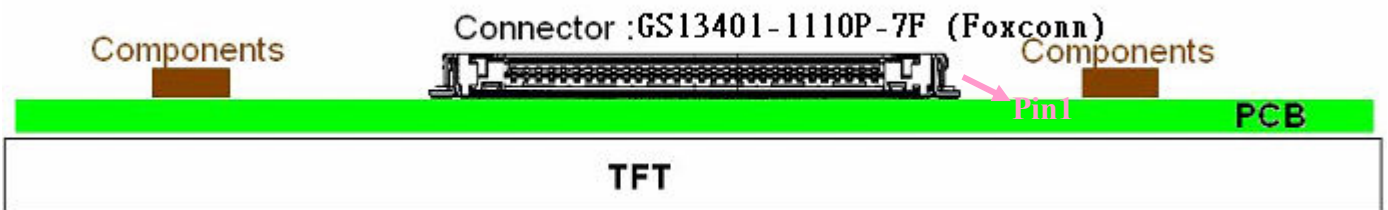
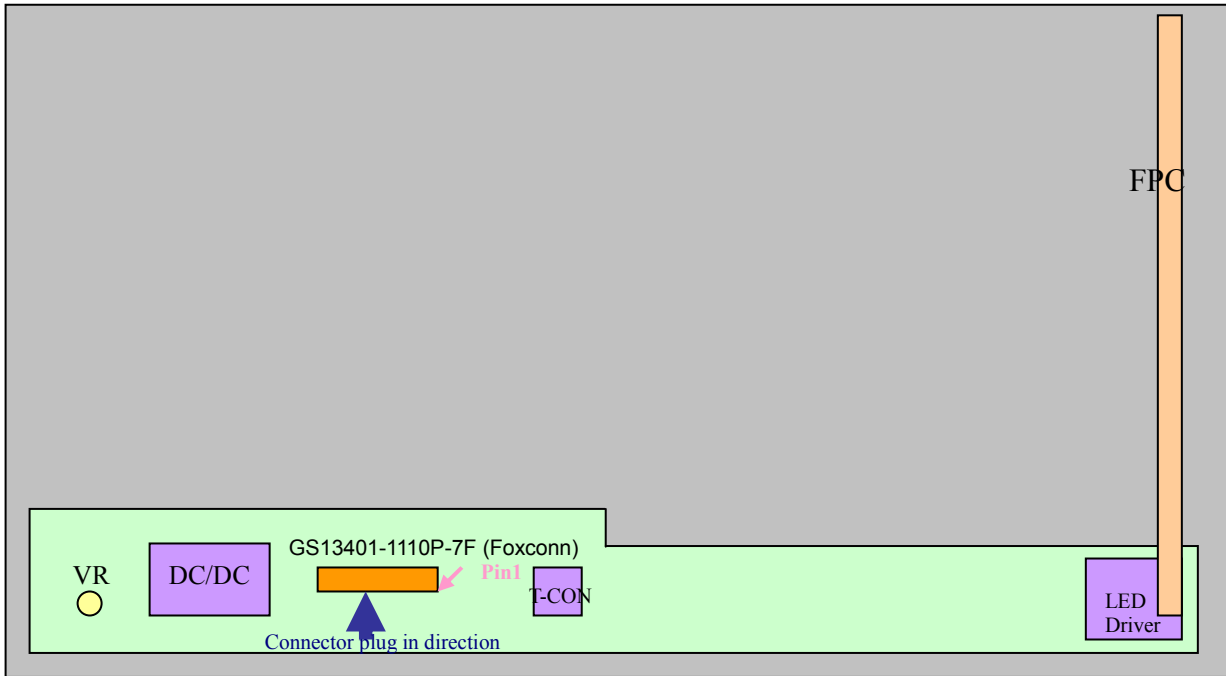
a. Panel connector

Connector Part No.: GS13401-1110P-7F (Foxconn) or equivalent

User's connector Part No: 20453-040T-12 (I-PEX) or equivalent

Pin No	Symbol	Description	Remark
1	NC	No connection (Reserve)	
2	V _{CC}	Power Supply (+3.3V)	
3	V _{CC}	Power Supply (+3.3V)	
4	V _{EDID}	DDC Power +3.3V	
5	NC	No connection (Reserve)	
6	CLK _{EDID}	DDC Clock	
7	DATA _{EDID}	DDC Data	
8	Rxin0-	Differential Data Input	R0~R5,G0
9	Rxin0+	Differential Data Input	
10	GND	Ground	
11	Rxin1-	Differential Data Input	G1~G5,B0,B1
12	Rxin1+	Differential Data Input	
13	GND	Ground	
14	Rxin2-	Differential Data Input	B2~B5,DE,Hsync,Vsync
15	Rxin2+	Differential Data Input	
16	GND	Ground	
17	CLK-	Differential Clock Input	
18	CLK+	Differential Clock Input	
19	NC	No connection (Reserve)	
20	NC	No connection (Reserve)	
21	NC	No connection (Reserve)	
22	NC	No connection (Reserve)	
23	NC	No connection (Reserve)	
24	NC	No connection (Reserve)	
25	NC	No connection (Reserve)	
26	NC	No connection (Reserve)	
27	NC	No connection (Reserve)	
28	NC	No connection (Reserve)	
29	NC	No connection (Reserve)	
30	NC	No connection (Reserve)	
31	LED_GND	LED Ground	
32	LED_GND	LED Ground	
33	LED_GND	LED Ground	
34	NC	No connection (Reserve)	
35	LED_PWM	PWM dimming signal input (3.3V)	
36	LED_EN	LED enable pin (3.3V)	
37	NC	No connection (Reserve)	
38	V_LED	LED power supply 7.5V~21V	
39	V_LED	LED power supply 7.5V~21V	
40	V_LED	LED power supply 7.5V~21V	

b. General Block Diagram



版權屬於群創所有，禁止任何未經授權的使用

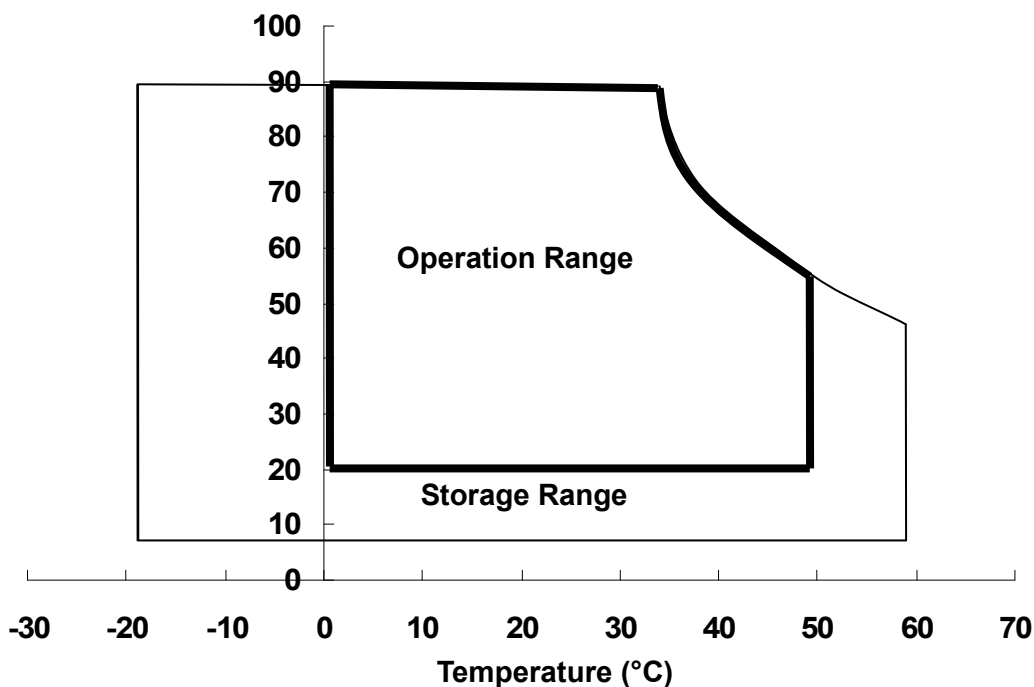
2-2. Absolute Maximum Ratings

Parameter	Symbol	Values		Unit	Remark
		Min.	Max.		
Power input voltage	V_{CC}	- 0.3	4.0	V	At 25°C
Signal input voltage	V_{IN}	- 0.3	4.0	V	At 25°C
Operating temperature	T_{OP}	0	50	°C	Note 1
Storage temperature	T_{ST}	- 20	60	°C	Note 2
Re-screw		-	5	Times	
Assured torque at side mount		-	2	kgf.cm	

Note 1: The relative humidity must not exceed 90%, non-condensing at temperatures of 40°C or less. At temperatures greater than 40°C, the wet bulb temperature must not exceed 39°C.

Note 2: The unit should not be exposed to corrosive chemicals.

Relative Humidity (%RH)



版權屬於群創所有，禁止任何未經授權的使用

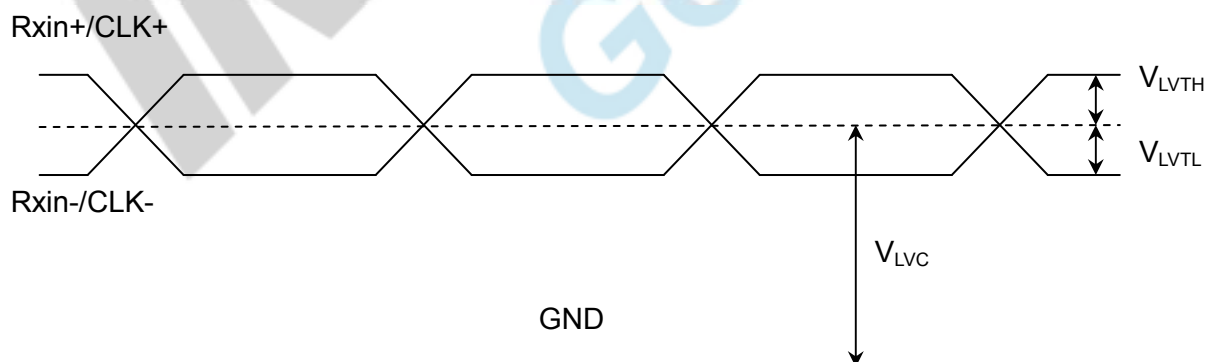
2-3. Electrical Characteristics

a. Typical operating conditions

Item	Symbol	Min.	Typ.	Max.	Unit	Remark	
Power input voltage	V_{CC}	3	3.3	3.6	V		
Permissive power input ripple	V_{RF}	-	-	0.1	V		
Power input current	I_{CC}	-	300	330	mA	Note 1	
Power consumption	P_C	-		1	Watts	Note 1	
LVDS interface	Differential input high threshold voltage	V_{LVTH}	-	+100	mV	LVDS interface	
	Differential input low threshold voltage	V_{LVTL}	-100	-	mV		
	Common input voltage	V_{LVC}	1.0	1.2	1.4	V	
	Terminating resistor	R_T	90	100	110	ohm	
Rush current	I_{Rush}	-	-	1.5	A	Note 3	
LED rush current	$I_{LED-Rush}$	-	-	3.0	A	Note 4	

Note 1: The specified input current and power consumption are under the $V_{CC} = 3.3\text{ V}$, 25°C , $f_V = 60\text{ Hz}$ (frame frequency) condition whereas black pattern is displayed.

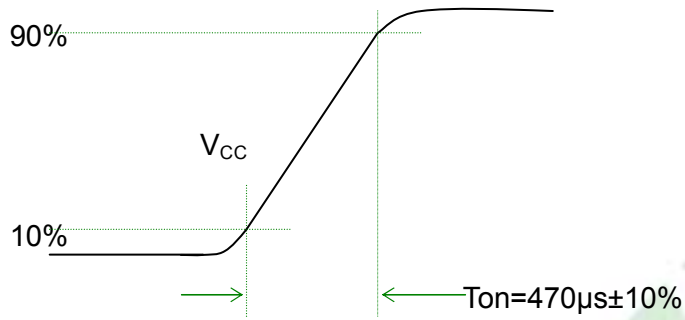
Note 2: LVDS waveform diagram



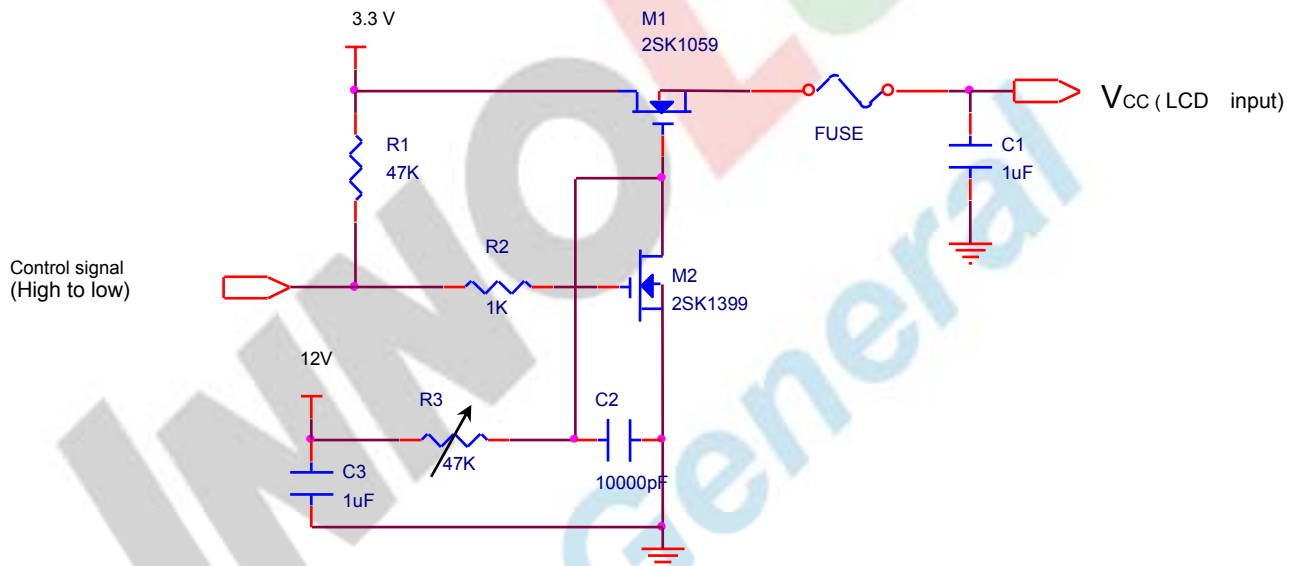
版權屬於群創所有，禁止任何未經授權的使用

Note 3: Test condition

- (1) Pattern: Black pattern
- (2) $V_{CC} = 3.3\text{ V}$, V_{CC} rising time = $470\ \mu\text{s} \pm 10\%$



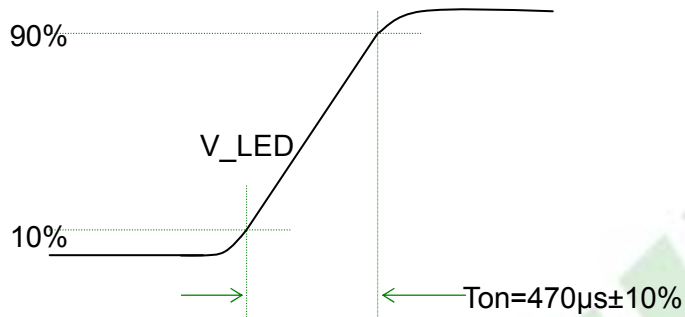
(3) Test circuit



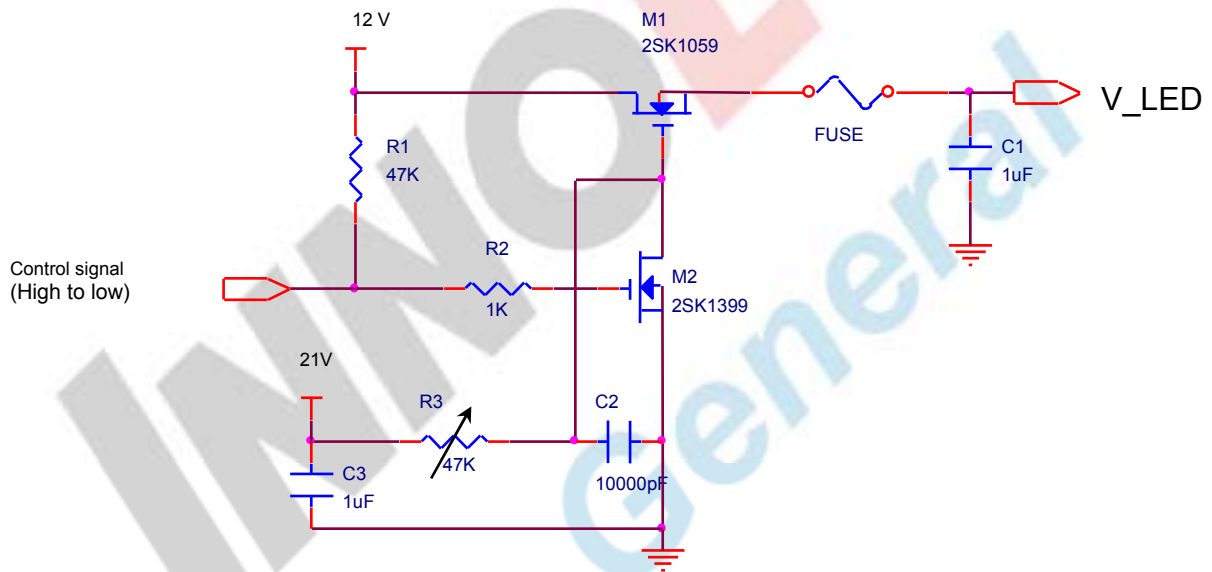
版權屬於群創所有，禁止任何未經授權的使用

Note 4: Test condition

- (1) Pattern: LED duty 100%
- (2) $V_{LED} = 12.0V$, V_{LED} rising time = $470 \mu s \pm 10\%$

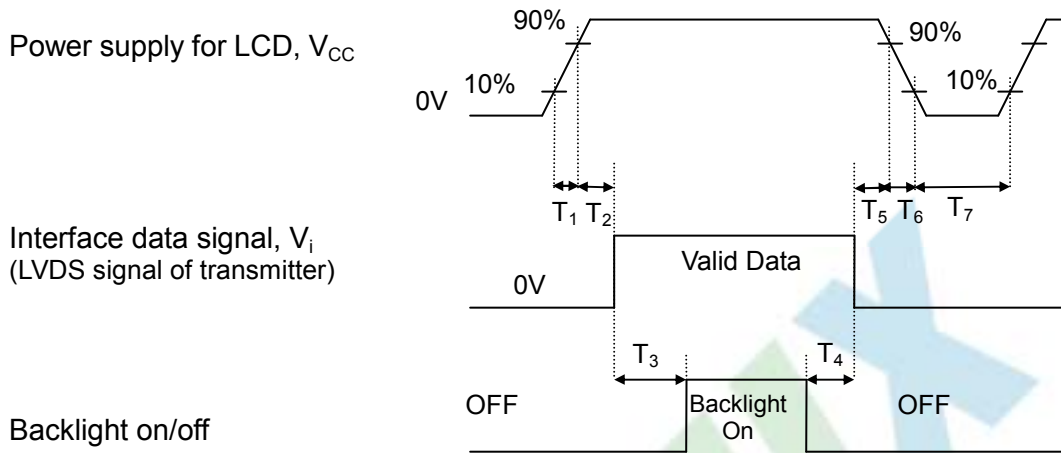


(3) Test circuit



版權屬於群創所有，禁止任何未經授權的使用

b. Power sequence



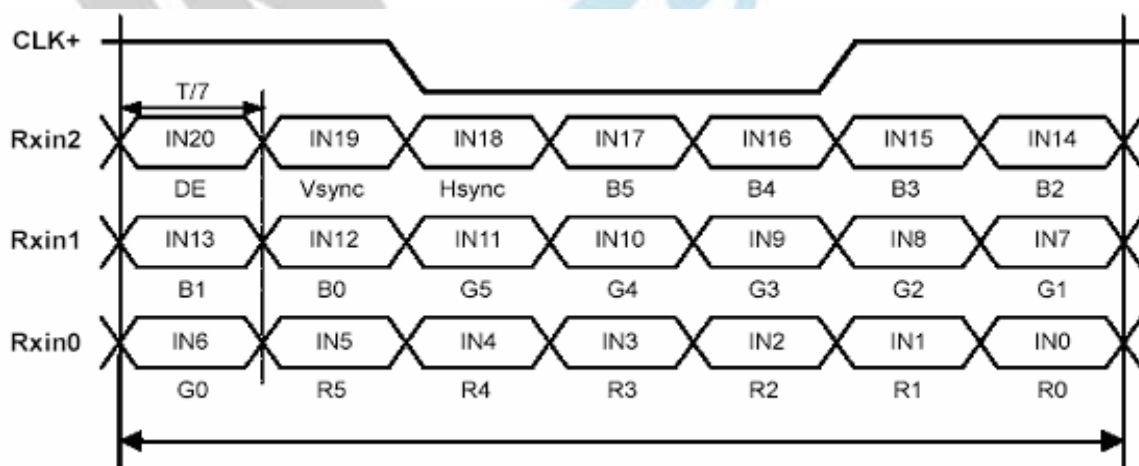
Power sequence timing table

Parameter	Value			Units
	Min.	Typ.	Max.	
T_1	0.5	-	10	ms
T_2	0	-	50	ms
T_3	200	-	-	ms
T_4	200	-	-	ms
T_5	0	-	50	ms
T_6	0	-	10	ms
T_7	400	-	-	ms

版權屬於群創所有，禁止任何未經授權的使用

c. Display color vs. input data signals

Signal Name	Description	Remark
R5	Red Data 5 (MSB)	Red-pixel data. Each red pixel's brightness data consists of these 6 bits pixel data.
R4	Red Data 4	
R3	Red Data 3	
R2	Red Data 2	
R1	Red Data 1	
R0	Red Data 0 (LSB)	
	Red-pixel Data	
G5	Green Data 5 (MSB)	Green-pixel data. Each green pixel's brightness data consists of these 6 bits pixel data.
G4	Green Data 4	
G3	Green Data 3	
G2	Green Data 2	
G1	Green Data 1	
G0	Green Data 0 (LSB)	
	Green-pixel Data	
B5	Blue Data 5 (MSB)	Blue-pixel data. Each blue pixel's brightness data consists of these 6 bits pixel data.
B4	Blue Data 4	
B3	Blue Data 3	
B2	Blue Data 2	
B1	Blue Data 1	
B0	Blue Data 0 (LSB)	
	Blue-pixel Data	



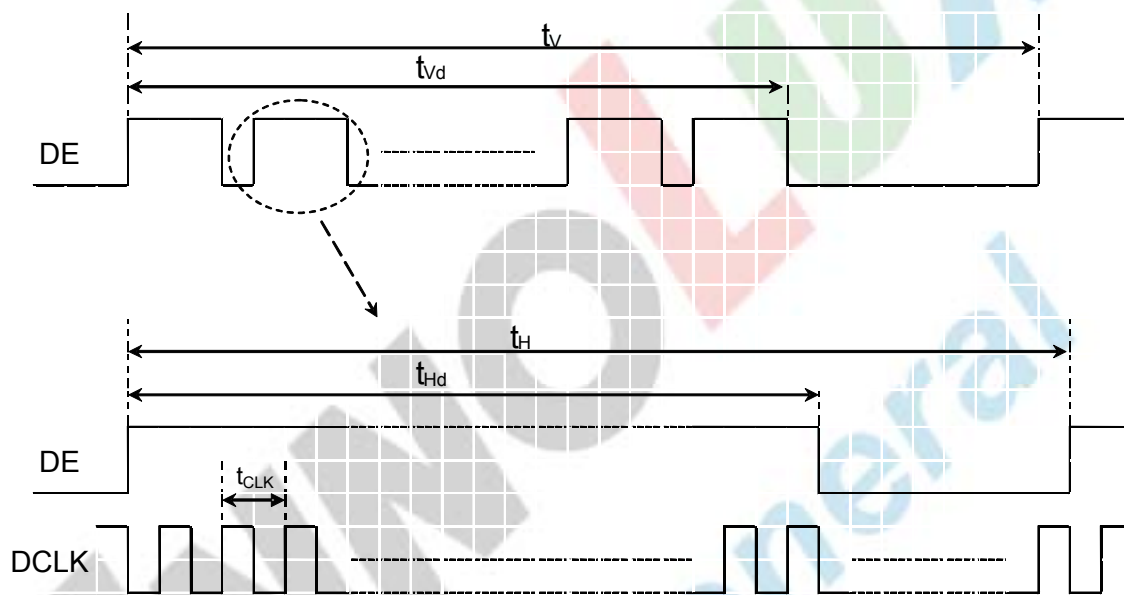
Signal for 1 DCLK cycle (t_{CLK})

版權屬於群創所有，禁止任何未經授權的使用

d. Input signal timing

Timing table

Description	Symbol	Min	Typ	Max	Unit
Frame rate	--	50	60	--	Hz
Clock freq.	$1/t_{CLK}$	65	75	85	MHz
Line cycle time	t_H	1400	1560	1800	t_{CLK}
Line width-active	t_{Hd}	1366	1366	1366	t_{CLK}
Frame cycle time	t_v	780	806	900	t_H
V width-active	t_{vd}	768	768	768	t_H



e. Display position

D(1, 1)	D(2, 1)	D(683, 1)	D(1365, 1)	D(1366, 1)
D(1, 2)	D(2, 2)	D(683, 2)	D(1365, 2)	D(1366, 2)
⋮		⋮	⋮	⋮
D(1, 384)	D(2, 384)	D(683, 384)	D(1365, 384)	D(1366, 384)
⋮		⋮	⋮	⋮
D(1, 767)	D(2, 767)	D(683, 767)	D(1365, 767)	D(1366, 767)
D(1, 768)	D(2, 768)	D(683, 768)	D(1365, 768)	D(1366, 768)

版權屬於群創所有，禁止任何未經授權的使用

f. Backlight driving conditions:

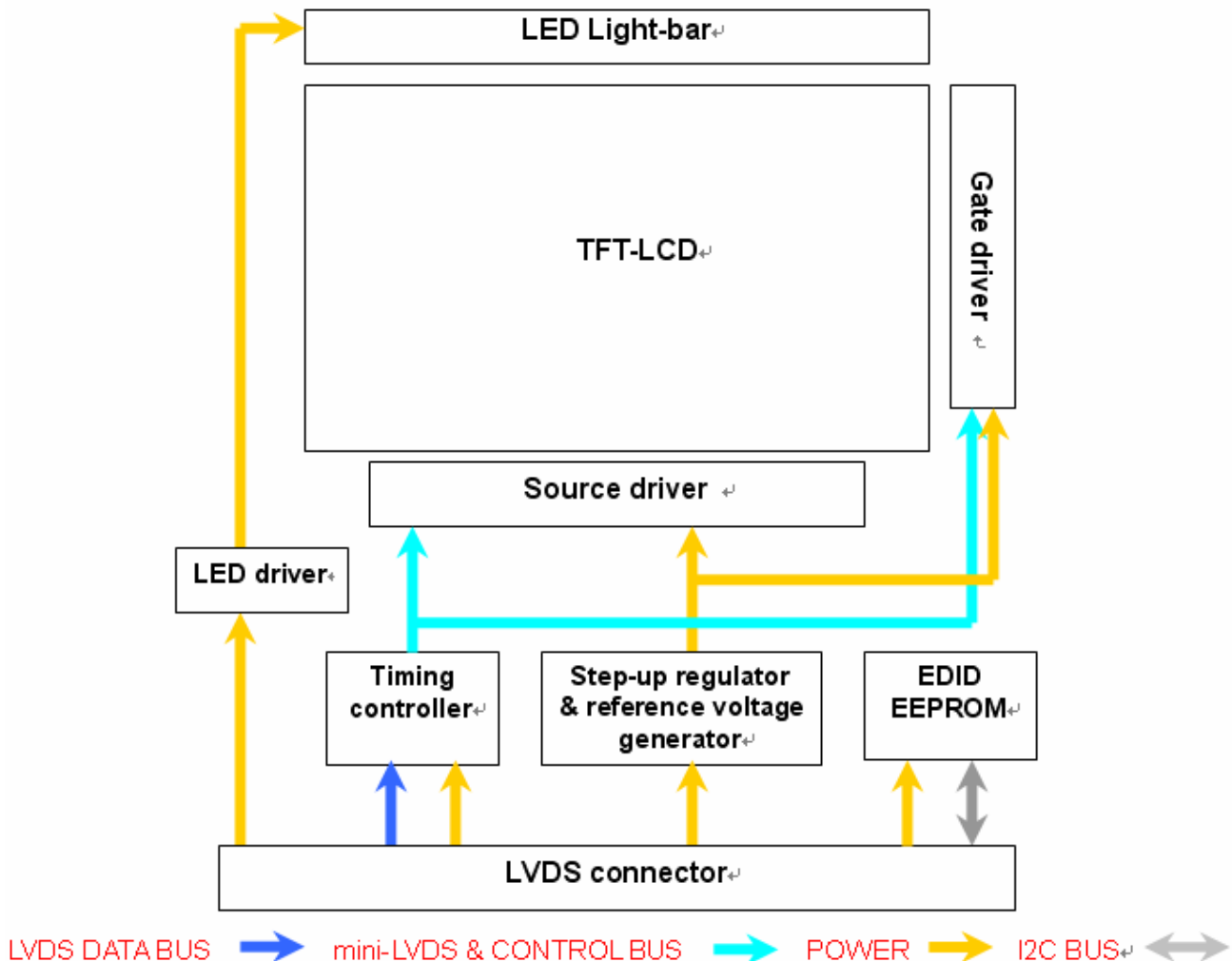
Driver device NT39708 (Novatek)

Parameter	Symbol	Min.	Typ.	Max.	Unit	Remark
LED Forward Voltage	V_F	2.8	3.2	3.4	Volt	T = 25°C
LED Forward Current	I_F		20		mA	T = 25°C
LED Driver Power Voltage	V_{LED}	7.5		21.0	Volt	T = 25°C
LED EN High Threshold	V_{ENH}	2.1			Volt	T = 25°C
LED EN Low Threshold	V_{ENL}			0.8	Volt	T = 25°C
PWM High Threshold	V_{PWMH}	2.1			Volt	T = 25°C
PWM Low Threshold	V_{PWML}			0.8	Volt	T = 25°C
Power consumption	P_{LED}		3.6	3.8	W	T = 25°C
Input PWM frequency	F_{PWM}	180		2000	Hz	T = 25°C
Duty ratio	-	5		100	%	Note 1
LED life time	-	15,000			Hr	T = 25°C , Note 2

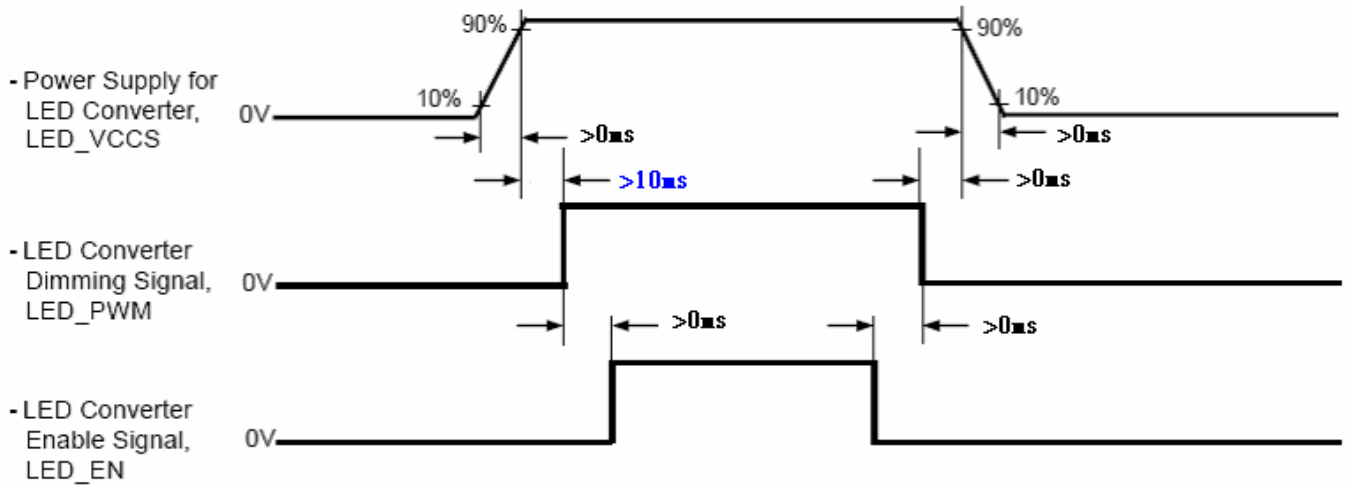
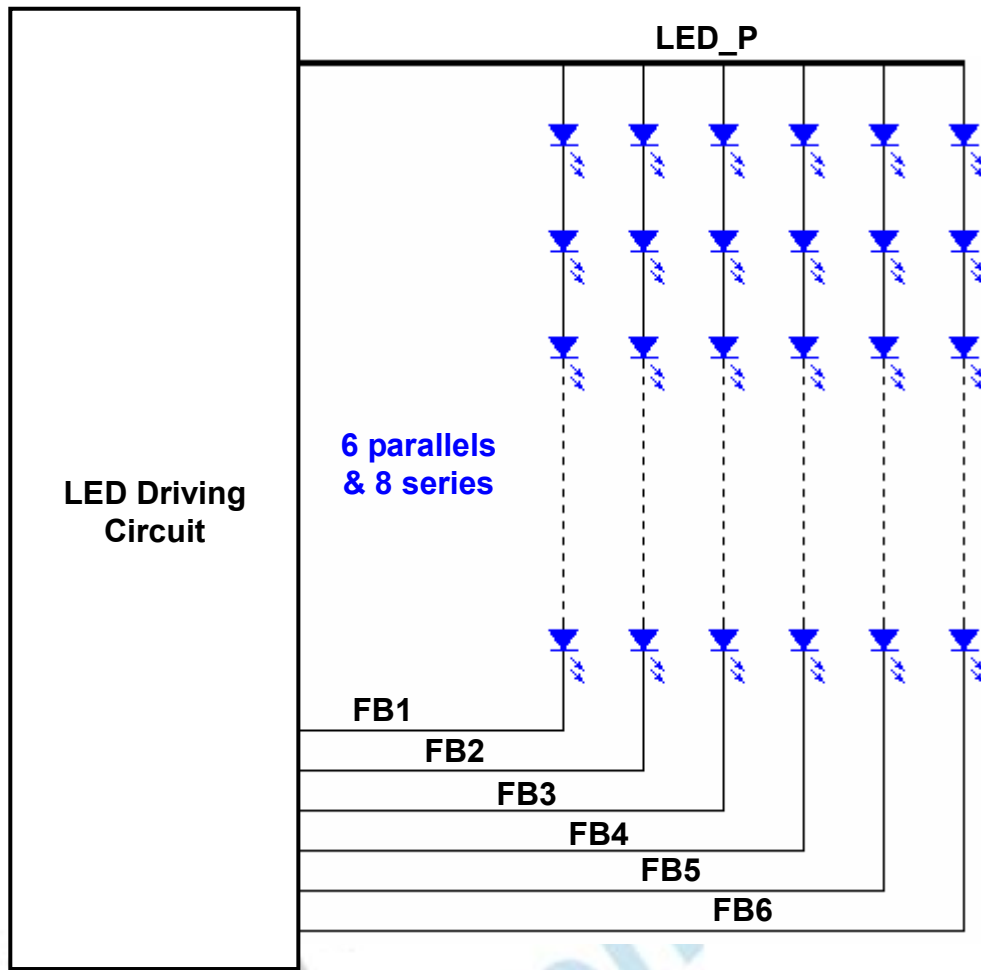
Note 1: PWM duty ratio linearity guarantees 20~100%

Note 2: LED life time definition is Brightness decrease to 50% of initial or abnormal lighting.

g. Module function block



h. LED circuit block & Power Sequence



版權屬於群創所有，禁止任何未經授權的使用

3. Optical specifications**Ambient temperature = 25°C**

Item	Symbol	Condition	Specification			Unit	Remark
			Min.	Typ.	Max.		
Response time	Tr+Tf	$\theta = 0^\circ$		8	16	ms	Note 3
Contrast ratio	CR	$\theta = 0^\circ$	500	600			Note 2,4
Viewing angle	Top	$CR \geq 10$	15			deg	Note 2,4,6
	Bottom	$CR \geq 10$	30				
	Left	$CR \geq 10$	40				
	Right	$CR \geq 10$	40				
Brightness (5 points average)	Y_L		200	220		nit	Note 2,5
Color chromaticity (CIE)	W_x	$\theta = 0^\circ$	-0.02	0.313	+0.02		Note 2
	W_y			0.329			
	R_x			0.620			
	R_y			0.340			
	G_x			0.330			
	G_y			0.605			
	B_x			0.150			
	B_y			0.070			
Color Gamut	NTSC	CIE1931	56	60		%	-
White uniformity	$\bar{\delta}_{W(5)}$		0.8				Note 2,7
	$\bar{\delta}_{W(13)}$		0.65				
Cross talk	Ct				2%		Note 8

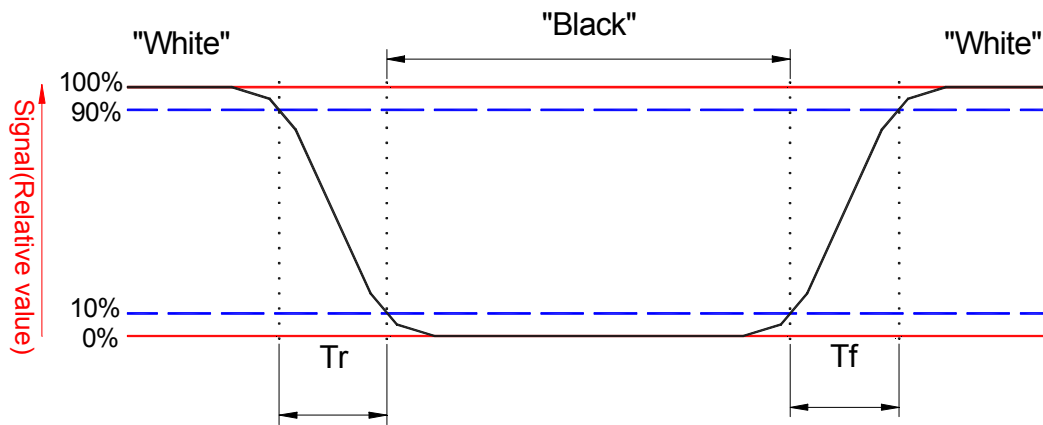
Note 1: To be measured in dark room.

Note 2: To be measured with a viewing cone of 2° by Topcon luminance meter BM-5A.

Note 3: Definition of response time:

The output signals of BM-7 are measured when the input signals are changed from "Black" to "White" (falling time) and from "White" to "Black" (rising time), respectively. The response time interval is between 10% and 90% of amplitudes. Refer to figure as below.

版權屬於群創所有，禁止任何未經授權的使用



Note 4: Definition of contrast ratio:

Contrast ratio is calculated with the following formula:

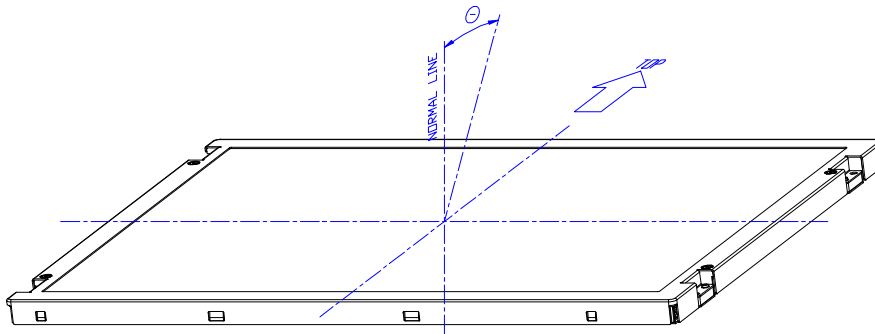
$$\text{Contrast ratio (Avg of 5pts)} = \frac{L_{\text{white (Avg of 5pts.)}}}{L_{\text{Black (Avg of 5pts.)}}}$$

Note 5: Driving current for LED should be 20 mA.

Luminance is measured at the following thirteen points (1~13):

$$Y_L = (Y_3 + Y_5 + Y_7 + Y_{11} + Y_{12}) / 5$$

Note 6: Definition of viewing angle



Note 7: Definition white uniformity

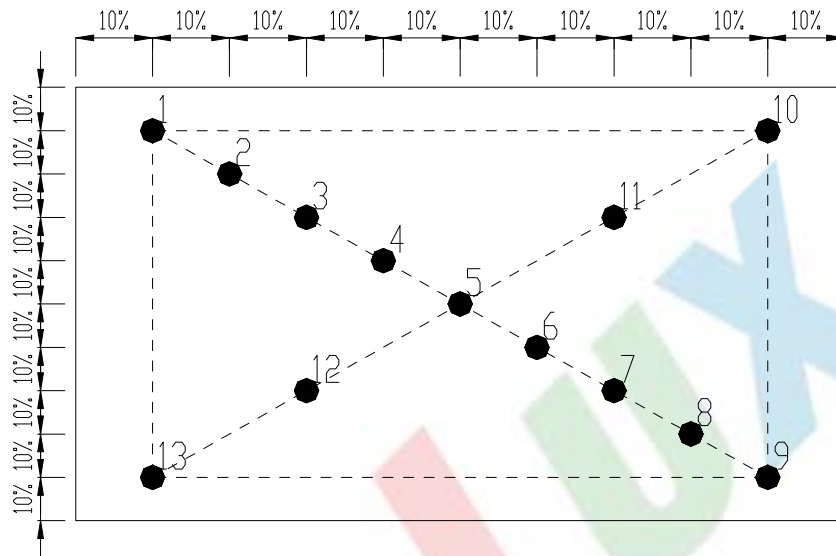
Luminance is measured at the following thirteen points (1~13):

$$\delta_{W(13)} = \frac{\text{Minimum brightness of thirteen points}}{\text{Maximum brightness of thirteen points}}$$

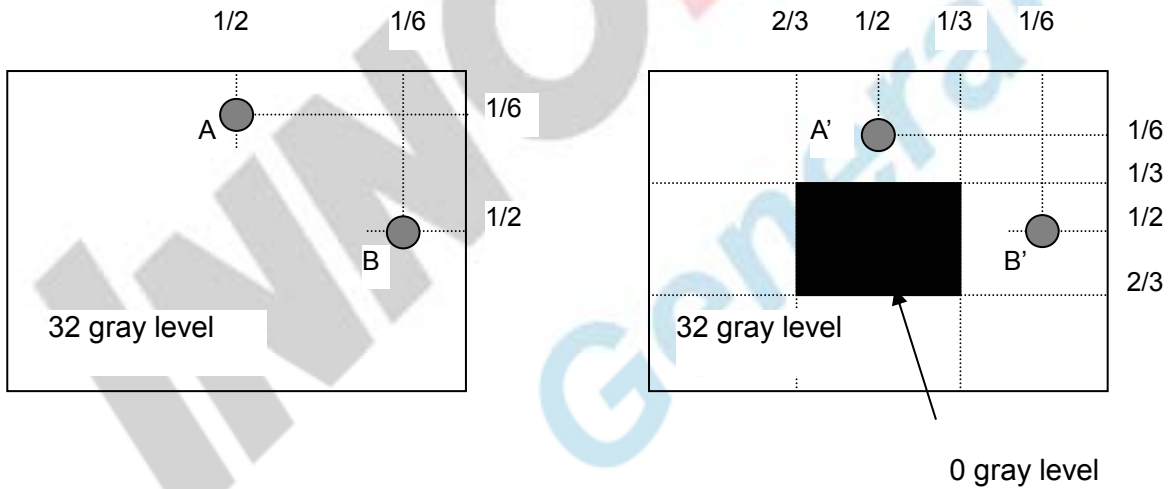
$$\delta_{W(5)} = \frac{\text{Minimum brightness of five points}}{\text{Maximum brightness of five points}}$$

版權屬於群創所有，禁止任何未經授權的使用

13 point measuring locations refer to the point 1, 2, 3, 4, 5, 6, 7, 8, 9, 10, 11, 12 and 13.
 5 point measuring locations refer to the point 3, 5, 7, 11 and 12.



Note 8:



Unit: percentage of dimension of display area

$|L_A - L_{A'}| / L_A \times 100\% = 2\% \text{ max.}$, L_A and $L_{A'}$ are brightness at location A and A'

$|L_B - L_{B'}| / L_B \times 100\% = 2\% \text{ max.}$, $L_{B'}$ and L_B are brightness at location B and B'

版權屬於群創所有，禁止任何未經授權的使用

4. Reliability test items

Test Item	Test Condition	Judgment	Remark
High temperature storage	60°C, 240 hours	Note 1	Note 2
Low temperature storage	-20°C, 240 hours	Note 1	Note 2
High temperature & high humidity operation	40°C, 90% RH, 240 hours (No condensation)	Note 1	Note 2
High temperature operation	50°C, 240 hours	Note 1	Note 2
Low temperature operation	0°C, 240 hours	Note 1	Note 2
Thermal Shock (Non-operation)	-20°C / 30 mins ~ 60°C / 30 mins 100 cycles	Note 1	Note 2
Electrostatic discharge (ESD)	150 pF, 330Ω, Contact: ±8kV, Air: ±15kV	Note 1	
Vibration (Non-operation)	1.5G, 10 to 500 Hz random; 0.5hr in each perpendicular axes (X, Y, Z).	Note 1	Note 2
Mechanical shock (Non-operation)	220G/2ms, Half sine wave, ±X, ±Y, ±Z one time for each direction	Note 1	Note 2

Note 1: Pass: Normal display image with no obvious non-uniformity and no line defect.

Fail: No display image, obvious non-uniformity, or line defects.

Partial transformation of the module parts should be ignored.

Note 2: Evaluation should be tested after storage at room temperature for more than one hour.

版權屬於群創所有，禁止任何未經授權的使用

5. Safety

5-1. Sharp edge requirements

There will be no sharp edges or corners on the display assembly that could cause injury.

5-2. Materials

a. Toxicity

There will be no carcinogenic materials used anywhere in the display module. If toxic materials are used, they will be reviewed and approved by the responsible InnoLux Toxicologist.

b. Flammability

All components including electrical components that do not meet the flammability grade UL94-V0 in the module will complete the flammability rating exception approval process. The printed circuit board will be made from material rated 94-V0 or better. The actual UL flammability rating will be printed on the printed circuit board.

c. Capacitors

If any polarized capacitors are used in the display assembly, provisions will be made to keep them from being inserted backwards.

6. Display quality

The display quality of the color TFT-LCD module should be in compliance with the InnoLux incoming inspection standard.

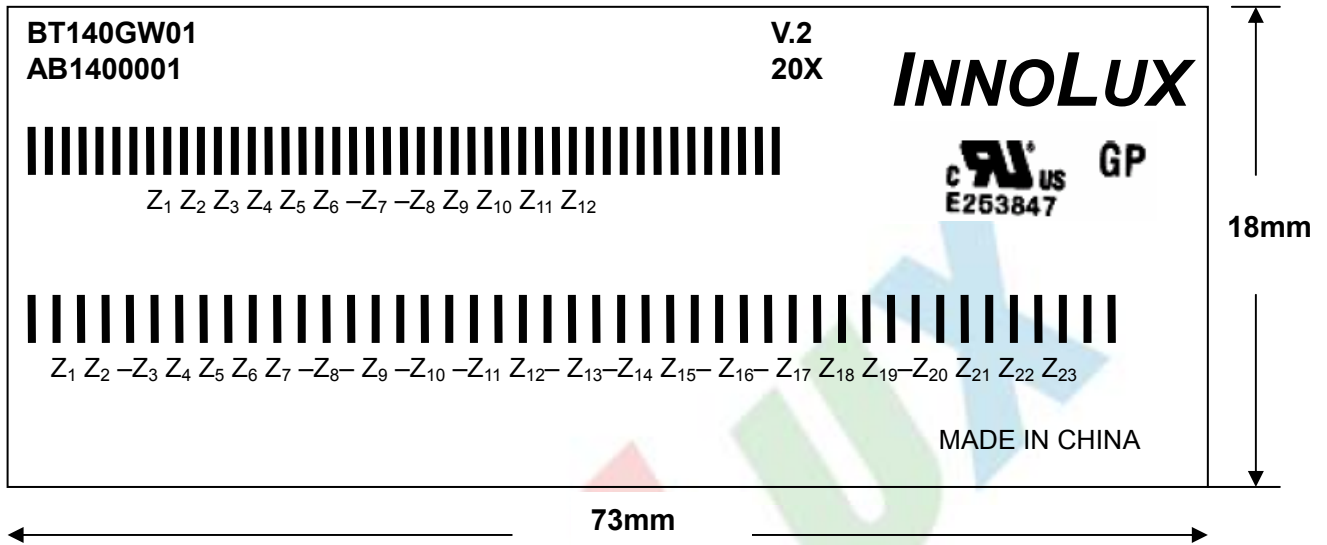
7. Handling precaution

- (1) Do not apply rough force such as bending or twisting to the module during assembly.
- (2) To assemble or install module into user's system can be only in clean working areas. The dust and oil may cause electrical short or worsen the polarizer.
- (3) It's not permitted to have pressure or impulse on the module because the LCD panel and backlight will be damaged.
- (4) Always follow the correct power sequence when LCD module is connecting and operating.
- (5) Do not pull the I/F connector in or out while the module is operating.
- (6) Do not disassemble the module.
- (7) Use a soft dry cloth without chemicals for cleaning, because the surface of polarizer is very soft and easily scratched.
- (8) It is dangerous that moisture come into or contacted the LCD module, because moisture may damage LCD module when it is operating.
- (9) High temperature or humidity may reduce the performance of module. Please store LCD module within the specified storage conditions.

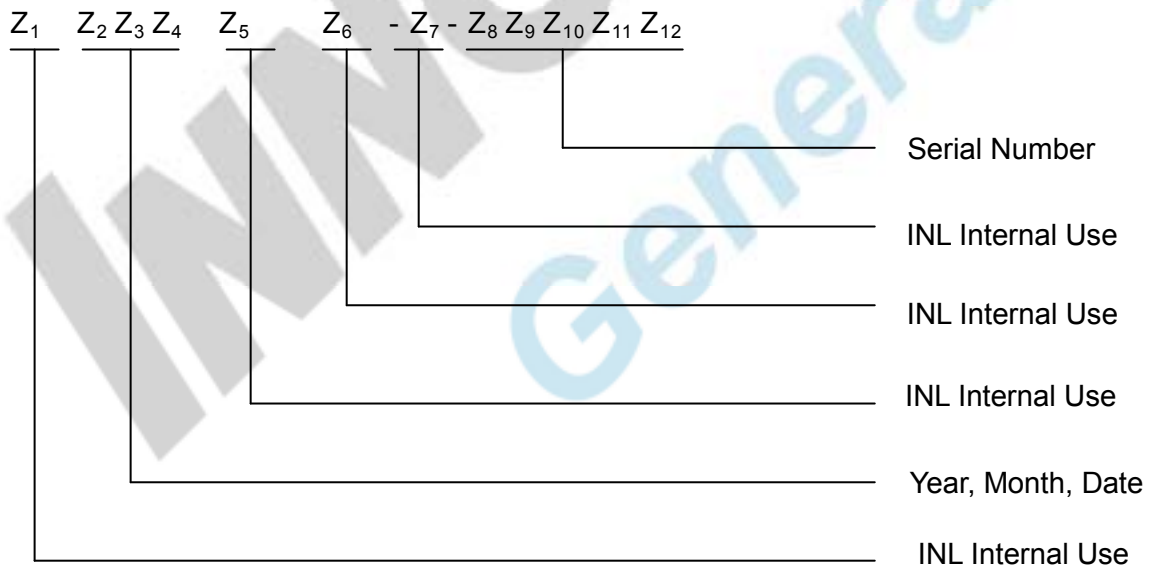
版權屬於群創所有，禁止任何未經授權的使用

8. Label Definition

8-1. Module label



- (1) Model Number : BT140GW01
- (2) Version : V.2
- (3) Product Number : AB140000120X
- (4) Serial ID I (INL Internal Use): Z₁Z₂Z₃Z₄Z₅Z₆-Z₇-Z₈Z₉Z₁₀Z₁₁Z₁₂



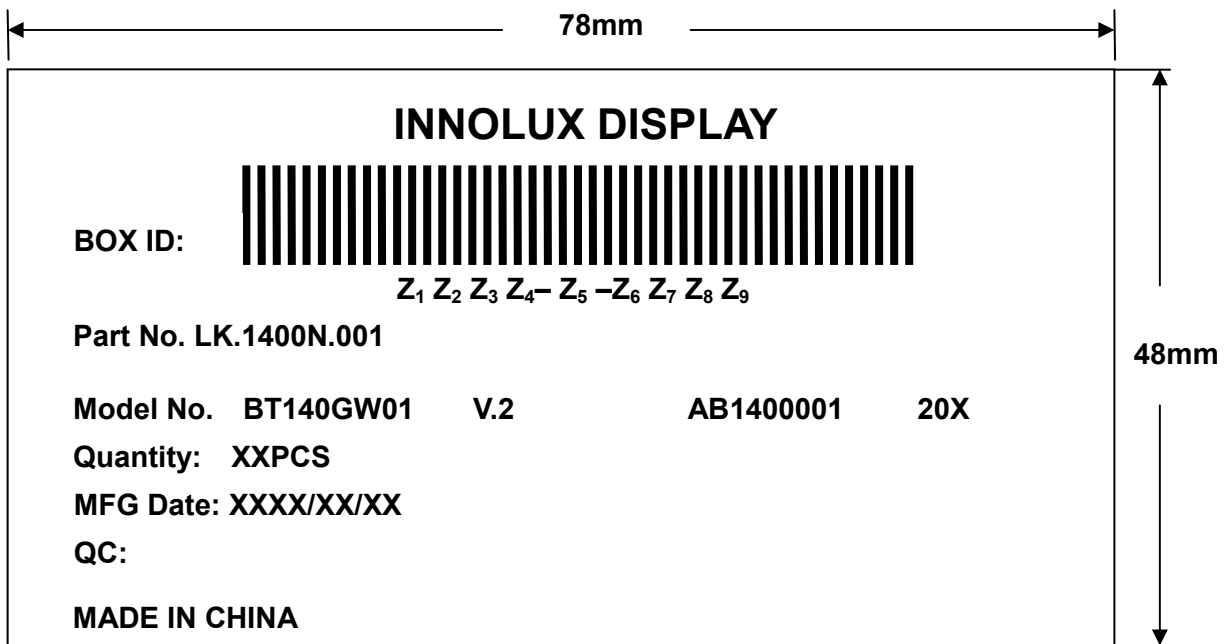
Serial ID includes the information as below:

- (a) Manufactured Date:
 - Year: 0~9, for 2000~2009;
 - Month: 1~9 & A~C for Jan.~Dec.;
 - Date: 1~9 & A~V for 1st~31st.
- (b) Serial Number: Module packing sequence number

(5) Serial ID II (INL Internal Use):

Z₁ Z₂ -Z₃ Z₄ Z₅ Z₆ Z₇ -Z₈- Z₉ -Z₁₀ -Z₁₁ Z₁₂- Z₁₃-Z₁₄ Z₁₅- Z₁₆- Z₁₇ Z₁₈ Z₁₉-Z₂₀ Z₂₁ Z₂₂ Z₂₃

8-2. Carton label



- (1) Model No. : BT140GW01
- (2) Version: V.2
- (3) Package Quantity :XXPCS
- (4) Serial ID:

Z₁ Z₂ Z₃ Z₄- Z₅ -Z₆ Z₇ Z₈ Z₉



Serial ID includes the information as below:

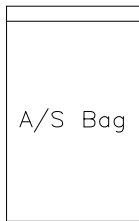
- (a) Manufactured Date:
 - Year: 0~9, for 2000~2009;
 - Month: 1~9 & A~C for Jan.~Dec.;
 - Date: 1~9 & A~V for 1st~31st.
- (b) Serial Number: Module packing sequence number

版權屬於群創所有，禁止任何未經授權的使用

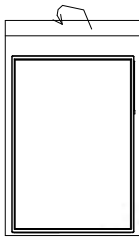
9. Packing Form



↓ Step A
Put LCM into A/S bag



↓ Step B
Turn back A/S bag



↓ Step C



Step D

Put LCM with A/S bag into a

Cushion

Carton

25pcs

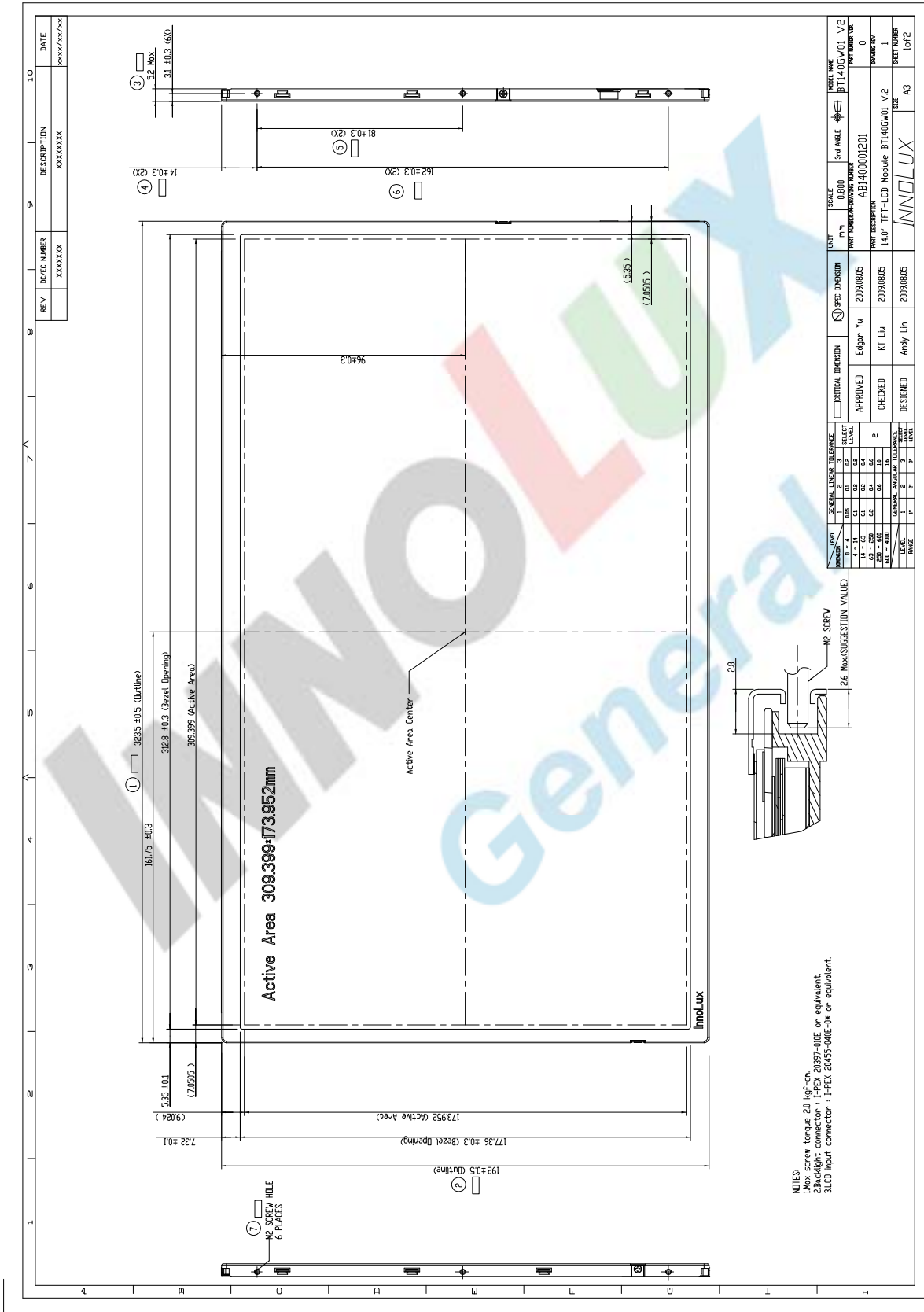
Step E

Step F

版權屬於群創所有，禁止任何未經授權的使用

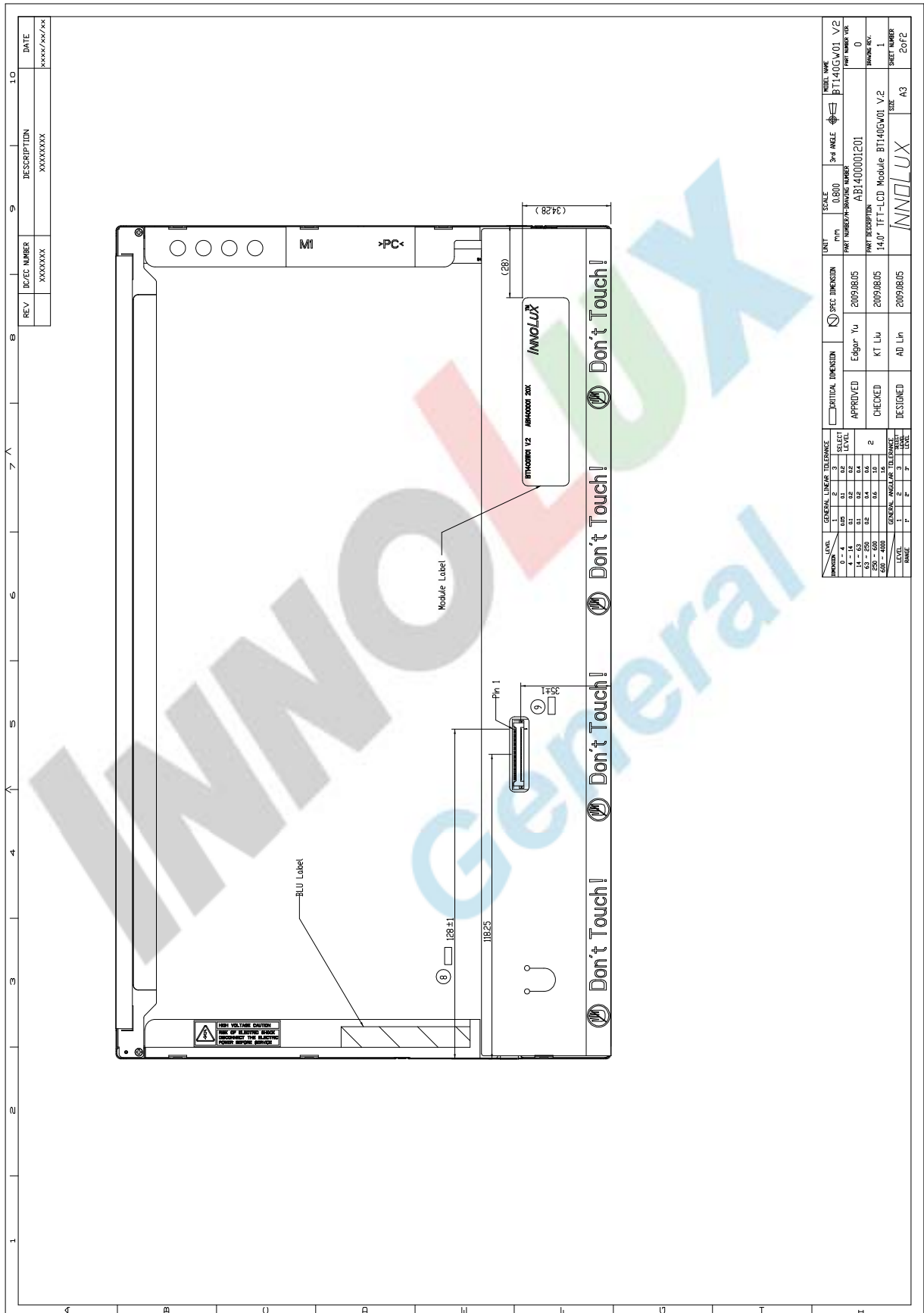
10. Mechanical Drawings

10-1 Front Side



版權屬於群創所有，禁止任何未經授權的使用

10-2 Rear side



REV	DEC NUMBER	DESCRIPTION	DATE
XXXXXX	XXXXXX	XXXXXXXX	XXXX/XX/XX

SCALE	UNIT	3rd ANGLE	MODEL NAME	BT140GW01 V2
0.800	MM	☐	PART NUMBER VER	0
APPROVED	EDGE	YU	PART NUMBER	AB1400001201
CHECKED	KT	LIU	DATE	1
DESIGNED	AD	LIU	SHEET NUMBER	2 of 2
GENERAL LINEAR TOLERANCE			INNOLUX	
GENERAL TOLERANCE			SIZE	
NAME			A3	

版權屬於群創所有，禁止任何未經授權的使用

Appendix: EDID Code

	Byte	Field Name and Comments	Value	Value
	(hex)		(hex)	(binary)
Header	0	Header	00	00000000
	1	Header	FF	11111111
	2	Header	FF	11111111
	3	Header	FF	11111111
	4	Header	FF	11111111
	5	Header	FF	11111111
	6	Header	FF	11111111
	7	Header	00	00000000
Vendor / Product EDID Version	8	EISA manufacture code = 3 Character ID	25	00100101
	9	EISA manufacture code (Compressed ASCII)	CC	11001100
	0A	Panel Supplier Reserved – Product Code	0C	00001100
	0B	Panel Supplier Reserved – Product Code	00	00000000
	0C	LCD module Serial No - Preferred but Optional (“0” if not used)	00	00000000
	0D	LCD module Serial No - Preferred but Optional (“0” if not used)	00	00000000
	0E	LCD module Serial No - Preferred but Optional (“0” if not used)	00	00000000
	0F	LCD module Serial No - Preferred but Optional (“0” if not used)	00	00000000
	10	Week of manufacture-->--	00	00000000
	11	Year of manufacture – 1990 (ex. 2005-1990=15) -->2009	13	00010011
	12	EDID structure version # = 1	01	00000001
	13	EDID revision # = 3	03	00000011
	Display Parameters	14	Video I/P definition = Digital I/P (80h)	80
15		Max H image size = (309.3=31 cm)	1F	00011111
16		Max V image size = (173.9=17 cm)	11	00010001
17		Display gamma = (gamma ×100)-100 = Example: (2.2×100) – 100 = 120	78	01111000
18		Feature support (no DPMS, Active off, RGB, timing BLK 1)	0A	00001010
Panel Color Coordinates	19	Red/Green Low bit (RxRy/GxGy)	C8	11001000
	1A	Blue/White Low bit (BxBY/WxWy)	85	10000101
	1B	Red x Rx=0.62	9E	10011110
	1C	Red y Ry=0.34	57	01010111
	1D	Green x Gx=0.33	54	01010100
	1E	Green y Gy=0.605	9B	10011011
	1F	Blue x Bx=0.15	26	00100110
	20	Blue y By=0.07	12	00010010
	21	White X Wx=0.313	50	01010000
22	White Y Wy=0.329	54	01010100	
Established Timings	23	Established timings 1 (00h if not used)	00	00000000
	24	Established timings 2 (00h if not used)	00	00000000
	25	Manufacturer’s timings (00h if not used)	00	00000000
Standard Timing ID	26	Standard timing ID1 (01h if not used)	01	00000001
	27	Standard timing ID1 (01h if not used)	01	00000001
	28	Standard timing ID2 (01h if not used)	01	00000001
	29	Standard timing ID2 (01h if not used)	01	00000001
	2A	Standard timing ID3 (01h if not used)	01	00000001
	2B	Standard timing ID3 (01h if not used)	01	00000001
	2C	Standard timing ID4 (01h if not used)	01	00000001
	2D	Standard timing ID4 (01h if not used)	01	00000001
	2E	Standard timing ID5 (01h if not used)	01	00000001
	2F	Standard timing ID5 (01h if not used)	01	00000001
	30	Standard timing ID6 (01h if not used)	01	00000001
	31	Standard timing ID6 (01h if not used)	01	00000001
	32	Standard timing ID7 (01h if not used)	01	00000001
	33	Standard timing ID7 (01h if not used)	01	00000001

	34	Standard timing ID8 (01h if not used)	01	00000001
	35	Standard timing ID8 (01h if not used)	01	00000001
Timing Descriptors #1	36	Pixel Clock/10,000 (LSB) (Pixel Clock=71.1MHz)	C6	11000110
	37	Pixel Clock/10,000 (MSB) (Pixel Clock=71.1MHz)	1B	00011011
	38	Horizontal Active = 1366 pixels (lower 8 bits)	56	01010110
	39	Horizontal Blanking (Thbp) = 127 pixels (lower 8 bits)	7F	01111111
	3A	Horizontal Active/Horizontal blanking (Thbp) (upper4:4 bits)	50	01010000
	3B	Vertical Active = 768 lines	00	00000000
	3C	Vertical Blanking (Tvbp) = 25 lines (DE Blanking typ. for DE only panels)	19	00011001
	3D	Vertical Active : Vertical Blanking (Tvbp) (upper4:4 bits)	30	00110000
	3E	Horizontal Sync, Offset (Thfp) = 31 pixels	1F	00011111
	3F	Horizontal Sync, Pulse Width = 21 pixels	15	00010101
	40	Vertical Sync, Offset (Tvfp) = 3 lines Sync Width = 4 lines	34	00110100
	41	Horizontal Vertical Sync Offset/Width upper 2 bits	00	00000000
	42	Horizontal Image Size =309mm	35	00110101
	43	Vertical image Size = 174 mm	AE	10101110
	44	Horizontal Image Size / Vertical image size	10	00010000
	45	Horizontal Border = 0 (Zero for Notebook LCD)	00	00000000
	46	Vertical Border = 0 (Zero for Notebook LCD)	00	00000000
	47	Signal (non-intr, norm, no stereo, sep sync, neq pol)	18	00011000
Timing Descriptors #2	48	Detailed timing/monitor	00	00000000
	49	descriptor #2	00	00000000
	4A		00	00000000
	4B		00	00000000
	4C		00	00000000
	4D		00	00000000
	4E		00	00000000
	4F		00	00000000
	50		00	00000000
	51		00	00000000
	52		00	00000000
	53		00	00000000
	54		00	00000000
	55		00	00000000
	56		00	00000000
	57		00	00000000
	58		00	00000000
59		00	00000000	
Timing Descriptor #3	5A	Detailed timing/monitor	00	00000000
	5B	Descriptor #3	00	00000000
	5C		00	00000000
	5D		FE	11111110
	5E		00	00000000
	5F	P/N 1 st Character "I"	49	01001001
	60	P/N 2 nd Character "N"	4E	01001110
	61	P/N 3 rd Character "L"	4C	01001100
	62		20	00100000
	63		20	00100000
	64		20	00100000
	65		20	00100000
	66		20	00100000
67		20	00100000	
68		20	00100000	
69		20	00100000	

	6A		20	00100000
	6B		20	00100000
Timing Descriptors #4	6C	Detailed timing/monitor	00	00000000
	6D	descriptor #4	00	00000000
	6E		00	00000000
	6F		00	00000000
	70		00	00000000
	71	Manufacture P/N "B"	42	01000010
	72	Manufacture P/N "T"	54	01010100
	73	Manufacture P/N "1"	31	00110001
	74	Manufacture P/N "4"	34	00110100
	75	Manufacture P/N "0"	30	00110000
	76	Manufacture P/N "G"	47	01000111
	77	Manufacture P/N "W"	57	01010111
	78	Manufacture P/N "0"	30	00110000
	79	Manufacture P/N "1"	31	00110001
	7A	Manufacture P/N "V"	56	01010110
	7B	Manufacture P/N "2"	32	00110010
Checksum	7C		20	00100000
	7D		20	00100000
	7E	Extension flag	00	00000000
	7F	Checksum	CE	11001110

版權屬於群創所有，禁止任何未經授權的使用