



BU806

SILICON DARLINGTON POWER TRANSISTORS

They are silicon epitaxial planar NPN power transistors in Darlington configuration mounted in a TO-220 plastic package.

They are high voltage, high current devices for fast switching applications.

Compliance to RoHS.

ABSOLUTE MAXIMUM RATINGS

Symbol	Ratings		Value	Unit
V_{CBO}	Collector-Base Voltage		400	V
V_{CEV}	Collector-Emitter Voltage		400	
V_{CEO}	Collector-Emitter Voltage		200	V
V_{EBO}	Emitter-Base Voltage		6	V
I_C	Collector Current		8	A
I_{CM}	Collector Peak Current		15	A
I_B	Base Current		2	A
P_T	Power Dissipation at Case Temperature	$T_{mb} < 25^\circ\text{C}$	60	W
t_J	Junction Temperature		150	°C
t_s	Storage Temperature range		-65 to +150	

THERMAL CHARACTERISTICS

Symbol	Ratings		Value	Unit
R_{thJC}	From Junction to Case Thermal Resistance		2.08	°C/W
R_{thJA}	From Junction to Free-Air Thermal Resistance		70	

BU806

ELECTRICAL CHARACTERISTICS

$T_C=25^{\circ}\text{C}$ unless otherwise noted

Symbol	Ratings	Test Condition(s)	Min	Typ	Max	Unit
V_{CEO}	Collector-Emitter Breakdown Voltage (*)	$I_C= 100 \text{ mA}, I_B= 0$	200	-	-	V
I_{CEO}	Collector Cutoff Current	$V_{CE} = 400 \text{ V}, V_{BE(\text{off})} = 6 \text{ V}$	-	-	100	μA
I_{CES}	Collector Cutoff Current	$V_{CE} = 400 \text{ V}, V_{BE(\text{off})} = 0 \text{ V}$	-	-	100	μA
I_{EBO}	Emitter Cutoff Current	$V_{EB} = 6 \text{ V}, I_C = 0$	-	-	3	mA
$V_{CE(\text{SAT})}$	Collector-Emitter saturation Voltage (*)	$I_C = 5 \text{ A}, I_B = 250 \text{ mA}$	-	-	1.5	V
$V_{BE(\text{SAT})}$	Base-Emitter Saturation Voltage (*)	$I_C = 5 \text{ A}, I_B = 250 \text{ mA}$	-	-	2.4	V
V_F	Diode forward Voltage (*)	$I_F = 7 \text{ A}$	-	-	3.5	V

SWITCHING TIMES.

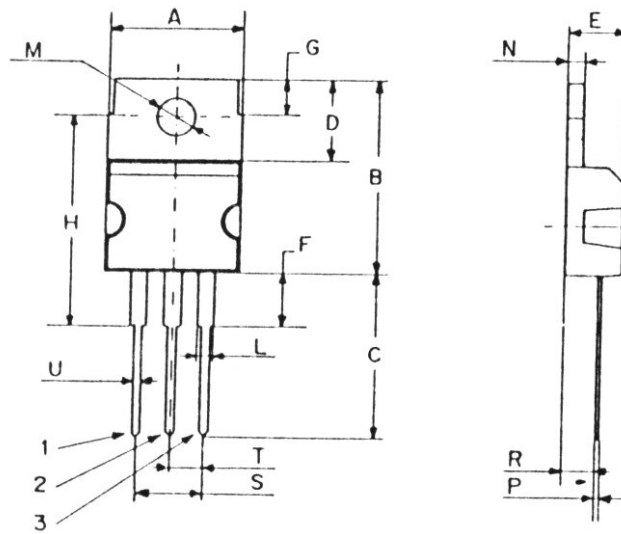
Symbol	Ratings	Test Condition(s)	Min	Typ	Max	Unit
t_{on}	turn-on time	$V_{CC} = 100 \text{ V}; I_C = 5 \text{ A}$ $I_{B1} = 50 \text{ mA}, I_{B2} = 500 \text{ mA}$	-	0.35	-	μs
t_s	Storage Time		-	0.55	-	
t_f	Fall Time		-	0.2	-	

(*) These parameters must be measured using pulse techniques, t_p 300 μs , Duty Cycle \angle 1.5%

BU806

MECHANICAL DATA CASE TO-220

DIMENSIONS (mm)		
	Min.	Max.
A	9,90	10,30
B	15,65	15,90
C	13,20	13,40
D	6,45	6,65
E	4,30	4,50
F	2,70	3,15
G	2,60	3,00
H	15,75	17,15
L	1,15	1,40
M	3,50	3,70
N	-	1,37
P	0,46	0,55
R	2,50	2,70
S	4,98	5,08
T	2,49	2,54
U	0,70	0,90



Pin 1 :	Base
Pin 2 :	Collector
Pin 3 :	Emitter
Package	Collector

Revised August 2012

Information furnished is believed to be accurate and reliable. However, Comset Semiconductors assumes no responsibility for the consequences of use of such information nor for any infringement of patents or other rights of third parties which may result from its use. Data are subject to change without notice. Comset Semiconductors makes no warranty, representation or guarantee regarding the suitability of its products for any particular purpose, nor does Comset Semiconductors assume any liability arising out of the application or use of any product and specifically disclaims any and all liability, including without limitation consequential or incidental damages. Comset Semiconductors' products are not authorized for use as critical components in life support devices or systems.