

# BUV20

## SWITCHMODE™ Series NPN Silicon Power Transistor

SWITCHMODE series NPN silicon power transistors are designed for high speed, high current, high power applications.

- High DC current gain:  
 $h_{FE} \text{ min} = 20 \text{ at } I_C = 25 \text{ A}$   
 $= 10 \text{ at } I_C = 50 \text{ A}$
- Low  $V_{CE(sat)}$ :  
 $V_{CE(sat)} \text{ max.} = 0.6 \text{ V at } I_C = 25 \text{ A}$   
 $= 0.9 \text{ V at } I_C = 50 \text{ A}$
- Very fast switching times:  
 $T_F = 0.25 \mu\text{s at } I_C = 50 \text{ A}$

### MAXIMUM RATINGS

Rating	Symbol	BUV20	BUV60	Unit
Collector-Emitter Voltage	$V_{CEO(sus)}$	125		Vdc
Collector-Base Voltage	$V_{CBO}$	160	260	Vdc
Emitter-Base Voltage	$V_{EBO}$	7		Vdc
Collector-Emitter Voltage ( $V_{BE} = -1.5 \text{ V}$ )	$V_{CEX}$	160	260	Vdc
Collector-Emitter voltage ( $R_{BE} = 100 \Omega$ )	$V_{CER}$	150	260	Vdc
Collector-Current — Continuous — Peak ( $PW \leq 10 \text{ ms}$ )	$I_C$ $I_{CM}$	50 60		Adc Apk
Base-Current continuous	$I_B$	10		Adc
Total Power Dissipation @ $T_C = 25^\circ\text{C}$	$P_D$	250		Watts
Operating and Storage Junction Temperature Range	$T_J, T_{stg}$	-65 to 200		$^\circ\text{C}$

### THERMAL CHARACTERISTICS

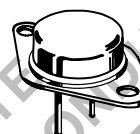
Characteristic	Symbol	BUV20	BUV60	Unit
Thermal Resistance, Junction to Case	$\theta_{JC}$	0.7		$^\circ\text{C/W}$



ON Semiconductor®

<http://onsemi.com>

**50 AMPERES  
NPN SILICON POWER  
METAL TRANSISTOR  
125 VOLTS, 250 WATTS**



CASE 197A-05  
TO-204AE  
(TO-3)

# BUV20

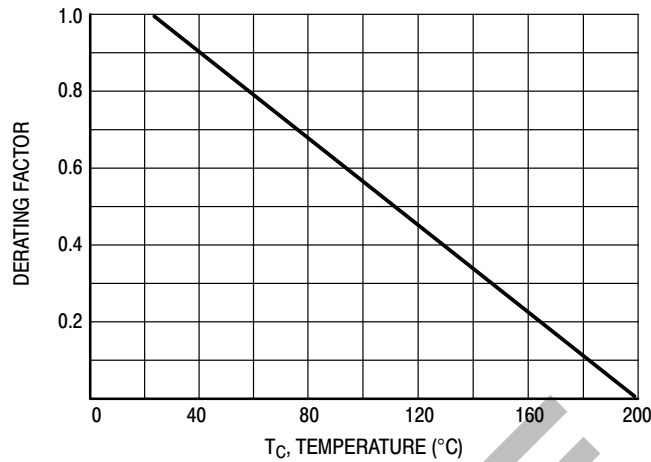


Figure 1. Power Derating

## ELECTRICAL CHARACTERISTICS (T<sub>C</sub> = 25°C unless otherwise noted)

Characteristic	Symbol	Min	Max	Unit
----------------	--------	-----	-----	------

### OFF CHARACTERISTICS<sup>1</sup>

Collector–Emitter Sustaining Voltage (I <sub>C</sub> = 200 mA, I <sub>B</sub> = 0, L = 25 mH)	BUV20, BUV60	V <sub>CEO(sus)</sub>	125		Vdc
Collector Cutoff Current at Reverse Bias (V <sub>CE</sub> = 140 V, V <sub>BE</sub> = -1.5 V) (V <sub>CE</sub> = 140 V, V <sub>BE</sub> = -1.5 V, T <sub>C</sub> = 125°C) (V <sub>CE</sub> = 260 V, V <sub>BE</sub> = -1.5 V)	BUV20 BUV20 BUV60	I <sub>CEX</sub>		3.0 12	mAdc
Collector–Emitter Cutoff Current (V <sub>CE</sub> = 100 V)	BUV20	I <sub>CEO</sub>		3.0	mAdc
Emitter–Base Reverse Voltage (I <sub>E</sub> = 50 mA)	BUV20, BUV60	V <sub>EBO</sub>	7		V
Emitter–Cutoff Current (V <sub>EB</sub> = 5 V)	BUV20, BUV60	I <sub>EBO</sub>		1.0	mAdc

### SECOND BREAKDOWN

Second Breakdown Collector Current with base forward biased (V <sub>CE</sub> = 20 V, t = 1 s) (V <sub>CE</sub> = 40 V, t = 1 s)		I <sub>S/b</sub>	12 1.5		Adc
---	--	------------------	-----------	--	-----

### ON CHARACTERISTICS<sup>1</sup>

DC Current Gain (I <sub>C</sub> = 25 A, V <sub>CE</sub> = 2 V) (I <sub>C</sub> = 50 A, V <sub>CE</sub> = 4 V)	BUV20 BUV20	h <sub>FE</sub>	20 10	60 –	
Collector–Emitter Saturation Voltage (I <sub>C</sub> = 25 A, I <sub>B</sub> = 2.5 A) (I <sub>C</sub> = 50 A, I <sub>B</sub> = 5 A)	BUV20 BUV20	V <sub>CE(sat)</sub>		0.6 1.2	Vdc
Base–Emitter Saturation Voltage (I <sub>C</sub> = 50 A, I <sub>B</sub> = 5 A)0	BUV20	V <sub>BE(sat)</sub>		2.0	Vdc
Collector–Emitter Saturation Voltage (I <sub>C</sub> = 25 A, I <sub>B</sub> = 1.25 A) (I <sub>C</sub> = 50 A, I <sub>B</sub> = 5 A) (I <sub>C</sub> = 60 A, I <sub>B</sub> = 7.5 A)	BUV60 BUV60 BUV60	V <sub>CE(sat)</sub>		0.9 0.9 1.2	Vdc
Base–Emitter Saturation Voltage (I <sub>C</sub> = 50 A, I <sub>B</sub> = 5 A) (I <sub>C</sub> = 60 A, I <sub>B</sub> = 7.5 A)	BUV60 BUV60	V <sub>BE(sat)</sub>		1.6 1.8	Vdc

### DYNAMIC CHARACTERISTICS

Current Gain — Bandwidth Product (V <sub>CE</sub> = 15 V, I <sub>C</sub> = 2 A, f = 4 MHz)		f <sub>T</sub>	8.0		MHz
---	--	----------------	-----	--	-----

# BUV20

## ELECTRICAL CHARACTERISTICS ( $T_C = 25^\circ\text{C}$ unless otherwise noted)

Characteristic	Symbol	Min	Max	Unit
<b>SWITCHING CHARACTERISTICS (Resistive Load)</b>				
Turn-on Time	$(I_C = 50\text{ A}, I_{B1} = I_{B2} = 5\text{ A}, V_{CC} = 30\text{ V}, R_C = 0.6\ \Omega)$	$t_{on}$	1.5	$\mu\text{s}$
Storage Time		$t_s$	1.2	
Fall Time		$t_f$	0.25	

<sup>1</sup> Pulse Test: Pulse Width  $\leq 300\ \mu\text{s}$ , Duty Cycle  $\leq 2\%$ .

**OBSOLETE**  
THIS DEVICE IS OBSOLETE  
PLEASE CONTACT YOUR ON SEMICONDUCTOR  
REPRESENTATIVE FOR INFORMATION

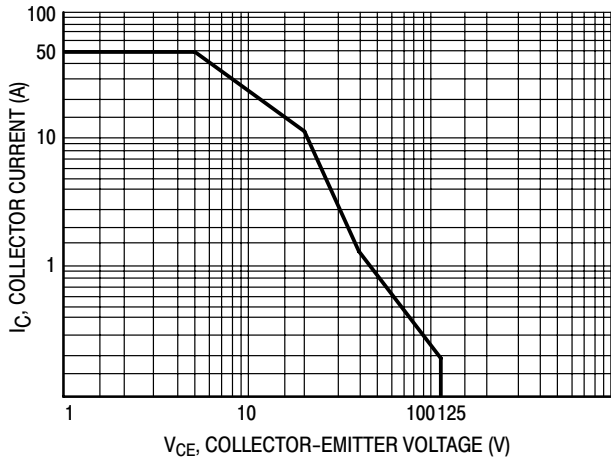


Figure 2. Active Region Safe Operating Area

There are two limitations on the power handling ability of a transistor: average junction temperature and second breakdown. Safe operating area curves indicate  $I_C - V_{CE}$  limits of the transistor that must be observed for reliable operation i.e., the transistor must not be subjected to greater dissipation than the curves indicate.

The data of Figure 2 is based on  $T_C = 25^\circ\text{C}$ .  $T_{J(pk)}$  is variable depending on power level. Second breakdown limitations do not derate the same as thermal limitations.

At high case temperatures, thermal limitations will reduce the power that can be handled to values less than the limitations imposed by second breakdown.

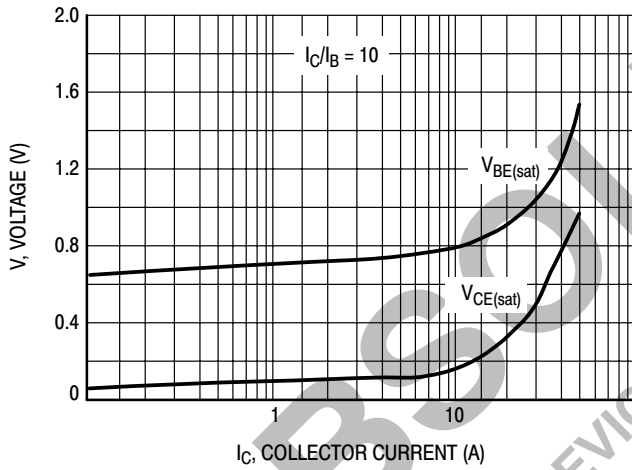


Figure 3. "On" Voltages

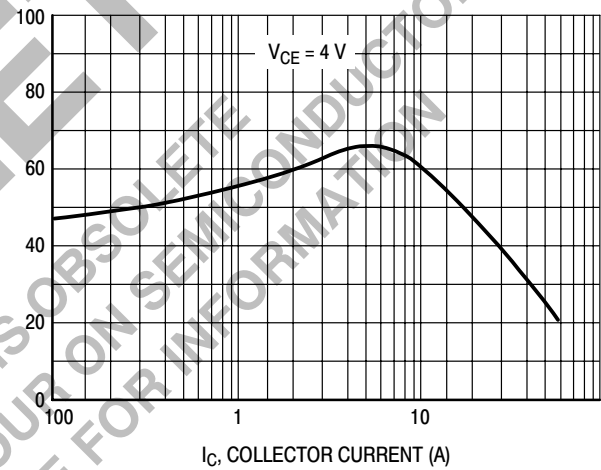


Figure 4. DC Current Gain

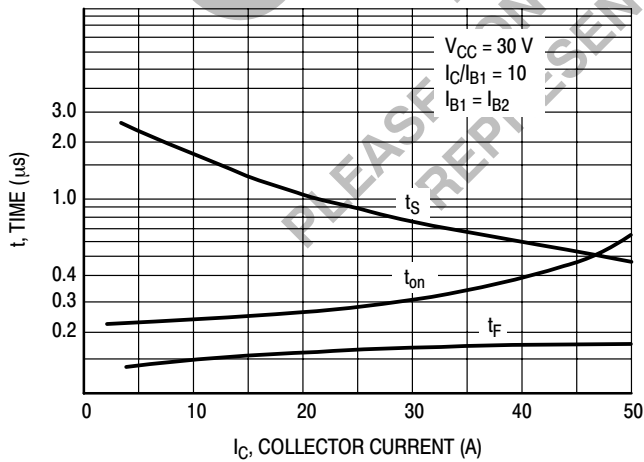


Figure 5. Resistive Switching Performance

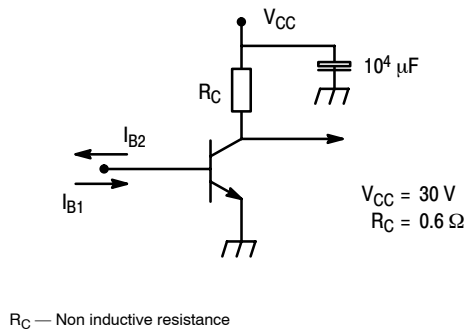
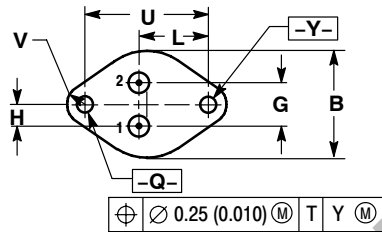
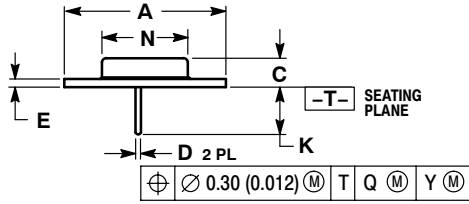


Figure 6. Switching Times Test Circuit

# BUV20

## PACKAGE DIMENSIONS

TO-204AE (TO-3)  
CASE 197A-05  
ISSUE J



- NOTES:  
1. DIMENSIONING AND TOLERANCING PER ANSI Y14.5M, 1982.  
2. CONTROLLING DIMENSION: INCH.

DIM	INCHES		MILLIMETERS	
	MIN	MAX	MIN	MAX
A	1.530 REF		38.86 REF	
B	0.990	1.050	25.15	26.67
C	0.250	0.335	6.35	8.51
D	0.057	0.063	1.45	1.60
E	0.060	0.070	1.53	1.77
G	0.430 BSC		10.92 BSC	
H	0.215 BSC		5.46 BSC	
K	0.440	0.480	11.18	12.19
L	0.665 BSC		16.89 BSC	
N	0.760	0.830	19.31	21.08
Q	0.151	0.165	3.84	4.19
U	1.187 BSC		30.15 BSC	
V	0.131	0.188	3.33	4.77

SWITCHMODE is a trademark of Semiconductor Components Industries, LLC (SCILLC)

ON Semiconductor and are registered trademarks of Semiconductor Components Industries, LLC (SCILLC). SCILLC reserves the right to make changes without further notice to any products herein. SCILLC makes no warranty, representation or guarantee regarding the suitability of its products for any particular purpose, nor does SCILLC assume any liability arising out of the application or use of any product or circuit, and specifically disclaims any and all liability, including without limitation special, consequential or incidental damages. "Typical" parameters which may be provided in SCILLC data sheets and/or specifications can and do vary in different applications and actual performance may vary over time. All operating parameters, including "Typicals" must be validated for each customer application by customer's technical experts. SCILLC does not convey any license under its patent rights nor the rights of others. SCILLC products are not designed, intended, or authorized for use as components in systems intended for surgical implant into the body, or other applications intended to support or sustain life, or for any other application in which the failure of the SCILLC product could create a situation where personal injury or death may occur. Should Buyer purchase or use SCILLC products for any such unintended or unauthorized application, Buyer shall indemnify and hold SCILLC and its officers, employees, subsidiaries, affiliates, and distributors harmless against all claims, costs, damages, and expenses, and reasonable attorney fees arising out of, directly or indirectly, any claim of personal injury or death associated with such unintended or unauthorized use, even if such claim alleges that SCILLC was negligent regarding the design or manufacture of the part. SCILLC is an Equal Opportunity/Affirmative Action Employer. This literature is subject to all applicable copyright laws and is not for resale in any manner.

### PUBLICATION ORDERING INFORMATION

**LITERATURE FULFILLMENT:**  
Literature Distribution Center for ON Semiconductor  
P.O. Box 5163, Denver, Colorado 80217 USA  
**Phone:** 303-675-2175 or 800-344-3860 Toll Free USA/Canada  
**Fax:** 303-675-2176 or 800-344-3867 Toll Free USA/Canada  
**Email:** orderlit@onsemi.com

**N. American Technical Support:** 800-282-9855 Toll Free  
USA/Canada  
**Europe, Middle East and Africa Technical Support:**  
Phone: 421 33 790 2910  
**Japan Customer Focus Center**  
Phone: 81-3-5773-3850

**ON Semiconductor Website:** [www.onsemi.com](http://www.onsemi.com)  
**Order Literature:** <http://www.onsemi.com/orderlit>  
For additional information, please contact your local Sales Representative