

# Precision Fixed Attenuator

## BW-K6-2W44+

50Ω 2W 6dB DC to 40 GHz



### Maximum Ratings

Operating Temperature	-55°C to 100°C**
Storage Temperature	-55°C to 100°C

\*\*with mated connectors. Unmated, 85°C max.  
Permanent damage may occur if any of these limits are exceeded.

### Features

- DC to 40 GHz
- precise attenuation
- excellent VSWR, 1.20 typ.
- passivated stainless steel connectors

CASE STYLE: FF1653

Connectors	Model	Price	Qty.
2.9mm Fem - 2.9 Male	BW-K6-2W44+	\$149.95 ea.	(1-24)

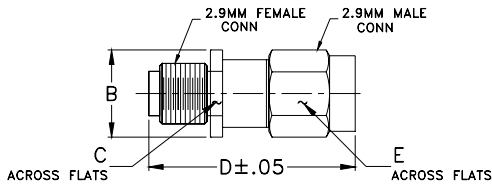
### Applications

- matching
- instrumentation
- test set-ups

### +RoHS Compliant

The +Suffix identifies RoHS Compliance. See our web site for RoHS Compliance methodologies and qualifications

### Outline Drawing



### Outline Dimensions (inch/mm)

B	C	D	E	wt
.36	.312	.88	.312	grams
9.14	7.92	22.35	7.92	4.73

### Electrical Specifications at 25°C

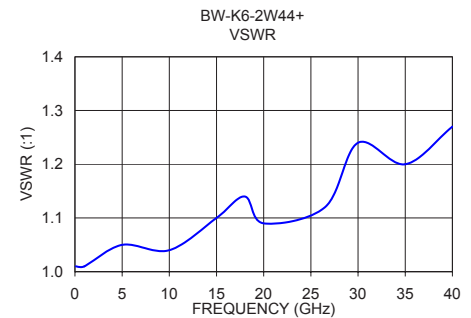
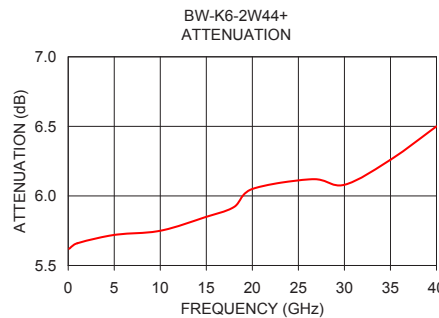
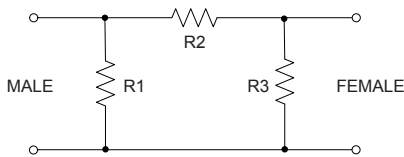
Parameter	Condition (GHz)	Min.	Typ.	Max.	Unit
<b>Frequency Range</b>		DC	—	40	GHz
<b>Attenuation<sup>1</sup></b>	DC - 40	—	6	—	dB
	DC - 26.5	5.5	—	6.5	
	26.5 - 37	5.2	—	6.8	
	37 - 40	5.2	—	7.2	
<b>VSWR</b>	DC - 18	—	1.06	1.3	:1
	18 - 26.5	—	1.09	1.4	
	26.5 - 40	—	1.50	1.5	
<b>Input Power<sup>2</sup></b>	DC - 40	—	—	2	W

1. At 25°C, accuracy includes frequency and power variations. Temperature coefficient for attenuation: .0004dB/dB/°C typ.
2. Max. power at 25°C ambient, derate linearly to 0.575W at 100°C.

### Typical Performance Data

Frequency (GHz)	Attenuation (dB)	VSWR (:1)
0.10	5.62	1.01
1.00	5.66	1.01
5.00	5.72	1.05
10.00	5.75	1.04
15.00	5.85	1.10
18.00	5.92	1.14
20.00	6.05	1.09
26.50	6.12	1.12
30.00	6.08	1.24
40.00	6.50	1.27

### Simplified Electrical Schematic



### Notes

- Performance and quality attributes and conditions not expressly stated in this specification document are intended to be excluded and do not form a part of this specification document.
- Electrical specifications and performance data contained in this specification document are based on Mini-Circuit's applicable established test performance criteria and measurement instructions.
- The parts covered by this specification document are subject to Mini-Circuits standard limited warranty and terms and conditions (collectively, "Standard Terms"); Purchasers of this part are entitled to the rights and benefits contained therein. For a full statement of the Standard Terms and the exclusive rights and remedies thereunder, please visit Mini-Circuits' website at [www.minicircuits.com/MCLStore/terms.jsp](http://www.minicircuits.com/MCLStore/terms.jsp)

