

BXA40 Series

Single output

Total Power: 40W
Input Voltage: 18 - 36VDC
36 - 75VDC
of Outputs: Single

Special Features

- Pin-compatible with NFC40 Series
- Meets telecom power supply interface standard ETS300-132-2
- EN60950, CSA C22.2 No. 950 and UL1950 safety approvals
- EN61000-4-2, -3, -4, -5, -6 immunity compliant
- Fixed frequency operation at 350 kHz typ.
- MTBF in excess of 500,000 hours
- Basic insulation system with 1500 Vdc isolation
- Remote sense on low voltage logic outputs
- Output voltage trim
- Available RoHS compliant
- 2 year warranty

Safety

VDE0805/EN60950/IEC950
File No. 14501-3336-7009
Licence No. 6296

UL1950 File No. E174104

CSA C22.2 No. 950
File No. LR41062C



Rev.03.08.07
bxa40s
1 of 4

The BXA40 Series providing up to 40 Watts, has been conceived as an applications specific range of dc-dc converters, specifically addressing telecommunications, industrial electronics, test equipment, mobile telecommunications and distributed power applications. The series offers two wide input voltage ranges, 18 Vdc to 36 Vdc and 36 Vdc to 75 Vdc, and is available with single outputs from 2.9 V to 12 V. The BXA40 series is designed to meet ETSI telecoms interface standards ETS300-132-2. Together with internal filtering, safety approval to IEC950 and basic insulation, the 48 V models are ideal for telecommunications applications. The 24 V models are particularly suited to industrial and test equipment applications, featuring EN61000-4-2, -3, -4, -5 and -6 immunity compliance. Other features include low output ripple, overvoltage protection, indefinite short circuit protection, remote enable and remote sense.



Specifications

All specifications are typical at nominal input, full load at 25°C unless otherwise stated.

OUTPUT SPECIFICATIONS

Voltage adjustability		±10%
Line regulation	Low line to high line	±0.3%
Load regulation	Full load to no load	±1.0%
Ripple and noise (20 MHz bandwidth)	2.9 V and 3.3 V	30 mV pk-pk
	5 V	50 mV pk-pk
	12 V	100 mV pk-pk
	All models	20 mV rms
Temperature coefficient		±0.02%/°C
Overvoltage protection	(See Note 9)	135% Vout
Short circuit protection	(See Note 10)	Continuous
Transient response	25% to 100% load (See Note 11)	4.0%
Voltage accuracy		±1.0% ≤5 V, ±2.0% ≥12 V
Remote sense (See Note 8)	Compensated line drops up to 0.5 V on 5 V models	
	Compensated line drop up to 300 mV on 2.9 V and 3.3 V models	

INPUT SPECIFICATIONS

Input voltage range	24 Vin nominal	18-36 Vdc
	48 Vin nominal	36-75 Vdc
Reverse voltage protection		(See Note 5)
Max. input rise and fall time	48 V	5 V/ms ETS300-132
Start-up time		30 ms typ.
Remote ON/OFF Logic compatibility		CMOS/TTL Open-circuit <1 Vdc

EMC CHARACTERISTICS

Conducted emissions	EN55022, FCC part 15, (See Notes 4 and 13)	Level B
Radiated emissions	EN55022, FCC part 15	Level A
ESD air	EN61000-4-2, level 3	Perf. criteria 1
ESD contact	EN61000-4-2, level 4	Perf. criteria 1
Surge	EN61000-4-5, level 3	Perf. criteria 1
Fast transients	EN61000-4-4, level 3	Perf. criteria 1
Radiated immunity	EN61000-4-3, level 3	Perf. criteria 1
Conducted immunity	EN61000-4-6, level 3	Perf. criteria 1

GENERAL SPECIFICATIONS

Efficiency		See table
Isolation voltage	Input/output	1500 Vdc
	Input/case	1500 Vdc
Switching frequency	Fixed	350 kHz typ.
Approvals and standards		EN60950, UL1950 CSA C22.2 No. 950
Case material		Aluminum substrate with plastic case
Material flammability		UL94V-0
Weight		85 g (3.0 oz)
MTBF	MIL-HDBK-217F	500,000 hours
Size		2.2 x 2.2 x 0.5 inches 55.9 x 55.9 x 12.7 mm

ENVIRONMENTAL SPECIFICATIONS

Thermal performance	Baseplate operating temperature	-40 °C to +105 °C
	Non-operating	-55 °C to +105 °C
Thermal impedance (See Note 6)	No air flow, no heatsink	8.5 °C/W
	No air flow, with heatsink	7.2 °C/W

Specifications Contd.

INPUT VOLTAGE	OUTPUT VOLTAGE	OUTPUT CURRENT (MAX.)	INPUT CURRENT ⁽¹⁾	TYPICAL EFFICIENCY	REGULATION		MODEL NUMBER ^(12,14,15)
					LINE ⁽²⁾	LOAD ⁽³⁾	
18-36 Vdc	3.3 V	7 A	70 mA	75%	0.3%	1.0%	BXA40-24S3V3-SMJ ⁽⁸⁾
18-36 Vdc	5 V	8 A	40 mA	81%	0.3%	1.0%	BXA40-24S05-MJ ⁽⁸⁾
36-75 Vdc	2.9 V	6.9 A	40 mA	77%	0.3%	1.0%	BXA40-48S2V9-SMJ ⁽⁸⁾
36-75 Vdc	5 V	8.0 A	30 mA	82%	0.3%	1.0%	BXA40-48S05-MJ ⁽⁸⁾
36-75 Vdc	12 V	3.3 A	30 mA	87%	0.3%	1.0%	BXA40-48S12-MJ

Notes

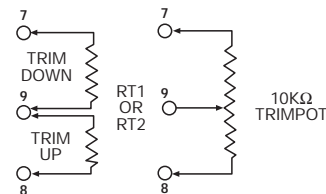
- Nominal line, at no load.
- Low line to high line at full load.
- Full load to no-load at nominal line.
- For conducted noise operation of the BXA40 to VDE0871, VDE0878 and EN55022 level B, see BXA40 Design Note 101.
- Reverse voltage protection can be implemented by putting a slow blow fuse on the positive input rail. Rate the fuse at 200 Vdc, 1.5 A for 48 Vdc inputs and 100 V, 4.5 A for 24 Vdc input units.
- The maximum operating ambient temperature, without derating depends on internal power dissipation and hence efficiency and cooling method. Download BXA40 Design Note 101 which provides detailed thermal calculations and design-in hints from the Artesyn website.
- Do not exceed a dv/dt rate of 100 V per second at the trim pin input if output current is less than 0.4% I_o max.
- Remote sense is offered as standard on the 2.9 V and 3.3 V products. The BXA40-24S05J and BXA40-48S05J come with remote sense as an option. Remote sense design is designated by the suffix '-S' e.g. **BXA40-48S05-SMJ** (for units with metric inserts), **BXA40-48S05-SJ** (for units with imperial inserts). For models without remote sense option, pin 5 and pin 6 are absent.
- Overvoltage protection is 118% on 3.3 V output model.
- For 2.9 V output, no short circuit protection above 90 °C baseplate temp.
- Transient response, 25% to 100% load, 10% for 2.9 V and 3.3 V models.
- Units with the suffix '-M' at the end of the model number are offered as standard with metric threaded inserts (M3). To order units with imperial threaded inserts (4-40 UNC) please remove the suffix '-M' from the model number. These inserts are used for bolting the unit to a PCB and/or fixing heatsinks.
- An external filter capacitor is necessary for safe operation of the 24 V input models. It is also suggested that an external filter capacitor be used on the 48 V input models. A 4 μF (or greater) film capacitor such as: ITW Paktron Capstick series, part number 405K100CS4 4 μF/100 V is recommended, if filtering is not used. See BXA40 Design Note 101.
- The 'J' suffix indicates that these parts are Pb-free (RoHS 6/6) compliant. TSE RoHS 5/6 (non Pb-free) compliant versions may be available on special request, please contact your local sales representative for details.
- NOTICE: Some models do not support all options. Please contact your local Artesyn representative or use the on-line model number search tool at <http://www.artesyn.com/powergroup/products.htm> to find a suitable alternative.

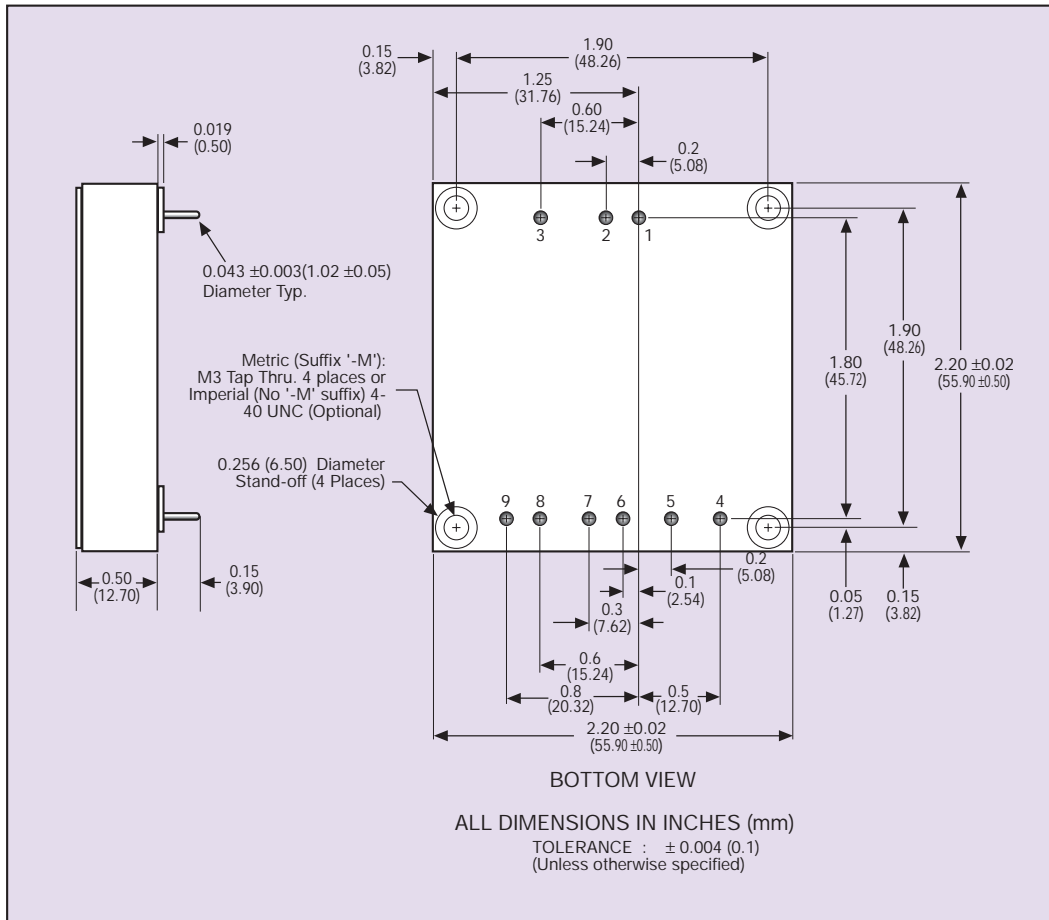
PIN CONNECTIONS

PIN NUMBER	SINGLE OUTPUT
1	+ Input
2	- Input
3	Control
4	No Connection
5	- Sense ⁽⁸⁾
6	+ Sense ⁽⁸⁾
7	+ Output
8	Common
9	Trim

EXTERNAL OUTPUT TRIMMING

Output can be externally trimmed by ±10% using either method shown below.





Americas

5810 Van Allen Way
Carlsbad, CA 92008
USA
Telephone: +1 760 930 4600
Facsimile: +1 760 930 0698

Europe (UK)

Waterfront Business Park
Merry Hill, Dudley
West Midlands, DY5 1LX
United Kingdom
Telephone: +44 (0) 1384 842 211
Facsimile: +44 (0) 1384 843 355

Asia (HK)

16th - 17th Floors, Lu Plaza
2 Wing Yip Street, Kwun Tong
Kowloon, Hong Kong
Telephone: +852 2176 3333
Facsimile: +852 2176 3888

For global contact, visit:

www.powerconversion.com

technicalsupport@powerconversion.com

While every precaution has been taken to ensure accuracy and completeness in this literature, Emerson Network Power assumes no responsibility, and disclaims all liability for damages resulting from use of this information or for any errors or omissions.

Emerson Network Power.

The global leader in enabling
business-critical continuity.

- AC Power
- Connectivity
- DC Power
- **Embedded Power**
- Inbound Power
- Integrated Cabinet Solutions
- Outside Plant
- Precision Cooling
- Site Monitoring and Services

EmersonNetworkPower.com

Emerson Network Power and the Emerson Network Power logo are trademarks and service marks of Emerson Electric Co.
©2007 Emerson Electric Co.