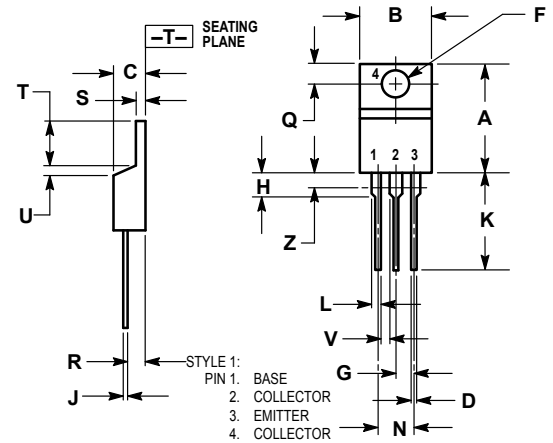
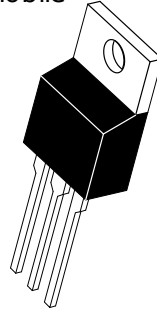


DESCRIPTION

Designed for RF power amplifier on HF band mobile radio applications.

FEATURES

- Specified 12V, 27MHz Characteristics
- $P_o = 18.5W$
- $G_p = 10.5 \text{ dB min. at } 18.5 \text{ W/27 MHz}$
- Emitter ballasted construction



DIMENSIONS

UNIT	A	B	C	D	F	G	H	J	K	L	N	Q	R	S	T	U	V	Z
mm	15.75	10.28	4.82	0.88	3.73	2.66	3.93	0.64	14.27	1.52	5.33	3.04	2.79	1.39	6.47	1.27	--	2.04
inches	0.620	0.405	0.19	0.035	0.147	0.105	0.155	0.025	0.562	0.060	0.210	0.12	0.11	0.055	0.255	0.05	--	0.08
	0.570	0.380	0.16	0.025	0.142	0.095	0.110	0.018	0.500	0.045	0.190	0.10	0.08	0.045	0.235	0.00	0.045	--

MAXIMUM RATINGS

CHARACTERISTICS	SYMBOL	RATINGS	UNITS
Collector-Base Voltage	V_{CBO}	60	V
Collector-Emitter Voltage	V_{CES}	60	V
Collector-Emitter Voltage	V_{CEO}	20	V
Collector Current	I_C	6	A
Emitter-Base Voltage	V_{EBO}	5	V
Collector Power Dissipation	P_{DISS}	25	W
Junction Temperature	T_J	-65 to 175	°C
Storage Temperature Range	T_{STG}	-65 to 175	°C

ELECTRICAL CHARACTERISTICS

CHARACTERISTICS	SYMBOL	TEST CONDITIONS	MIN.	TYP.	MAX.	UNITS
Collector-Emitter Breakdown Voltage	$V_{(BR)CEO}$	$I_C=10mA, I_B=0$	20	-	-	V
Collector-Emitter Breakdown Voltage	$V_{(BR)CES}$	$I_C=1mA, V_{EB}=0$	60	-	-	V
Emitter-Base Breakdown Voltage	$V_{(BR)EBO}$	$I_E=5mA, I_C=0$	5	-	-	V
Collector Cutoff Current	I_{CBO}	$V_{CB} = 30V, I_E = 0$			500	uA
DC Current Gain	h_{FE}	$V_{CE}=12V, I_C=100mA$	20	50	180	
Power Gain	G_p	$V_{CC}=12V, P_{OUT}=18.5W,$	10.5	-	-	dB
Collector Efficiency	η_C	$f=27MHz, P_{IN}=1.5W$	60	70	-	%

Note : Above parameters , ratings , limits and conditions are subject to change.