

SMD Power Inductor C2DEP1010



Halogen Free



Description

- Ferrite core 2 in 1 construction.
- Magnetically shielded.
- L × W × H: 13.3 × 11.0 × 10.2 mm Max.
- Product weight: 5.2g(Ref.)
- Moisture Sensitivity Level: 1
- RoHS compliance.
- Halogen Free available.

Environmental Data

- Operating temperature range: -40°C ~ +105°C (including coil's self temperature rise)
- Storage temperature range: -40°C ~ +105°C
- Solder reflow temperature: 260 °C peak.

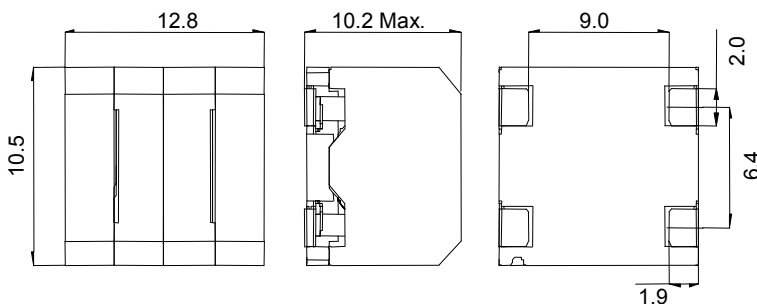
Packaging

- Carrier tape and reel packaging
- 13.0" diameter reel
- 250pcs per reel

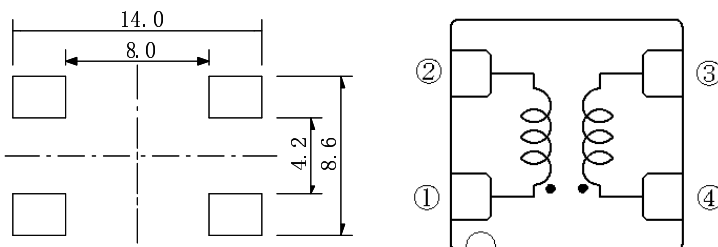
Applications

- Ideally used in LPF of digital amplifiers.

Dimension - [mm]



Land pattern and Schematics - [mm]



Electrical Characteristics

Part Name	Stamp	Inductance(μH) (1-2);(4-3) ※1	D.C.R. (mΩ) [MAX.](at 20°C) (1-2);(4-3) ※2	Saturation Current (A) (at 20°C) ※3	Temperature rise Current (A) ※4
C2DEP1010NP-100MC-120	100	10 μH±20%	14.0 (11.0)	6.2(7.3)	6.6(7.6)
C2DEP1010NP-120MC-120	120	12 μH±20%	18.0 (15.0)	6.0(7.0)	5.7(6.5)
C2DEP1010NP-150MC-120	150	15 μH±20%	20.0 (16.0)	5.4(6.1)	5.4(6.2)
C2DEP1010NP-180MC-120	180	18 μH±20%	25.0 (21.0)	4.8(5.8)	5.0(5.6)
C2DEP1010NP-220MC-120	220	22 μH±20%	27.0 (22.0)	4.3(5.1)	4.9(5.5)

※1 Inductance tested at 100kHz.

※2 () are typical Value.

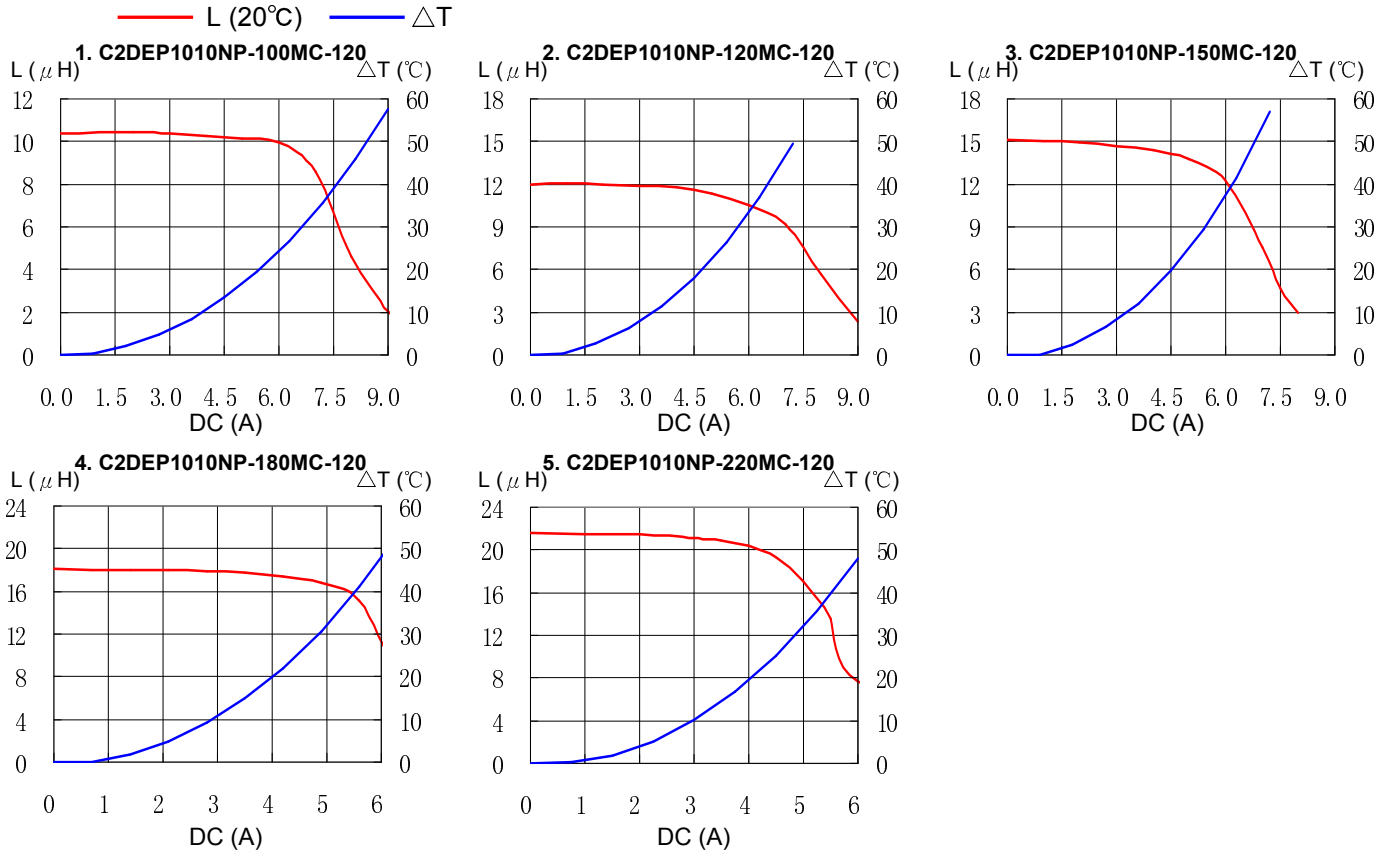
※3 This indicates the value of current when the inductance decreases to 75% of the nominal value.

※4 Temperature rise current: the value of DC current when the temperature rise is ΔT=40°C(Ta=20°C).

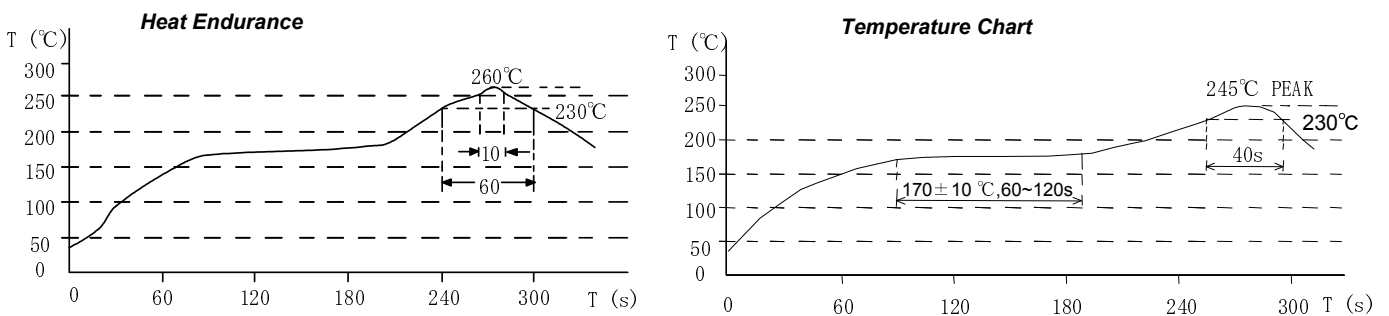
SMD Power Inductor C2DEP1010



Saturation Current & Temperature Rise Graph



Solder Reflow Condition



Please refer to the sales offices on our website - <http://www.sumida.com>

Hong Kong
Tel.+852-2880-6781
FAX.+852-2565-9600
sales@hk.sumida.com

Saitama(Japan)
Tel.+81-48-691-7300
FAX.+81-48-691-7340
sales@jp.sumida.com

Chicago
Tel.+1-847-545-6700
FAX. +1-847-545-6720
sales@us.sumida.com

Shanghai
Tel.+86-21-5836-3299
FAX.+86-21-5836-3266
shanghai.sales@cn.sumida.com

Seoul
Tel.+82-2-6237-0777
FAX.+82-2-6237-0778
sales@kr.sumida.com

Oberzell
Tel.+49-8591-937-0
FAX. +49-8591-937-103
contact@eu.sumida.com

Shenzhen
Tel.+86-755-8291-0228
FAX.+86-755-8291-0338
shenzhen.sales@cn.sumida.com

Singapore
Tel.+65-6296-3388
FAX.+65-6841-4426
sales@sg.sumida.com

Neumarkt
Tel.+49-9181-4509-110
FAX. +49-9181-4509-310
infocomp@eu.sumida.com

Taipei
Tel.+886-2-8751-2737
FAX.+886-2-8751-2738
sales@tw.sumida.com

San Jose
Tel.+1-408-321-9660
FAX.+1-408-321-9308
sales@us.sumida.com