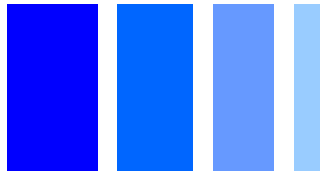
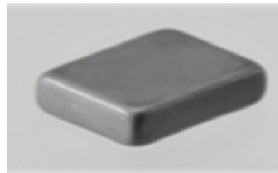


SMD Power Inductor C322512/DS



Under Development



Description

- Multilayer power inductor.
- Magnetically shielded.
- L × W × H: 3.35 × 2.65 × 1.2 mm Max.
- Product weight: 50mg (Ref.)
- Moisture Sensitivity Level: 1
- RoHS compliance.
- Halogen Free available.

Environmental Data

- Operating temperature range: -30°C~+105°C (including coil's self temperature rise)
- Storage temperature range: -30°C~+105°C
- Solder reflow temperature: 260 °C peak.

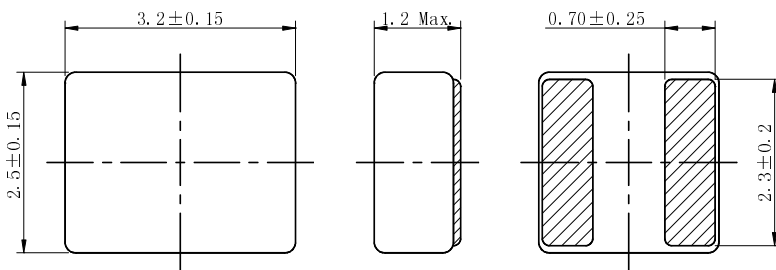
Packaging

- Carrier tape and reel packaging.

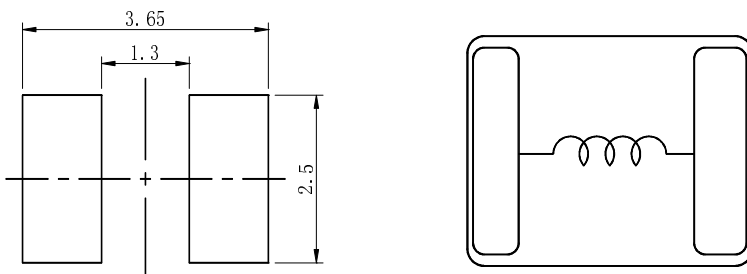
Applications

- Ideally used in DC/DC converters for Smart phones, Cell phones, other portable instruments HDD, and SSD.

Dimension - [mm]



Land pattern and Schematics - [mm]



Electrical Characteristics

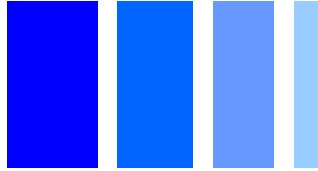
Part No.	L(μH) ±20% ※1	D.C.R. (mΩ) ±25%	Saturation current (mA) ※2	Temperature rise Current (mA)※3
C322512HPB-R47	0.47	32	3000	3000
C322512HPB-1R0	1.0	50	2500	2300
C322512HPB-2R2	2.2	100	2200	1800

※1. Inductance measuring condition: at 3MHz.

※2. Saturation current: The value of D.C. current when the inductance decreases to 70% of it's nominal value.

※3. Temperature rise current: The value of D.C. current when the temperature rise is Δt=40°C(Ta=25°C).

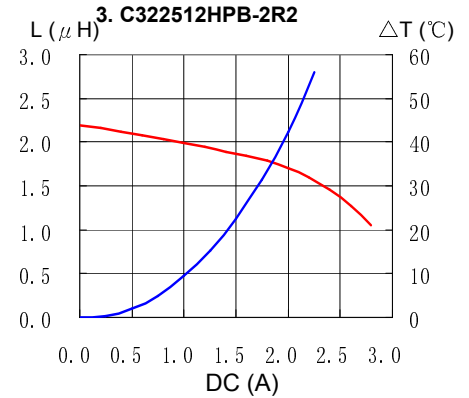
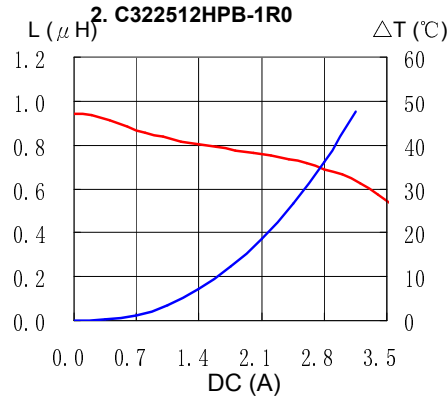
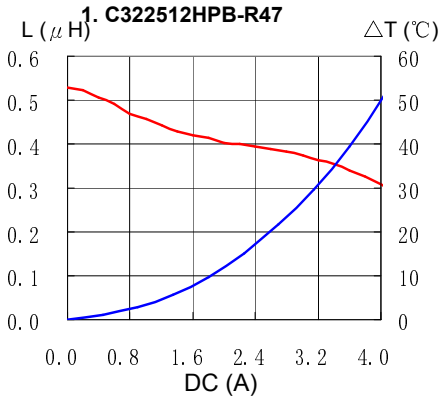
SMD Power Inductor C322512/DS



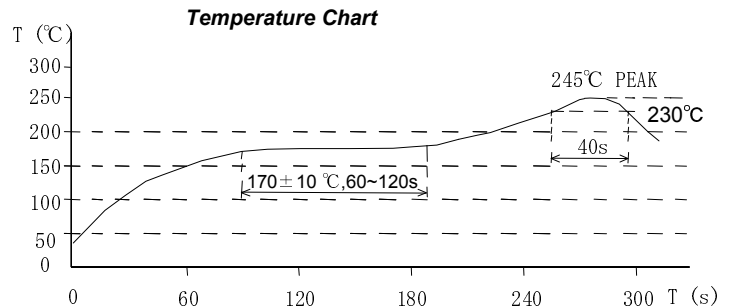
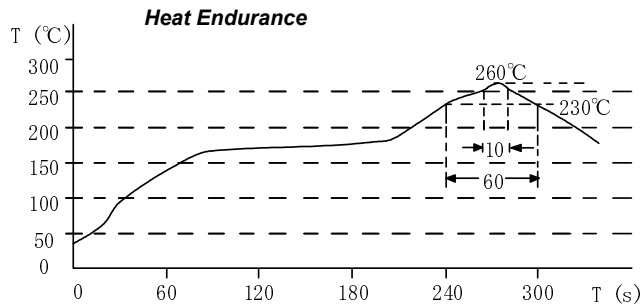
Under Development

Saturation Current & Temperature Rise Graph

— L (20°C) — ΔT



Solder Reflow Condition



Please refer to the sales offices on our website - <http://www.sumida.com>

Hong Kong
Tel.+852-2880-6688
FAX.+852-2565-9600
sales@hk.sumida.com

Tokyo
Tel.+81-3-5202-7112
FAX.+81-3-5202-7105
sales@jp.sumida.com

Chicago
Tel.+1-847-545-6700
FAX. +1-847-545-6720
sales@us.sumida.com

Shanghai
Tel.+86-021-5836-3299
FAX.+86-021-5836-3266
shanghai.sales@cn.sumida.com

Seoul
Tel.+82-2-6237-0777
FAX.+82-2-6237-0778
sales@kr.sumida.com

Oberzell
Tel.+49-8591-937-0
FAX. +49-8591-937-103
contact@sumida-eu.com

Shenzhen
Tel.+86-755-8291-0228
FAX.+86-755-8291-0338
shenzhen.sales@cn.sumida.com

Singapore
Tel.+65-6296-3388
FAX.+65-6296-3390
sales@sg.sumida.com

Neumarkt
Tel.+49-9181-4509-110
FAX. +49-9181-4509-310
infocomp@eu.sumida.com

Taipei
Tel.+886-2-8751-2737
FAX.+886-2-8751-2738
sales@tw.sumida.com

San Jose
Tel.+1-408-321-9660
FAX.+1-408-321-9308
sales@us.sumida.com