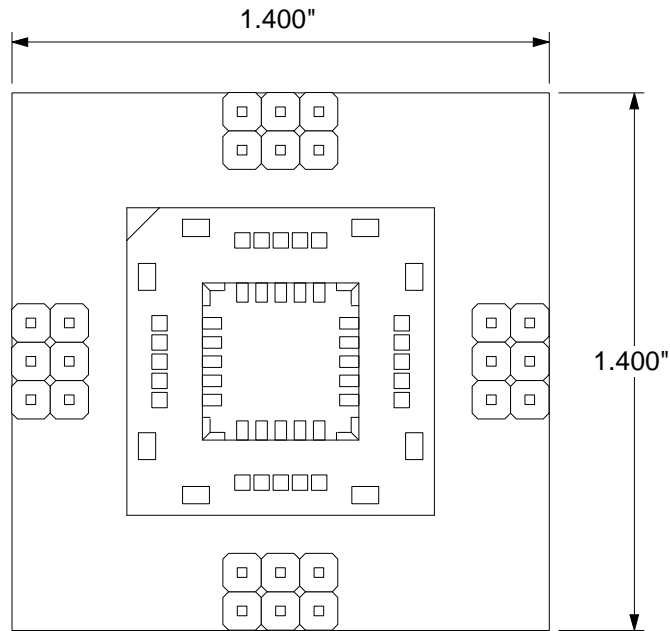
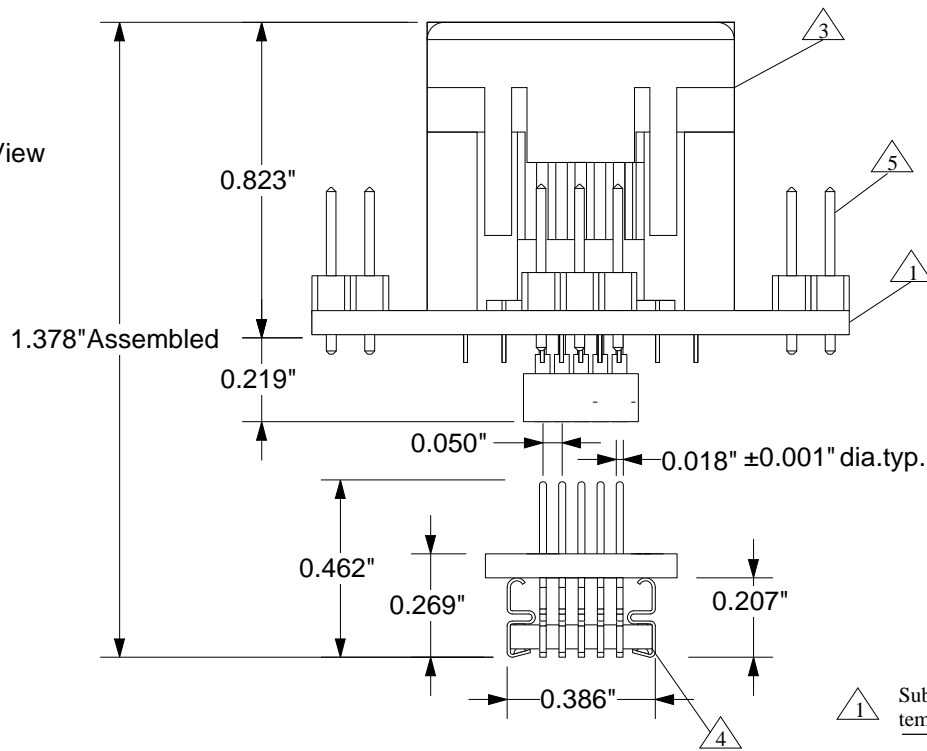


Top View




Side View



- 1 Substrate: 0.0625"±0.007" FR4/G10 or equivalent high temp material. 1/2 oz. Cu clad. SnPb plating
- 4 Leads: material- BeCu Alloy 194; plating- 60/40 SnPb (150-400µ")
- 5 Test points: material- Phosphor Bronze; plating- Sn over 50µ" Ni. Gold flash on contact end.
- 3 Socket Contacts: Material- Phosphor Bronze, finish: 150µ" 93/7 SN/PB over 40µ" Ni.

Description: Carrier adaptor;
2 piece pluggable adaptor, PLCC ZIF socket with test probes to male PLCC plug.

All tolerances: ±0.005" (unless stated otherwise). Materials and specifications are subject to change without notice.

CA-PLCC020-Z-P-T-01 DRAWING		Status: Released	Scale: 2:1	Rev: D
 <p>© 1994 IRONWOOD ELECTRONICS, INC. PO BOX 21151 ST. PAUL, MN 55121 Tele: (651) 452-8100 www.ironwoodelectronics.com</p>	Drawing: M. Lund		Date: 8/18/94	
	File: CA-PLCC020-Z-P-T-01		Modified: 12/22/99 www.DataSheet4U.com	