

Component General, Inc.

■ Stripline Base Mounted Terminations

■ MECHANICAL SPECIFICATIONS



Heat Sink : Copper, Nickel Plated per QQ-N-290.

Substrate : Beryllium Oxide Ceramic.

Contact : Beryllium Copper, Gold Plated per MIL-G-45204.

Thickness : .004" \pm .002".

Cover : Alumina Ceramic.

Tolerance : \pm .010" unless specified

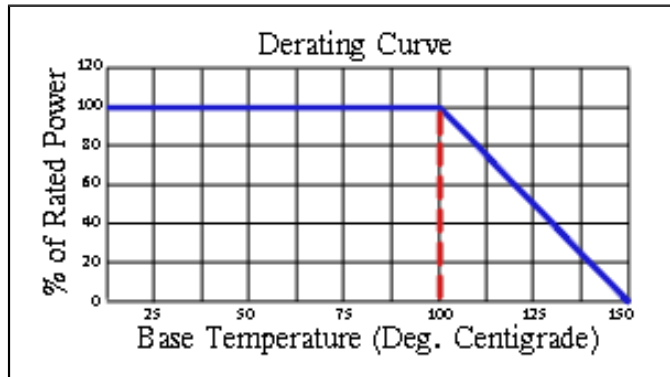
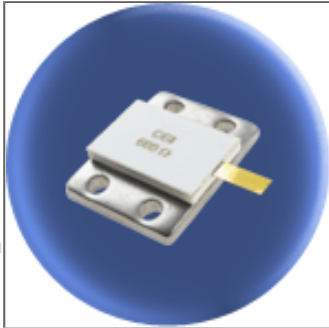
4 hole base mounted terminations product selection chart

CGI P/N	Power	Resistance (Ohms)	Standard Tolerance	Frequency Range	VSWR (Max.)
Note: Click a part number from the list below to see a data sheet for that part.					
CBT-250-3	250 W	10 - 1000	5 %	DC - .1 GHz .1 - .5 GHz .5 - 1.0 GHz	1:05:1 1.10:1 1.20:1
CBT-700	700 W	10 - 1000	5 %	DC - .5 GHz .5 - .65 GHz .65 - .89 GHz	1:15:1 1.25:1 1.50:1
CBT-800	800 W	10 - 1000	5 %	DC - .2 GHz .2 - .5 GHz	1:25:1 1.50:1

Component General, Inc.

P/N: CBT-250-3

Stripline Base Mounted Terminations



Mechanical Specifications

Covers:

Alumina Ceramic.

Substrate:

Beryllium Oxide Ceramic.

Contact:

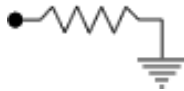
Beryllium Copper, Gold Plated per MIL-G-45204.
Length: 0.300" Min., Width: 0.120",
Thickness 0.004" ± 0.002".

Heat Sink:

Copper, Nickel Plated per QQ-N-290.

Tolerance:

± 0.010" unless specified.



Note: The use of thermal mounting compound is recommended.

Electrical Specifications

Resistance Value:

10 - 1000 Ω or as required. Other values available upon request.

Frequency Range:

DC - .1 GHz
.1 - .5 GHz
.5 - 1.0 GHz

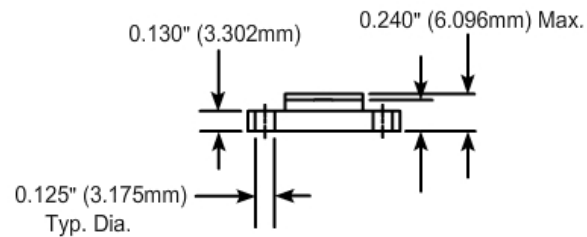
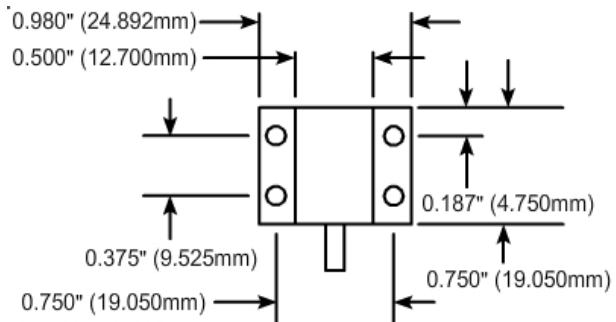
VSWR (Max.):

1.05:1
1.10:1
1.20:1

Standard Resistance Tolerance:

± 5% Other tolerances available upon request.

Part Dimensions

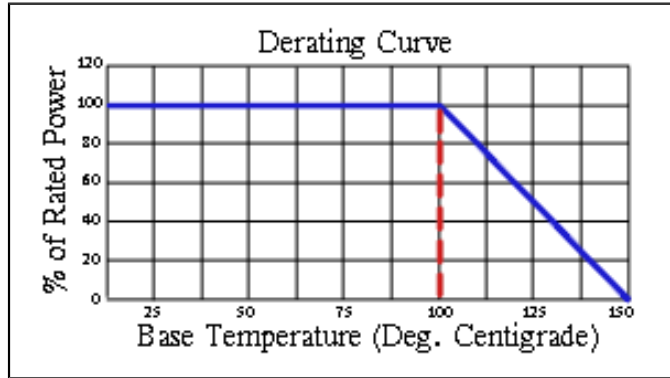
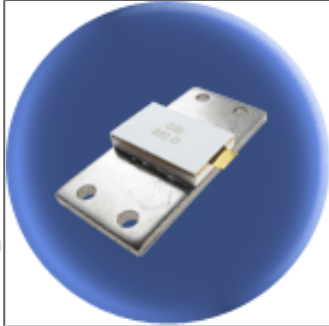


Note: The use of thermal mounting compound is recommended.

Component General, Inc.

P/N: CBT-700

Stripline Base Mounted Terminations



Mechanical Specifications

Covers:

Alumina Ceramic.

Substrate:

Beryllium Oxide Ceramic.

Contact:

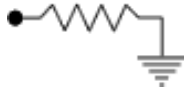
Beryllium Copper, Gold Plated per MIL-G-45204.
Length: 0.125" Min., Width: 0.250",
Thickness 0.004" ± 0.002".

Heat Sink:

Copper, Nickel Plated per QQ-N-290.

Tolerance:

± 0.010" unless specified.



Note: The use of thermal mounting compound is recommended.

Electrical Specifications

Resistance Value:

10 - 1000 Ω or as required. Other values available upon request.

Frequency Range:

DC - .5 GHz
.5 - .65 GHz
.65 - .89 GHz

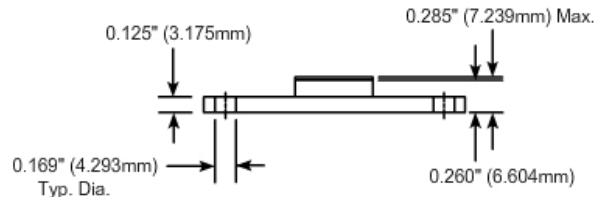
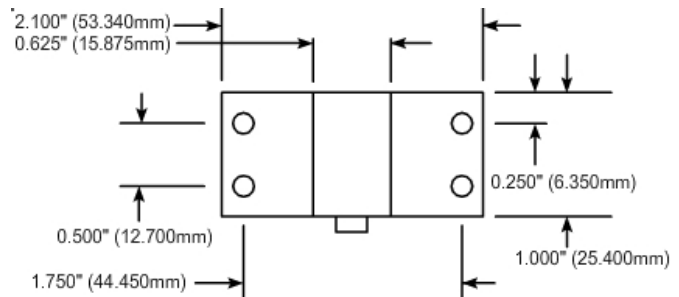
VSWR (Max.):

1.15:1
1.25:1
1.50:1

Standard Resistance Tolerance:

± 5% Other tolerances available upon request.

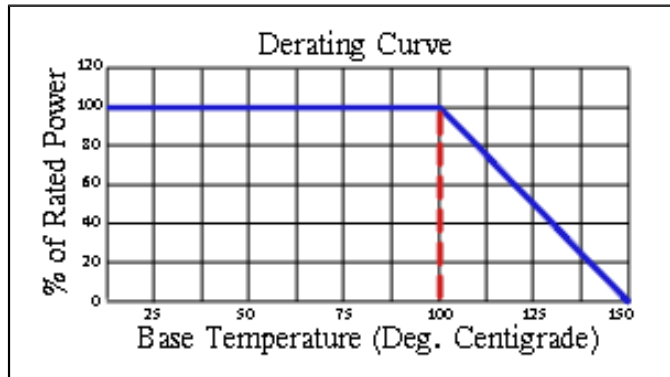
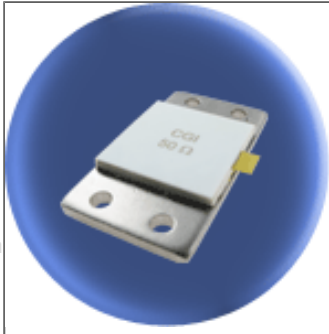
Part Dimensions



Component General, Inc.

P/N: CBT-800

Stripline Base Mounted Terminations



Mechanical Specifications

Covers:

Alumina Ceramic.

Substrate:

Beryllium Oxide Ceramic.

Contact:

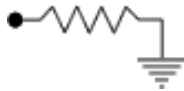
Beryllium Copper, Gold Plated per MIL-G-45204.
Length: 0.125" Min., Width: 0.250",
Thickness 0.004" ± 0.002".

Heat Sink:

Copper, Nickel Plated per QQ-N-290.

Tolerance:

± 0.010" unless specified.



Note: The use of thermal mounting compound is recommended.

Electrical Specifications

Resistance Value:

10 - 1000 Ω or as required. Other values available upon request.

Frequency Range:

DC - .2 GHz
.2 - .5 GHz

VSWR (Max.):

1.25:1
1.50:1

Standard Resistance Tolerance:

± 5% Other tolerances available upon request.

Part Dimensions

