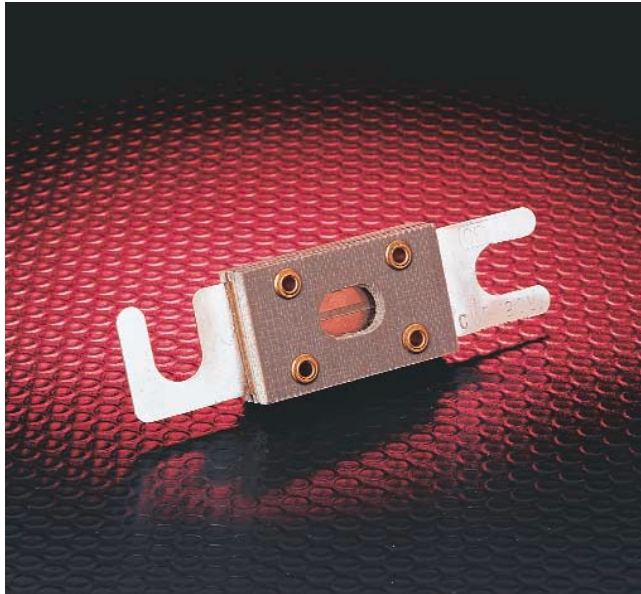


# Fork-Lift and Stud-Mounted Fuses

32 – 130 Volts DC ■ Fast-Acting and Time-Delay



## CNL/CNN Limiter Fuses

CNL fast-acting and CNN very fast-acting fuses are recommended for use on battery-operated lift-trucks and other low voltage battery-operated equipment.

### SPECIFICATIONS

**Voltage Ratings:** CNL: 32 Volts DC  
CNN: 48 Volts DC, 75 Volts AC

**Interrupting Rating:** 2,500 amperes

**Ampere Range:** 10 – 800 amperes

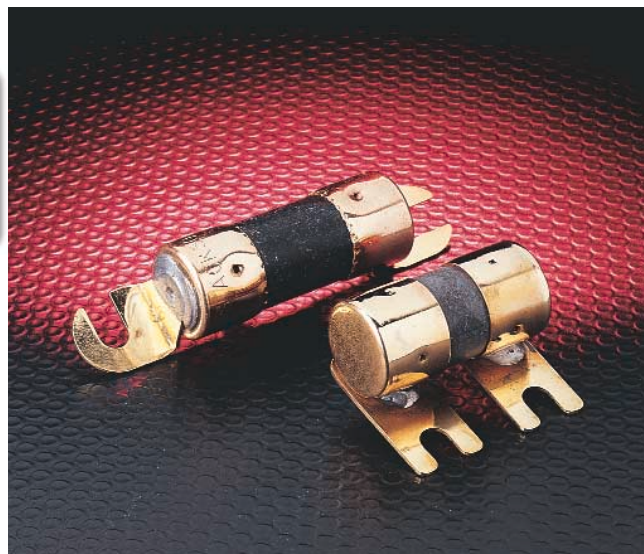
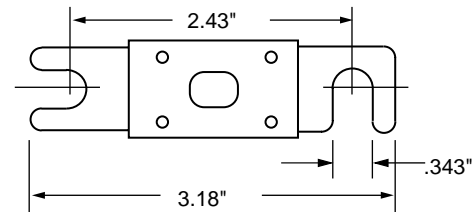
**Recommended Fuse Block:** LFFB001

### AMPERE RATINGS

CNL	35	80	150	250	350
	40	100	175	275	400
	50	125	200	300	500
	60	130	225	325	

CNN	10	80	175	300	500
	35	90	200	325	600
	40	100	225	350	700
	50	125	250	400	800
	60	150	275		

Example part number (series & amperage): CNN 700



## CBO/CCK/CCL Lift-Truck Fuses

CBO fast-acting, CCK and CCL dual-element time-delay fuses are recommended for fork-lift trucks and other similar battery-operated equipment.

PART NO.	A	B	C
CCK 1-15A	2.810	2.204	.510
CCK 20-30A	3.060	2.454	.510
CCK 35-60A	3.629		.750
CCK 70-120A	4.129	3.454	1.00
CCK 140-200A	4.362	3.579	1.00
CCK 225-300A	4.612	3.829	1.00
CCL 30-60A	3.060	2.454	.510
CCL 80-120A	3.38	2.70	.75

### SPECIFICATIONS

**Voltage Ratings:** CBO: 32 Volts DC

CCK: 130 Volts DC (1-100A)  
72 Volts DC (120-200A)  
48 Volts DC (225-300A)

CCL: 125 Volts DC

**Interrupting Rating:** CBO, CCK & CCL: 10,000A

**Ampere Range:** 1 – 300 amperes

For operating characteristics contact factory

### AMPERE RATINGS

CBO	10	25	40	70	100
Fast-Acting	12	30	50	75	125
	15	35	60	80	150
	20				

CCK	1	20	50	90	160
Time-Delay	2	25	60	100	175
	5	30	70	120	200
	10	35	75	140	225
	15	40	80	150	250
					300

CCL	30	40	60	100
Time-Delay	35	50	80	120

Example part number (series & amperage): CCK 150

