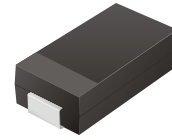


CDBA220L thru CDBA240LL

Voltage: 20V ~ 40V
Forward Current: 2.0 Amp

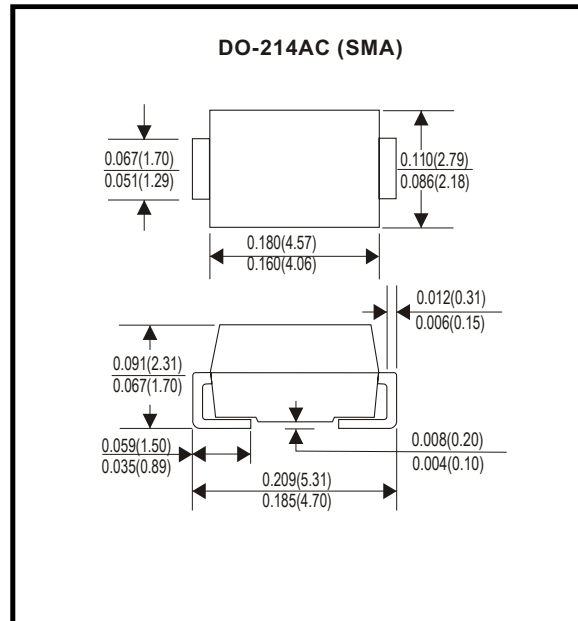


Features

- Ideal for surface mount applications
- Easy pick and place
- Built-in strain relief
- Super low forward voltage drop

Mechanical Data

Case: Molded plastic
Epoxy: UL 94-0 rate flame retardant
Metallurgically bonded construction
Polarity: Color band denotes cathode end
Mounting position: Any
Weight: 0.063g



Maxium Ratings and Electrical Characteristics

Rating 25 ambient temperature unless otherwise specified

Single phase half wave, 60Hz, resistive or include load.

For capacitive load, derate current by 20%

TYPE NUMBER	CDBA220L	CDBA220LL	CDBA240L	CDBA240LL	UNITS
Maximum Recurrent Peak Reverse Voltage	20	20	40	40	V
Maximum RMS Voltage	14	14	28	28	V
Maximum DC Blocking Voltage	20	20	40	40	V
Maximum Average Forward Rectified Current	2.0				A
Peak Forward Surge Current, 8.3 ms single half sine-wave superimposed on rated load (JEDEC method)	60				A
Maximum Instantaneous Forward Voltage at 3.0A	0.38	0.34	0.40	0.36	V
Maximum DC Reverse Current	1.0				mA
at Rated DC Blocking Voltage	40				
Operating Temperature Range T _J	-25 to +80				°C
Storage Temperature Range T _{STG}	-50 to +125				°C

CDBA220L thru CDBA240LL

RATING AND CHARACTERISTIC CURVES (CDBA220L THRU CDBA240LL)

FIG.1-TYPICAL FORWARD CURRENT DERATING CURVE

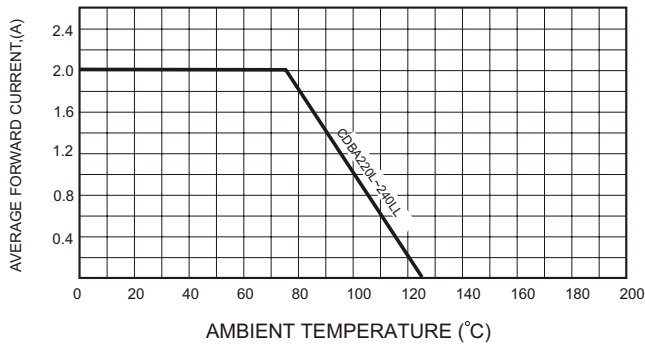


FIG.2-MAXIMUM NON-REPETITIVE FORWARD SURGE CURRENT

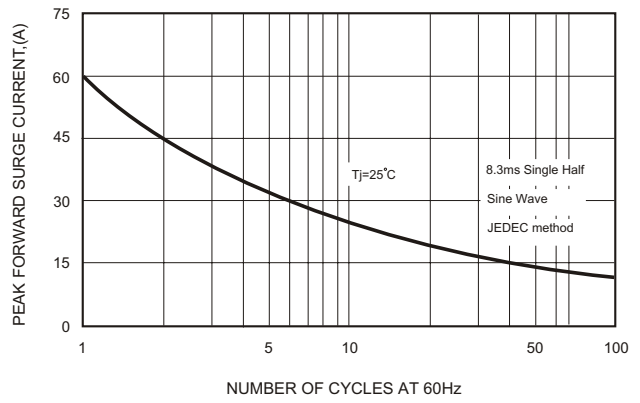


FIG.3-TYPICAL JUNCTION CAPACITANCE

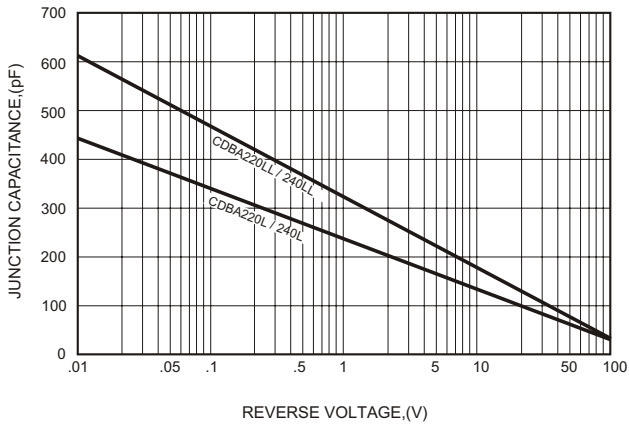
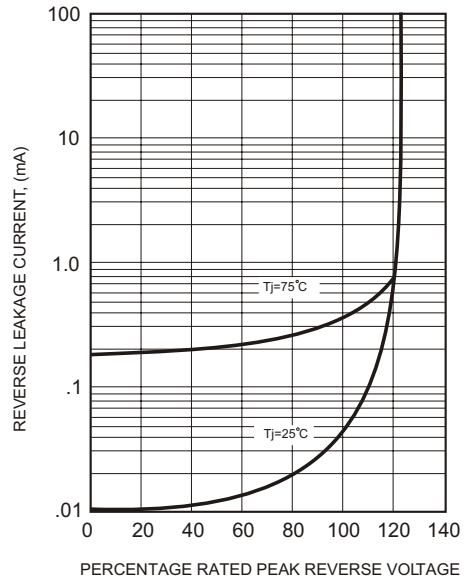


FIG.4 - TYPICAL REVERSE CHARACTERISTICS



CDBA220L thru CDBA240LL

FIG. 5 (For CDBA220L)

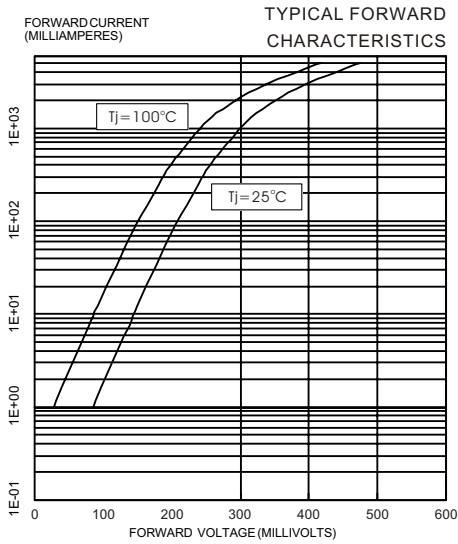


FIG. 6 (For CDBA220LL)

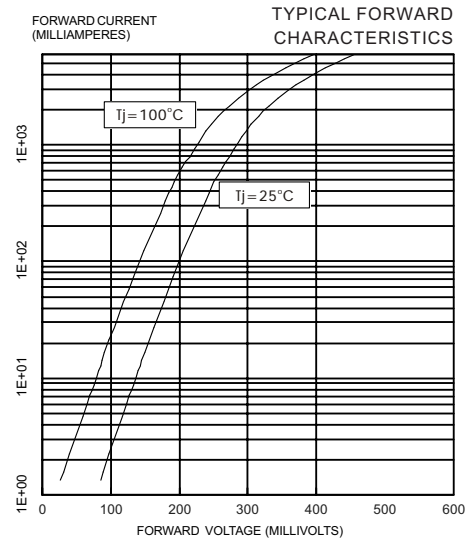


FIG. 7 (For CDBA240L)

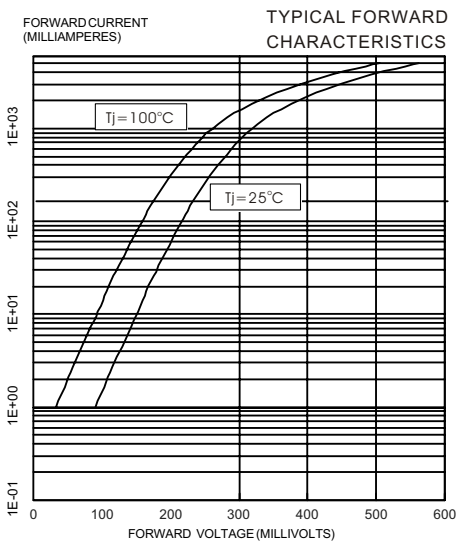


FIG. 8 (For CDBA240LL)

