

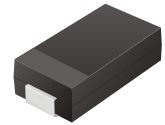
SMD Schottky Barrier Rectifiers



SMD Diodes Specialist

CDBA5817-G Thru CDBA5819-G

Reverse Voltage: 20 - 40 Volts
 Forward Current: 1A or 3 A
 RoHS Device

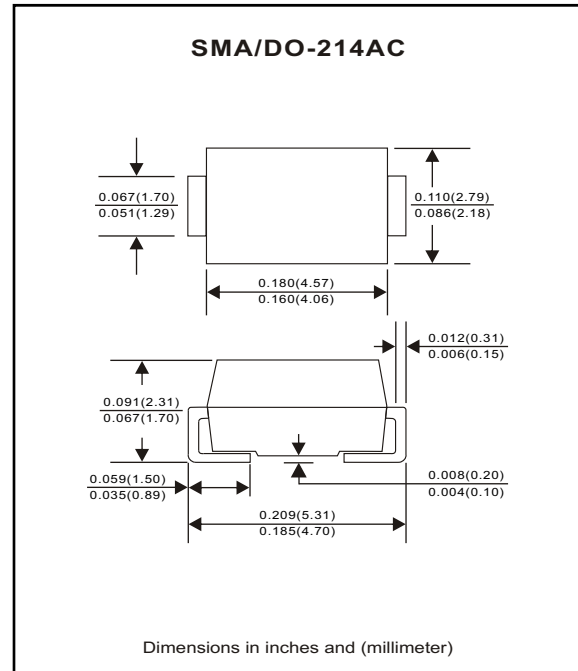


Features

- Ideal for surface mount applications.
- Easy pick and place.
- Plastic package has Underwriters Lab, flammability classification 94V-0.
- Built-in strain relief.
- Low forward voltage drop.

Mechanical data

- Case: JEDEC DO-214AC, molded plastic.
- Terminals: Solderable per MIL-STD-750, method 2026.
- Polarity: Color band denotes cathode end.
- Weight: 0.064 gram (approx.).



Maximum Ratings (at TA=25°C unless otherwise noted)

Parameter	Symbol	CDBA5817-G	CDBA5818-G	CDBA5819-G	Unit
Max. Repetitive Peak Reverse Voltage	V _{RRM}	20	30	40	V
Max. DC Blocking Voltage	V _{DC}	20	30	40	V
Max. RMS Voltage	V _{RMS}	14	21	28	V
Peak Surge Forward Current 8.3ms single half sine-wave superimposed on rated load (JEDEC method)	I _{FSM}	25			A
Max. Average Forward Current	I _O	1			A
Max. Thermal Resistance	R _{θJL}	20			°C/W
Storage Temperature	T _{STG}	+125			°C
Max. Operating Junction Temperature	T _J	-65 to +150			°C

Electrical Characteristics (at TA=25°C unless otherwise noted)

Parameter	Symbol	CDBA5817-G	CDBA5818-G	CDBA5819-G	Unit
Max. Forward Voltage at 1.0 A at 3.0 A	V _F	0.45 0.75	0.550 0.775	0.60 0.90	V
Max. DC Reverse Current at Rated DC Blocking Voltage Ta = 25°C Ta = 100°C	I _R	0.5 20			mA
Typical Junction Capacitance	C _j	65			pF

REV:A

RATING AND CHARACTERISTIC CURVES (CDBA5817-G Thru CDBA5819-G)

Fig. 1 - Forward characteristics

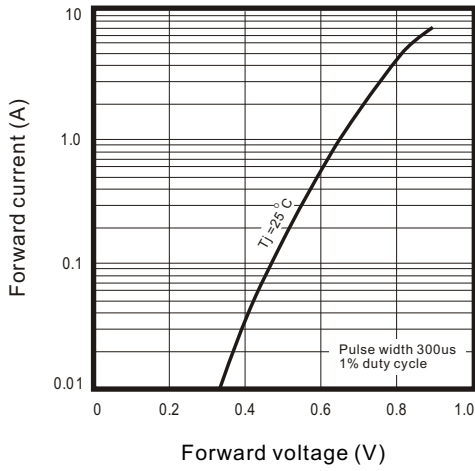


Fig. 2 - Reverse characteristics

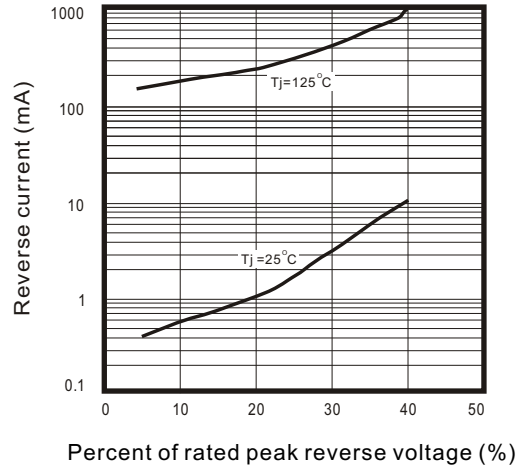


Fig.3 - Capacitance between terminals characteristics

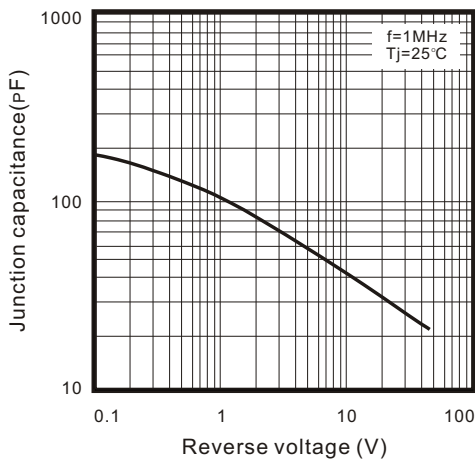


Fig.4 - Current derating curve

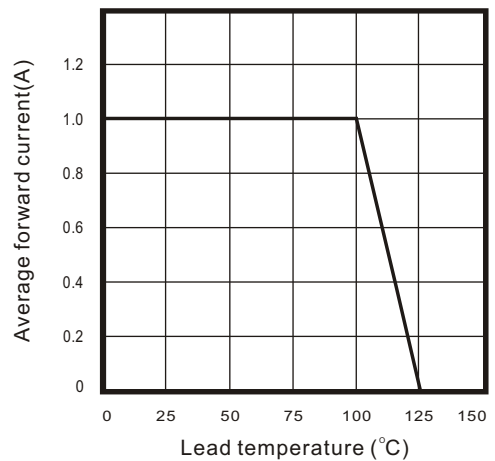


Fig.5 - Non repetitive peak forward surge current

