

SMD Power Inductor CDRH38D16R



Description

- Ferrite drum core construction.
- Magnetically shielded.
- L × W × H: 4.2 × 3.95 × 1.8 mm Max.
- Product weight: 85mg(Ref.)
- Moisture Sensitivity Level: 1
- RoHS compliance.

Environmental Data

- Operating temperature range: -40°C ~ +105°C (including coil's self temperature rise)
- Storage temperature range: -40°C ~ +105°C
- Solder reflow temperature: 260 °C peak.

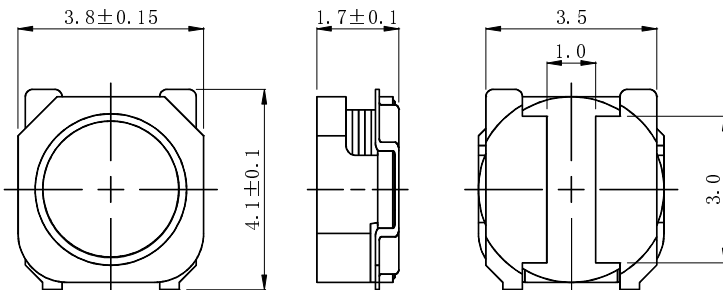
Packaging

- Carrier tape and reel packaging
- 13.0" diameter reel
- 3000 pcs per reel

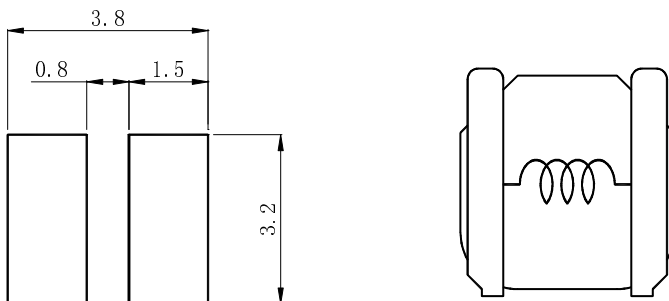
Applications

- Ideally used in Mobilephone, PDA, MP3, DSC/DVC, HDD, etc as DC-DC converter inductors .

Dimension - [mm]



Land pattern and Schematics - [mm]



SMD Power Inductor CDRH38D16R



Electrical Characteristics

Part No.	Stamp	Inductance (μ H) [Within] ※1	D.C.R. (m Ω) [Within] (at20°C)	Saturation current (A) ※2		Temperature rise Current (A) ※3
				(at20°C)	(at105°C)	
CDRH38D16RNP-R90NC	A	0.90 \pm 30%	19 \pm 25%	2.18	1.73	3.45
CDRH38D16RNP-1R6NC	B	1.6 \pm 30%	27 \pm 25%	1.65	1.39	3.05
CDRH38D16RNP-2R2NC	C	2.2 \pm 30%	30 \pm 25%	1.41	1.22	2.85
CDRH38D16RNP-3R3MC	D	3.3 \pm 20%	47 \pm 25%	1.16	0.99	2.25
CDRH38D16RNP-4R7MC	E	4.7 \pm 20%	68 \pm 25%	0.95	0.80	1.75
CDRH38D16RNP-6R8MC	F	6.8 \pm 20%	91 \pm 25%	0.81	0.69	1.50
CDRH38D16RNP-100MC	G	10 \pm 20%	127 \pm 20%	0.62	0.54	1.30
CDRH38D16RNP-150MC	H	15 \pm 20%	174 \pm 20%	0.53	0.47	1.15
CDRH38D16RNP-220MC	J	22 \pm 20%	303 \pm 20%	0.44	0.38	0.80
CDRH38D16RNP-330MC	K	33 \pm 20%	431 \pm 20%	0.35	0.31	0.68
CDRH38D16RNP-470MC	L	47 \pm 20%	788 \pm 20%	0.29	0.24	0.47
CDRH38D16RNP-680MC	M	68 \pm 20%	1007 \pm 20%	0.26	0.22	0.42
CDRH38D16RNP-101MC	N	100 \pm 20%	1521 \pm 20%	0.20	0.17	0.33

※1. Measuring condition: at 100kHz.

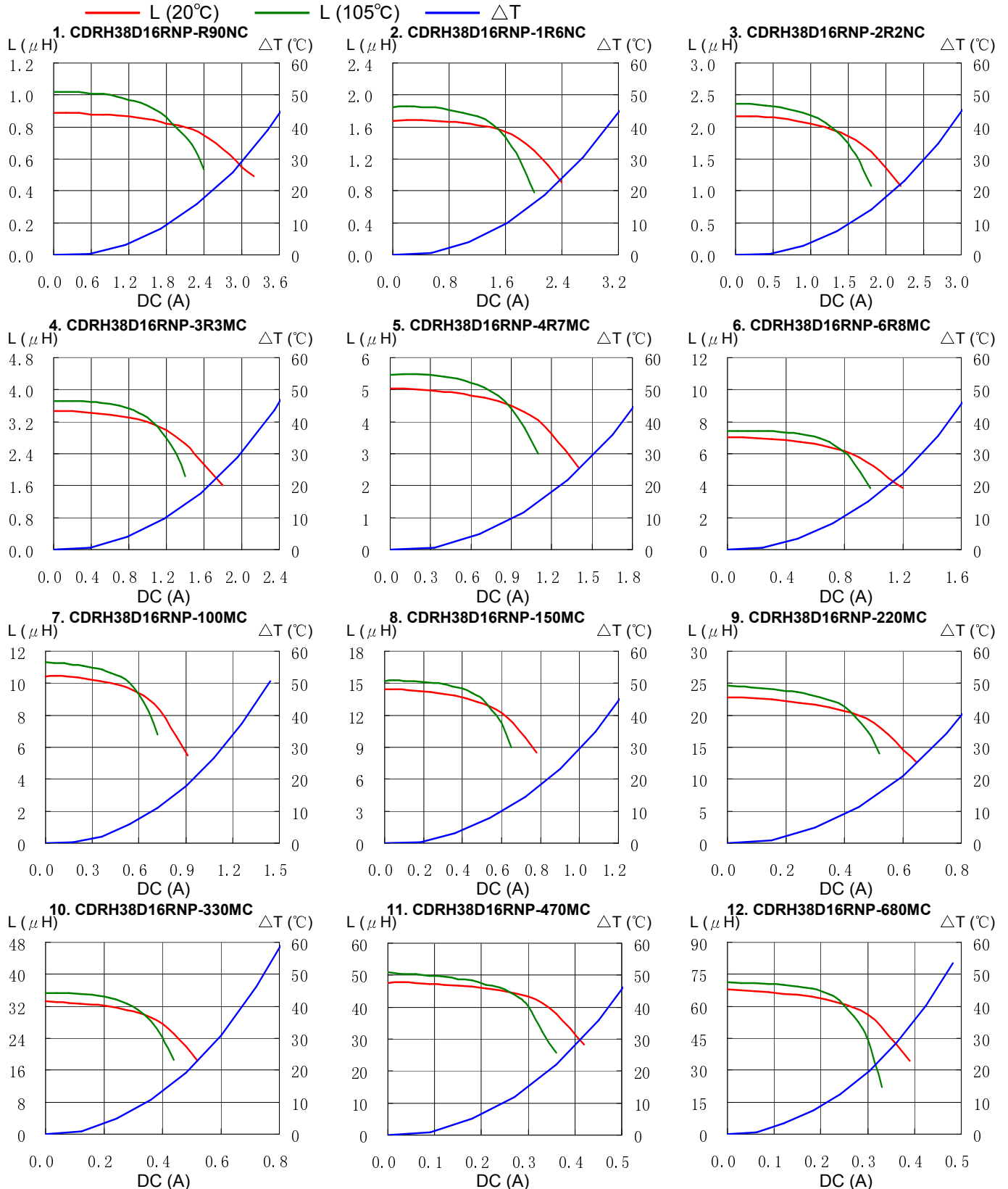
※2. Saturation current: The value of D.C. current when the inductance decreases to 70% of it's nominal value.

※3. Temperature rise current: The value of D.C. current when the temperature rise is $\Delta t = 40^\circ\text{C}$ ($T_a = 20^\circ\text{C}$).

SMD Power Inductor CDRH38D16R



Saturation Current & Temperature Rise Graph

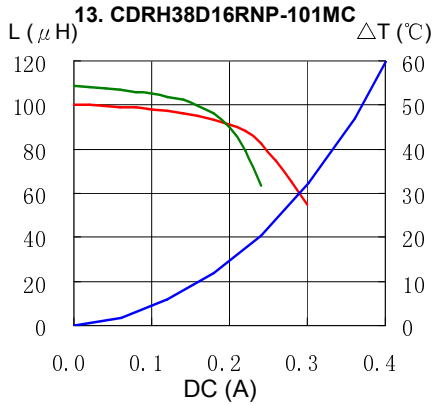


SMD Power Inductor CDRH38D16R

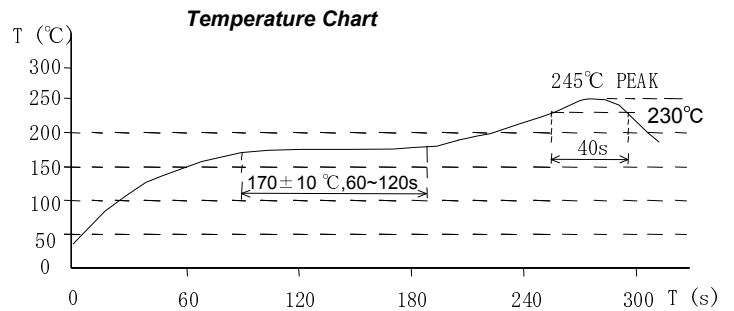
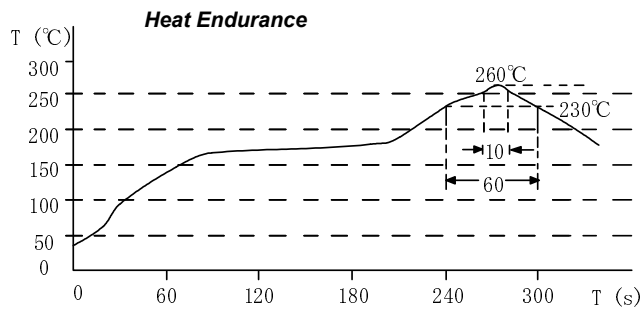


Saturation Current & Temperature Rise Graph

— L (20°C) — L (105°C) — ΔT



Solder Reflow Condition



Please refer to the sales offices on our website - <http://www.sumida.com>

Hong Kong
Tel.+852-2880-6781
FAX.+852-2565-9600
sales@hk.sumida.com

Saitama(Japan)
Tel.+81-48-691-7300
FAX.+81-48-691-7340
sales@jp.sumida.com

Chicago
Tel.+1-847-545-6700
FAX. +1-847-545-6720
sales@us.sumida.com

Shanghai
Tel.+86-21-5836-3299
FAX.+86-21-5836-3266
shanghai.sales@cn.sumida.com

Seoul
Tel.+82-2-6237-0777
FAX.+82-2-6237-0778
sales@kr.sumida.com

Oberzell
Tel.+49-8591-937-0
FAX. +49-8591-937-103
contact@eu.sumida.com

Shenzhen
Tel.+86-755-8291-0228
FAX.+86-755-8291-0338
shenzhen.sales@cn.sumida.com

Singapore
Tel.+65-6296-3388
FAX.+65-6841-4426
sales@sg.sumida.com

Neumarkt
Tel.+49-9181-4509-110
FAX. +49-9181-4509-310
infocomp@eu.sumida.com

Taipei
Tel.+886-2-8751-2737
FAX.+886-2-8751-2738
sales@tw.sumida.com

San Jose
Tel.+1-408-321-9660
FAX.+1-408-321-9308
sales@us.sumida.com