

Features

- Low Loss
- Low Ripple
- High Rejection

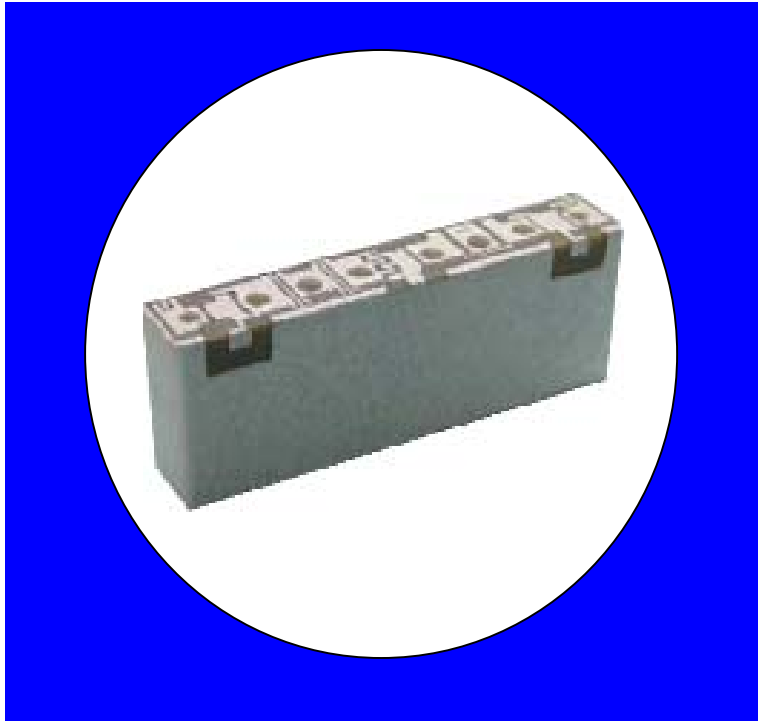
Description

Surface mount, silver (Ag) coated ceramic duplexer. Developed for use in 800 MHz subscriber and infrastructure applications.

Weight: 3.9 grams typical

Material: Filter is composed of a ceramic block plated with Ag.

Filter complies with RoHS standards.



Electrical Specifications

Parameter	Frequency (MHz)	Typical @25°C	Spec. @ 25°C	Spec. over -40°C to + 85°C
Pass band Insertion Loss	890-915	3.0 dB	3.3 dB	3.5 dB
Pass band Ripple	890-915	0.6 dB	0.9 dB	1.0 dB
Pass band Return Loss	890-915	13.0 dB	10.0 dB	10.0 dB
Rejection	935-960	53.0 dB	50.0 dB	50.0 dB
	870	30.0 dB	10.0 dB	10.0 dB
Power into any port			5.0 Watt max	

Note: Supplier shall test each filter to the critical electrical specifications of the above table. Any subsequent audits may deviate from in value due to measurement repeatability among different test systems. Such deviations shall not exceed the following limits:

Specification Allowance

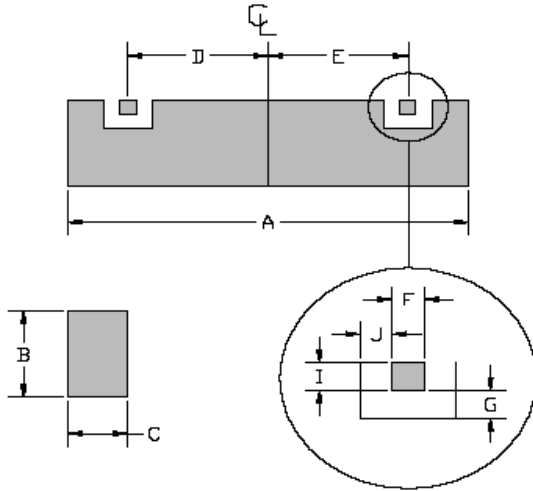
Insertion Loss	0.1 dB
Return Loss	1.0 dB
Stopbands	1.0 dB

*This product is covered by one or more of the following U.S. and foreign patents including: US 4,692,726;US 4,742,562; US 4,800,348;US 4,829,274;US 5,146,193;EP 0573597;DE 0573597;FR 0573597;JP 508149/92;KR 142171;US 5,162,760;US 5,218,329;US 5,250,916;US 5,327,109;US 5,488,335;CA 2114029;FR 9306297;GB 2273393;JP 3205337;KR 115113;CN 93106228.4;US 5,512,866;EP 0706719;DE 0706719;FR 0706719;GB 0706719;CN 95190359.4;US 5,602,518;US 5,721,520;US 5,745,018;EP 0910875;DE 0910875;DK 0910875;FR 0910875;GB 0910875;IE 0910875;JP 505182/98;KR 10-323013;US 5,994,978;US 6,462,629;CN 00810420.4;US 6,559,735;US 6,650,202;US 6,834,429. Other US and foreign patents pending.

CTS Corporation 2006 reserves all copyrights in the layout, design and configuration of the patterns on this product.

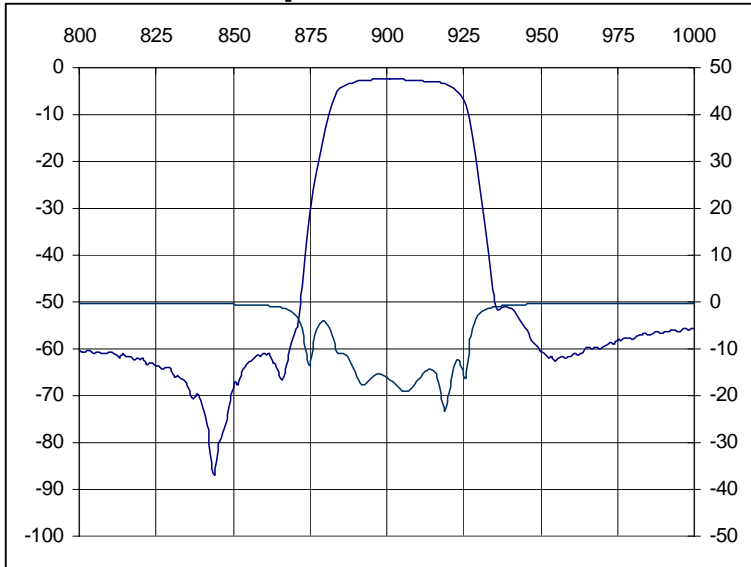
Mechanical Drawing

Rev 1 – Origin Date: August 9, 2005 – Revision Date: August 15, 2005

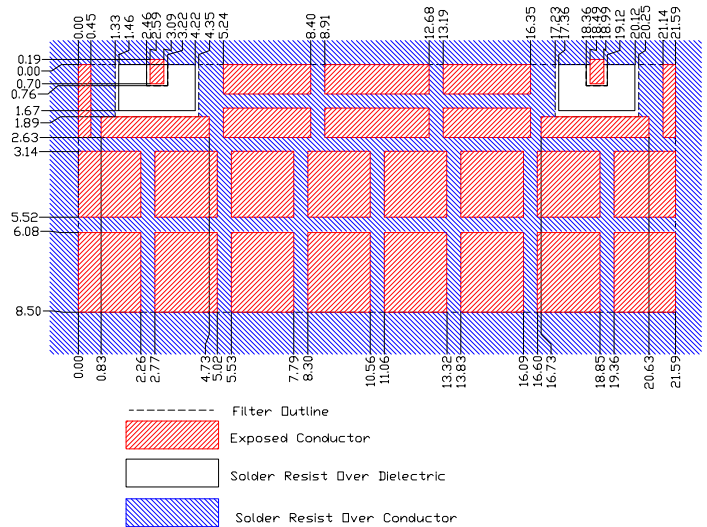


Dim	Nominal (mm)	Tolerance (mm) +/- or max
A	21.54	max
B	8.5	max
C	4.00	max
D	7.95	0.25
E	7.95	0.25
F	0.76	0.13
G	1.00	0.13
H		
I	0.76	0.13
J	1.0	0.13

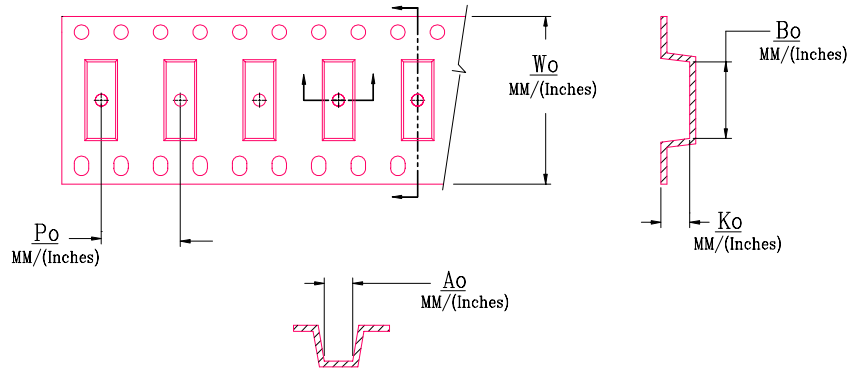
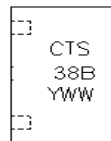
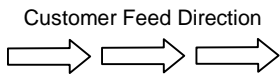
Electrical response



PCB Layout



Packaging and Marking



DIMENSION	UNITS	SPECIFICATION
REEL DIAMETER	mm	330
REEL WEIGHT	kg	2.7
REEL QUANTITY	ea.	500

MODEL NO.	W_o	A_o	B_o	K_o	P_o
CER0238	44.0/(1.732)	9.91/(0.390)	21.97/(0.865)	4.19/(0.165)	16.0/(0.630)