

Description

- Unique structure single element AM IF filter
- Center frequency range: 450 — 470kHz
- Bandwidth at 6dB: 13±3kHz

Features

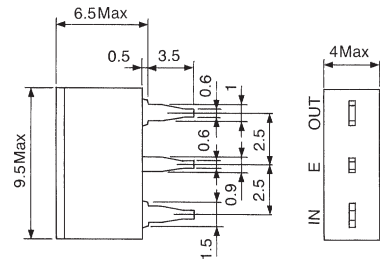
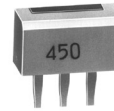
- Compact, low profile
- High selectivity, suited to a wide range of applications
- Low temperature coefficient
- Low spurious response
- Lead-free terminations

Applications

- AM radio-cassettes
- Wireless data communication equipment

Typical Characteristics

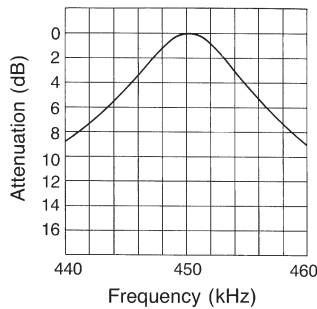
Dimensions



Unit: mm

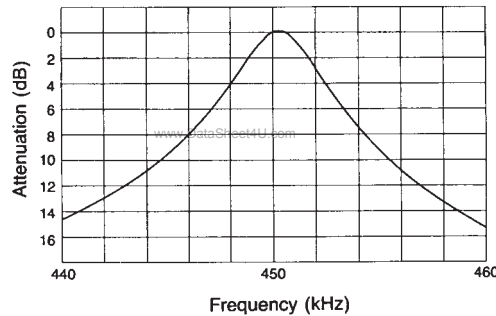
Frequency Response

ACFA-450

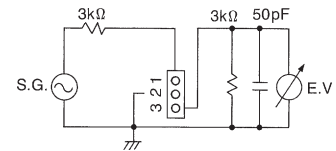


Frequency characteristics

AFCFA-450L02



Test Circuit



STANDARD FILTERS SELECTION GUIDE

TYPE CFA (CERATUNE®)

TOKO Part Number	Center Frequency (kHz)	Bandwidth at 6dB (kHz)	Selectivity at $F_o \pm 9\text{kHz}$ (dB)	Ripple in Pass Band (dB)	Insertion Loss (dB)	Input/Output Impedance (kΩ)
#ACFA-450	450±1.1	13±3.0	6.0 min.	0	5.0 max.	3.0/3.0
#BCFA-450	450±2.1	13±3.0	6.0 min.	0	5.0 max.	3.0/3.0
#ACFA-455	455±1.1	13±3.0	6.0 min.	0	5.0 max.	3.0/3.0
#BCFA-455	455±2.1	13±3.0	6.0 min.	0	5.0 max.	3.0/3.0
#ACFA-459	459±1.1	13±3.0	6.0 min.	0	5.0 max.	3.0/3.0
#BCFA-459	459±2.1	13±3.0	6.0 min.	0	5.0 max.	3.0/3.0
#ACFA-468	468±1.1	13±3.0	6.0 min.	0	5.0 max.	3.0/3.0
#BCFA-468	468±2.1	13±3.0	6.0 min.	0	5.0 max.	3.0/3.0
#AFCFA-450L02	450.2±1.1	5.0 min.	10.0 min.	0	4.0 max.	3.0/3.0
#AFCFA-455L02	455.2±1.1	5.0 min.	10.0 min.	0	4.0 max.	3.0/3.0
#AFCFA-459L02	459.2±1.1	5.0 min.	10.0 min.	0	4.0 max.	3.0/3.0



The information furnished by TOKO, Inc. is believed to be accurate and reliable. However, TOKO reserves the right to make changes or improvements in the design, specification or manufacture of its products without further notice. TOKO does not assume any liability arising from the application or use of any product or circuit described herein, nor for any infringements of patents or other rights of third parties which may result from the use of its products. No license is granted by implication or otherwise under any patent or patent rights of TOKO, Inc.