

Component General, Inc.

■ Coaxial BNC Terminations

■ MECHANICAL SPECIFICATIONS

Connector: Brass, Nickel Plated.

Insulator: PTFE, Virgin grade.

Impedance: 50 Ω .

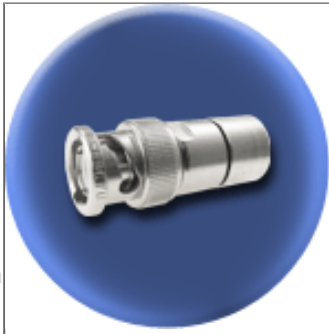
www.DataSheet4U.com

high power coaxial BNC Terminations product selection chart				
P/N	Power Avg.	Power Peak	Length	Width
CFT-2 BM	2 W	1.5 KW.	1.350"	0.600"
CFT-5 BM	5 W	2.0 KW.	1.500"	0.750"
CFT-15 BM	15 W	2.0 KW.	2.100"	1.250"
CFT-35 BM	35 W	3.0 KW.	2.200"	1.650"

Component General, Inc.

P/N:CFT-2 BM

Coaxial BNC Series



Electrical Specifications

Average Power:

2 W.

Frequency Range:

DC - 6.0 GHz

VSWR (Max.):

1.25:1

Peak Power:

1.5 KW.

Impedance:

50 Ω

Mechanical Specifications

Connector:

Brass, Nickel plated.

Contact:

Brass, Gold plated.

Housing:

Brass, Nickel plated.

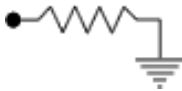
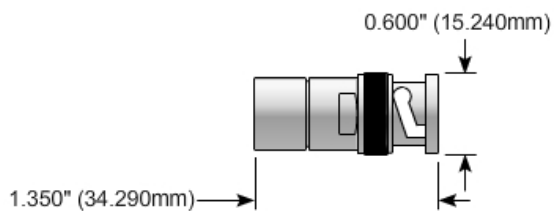
Insulator:

PTFE, Virgin grade.

Weight:

19.0 Grams.

Part Dimensions

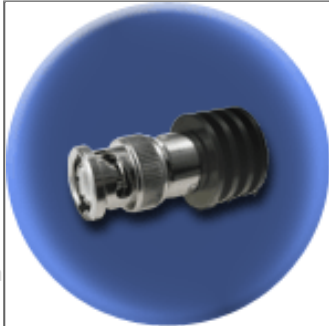


2445 Success Drive Odessa, FL 33556
727-376-6655 or 800-246-4084

Component General, Inc.

P/N:CFT-5 BM

Coaxial BNC Series



Electrical Specifications

Average Power: 5 W.	Frequency Range: DC - 6.0 GHz	VSWR (Max.): 1.30:1
Peak Power: 2.0 KW.	Impedance: 50 Ω	

Mechanical Specifications

Connector:

Brass, Nickel plated.

Contact:

Brass, Gold plated.

Housing:

Aluminum, Black Anodized.

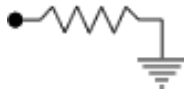
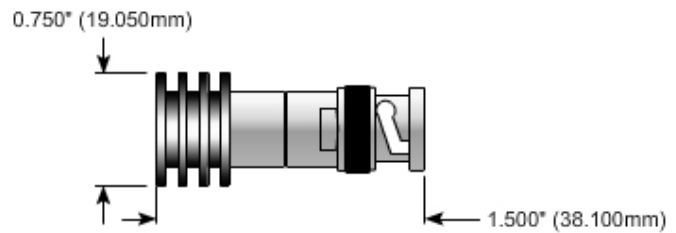
Insulator:

PTFE, Virgin grade.

Weight:

19.0 Grams.

Part Dimensions

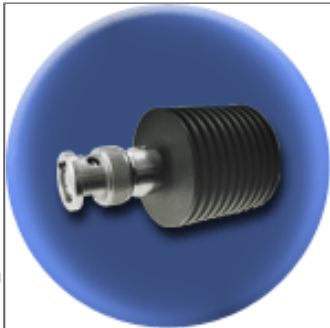


2445 Success Drive Odessa, FL 33556
727-376-6655 or 800-246-4084

Component General, Inc.

P/N:CFT-15 BM

Coaxial BNC Series



Electrical Specifications

Average Power:

15 W.

Frequency Range:

DC - 6.0 GHz

VSWR (Max.):

1.30:1

Peak Power:

2.0 KW.

Impedance:

50 Ω

Mechanical Specifications

Connector:

Brass, Nickel plated.

Contact:

Brass, Silver plated.

Housing:

Aluminum, Black Anodized.

Insulator:

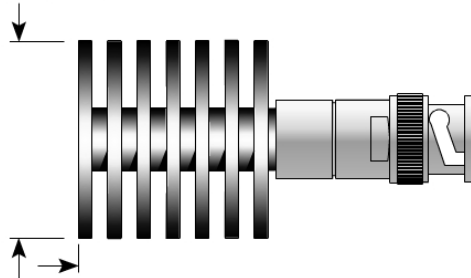
PTFE, Virgin grade.

Weight:

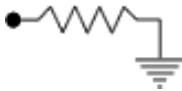
48.0 Grams.

Part Dimensions

1.250" (31.750mm)



2.100" (53.340mm)



2445 Success Drive Odessa, FL 33556
727-376-6655 or 800-246-4084

Component General, Inc.

P/N:CFT-35 BM

Coaxial BNC Series



Electrical Specifications

Average Power:

35 W.

Frequency Range: VSWR (Max.):

DC - 2.0 GHz

1.20:1

2.0 - 4.0 GHz

1.30:1

Peak Power:

3.0 KW.

Impedance:

50 Ω

Mechanical Specifications

Connector:

Brass, Nickel plated.

Contact:

Brass, Silver plated.

Housing:

Aluminum, Black Anodized.

Insulator:

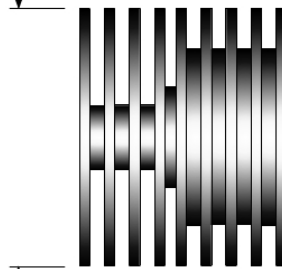
PTFE, Virgin grade.

Weight:

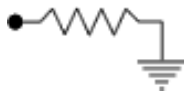
75.0 Grams.

Part Dimensions

1.650" (41.910mm)



2.200" (55.880mm)



2445 Success Drive Odessa, FL 33556
727-376-6655 or 800-246-4084