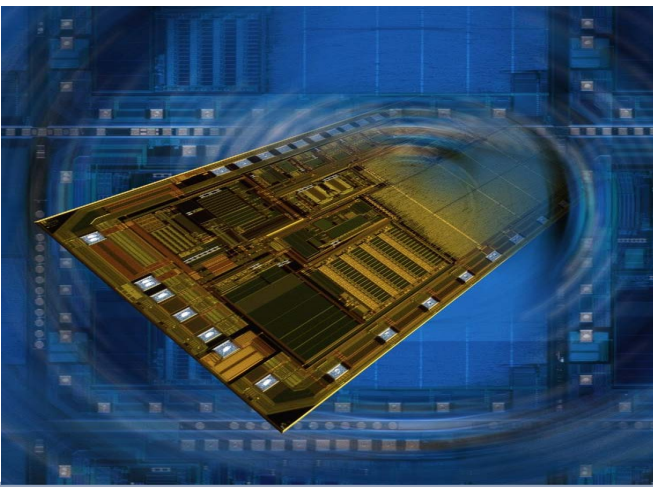


Product Information Occupancy Classification IC - CG642B



BOSCH
Invented for life



Occupancy Classification IC

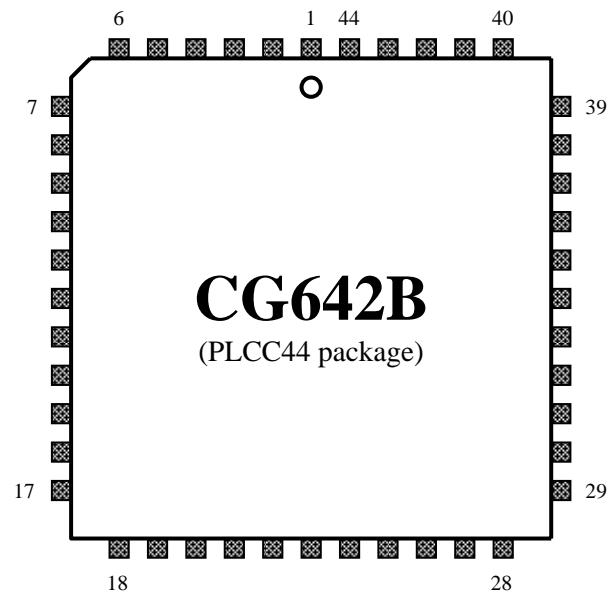
- ▶ Measurement and diagnosis IC for OC systems with seat mats
- ▶ System supply: 5V regulator with reset and power-on delay
- ▶ Window watchdog
- ▶ 23 I/Os for precise resistor measurement with low current capability
- ▶ 2 I/Os for precise resistor measurement with high current capability
- ▶ Seat matrix overvoltage detection and circuit protection
- ▶ Measurement matrix for selection of rows and columns
- ▶ 2 analog outputs for current and voltage measurement results
- ▶ ISO diagnosis interfaces for baud rates up to 50kbaud
- ▶ All functions controlled via 8 bit bi-directional SPI, 4 MHz
- ▶ PLCC44 package

Customer benefits:

- ▶ Excellent system know-how
- ▶ Smart concepts for system safety
- ▶ Secured supply
- ▶ Long-term availability of manufacturing processes and products
- ▶ QS9000 and ISO/TS16949 certified

Today, BOSCH Automotive Electronics introduces a completely new IC supporting occupant detection and classification in automobiles. This highly integrated IC enables system designers to interface between seat mats and microcontroller based system control with a single chip. The CG642B integrates 25 independent measurement channels for seat mat resistor matrix evaluation by utilizing leading-edge automotive ASIC processes. The superior performance with respect to precision and reliability of this process will be combined with a variety of features like on-chip power supply and system supervision as required by today's compatible systems.

PIN configuration



Pin description

No	Name	Description
1	C9	V-force/i-measure C9
2	C10	V-force/i-measure C10
3	C11	V-force/i-measure C11
4	C12	V-force/i-measure C12
5	COS	V-force/i-measure security column
6	ECLK	Clock input (4MHz)
7	VMS	Supply voltage v/c - sense
8	VZP	Battery supply
9	GVR	Driver output external regulator
10	RC	Internal oscillator adjust
11	VST	5.0V regulator output
12	/IRS	Impulse reset (low active)
13	WDS	Watchdog trigger
14	GND	Ground
15	/CS	Chip select (low active)
16	CHP	Charge pump capacitor
17	K	Diagnosis driver output
18	T1	V-force/i-measure T1
19	T2	V-force/i-measure T2
20	ROS	V-force/i-measure security row
21	R9	V-force/i-measure R9
22	R8	V-force/i-measure R8
23	R7	V-force/i-measure R7
24	R6	V-force/i-measure R6
25	RxD	Diagnosis receiver output
26	TxD	Diagnosis driver input
27	SCK	SPI clock
28	MOSI	Master out slave in
29	R5	V-force/i-measure R5
30	R4	V-force/i-measure R4
31	R3	V-force/i-measure R3
32	R2	V-force/i-measure R2
33	R1	V-force/i-measure R1
34	C1	V-force/i-measure C1
35	C2	V-force/i-measure C2
36	C3	V-force/i-measure C3
37	C4	V-force/i-measure C4
38	C5	V-force/i-measure C5
39	C6	V-force/i-measure C6
40	IM	Output current value
41	VM	Output voltage value
42	MISO	Master in slave out
43	C7	V-force/i-measure C7
44	C8	V-force/i-measure C8

Voltage range

www.DataSheet4U.com

The CG642B features direct battery supply ranged from 6.0V to 16.5V at pin VZP. A reverse diode for internal protection is recommended.

Reset

The reset signal is generated CG642B internally.

Pin/IRS is an open collector output driven by the internal reset signal. Reset is activated during power-on, under voltage and over voltage conditions and watchdog errors. Power-on delay takes 34ms after supply ramp-up guaranteeing stable system supply and internal timing consistency.

Measurement timing

A seat resistance measurement can be started by SPI command. All timings are controlled CG642B internally. A single seat resistance measurement takes less than 1ms allowing a sample rate of 1 KHz.

Measurement range

The CG642B features different measurement ranges for resistor measurement between 1kΩ and 500kΩ. The appropriate measurement range is selected automatically during active measurement.

Measurement precision:

Voltage measurement (pin VM) is performed with a precision of typ. 1% (max 2%), current measurement (pin IM) of typ. 5% (max. 20%, depending on the selected measurement range).

Contact

Robert Bosch GmbH
Sales Semiconductors
Postbox 13 42
72703 Reutlingen
Germany
Tel.: +49 7121 35-2979
Fax: +49 7121 35-2170

Robert Bosch Corporation
Component Sales
38000 Hills Tech Drive
Farmington Hills, MI 48331
USA
Tel.: +1 248 876-7441
Fax: +1 248 848-2818

Robert Bosch K.K.
Component Sales
9-1, Ushikubo 3-chome
Tsuzuki-ku, Yokohama 224
Japan
Tel.: +81 45 9 12-83 01
Fax: +81 45 9 12-95 73

E-Mail: bosch.semiconductors@de.bosch.com

Internet: www.bosch-semiconductors.de

© 02/2006 All rights reserved by Robert Bosch GmbH including the right to file industrial property rights

Robert Bosch GmbH retains the sole powers of distribution, such as reproduction, copying and distribution.

For any use of products outside the released application, specified environments or installation conditions no warranty shall apply and Bosch shall not be liable for such products or any damage caused by such products.