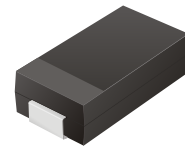


CGPA10MM

Reverse Voltage: 2000 Volts
Forward Current: 1.0 Amp

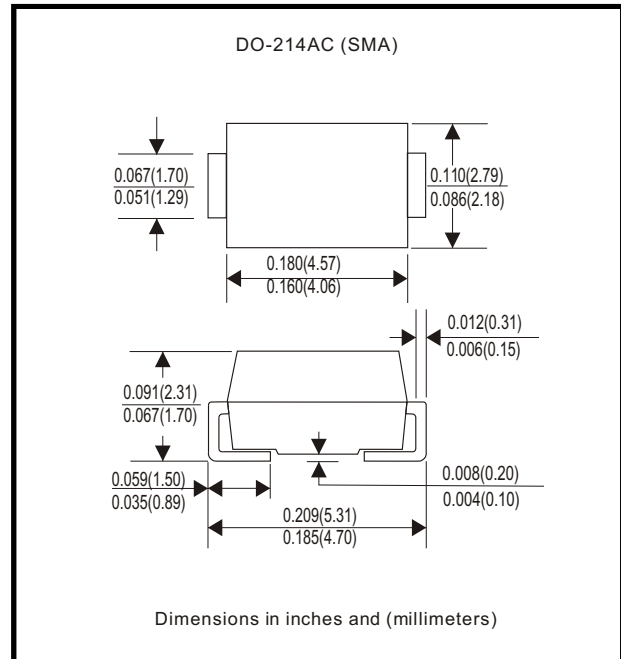


Features

- Glass passivated cavity-free junction
- Ideal for surface mount automotive application
- Plastic package has Underwriters Lab. flammability classification 94V-0
- Built-in strain relief
- High temperature soldering guaranteed: 250 degree C/10sec, at terminals

Mechanical data

Case: JEDEC DO-214AC molded plastic
Terminals: solderable per MIL-STD-750, method 2026
Polarity: Color band denotes cathode end
Weight: 0.064 gram



Maximum Ratings and Electrical Characteristics

Parameter	Symbol	CGPA10MM	Unit
Max. Repetitive Peak Reverse Voltage	V _{RRM}	2000	V
Max. DC Blocking Voltage	V _{DC}	2000	V
Max. RMS Voltage	V _{RMS}	1400	V
Peak Surge Forward Current 8.3ms single half sine-wave Sine-wave superimposed on Rate load (JEDEC)	I _{FSM}	25	A
Max. Average Forward Current	I _o	1.0	A
Max. Instantaneous Forward Current at 1.0 A	V _F	1.25	V
Max. DC Reverse Current at rated DC Blocking Voltage Ta=25°C Ta=125°C	I _R	5 50	µA
Max. Thermal Resistance (Note 1)	R _{θJA}	55	°C/W
Operating junction temperature	T _j	-55 to +175	°C
Storage temperature	T _{STG}	-55 to +175	°C

Note 1: Thermal resistance from junction to ambient.

RATING AND CHARACTERISTIC CURVES (CGPA10MM)

Fig. 1 - Reverse Characteristics

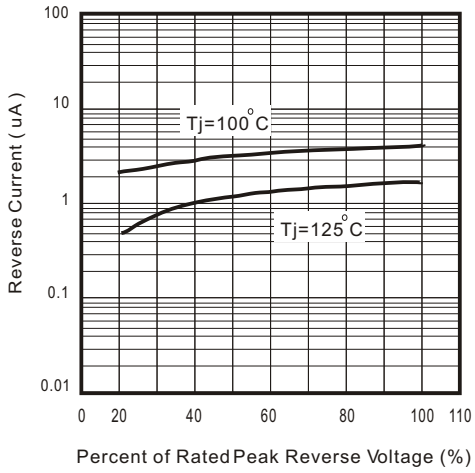


Fig.2 - Forward Characteristics

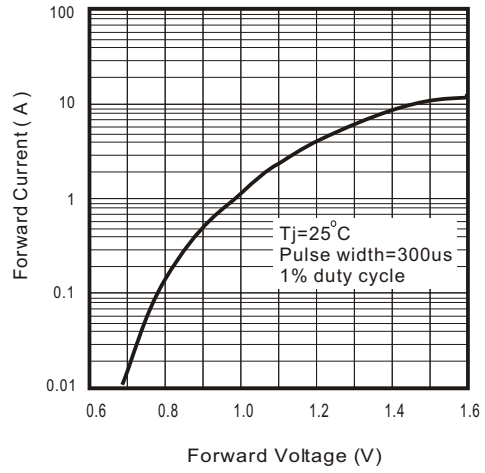


Fig. 3 - Junction Capacitance

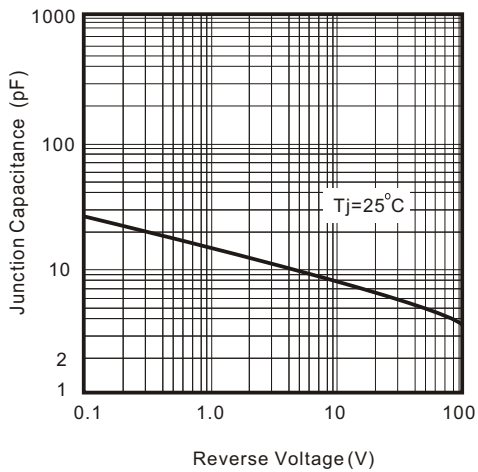


Fig. 4 - Current Derating Curve

