

CGS74CT2524

1 to 4 Minimum Skew (300 ps) Clock Driver

General Description

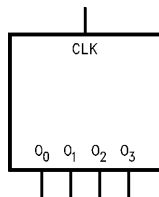
These minimum skew clock drivers are designed for Clock Generation and Support (CGS) applications operating at high frequencies. This device guarantees minimum output skew across the outputs of a given device.

Skew parameters are also provided as a means to measure duty cycle requirements as those found in high speed clocking systems. The CGS74CT2524 is a minimum skew clock driver with one input driving four outputs, specifically designed for signal generation and clock distribution applications.

Features

- Guaranteed 300 ps pin-to-pin skew (t_{OSHL} and t_{OSLH})
- Implemented on National's FACT™ family process
- 1 input to 4 outputs low skew clock distribution
- Symmetric output current drive: 24 mA I_{OH}/I_{OL}
- Industrial temperature of -40°C to $+85^{\circ}\text{C}$
- 8-pin SOIC package
- Low dynamic power consumption above 20 MHz
- Guaranteed 2 kV ESD protection

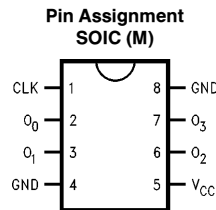
Logic Symbol



TL/F/11752-1

The output pins act as a single entity and will follow the state of the CLK when the clock distribution chip is selected.

Connection Diagrams



TL/F/11752-2

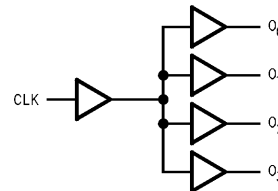
Pin Description

Pin Names	Description
CLK	Clock Input
O ₀ -O ₃	Outputs

Truth Table

Inputs	Outputs
CLK	O ₀ -O ₃
L	L
H	H

L = Low Logic Level
H = High Logic Level



TL/F/11752-3

Absolute Maximum Ratings (Note)

If Military/Aerospace specified devices are required, please contact the National Semiconductor Sales Office/Distributors for availability and specifications.

Supply Voltage (V_{CC})	-0.5 to 7.0V		
DC Input Voltage Diode Current (I_{IK})	-20 mA		
$V = -0.5V$	-20 mA		
$V = V_{CC} + 0.5V$	+20 mA		
DC Input Voltage (V_I)	-0.5V to ($V_{CC} + 0.5V$)		
DC Output Diode (Current) (I_O)	-20 mA		
$V = -0.5V$	-20 mA		
$V = V_{CC} + 0.5V$	+20 mA		
DC Output Voltage (V_O)	-0.5V to ($V_{CC} + 0.5V$)		
DC Output Source or Sink Current (I_O)	± 50 mA		
DC V_{CC} or Ground Current per Output Pin (I_{CC} or I_{GND})	± 50 mA		
Storage Temperature (T_{STG})	-65°C to +150°C		
Junction Temperature (θ_{JA})	0	225	500 LFM
	M	167	132 117°C/W
	N	115	79 62°C/W

Recommended Operating Conditions

Supply Voltage (V_{CC})	4.5V to 5.5V
Input Voltage (V_I)	0V to V_{CC}
Output Voltage (V_O)	0 to V_{CC}
Operating Temperature (T_A)	-40°C to +85°C
Input Rise and Fall Times (0.8V to 2.0V)	9.6 ns max

NOTE: The Absolute Maximum Ratings are those values beyond which the safety of the device cannot be guaranteed. The device should not be operated at these limits. The parametric values defined in the DC and AC Electrical Characteristics tables are not guaranteed at the absolute maximum ratings. The Recommended Operating Conditions will define the conditions for actual device operation.

DC Electrical Characteristics

Over recommended operating conditions unless specified otherwise.

Symbol	Parameter	V_{CC} (V)	CGS74CT2524			Units	Conditions
			$T_A = +25^\circ\text{C}$		$T_A = -40^\circ\text{C to } +85^\circ\text{C}$		
			Typ	Guaranteed Limits			
V_{IH}	Minimum High Level Input Voltage	4.5	1.5	2.0	2.0	V	$V_{OUT} = 0.1V$ or $V_{CC} = -0.1V$
		5.5	1.5	2.0	2.0		
V_{IL}	Maximum Low Level Input Voltage	4.5	1.5	0.8	0.8	V	$V_{OUT} = 0.1V$ or $V_{CC} = -0.1V$
		5.5	1.5	0.8	0.8		
V_{OH}	Minimum High Level Output Voltage	4.5	4.49	4.4	4.4	V	$V_{IN} = V_{IH}$ $I_{OUT} = -50 \mu A$
		5.5	5.49	5.4	5.4		
		4.5		3.86	3.76	V	$V_{IN} = V_{IH}$ $I_{OH} = -24 \text{ mA}$
		5.5		4.86	4.76		
V_{OL}	Minimum Low Level Output Voltage	4.5	0.001	0.1	0.1	V	$V_{IN} = V_{IL}$ $I_{OUT} = 50 \mu A$
		5.5	0.001	0.1	0.1		
		4.5		0.36	0.44	V	$V_{IN} = V_{IL}$ $I_{OL} = 24 \text{ mA}$
		5.5		0.36	0.44		
I_{IN}	Maximum Input Leakage Current	5.5		± 0.1	± 1.0	mA	$V_I = V_{CC}, \text{GND}$
I_{CC_T}	Maximum I_{CC} /Input	5.5	0.6		1.5	mA	$V_I = V_{CC} - 2.1V$
I_{OLD}	Minimum Dynamic Output Current	5.5			75	mA	$V_{OLD} = 1.65V \text{ Max}$
I_{OHD}		5.5			-75	mA	$V_{OHD} = 3.85V \text{ Min}$
I_{CC}	Maximum Quiescent Supply Current	5.5		8.0	80	μA	$V_{IN} = V_{CC}$ or GND

AC Electrical Characteristics

Over recommended operating conditions unless specified otherwise. All typical values are measured at $V_{CC} = 5V$, $T_A = 25^\circ C$.

Symbol	Parameter	CGS74CT2524			Units
		$V_{CC} = 4.5V \text{ to } 5.5V$ $T_A = -40^\circ C \text{ to } +85^\circ C$ $C_L = 50 \text{ pF}$ $R_L = 500\Omega$			
		Min	Typ	Max	
t_{PLH}	Low-to-High Propagation Delay CLK to O_n	3.5		9.0	ns
t_{PHL}	High-to-Low Propagation Delay CLK to O_n	3.5		9.0	ns

Extended AC Electrical Characteristics

Over recommended operating conditions unless specified otherwise. All typical values are measured at $V_{CC} = 5V$, $T_A = 25^\circ C$.

Symbol	Parameter	CGS74CT2524				Units
		$V_{CC} = 4.5V \text{ to } 5.5V$ $T_A = -40^\circ C \text{ to } +85^\circ C$ $C_L = 50 \text{ pF}$ $R_L = 500\Omega$				
		Package	Min	Typ	Max	
F_{max}	Maximum Operating Frequency			100		MHz
t_{OSHL}	Maximum Skew Common Edge Output-to-Output Variation (Note 1)	M M (Note 2) N			300 450 500	ps
t_{OSLH}	Maximum Skew Common Edge Output-to-Output Variation (Note 1)	M M (Note 2) N			300 450 500	ps
t_{PS}	Maximum Skew Pin (Signal) Transition Variation (Note 3)				1.0	ns
t_{rise} t_{fall}	Rise Time/Fall Time (from 0.8V to 2.0V/2.0V to 0.8V)				1.5	ns
T_{High}	Time High	4				ns
T_{Low}	Time Low	4				ns

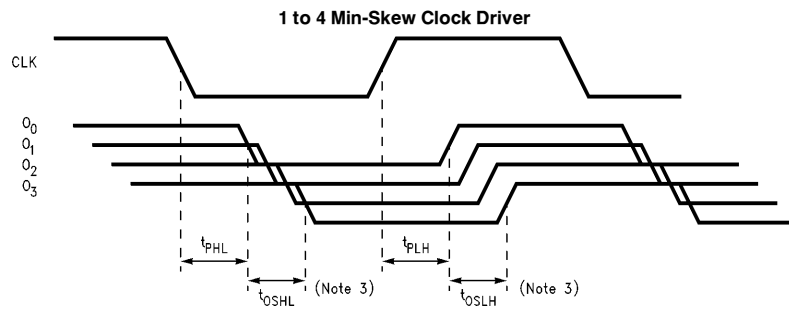
Note 1: Output-to-Output Skew is defined as the absolute value of the difference between the actual propagation delay from any outputs within the same packaged device. The specifications apply to any outputs switching in the same direction either HIGH to LOW (t_{OSHL}) or LOW to HIGH (t_{OSLH}) or in opposite directions both HL and LH (t_{OST}). t_{OSHL} and t_{OSLH} are characterized and guaranteed by design @1 MHz.

Note 2: Characterized at 66 MHz. Parameter guaranteed by design.

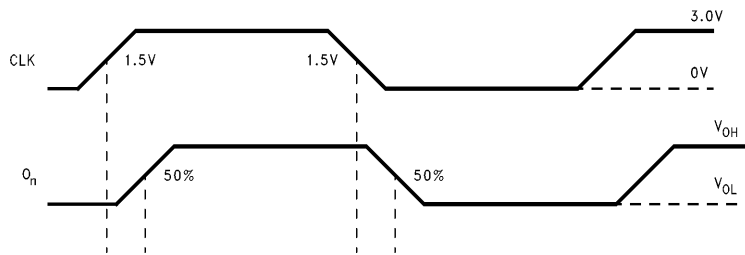
Note 3: Pin transition skew is the absolute difference between High-to-Low and Low-to-High propagation delay measure at a given output pin.

Note 4: Load capacitance includes the test jig.

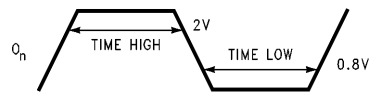
Timing Diagrams



TL/F/11752-4



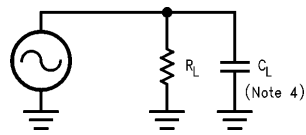
TL/F/11752-5



TL/F/11752-13

**Time high is measured with outputs above 2V.
Time low is measured with outputs below 0.8V.**

Test Circuit

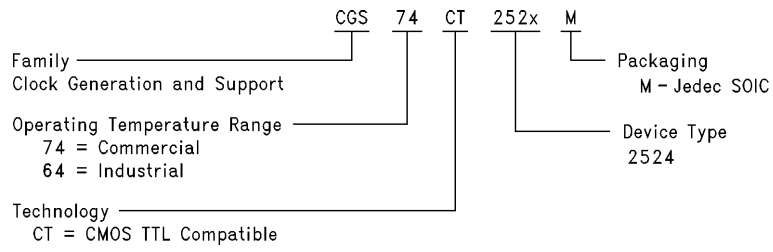


TL/F/11752-6

R_L is 500 Ω
 C_L is 50 pF for all prop delays and skew measurements.

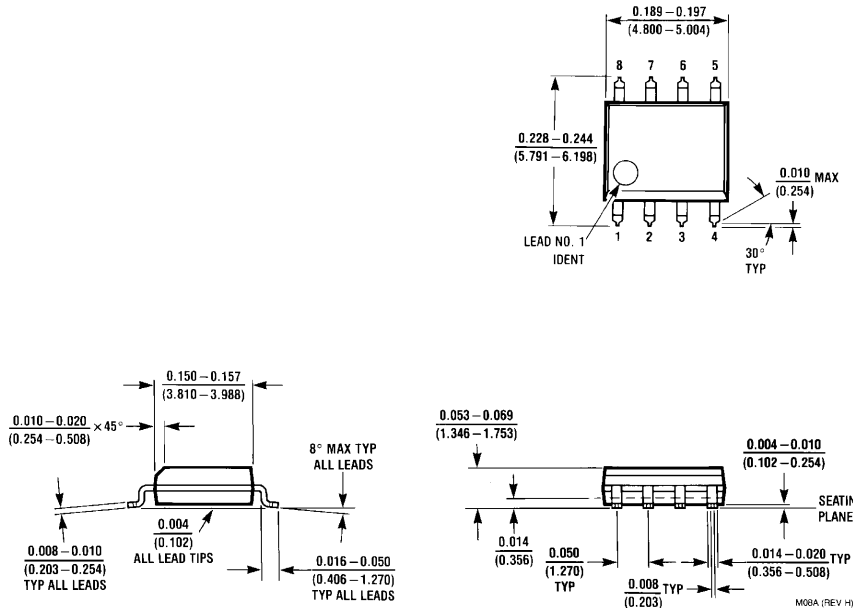
Ordering Information

Contact NSC Marketing for specific data of availability



TL/F/11752-14

Physical Dimensions inches (millimeters)



**8 Lead (0.150" Wide) Molded Small Outline Package (M)
NS Package Number M08A**

LIFE SUPPORT POLICY

NATIONAL'S PRODUCTS ARE NOT AUTHORIZED FOR USE AS CRITICAL COMPONENTS IN LIFE SUPPORT DEVICES OR SYSTEMS WITHOUT THE EXPRESS WRITTEN APPROVAL OF THE PRESIDENT OF NATIONAL SEMICONDUCTOR CORPORATION. As used herein:

1. Life support devices or systems are devices or systems which, (a) are intended for surgical implant into the body, or (b) support or sustain life, and whose failure to perform, when properly used in accordance with instructions for use provided in the labeling, can be reasonably expected to result in a significant injury to the user.
2. A critical component is any component of a life support device or system whose failure to perform can be reasonably expected to cause the failure of the life support device or system, or to affect its safety or effectiveness.



National Semiconductor Corporation
1111 West Bardin Road
Arlington, TX 76017
Tel: (800) 272-9959
Fax: (800) 737-7018

National Semiconductor Europe
Fax: (+49) 0-180-530 85 86
Email: cnjwge@tevm2.nsc.com
Deutsch Tel: (+49) 0-180-530 85 85
English Tel: (+49) 0-180-532 78 32
Français Tel: (+49) 0-180-532 93 58
Italiano Tel: (+49) 0-180-534 16 80

National Semiconductor Hong Kong Ltd.
13th Floor, Straight Block,
Ocean Centre, 5 Canton Rd.
Tsimshatsui, Kowloon
Hong Kong
Tel: (852) 2737-1600
Fax: (852) 2736-9960

National Semiconductor Japan Ltd.
Tel: 81-043-299-2309
Fax: 81-043-299-2408

National does not assume any responsibility for use of any circuitry described, no circuit patent licenses are implied and National reserves the right at any time without notice to change said circuitry and specifications.