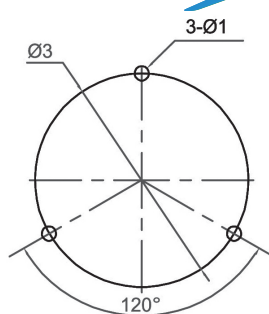
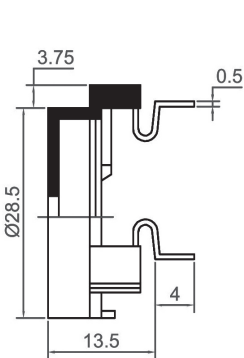
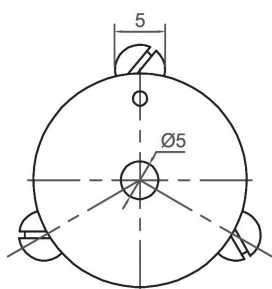
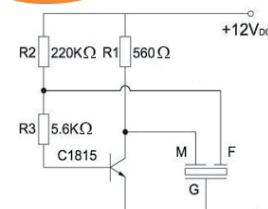


Self Drive Piezo Transducer (AC)

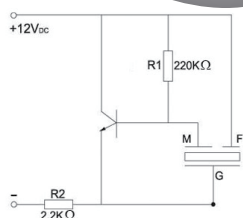
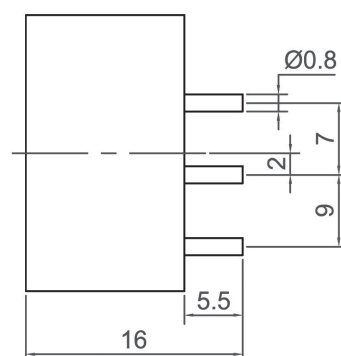
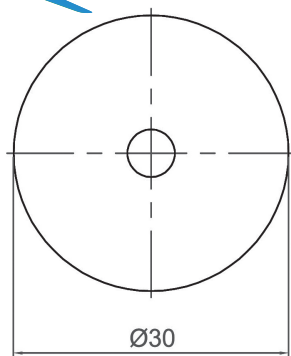


CIT2811

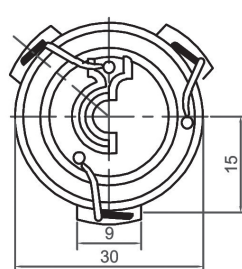
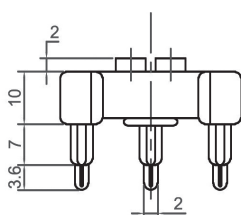
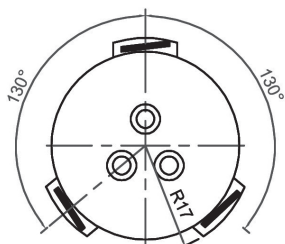
Canopus Part no.	Operating Voltage (VDC)	Rated Voltage (VDC)	Max Rated Current (mA)	Min Sound Output (dBA)	Resonant Frequency (Hz)	Operating Temperature (°C)	Housing	Terminal	Weight (g)
CIT2811H30TP	3 ~ 24	12	30	75 at 30cm	3000 ± 500	-20 ~ +70	PBT	Pin	3



CIT3010

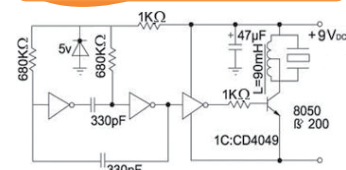


Canopus Part no.	Operating Voltage (VDC)	Rated Voltage (VDC)	Max Rated Current (mA)	Min Sound Output (dBA)	Resonant Frequency (Hz)	Operating Temperature (°C)	Housing	Terminal	Weight (g)
CIT3010H35NP	3 ~ 20	12	10	88 at 10cm	3500 ± 500	-30 ~ +70	Noryl	Pin	5



CIT3012

Canopus Part no.	Operating Voltage (VDC)	Rated Voltage (VDC)	Max Rated Current (mA)	Min Sound Output (dBA)	Resonant Frequency (Hz)	Operating Temperature (°C)	Housing	Terminal	Weight (g)
CIT3012H27TP	1.5 ~ 24	12	12	75 at 1m	2700 ± 500	-20 ~ +105	PBT	Pin	5



CANOPUS

Your Efficient Supplier
www.canopus.com.hk

TEL.: (852) 2806 2812

Fax: (852) 2652 2216