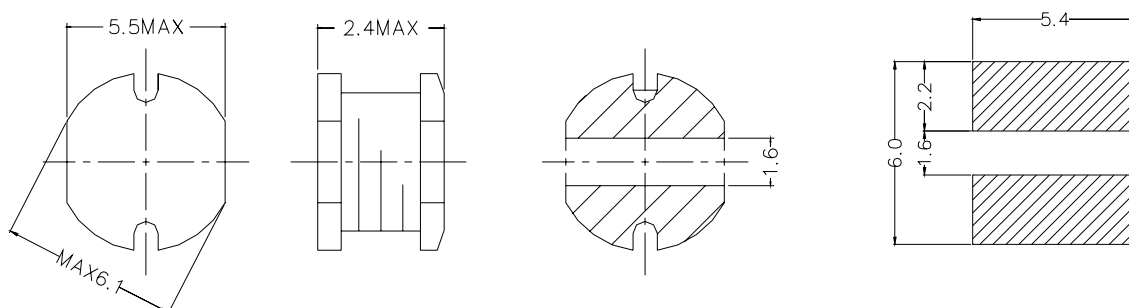


型名: CKD52

1. 尺寸(毫米)



2. 技术参数

NO.	品名	电感(μ H)	电阻 (m Ω) (MAX)	额定电流 (A)
1	CKD52-2R2	2.2	47	2.14
2	CKD52-2R7	2.7	55	2.08
3	CKD52-3R3	3.3	65	1.90
4	CKD52-3R9	3.9	75	1.84
5	CKD52-4R7	4.7	92	1.58
6	CKD52-5R6	5.6	120	1.44
7	CKD52-6R8	6.8	130	1.36
8	CKD52-8R2	8.2	152	1.10
9	CKD52-100	10	160	1.04
10	CKD52-120	12	200	0.96
11	CKD52-150	15	262	0.86
12	CKD52-180	18	400	0.77
13	CKD52-220	22	450	0.73
14	CKD52-270	27	500	0.64
15	CKD52-330	33	550	0.58
16	CKD52-390	39	600	0.54
17	CKD52-470	47	752	0.47
18	CKD52-560	56	1100	0.45
19	CKD52-680	68	1200	0.41
20	CKD52-820	82	1500	0.35
21	CKD52-101	100	1800	0.35
22	CKD52-121	120	1900	0.30
23	CKD52-151	150	2200	0.26
24	CKD52-181	180	2600	0.23
25	CKD52-221	220	3500	0.21
26	CKD52-271	270	4700	0.17

无铅

测定频率 100kHz

电感公差范围 ($\pm 30\%$)

额定电流: 指电感值减小到原值 65%时的电流