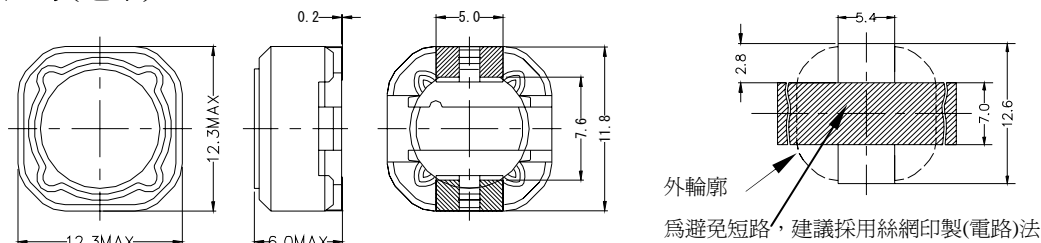


型名: CKRH125

## 1. 尺寸(毫米)



## 2. 技术参数

NO.	品名	电感( $\mu$ H)	电阻 ( $m\Omega$ ) (MAX)	额定电流 (A)
1	CKRH125-1R3	1.3	12	8.00
2	CKRH125-2R1	2.1	14	7.00
3	CKRH125-3R1	3.1	17	6.00
4	CKRH125-4R4	4.4	20	5.00
5	CKRH125-5R8	5.8	21	4.40
6	CKRH125-7R5	7.5	24	4.20
6	CKRH125-100	10	25	4.00
2	CKRH125-120	12	27	3.50
3	CKRH125-150	15	30	3.28
4	CKRH125-180	18	34	3.00
5	CKRH125-220	22	36	2.80
6	CKRH125-270	27	57	2.30
7	CKRH125-330	33	68	2.10
8	CKRH125-390	39	77	2.00
9	CKRH125-470	47	110	1.78
10	CKRH125-560	56	120	1.70
11	CKRH125-680	68	140	1.50
12	CKRH125-820	82	160	1.40
13	CKRH125-101	100	170	1.30
14	CKRH125-121	120	230	1.08
15	CKRH125-151	150	290	1.00
16	CKRH125-181	180	400	0.88
17	CKRH125-221	220	460	0.80
18	CKRH125-271	270	510	0.74
19	CKRH125-331	330	690	0.68
20	CKRH125-391	390	770	0.65
21	CKRH125-471	470	860	0.56
22	CKRH125-561	560	1200	0.54
23	CKRH125-681	680	1340	0.48
24	CKRH125-821	820	1530	0.42

无铅

测定频率 100kHz

电感公差范围 ( $\pm 30\%$ )

额定电流: 指电感值减小到原值 65%时的电流.

