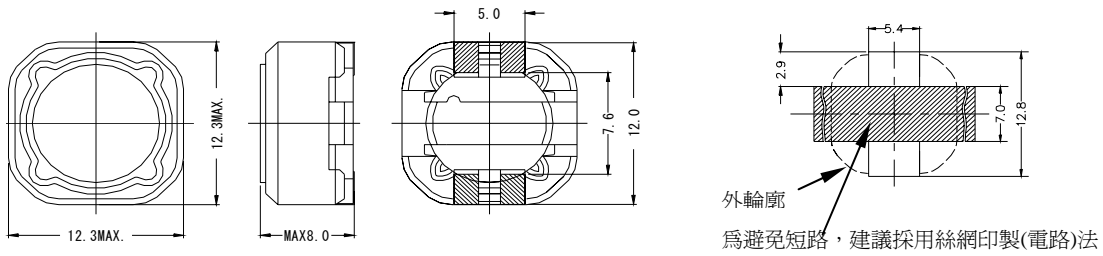


型号: CKRH127LD

1. 尺寸(毫米)



2. 技术参数

NO.	品名	电感(μ H)	电阻 (m Ω) (MAX)	额定电流 (A)
1	CKRH127LD-1R0	1.0	6.5	14.0
2	CKRH127LD-2R4	2.4	10.5	10.0
3	CKRH127LD-3R5	3.5	12.7	9.30
4	CKRH127LD-4R6	4.6	13.8	9.10
5	CKRH127LD-5R8	5.8	16.3	8.60
6	CKRH127LD-7R4	7.4	17.8	7.40
7	CKRH127LD-100	10	19.7	6.68
8	CKRH127LD-120	12	21.3	6.45
9	CKRH127LD-150	15	26.6	5.63
10	CKRH127LD-180	18	28.0	5.10
11	CKRH127LD-220	22	36.6	4.70
12	CKRH127LD-270	27	41.7	4.18
13	CKRH127LD-330	33	53.3	3.90
14	CKRH127LD-390	39	60.7	3.48
15	CKRH127LD-470	47	78.0	3.25
16	CKRH127LD-560	56	90.0	2.90
17	CKRH127LD-680	68	115	2.58
18	CKRH127LD-820	82	119	2.40
19	CKRH127LD-101	100	153	2.10
20	CKRH127LD-121	120	169	1.88
21	CKRH127LD-151	150	229	1.78
22	CKRH127LD-181	180	299	1.55
23	CKRH127LD-221	220	340	1.43
24	CKRH127LD-271	270	419	1.30
25	CKRH127LD-331	330	471	1.20
26	CKRH127LD-391	390	574	1.08
27	CKRH127LD-471	470	741	1.00
28	CKRH127LD-561	560	852	0.93
29	CKRH127LD-681	680	1130	0.85
30	CKRH127LD-821	820	1240	0.73
31	CKRH127LD-102	1000	1500	0.68

无铅

测定频率 100kHz

电感公差范围 ($\pm 30\%$)

额定电流: 指电感值减小到原值 65%时的电流

