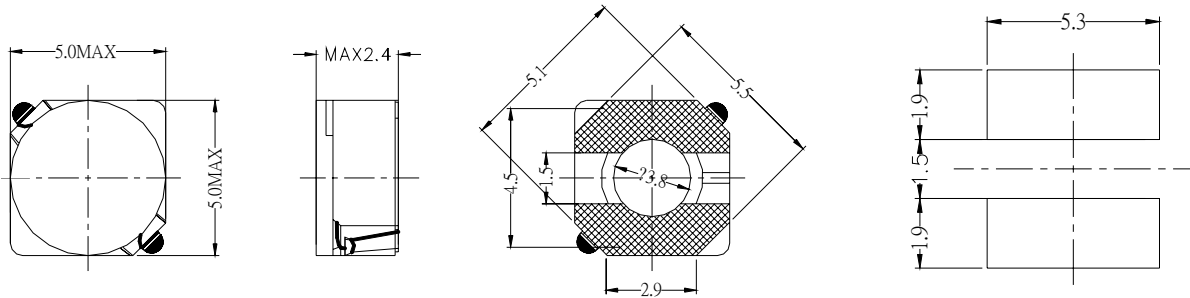


型号: CKRH4D22

1. 尺寸(毫米)



2. 技术参数

NO.	品名	电感(μ H)	电阻 (m Ω) (MAX)	额定电流 (A)
1	CKRH4D22-1R5	1.5	18	1.98
2	CKRH4D22-1R8	1.8	23	1.86
3	CKRH4D22-2R3	2.3	25	1.78
4	CKRH4D22-3R3	3.3	35	1.38
5	CKRH4D22-3R9	3.9	40	1.28
6	CKRH4D22-4R7	4.7	57	1.06
7	CKRH4D22-5R6	5.6	62	1.03
8	CKRH4D22-6R8	6.8	88	0.98
9	CKRH4D22-8R2	8.2	98	0.86
10	CKRH4D22-100	10	102	0.78
11	CKRH4D22-120	12	110	0.73
12	CKRH4D22-150	15	127	0.66
13	CKRH4D22-180	18	168	0.58
14	CKRH4D22-220	22	199	0.52
15	CKRH4D22-270	27	284	0.47
16	CKRH4D22-330	33	325	0.46
17	CKRH4D22-390	39	451	0.41
18	CKRH4D22-470	47	500	0.36
19	CKRH4D22-560	56	557	0.32
20	CKRH4D22-680	68	634	0.31
21	CKRH4D22-820	82	796	0.28
22	CKRH4D22-101	100	880	0.23
23	CKRH4D22-121	120	1142	0.22
24	CKRH4D22-151	150	1352	0.21

无铅

测定频率 100kHz

电感公差范围 ($\pm 30\%$)

额定电流: 指电感值减小到原值 65%时的电流.

