

MITSUBISHI HVIGBT MODULES  
**CM1800HC-34N**

4th-Version HVIGBT (High Voltage Insulated Gate Bipolar Transistor) Modules

HIGH POWER SWITCHING USE  
 INSULATED TYPE

**CM1800HC-34N**



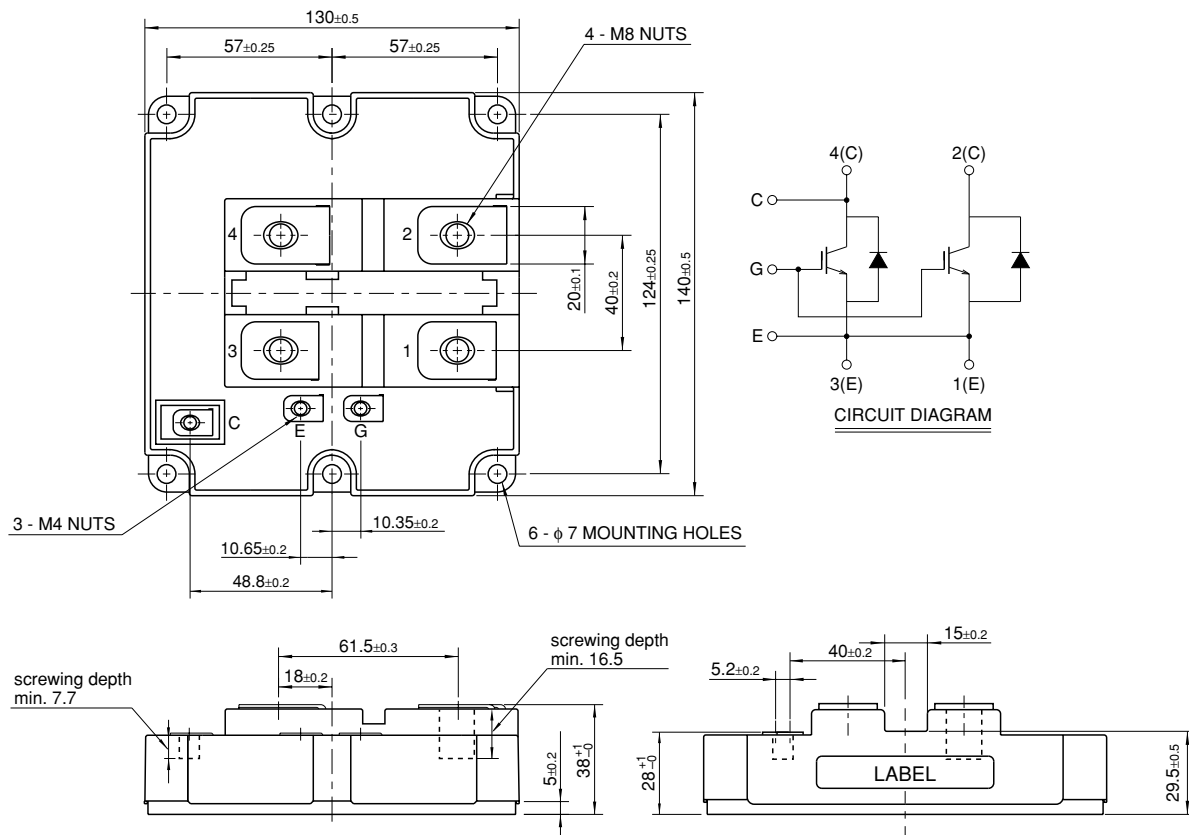
- IC ..... 1800A
- VCES ..... 1700V
- Insulated Type
- 1-element in a Pack
- AlSiC Baseplate
- Trench Gate IGBT : CSTBT™
- Soft Reverse Recovery Diode

**APPLICATION**

Traction drives, High Reliability Converters / Inverters, DC choppers

**OUTLINE DRAWING & CIRCUIT DIAGRAM**

Dimensions in mm



HVIGBT (High Voltage Insulated Gate Bipolar Transistor) Modules

Jul. 2005

## CM1800HC-34N

HIGH POWER SWITCHING USE  
INSULATED TYPE

4th-Version HVIGBT (High Voltage Insulated Gate Bipolar Transistor) Modules

## MAXIMUM RATINGS

Symbol	Item	Conditions	Ratings	Unit
V <sub>CE</sub> S	Collector-emitter voltage	V <sub>GE</sub> = 0V, T <sub>j</sub> = 25°C	1700	V
V <sub>GE</sub> S	Gate-emitter voltage	V <sub>CE</sub> = 0V, T <sub>j</sub> = 25°C	±20	V
I <sub>C</sub>	Collector current	T <sub>C</sub> = 75°C	1800	A
I <sub>CM</sub>		Pulse (Note 1)	3600	A
I <sub>E</sub> (Note 2)	Emitter current		1800	A
I <sub>EM</sub> (Note 2)		Pulse (Note 1)	3600	A
P <sub>C</sub> (Note 3)	Maximum power dissipation	T <sub>C</sub> = 25°C, IGBT part	10000	W
T <sub>j</sub>	Junction temperature		-40 ~ +150	°C
T <sub>op</sub>	Operating temperature		-40 ~ +125	°C
T <sub>stg</sub>	Storage temperature		-40 ~ +125	°C
V <sub>iso</sub>	Isolation voltage	RMS, sinusoidal, f = 60Hz, t = 1min.	4000	V
t <sub>p</sub> sc	Maximum short circuit pulse width	V <sub>CC</sub> = 1200V, V <sub>CE</sub> ≤ 1700V, V <sub>GE</sub> = 15V T <sub>j</sub> = 125°C	10	μs

## ELECTRICAL CHARACTERISTICS

Symbol	Item	Conditions	Limits			Unit
			Min	Typ	Max	
I <sub>CE</sub> S	Collector cut-off current	V <sub>CE</sub> = V <sub>CE</sub> S, V <sub>GE</sub> = 0V, T <sub>j</sub> = 25°C	—	—	6	mA
V <sub>GE(th)</sub>	Gate-emitter threshold voltage	I <sub>C</sub> = 180mA, V <sub>CE</sub> = 10V, T <sub>j</sub> = 25°C	6.0	7.0	8.0	V
I <sub>GES</sub>	Gate leakage current	V <sub>GE</sub> = V <sub>GES</sub> , V <sub>CE</sub> = 0V, T <sub>j</sub> = 25°C	—	—	0.5	μA
V <sub>CE(sat)</sub>	Collector-emitter saturation voltage	I <sub>C</sub> = 1800A, V <sub>GE</sub> = 15V, T <sub>j</sub> = 25°C (Note 4)	—	2.15	2.80	V
		I <sub>C</sub> = 1800A, V <sub>GE</sub> = 15V, T <sub>j</sub> = 125°C (Note 4)	—	2.40	—	
C <sub>ies</sub>	Input capacitance	V <sub>CE</sub> = 10V, f = 100kHz V <sub>GE</sub> = 0V, T <sub>j</sub> = 25°C	—	264	—	nF
C <sub>oes</sub>	Output capacitance		—	14.4	—	nF
C <sub>res</sub>	Reverse transfer capacitance		—	4.2	—	nF
Q <sub>g</sub>	Total gate charge	V <sub>CC</sub> = 850V, I <sub>C</sub> = 1800A, V <sub>GE</sub> = 15V, T <sub>j</sub> = 25°C	—	10.2	—	μC
V <sub>EC</sub> (Note 2)	Emitter-collector voltage	I <sub>E</sub> = 1800A, V <sub>GE</sub> = 0V, T <sub>j</sub> = 25°C (Note 4)	—	2.60	3.30	V
		I <sub>E</sub> = 1800A, V <sub>GE</sub> = 0V, T <sub>j</sub> = 125°C (Note 4)	—	2.30	—	
t <sub>d(on)</sub>	Turn-on delay time	V <sub>CC</sub> = 850V, I <sub>C</sub> = 1800A, V <sub>GE</sub> = ±15V RG(on) = 0.9Ω, T <sub>j</sub> = 125°C, L <sub>s</sub> = 100nH Inductive load	—	1.00	—	μs
t <sub>r</sub>	Turn-on rise time		—	0.40	—	μs
E <sub>on</sub>	Turn-on switching energy	V <sub>CC</sub> = 850V, I <sub>C</sub> = 1800A, V <sub>GE</sub> = ±15V RG(off) = 2.2Ω, T <sub>j</sub> = 125°C, L <sub>s</sub> = 100nH Inductive load	—	550	—	mJ/pulse
t <sub>d(off)</sub>	Turn-off delay time		—	1.20	—	μs
t <sub>f</sub>	Turn-off fall time	V <sub>CC</sub> = 850V, I <sub>C</sub> = 1800A, V <sub>GE</sub> = ±15V RG(off) = 2.2Ω, T <sub>j</sub> = 125°C, L <sub>s</sub> = 100nH Inductive load	—	0.30	—	μs
E <sub>off</sub>	Turn-off switching energy		—	560	—	mJ/pulse
t <sub>rr</sub> (Note 2)	Reverse recovery time	V <sub>CC</sub> = 850V, I <sub>C</sub> = 1800A, V <sub>GE</sub> = ±15V	—	1.00	—	μs
I <sub>rr</sub> (Note 2)	Reverse recovery current	RG(on) = 0.9Ω, T <sub>j</sub> = 125°C, L <sub>s</sub> = 100nH	—	720	—	A
Q <sub>rr</sub> (Note 2)	Reverse recovery charge	Inductive load	—	420	—	μC
E <sub>rec</sub> (Note 2)	Reverse recovery energy	Inductive load	—	280	—	mJ/pulse

Note 1. Pulse width and repetition rate should be such that junction temperature (T<sub>j</sub>) does not exceed T<sub>op</sub>max rating (125°C).

2. The symbols represent characteristics of the anti-parallel, emitter to collector free-wheel diode (FWDi).

3. Junction temperature (T<sub>j</sub>) should not exceed T<sub>j</sub>max rating (150°C).

4. Pulse width and repetition rate should be such as to cause negligible temperature rise.

**CM1800HC-34N**

**HIGH POWER SWITCHING USE  
INSULATED TYPE**

4th-Version HVIGBT (High Voltage Insulated Gate Bipolar Transistor) Modules

**THERMAL CHARACTERISTICS**

Symbol	Item	Conditions	Limits			Unit
			Min	Typ	Max	
R <sub>th(j-c)Q</sub>	Thermal resistance	Junction to Case, IGBT part	—	—	12.5	K/kW
R <sub>th(j-c)R</sub>		Junction to Case, FWDi part	—	—	28.0	K/kW
R <sub>th(c-f)</sub>	Contact thermal resistance	Case to Fin, $\lambda_{grease} = 1W/m \cdot K$	—	11.0	—	K/kW

**MECHANICAL CHARACTERISTICS**

Symbol	Item	Conditions	Limits			Unit
			Min	Typ	Max	
M	Mounting torque	M8 : Main terminals screw	7.0	—	20.0	N·m
		M6 : Mounting screw	3.0	—	6.0	
		M4 : Auxiliary terminals screw	1.0	—	3.0	
—	Mass		—	0.8	—	kg
CTI	Comparative tracking index		600	—	—	—
d <sub>a</sub>	Clearance distance in air		19.5	—	—	mm
d <sub>s</sub>	Creepage distance along surface		32.0	—	—	mm
LC-E(int)	Internal inductance	IGBT part	—	16	—	nH
RC-E(int)	Internal lead resistance	T <sub>C</sub> = 25°C	—	0.14	—	mΩ

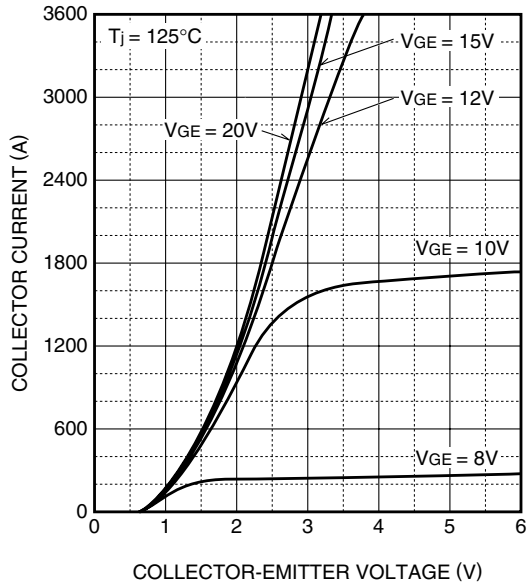
**CM1800HC-34N**

**HIGH POWER SWITCHING USE  
INSULATED TYPE**

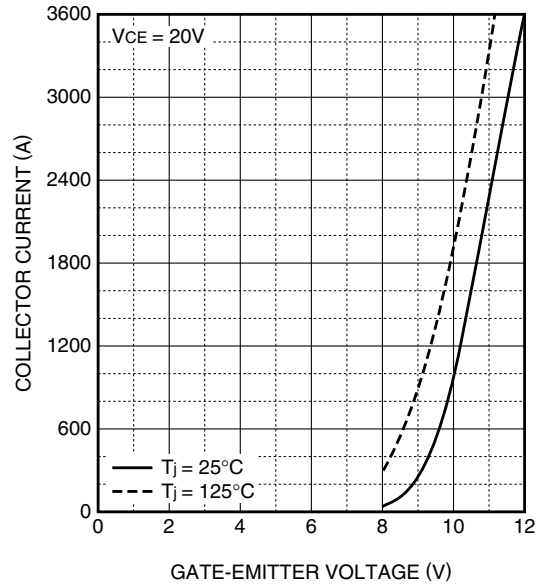
4th-Version HVIGBT (High Voltage Insulated Gate Bipolar Transistor) Modules

**PERFORMANCE CURVES**

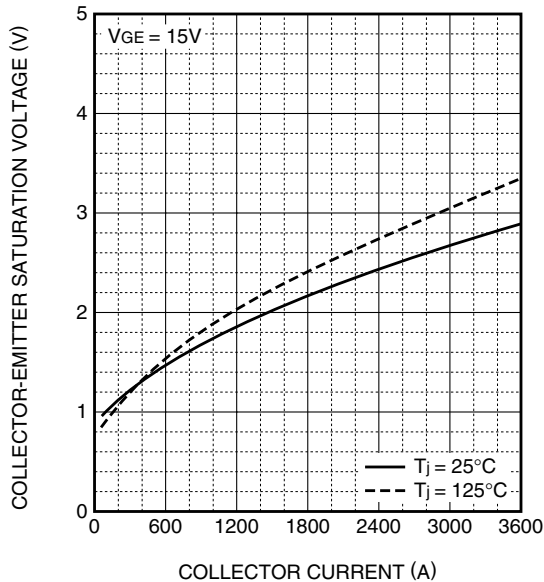
**OUTPUT CHARACTERISTICS  
(TYPICAL)**



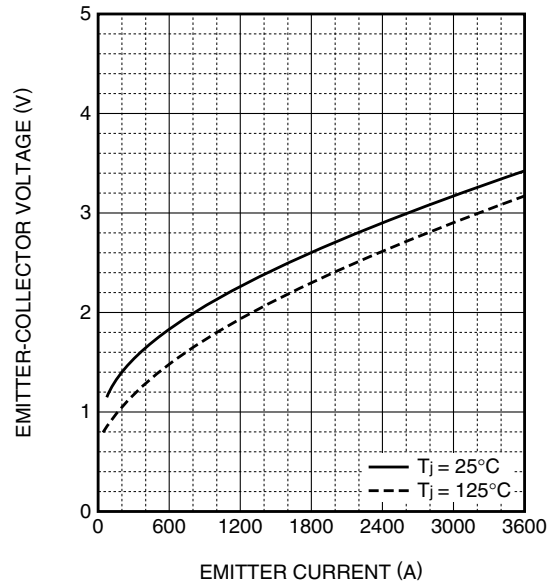
**TRANSFER CHARACTERISTICS  
(TYPICAL)**



**COLLECTOR-EMITTER SATURATION  
VOLTAGE CHARACTERISTICS  
(TYPICAL)**



**FREE-WHEEL DIODE  
FORWARD CHARACTERISTICS  
(TYPICAL)**

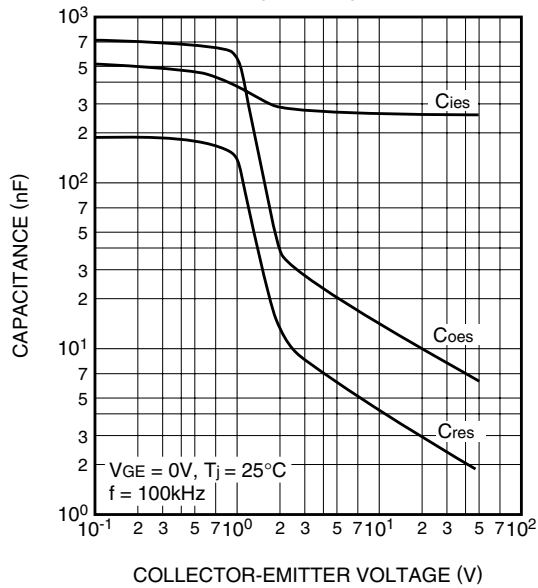


**CM1800HC-34N**

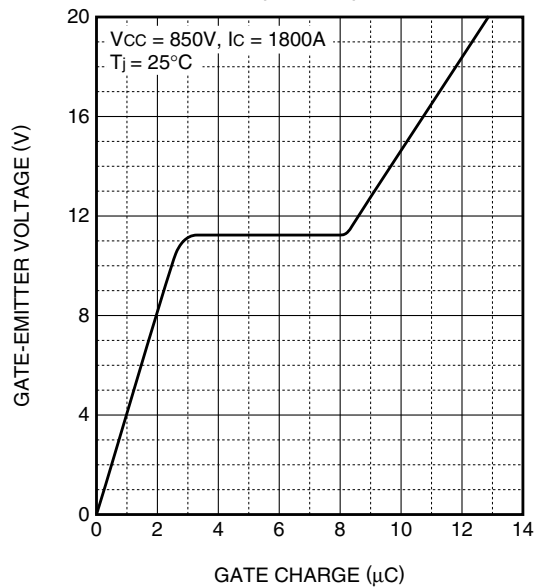
**HIGH POWER SWITCHING USE  
INSULATED TYPE**

4th-Version HVIGBT (High Voltage Insulated Gate Bipolar Transistor) Modules

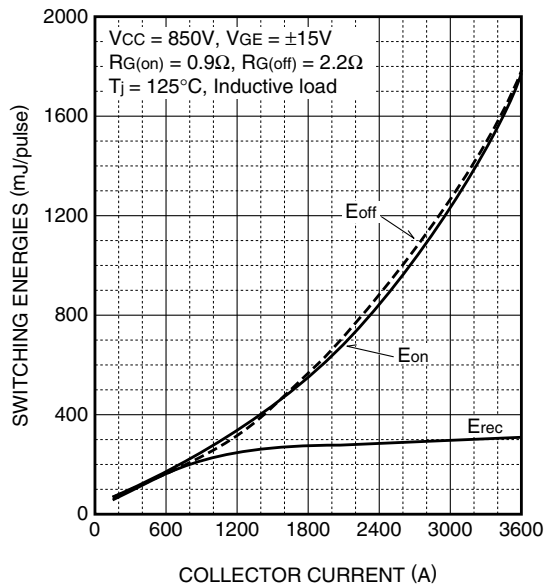
**CAPACITANCE CHARACTERISTICS  
(TYPICAL)**



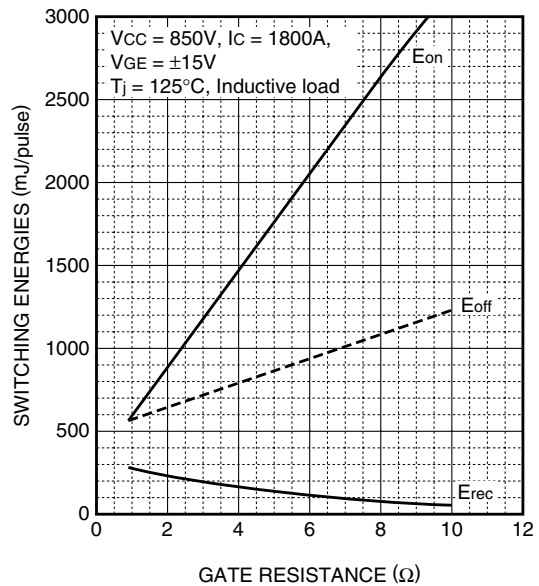
**GATE CHARGE CHARACTERISTICS  
(TYPICAL)**



**HALF-BRIDGE  
SWITCHING ENERGY CHARACTERISTICS  
(TYPICAL)**



**HALF-BRIDGE  
SWITCHING ENERGY CHARACTERISTICS  
(TYPICAL)**



# CM1800HC-34N

HIGH POWER SWITCHING USE  
INSULATED TYPE

4th-Version HVIGBT (High Voltage Insulated Gate Bipolar Transistor) Modules

