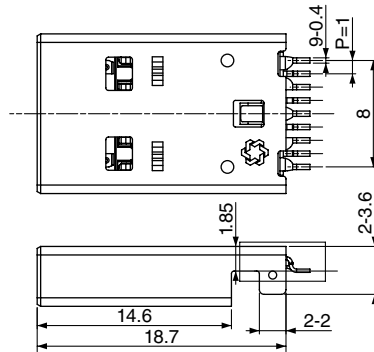
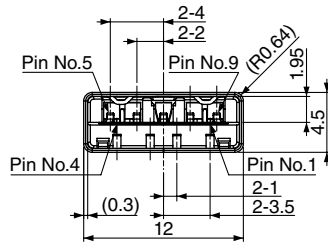


CMS1631

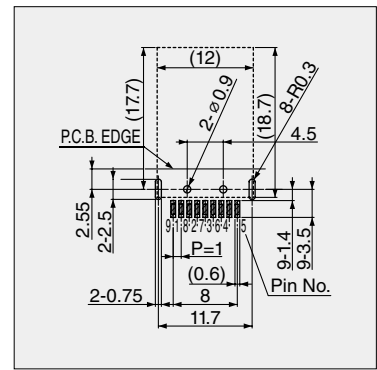
Standard-A SMT Plug



CMS1631-010010



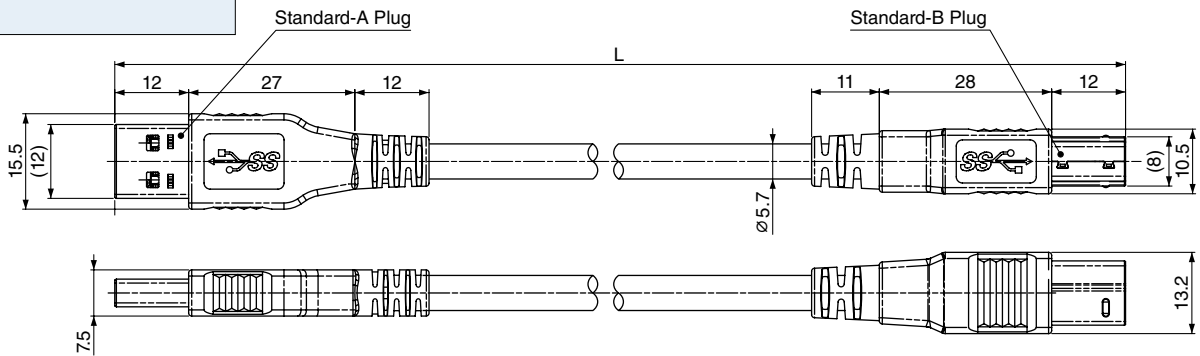
Rated	Power Line : 1.8A 30V AC Signal Line : 0.25A 30V AC
Contact Resistance	• Power-Ground Initial : 30mΩ max. • Other Contacts Initial : 50mΩ max.
Insulation Resistance	100MΩ min. at 100V DC
Withstanding Voltage	100V AC/1 minute
Insertion & Withdrawal Force	Insertion Force Initial : 35N max. Withdrawal Force Initial : 10N min.



PCB Layout (Top View)

HPC1645

Plug Cable (Standard-A to Standard-B)



Model No.	L
HPC1645-010010	1000 ± 50
HPC1645-010020	1500 ± 50
HPC1645-010030	2000 ± 50