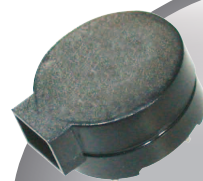
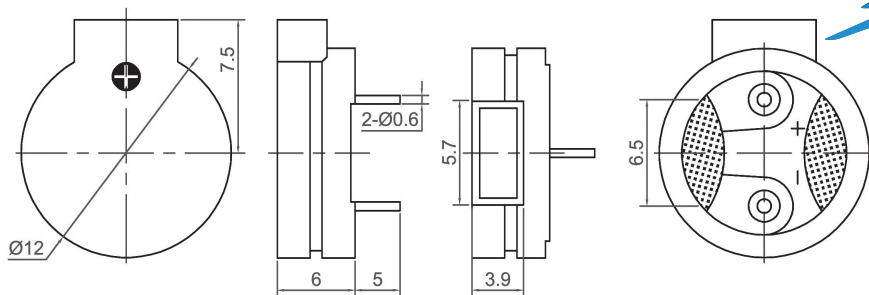
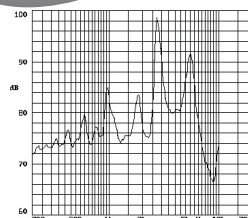


# Magnetic Transducer (AC)



**CMT1206-X**

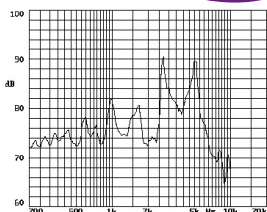
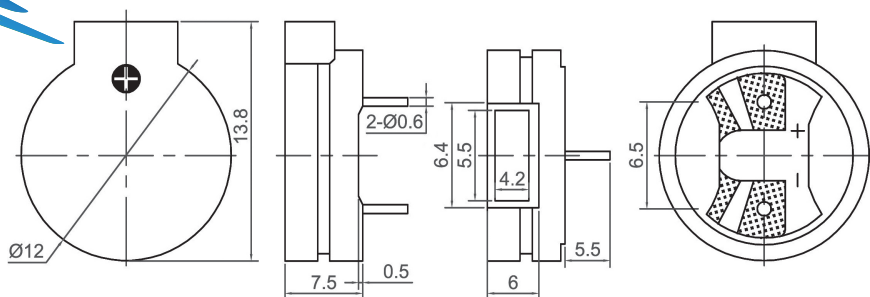
Canopus Part no.	Operating Voltage (V)	Rated Voltage (V)	Max Rated Current (mA)	Coil Resistance ( $\Omega$ )	Min Sound Output (dBA)	Resonant Frequency (Hz)	Operating Temperature ( $^{\circ}$ C)	Housing	Weight (g)
CMT1206A2400NPX	1 ~ 2	1.5	70	$6.5 \pm 1$	90 at 10cm	2400	-20 ~ +60	Noryl	1.5
CMT1206A2700NPX	1 ~ 2	1.5	70	$5 \pm 15$	85 at 10cm	2700	-25 ~ +70	Noryl	2
CMT1206A2731NPX	1 ~ 2	1.5	70	$6.5 \pm 1$	85 at 10cm	2731	-25 ~ +70	Noryl	2



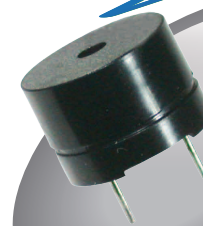
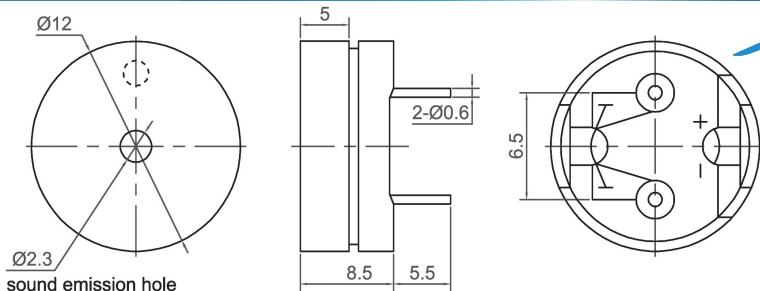
**CANOPUS**



**CMT1207-X**

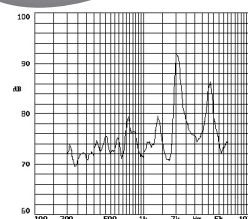


Canopus Part no.	Operating Voltage (V)	Rated Voltage (V)	Max Rated Current (mA)	Coil Resistance ( $\Omega$ )	Min Sound Output (dBA)	Resonant Frequency (Hz)	Operating Temperature ( $^{\circ}$ C)	Housing	Weight (g)
CMT1207A2048NPX-50R	1 ~ 2	1.5	10	$50 \pm 7.5$	70 at 10cm	2048	-20 ~ +60	Noryl	2
CMT1207A2048NPX-6R	1 ~ 3	1.5	80	$6.5 \pm 1$	85 at 10cm	2048	-20 ~ +60	Noryl	2
CMT1207A2731NPX-6R	1 ~ 2	1.5	70	$6.5 \pm 1$	85 at 10cm	2731	-20 ~ +60	Noryl	2



**CMT1208**

Canopus Part no.	Operating Voltage (V)	Rated Voltage (V)	Max Rated Current (mA)	Coil Resistance ( $\Omega$ )	Min Sound Output (dBA)	Resonant Frequency (Hz)	Operating Temperature ( $^{\circ}$ C)	Housing	Weight (g)
CMT1208A2048NP-16R	1 ~ 5	1.5	30	$16 \pm 4.5$	85 at 10cm	2048	-20 ~ +60	Noryl	2
CMT1208A2048NP-42R	1 ~ 5	1.5	15	$42 \pm 51$	80 at 10cm	2048	-20 ~ +60	Noryl	2
CMT1208A2048NP-50R	1 ~ 5	1.5	20	$50 \pm 7.5$	80 at 10cm	2048	-20 ~ +60	Noryl	2
CMT1208D2096NP	1 ~ 5	1.5	15	$42 \pm 4.5$	80 at 10cm	2096	-20 ~ +60	Noryl	2
CMT1208D2048NP	1 ~ 5	3.6	60	$16 \pm 4.5$	85 at 10cm	2048	-20 ~ +85	Noryl	2



**Your Efficient Supplier**  
[www.canopus.com.hk](http://www.canopus.com.hk)

TEL.: (852) 2806 2812

Fax: (852) 2652 2216