

Component General, Inc.

■ Stripline Base Mounted Attenuators

■ MECHANICAL SPECIFICATIONS



Heat Sink : Copper, Nickel Plated per QQ-N-290.

Substrate : Beryllium Oxide Ceramic.

Contact : Beryllium Copper, Gold Plated per MIL-G45204.

Cover : Alumina Ceramic.

Tolerance : $\pm .010$ " Unless specified.

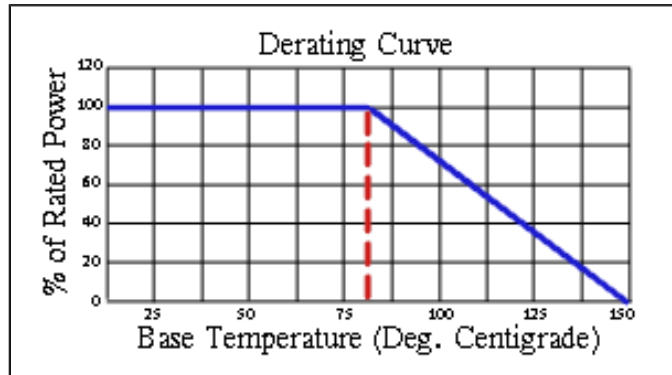
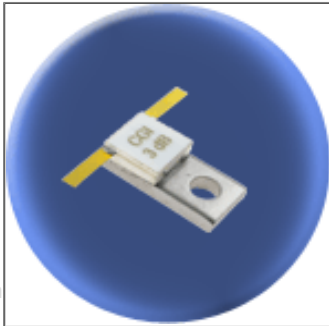
high power Attenuators product selection chart

CGI P/N	Power	Impedance	Frequency Range	VSWR	Attenuation Values
Note: Click a part number from the list below to see a data sheet for that part.					
CPA-20	20 W	50 Ω	DC - 1.0 GHz 1.0 - 2.5 GHz 2.5 - 4.0 GHz	1.15:1 1.35:1 1.50:1	1 to 20 dB
CPA-50	50 W	50 Ω	DC - .500 GHz .500 - 1.0 GHz	1.15:1 1.20:1	1 to 20 dB
CPA-100	100 W	50 Ω	DC - .750 GHz	1.25:1	1 to 20 dB

Component General, Inc.

P/N: CPA-20

Stripline Base Mounted Attenuators



Mechanical Specifications

Covers:

Alumina Ceramic.

Substrate:

Beryllium Oxide Ceramic.

Contact:

Beryllium Copper, Gold Plated per MIL-G-45204.

Length: 0.250" Min., Width: 0.060"

Typ. ,

Thickness 0.004" ± 0.002".

Heat Sink:

Copper, Nickel Plated per QQ-N-290.

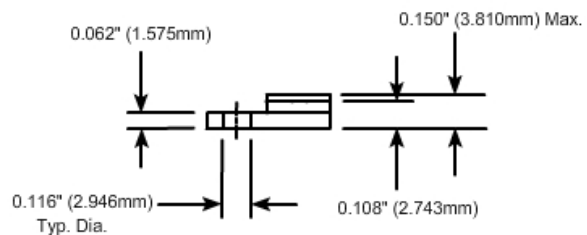
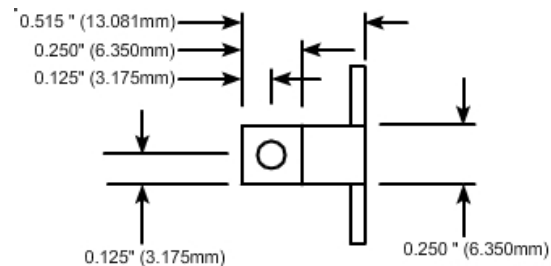
Tolerance:

± 0.010" unless specified.

Attenuation Accuracy (dB)

dB	DC - 1 GHz	1 - 2.5 GHz	2.5 - 4 GHz
1 - 5	± 0.5	± 0.5	± 0.5
6 - 9	± 0.5	± 0.5	± 1.0
10 - 15	± 0.75	± 1.0	± 1.5
16 - 20	± 1.0	± 2.0	± 3.0

Part Dimensions



Electrical Specifications

Attenuation Values:

1 - 20 dB.

(Other dB values available upon request.)

Frequency Range: VSWR (Max.):

DC - 1.0 GHz 1.15:1

1.0 - 2.5 GHz 1.35:1

2.5 - 4.0 GHz 1.50:1

Input Power:

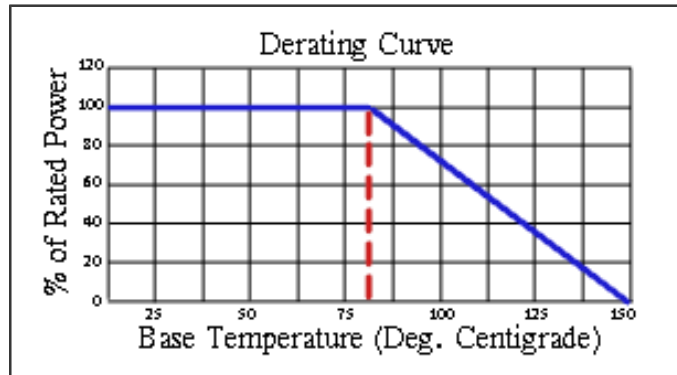
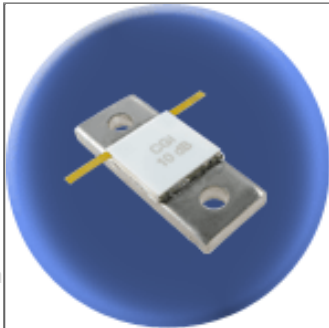
20 W

Note: The use of thermal mounting compound is recommended.

Component General, Inc.

P/N: CPA-100

Stripline Base Mounted Attenuators



Mechanical Specifications

Covers:

Alumina Ceramic.

Substrate:

Beryllium Oxide Ceramic.

Contact:

Beryllium Copper, Gold Plated per MIL-G-45204.

Length: 0.250" Min., Width: 0.060"

Typ. ,

Thickness 0.004" ± 0.002".

Heat Sink:

Copper, Nickel Plated per QQ-N-290.

Tolerance:

± 0.010" unless specified.

Electrical Specifications

Attenuation Values:

1 - 20 dB.

(Other dB values available upon request.)

Frequency Range: VSWR (Max.):

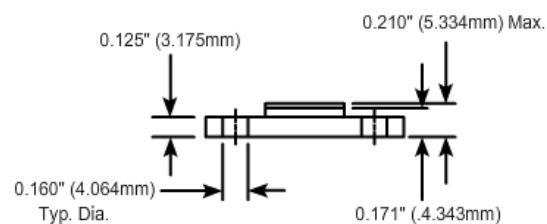
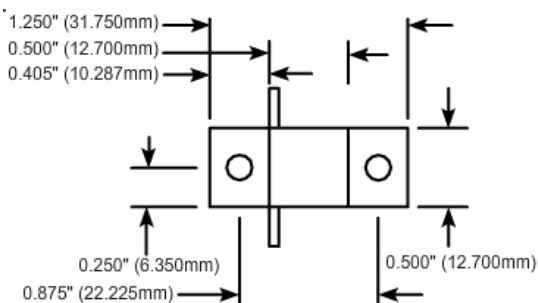
DC - 0.75 GHz

1.25:1

Input Power:

100 W

Part Dimensions



Attenuation Accuracy (dB)

DC - 0.75 GHz

+ 0.5



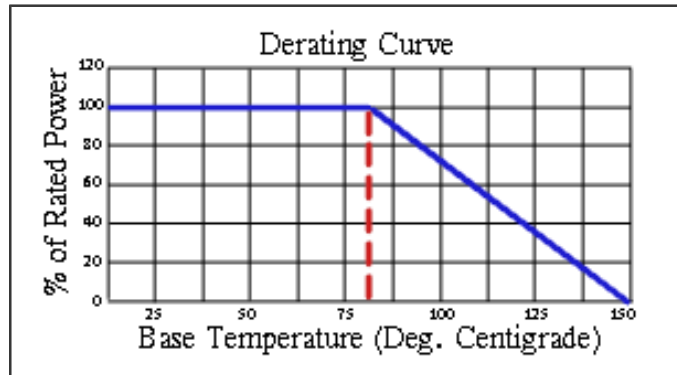
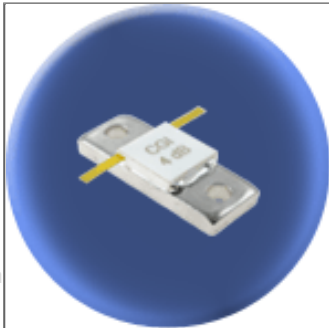
Note: The use of thermal mounting compound is recommended.

2445 Success Drive Odessa, FL 33556
727-376-6655 or 800-246-4084

Component General, Inc.

P/N: CPA-50

Stripline Base Mounted Attenuators



Mechanical Specifications

Covers:

Alumina Ceramic.

Substrate:

Beryllium Oxide Ceramic.

Contact:

Beryllium Copper, Gold Plated per MIL-G-45204.
 Length: 0.250" Min.,
 Width: 0.060" Typ.,
 Thickness 0.004" ± 0.002".

Heat Sink:

Copper, Nickel Plated per QQ-N-290.

Tolerance:

± 0.010" unless specified.

Electrical Specifications

Attenuation Values:

1 - 20 dB.
 (Other dB values available upon request.)

Frequency Range:

DC - 0.5 GHz
 0.5 - 1.0 GHz

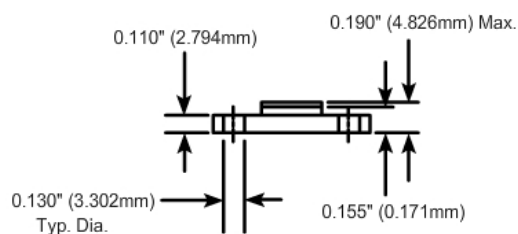
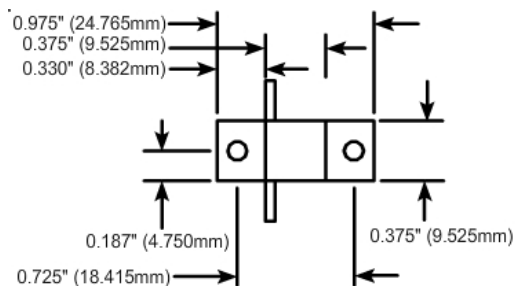
VSWR (Max.):

1.15:1
 1.20:1

Input Power:

50 W

Part Dimensions



Attenuation Accuracy (dB)

DC - 0.5 GHz	+ 0.3
0.5 - 1.0 GHz	+ 0.5



Note: The use of thermal mounting compound is recommended.