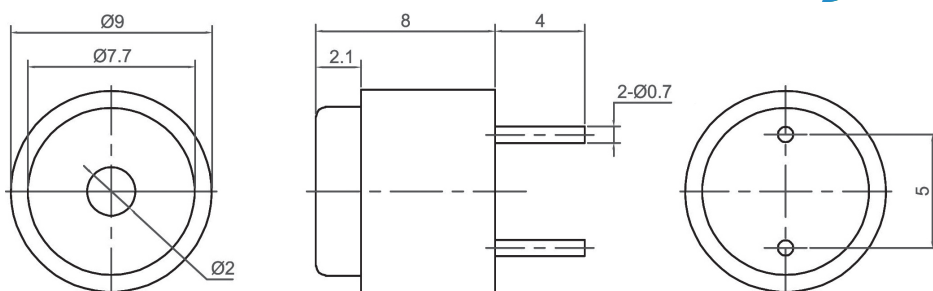
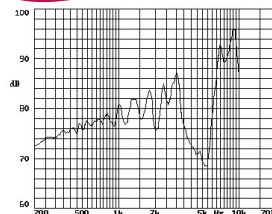


External Drive Piezo Transducer (AC)

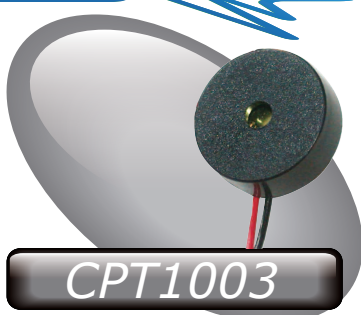


CPT0908

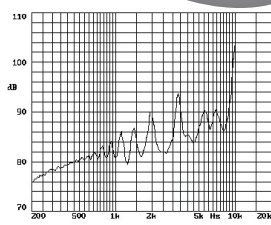
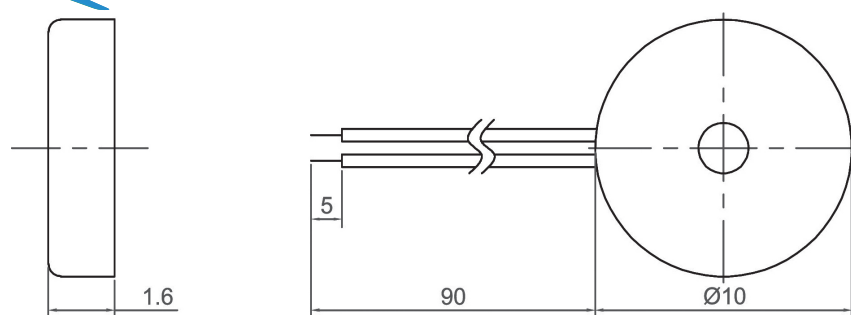


Canopus Part no.	Min sound Output (dBA)	Rated Voltage (V)	Max Input Voltage (V)	Resonant Frequency (Hz)	Capacitance (pF)	Operating Temperature (°C)	Housing	Weight (g)
CPT0908H29TP	75 AT 10cm	10 Vp-p	30 Vrms	2900	5600 ± 30% at 1000Hz	-25 ~ +65	PBT	0.5

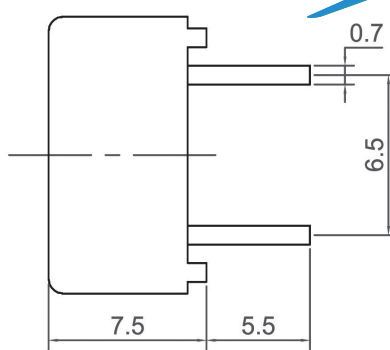
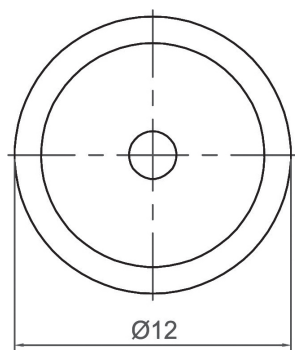
CANOPUS



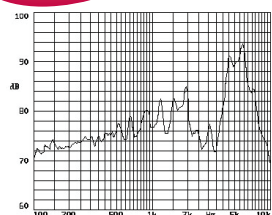
CPT1003



Canopus Part no.	Min sound Output (dBA)	Rated Voltage (V)	Max Input Voltage (V)	Resonant Frequency (Hz)	Capacitance (pF)	Operating Temperature (°C)	Housing	Weight (g)
CPT1003H32BW	80 AT 10cm	10 Vp-p	30 Vrms	3200	11000 ± 30% at 1000Hz	-20 ~ +70	ABS	1



CPT1207



Canopus Part no.	Min sound Output (dBA)	Rated Voltage (V)	Max Input Voltage (V)	Resonant Frequency (Hz)	Capacitance (pF)	Operating Temperature (°C)	Housing	Weight (g)
CPT1207I45NP	80 AT 10cm	12 Vp-p	30 Vrms	4500	6000 ± 30% at 1000Hz	-20 ~ +80	PPO	2

Your Efficient Supplier
www.canopus.com.hk

TEL.: (852) 2806 2812

Fax: (852) 2652 2216