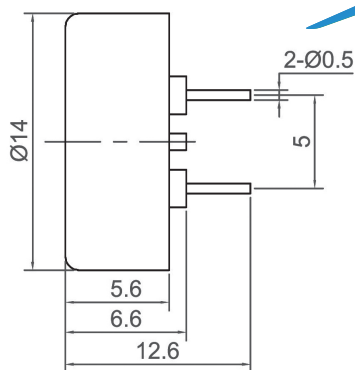
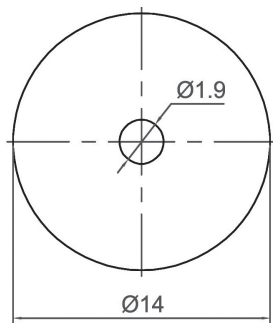
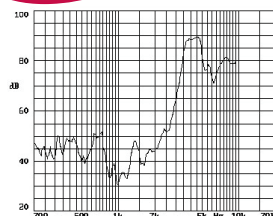


# External Drive Piezo Transducer (AC)



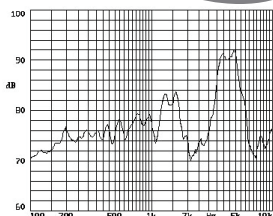
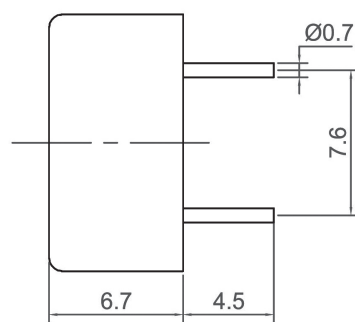
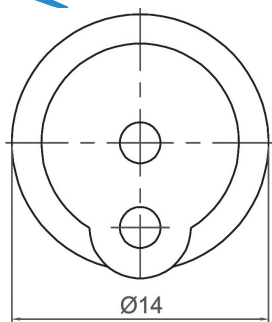
**CPT1406**



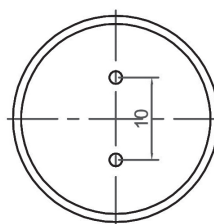
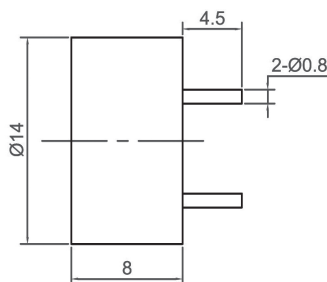
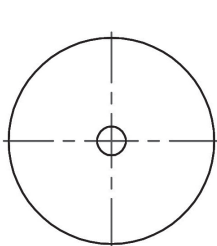
Canopus Part no.	Min sound Output (dBA)	Rated Voltage (V)	Max Input Voltage (V)	Resonant Frequency (Hz)	Capacitance (pF)	Operating Temperature (°C)	Housing	Weight (g)
CPT1406C40TP	75 AT 10cm	3 Vp-p	30 Vrms	4000	18000 ± 30% at 1000Hz	-20 ~ +70	PBT	1.5



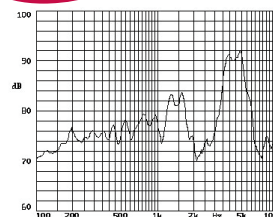
**CPT1407**



Canopus Part no.	Min sound Output (dBA)	Rated Voltage (V)	Max Input Voltage (V)	Resonant Frequency (Hz)	Capacitance (pF)	Operating Temperature (°C)	Housing	Weight (g)
CPT1407G40NP	80 AT 10cm	9 Vp-p	20 Vrms	4000	13000 ± 30% at 1000Hz	-20 ~ +70	Noryl	1



**CPT1408**



Canopus Part no.	Min sound Output (dBA)	Rated Voltage (V)	Max Input Voltage (V)	Resonant Frequency (Hz)	Capacitance (pF)	Operating Temperature (°C)	Housing	Weight (g)
CPT1408H40NP	85 AT 10cm	10 Vp-p	30 Vrms	4000	13000 ± 30% at 1000Hz	-20 ~ +70	Noryl	1

**CANOPUS**

**Your Efficient Supplier**  
[www.canopus.com.hk](http://www.canopus.com.hk)

TEL.: (852) 2806 2812

Fax: (852) 2652 2216