

Service Manual

AUTOMOTIVE AFTERMARKET

COMPACT
disc
DIGITAL AUDIO



CQ-C1001W1

Removable Front Panel CD Player / Receiver

Specification*

General		Frequency Range	531 - 1,602kHz
Power Supply	DC 12V (11V - 16V), Test Voltage 14.4V	Usable Sensitivity	28dB/μV (25μV, S/N 20dB)
	Negative Ground	CD Player	
Tone Controls	Bass ; ±12dB at 100Hz Treble ; ±12dB at 10kHz	Sampling Frequency	8 times oversampling
Current Consumption	Less than 2.2A (CD play mode, 0.5W×4ch)	Pick-Up Type	Astigma 3-beam
Maximum Power Output	50W×4ch (at 1kHz, Vol. Max.)	Light Source	Semiconductor Laser
Suitable Speaker Impedance	4-8Ω	Wavelength	780nm
Pre-Amp Output Voltage	2.5V (CD play mode; 1kHz, 0dB)	Frequency Response	20Hz to 20,000Hz (±1dB)
Output Impedance	200Ω	Signal to Noise Ratio	96dB
FM Stereo Radio		Dimensions**	178×50×155mm
Frequency Range	87.5 - 108MHz	Weight**	1.4kg
Usable Sensitivity	11.0dBf (1.25μV, 75Ω)		

* Specifications and the design are subject to possible modification without notice due to improvements.


** Dimensions and Weight shown are approximate.

AM Radio

WARNING

This service information is designed for experienced repair technicians only and is not designed for use by the general public. It does not contain warnings or cautions to advise non-technical individuals of potential dangers in attempting to service a product. Products powered by electricity should be serviced or repaired only by experienced professional technicians. Any attempt to service or repair the product or products dealt with in this service information by anyone else could result in serious injury or death.

IMPORTANT SAFETY NOTICE

There are special components used in this equipment which are important for safety. These parts are marked by  in the Schematic Diagrams, Circuit Board Diagrams, Exploded Views and Replacement Parts List. It is essential that these critical parts should be replaced with manufacturer's specified parts to prevent shock, fire or other hazards. Do not modify the original design without permission of manufacturer.

Panasonic[®]

© 2005 Matsushita Electric Industrial Co., Ltd. All rights reserved. Unauthorized copying and distribution is a violation of law.

CONTENTS

	Page	Page	
1 ABOUT LEAD FREE SOLDER (PbF)	2	11 PACKAGE AND IC BLOCK DIAGRAM	8
2 FEATUERS	2	12 REPLACEMENT PARTS LIST	12
3 LASER PRODUCTS	2	13 EXPLODED VIEW (Unit)	16
4 REPLACEING THE FUSE	2	14 CD PLAYER MECHANICAL PARTS LIST	17
5 MAINTENANCE	3	15 EXPLODED VIEW (CD Deck)	18
6 NOTES	3	16 WIRING DIAGRAM	19
7 DIMENSIONS	3	17 SCHEMATIC DIAGRAM-1	23
8 WIRING CONNECTION	4	18 SCHEMATIC DIAGRAM-2	25
9 BLOCK DIAGRAM	5	19 SCHEMATIC DIAGRAM for printing with A4 size	27
10 TERMINALS DESCRIPTION	6		

1 ABOUT LEAD FREE SOLDER (PbF)

Distinction of PbF PCB:

PCBs (manufactured) using lead free solder will have a PbF stamp on the PCB.

Caution :

- Pb free solder has a higher melting point than standard solder; Typically the melting point is 50 - 70°F (30 - 40°C) higher. Please use a soldering iron with temperature control and adjust it to 700 ± 20°F (370 ± 10°C). In case of using high temperature soldering iron, please be careful not to heat too long.
- Pb free solder will tend to splash when heated too high (about 1100°F/600°C)
- This lead free solder will be used for the products after serial No. 1,000,001.

2 FEATUERS

- 18-FM, 6-AM presets with preset scan
- Digital servo for reliable CD playback.
- Removable face plate.

3 LASER PRODUCTS

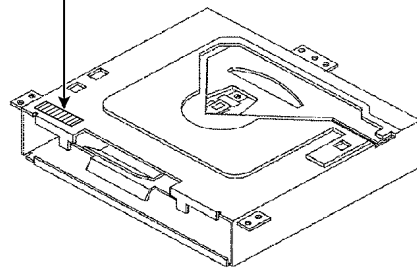
CAUTION:

This product utilizes a laser diode with the unit turned "on", laser radiation is emitted from the pickup lens.

Laser radiation from the pickup lens is safety level, but be sure the followings:

1. Do not disassemble the optical pickup unit, since radiation from exposed laser diode is dangerous.
2. Do not adjust the variable resistor on the pickup unit. It was already adjusted.
3. Do not look at the focus lens using optical instruments.
4. Recommend not to look at pickup lens for a long time.

DANGER! Invisible laser radiation when open. Avoid direct exposure to beam.



Deck Ass'y (Upper Side)

Caution

This Product utilizes a laser. Use of controls or adjustments or performance of procedures other than those specified herein may result in hazardous radiation exposure.

4 REPLACEING THE FUSE

Use fuses of the same specified rating (15A). Using different substitutes or fuses with higher ratings, or connecting the product directly without a fuse, could cause fire or damage to the stereo unit.

5 MAINTENANCE

Your products is designed and manufactured to ensure a minimum of maintenance. Use a dry, a soft cloth for routine exterior cleaning. Never use benzine, thinner or other solvents.

6 NOTES

[RADIO BLOCK]

Do not align the AM/FM package block. When the package block is necessary, it will be supplied already aligned at the factory.

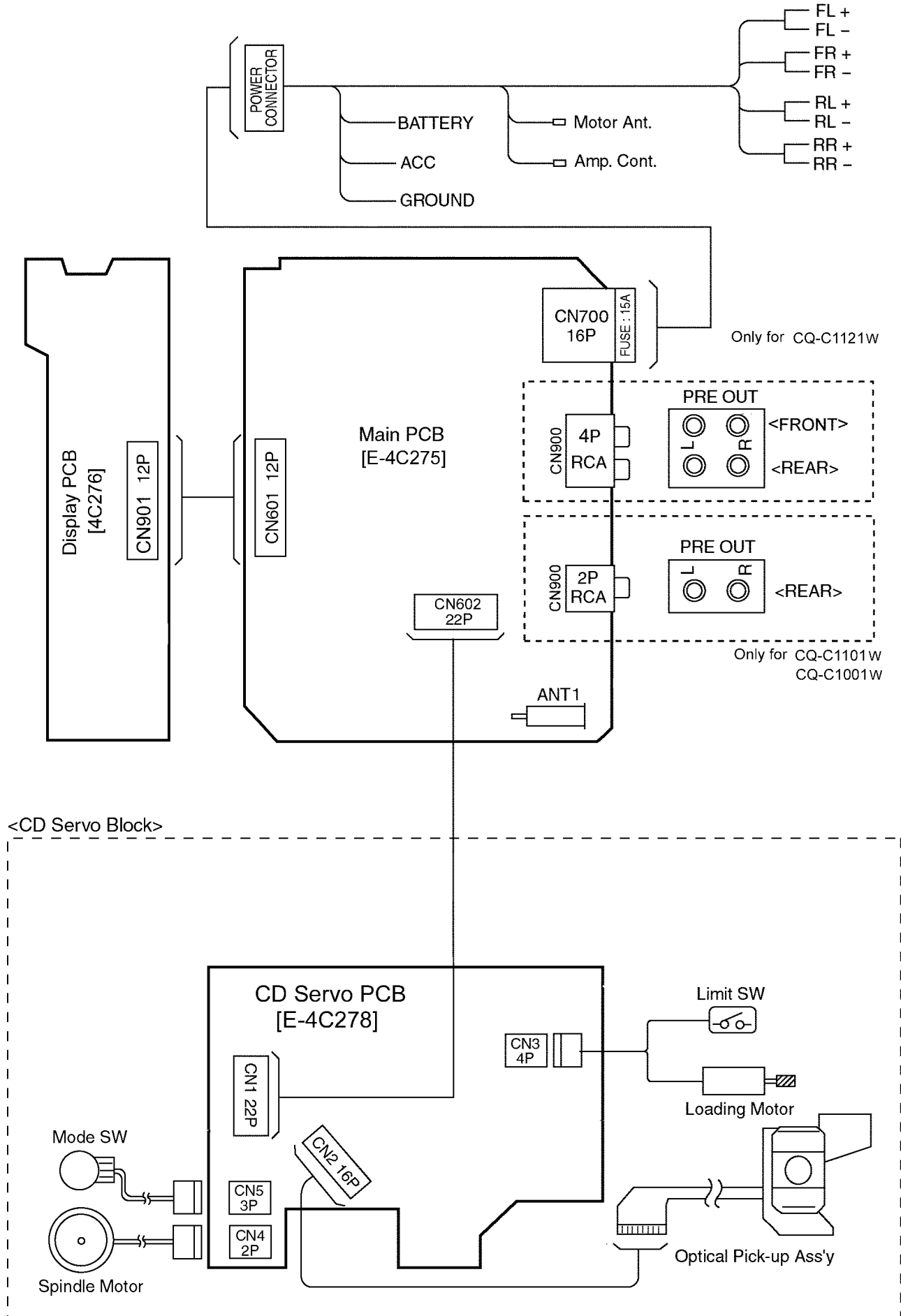
[CD DECK BLOCK]

This model has no servo alignment points because microcomputer controls the servo circuit.

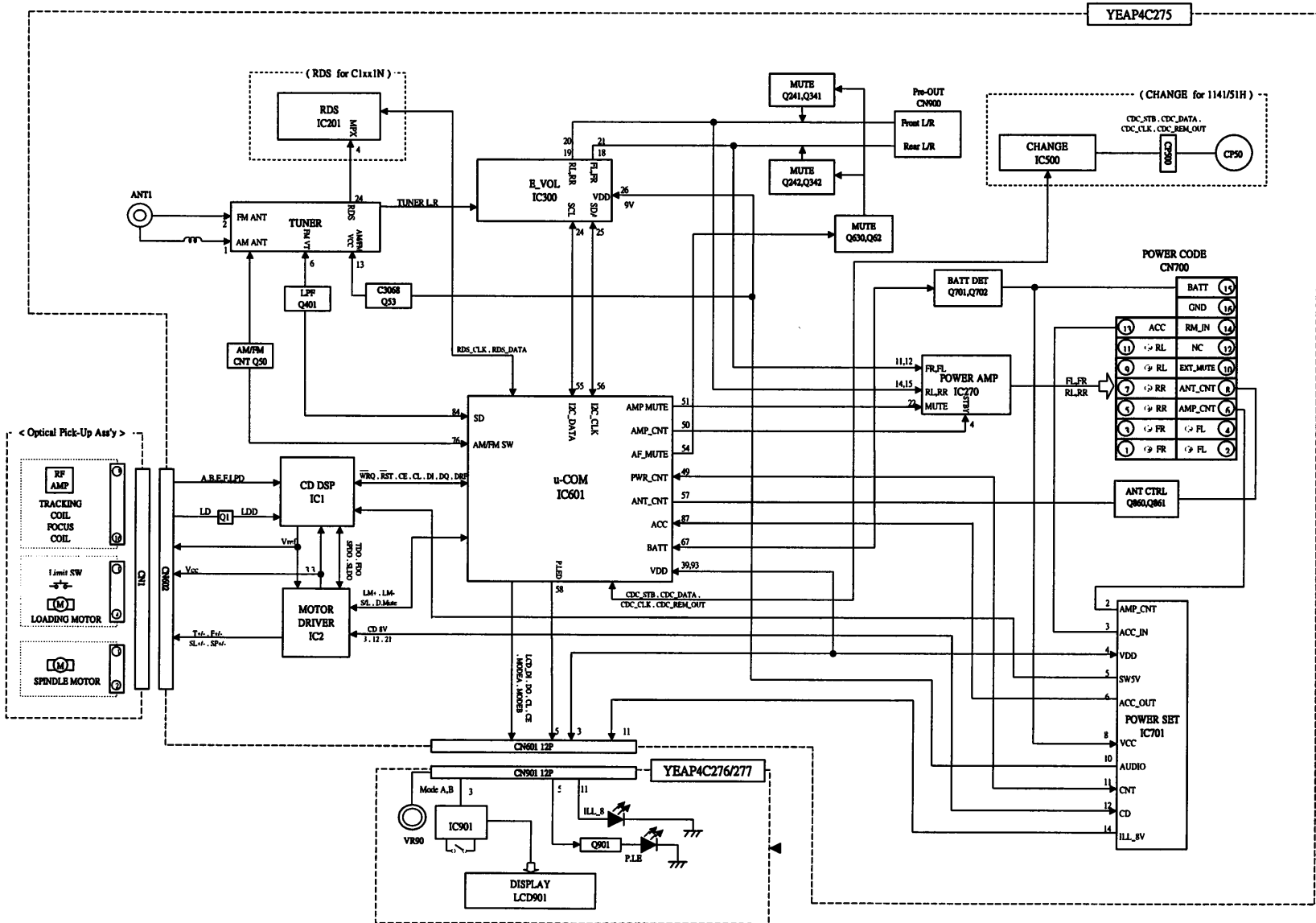
7 DIMENSIONS



8 WIRING CONNECTION



9 BLOCK DIAGRAM



5

10 TERMINALS DESCRIPTION

10.1. Main Block

IC601 : LC7237819C89

Pin No.	Port	Description	I/O(V)	FM(V)	AM(V)	CD(V)
1	XIN	4.5 MHz X'tal and Connection	I	2.4	2.49	2.48
2	TEST2	GND connection	I	0	0	0
3	VREG	Bypass condenser connected.	O	2.9	2.99	2.99
4	VSSCPU	GND connection	-	0	0	0
5	CDC_DAT A	CD changer data	I	0.01	0.01	0.01
6	N.C.	None	O	0.01	0.01	0
7	CDC_CLK	CD changer clock	I	0	0.01	0.01
8	CDC_REM_OUT	CD changer Remote out	O	0.01	0.01	0.01
9	LCD_DO	LCD data output	I	5.1	5.17	5.17
10	LCD_DI	LCD data input	O	4.95	5.01	4.92
11	LCD_CLK	LCD clock	O	5	5.14	5.12
12	LCD_CE	LCD chip enable output	O	0.1	0.18	0.23
13	CD_DO	CD data output	I	5.3	5.27	4.92
14	CD_DI	CD data input	O	0.01	0.01	5.12
15	CD_CLK	CD clock	O	5	5.17	5.1
16	CD_CE	CD chip enable	O	0.01	0.01	0.4
17	CD_EM	CD eject	O	0.02	0.02	0.02
18	CD_LM	CD loading	O	0.01	0.01	5.15
19	CD_S/L	CD 24PIN connection	O	0.01	0	0
20	CD_WRQ	CD WRQ connection	I	5.3	5.29	0.1
21	CD_INSW1	CD insert SW input	I	0.1	0.1	0.1
22	CD_SW2	CD MECHA SW2	I	5	5.14	5.13
23	CD_LIMIT_SW	CD limit SW	I	0	0	5.26
24	CD_DRF	CD DRF	I	0	0	5.15
25	CD_RST	CD reset	O	5	5.17	5.14
26	CD_DMUTE	CD mute	O	0	0	0
27	N.C.	None	O	0	0	0
28	N.C.	None	O	0	0	5.18
29	PANEL	Panel detect	I	5.18	5.18	0
30	N.C.	GND connection	I	0	0	0
31	N.C.	GND connection	I	0	0	0
32	N.C.	GND connection	I	0	0	0
33	N.C.	None	O	0	0	0
34	N.C.	None	O	0	0	0
35	N.C.	None	O	0	0	0
36	N.C.	None	O	0	0	0
37	N.C.	None	O	0	0	0
38	N.C.	None	O	0	0	5.14
39	VDDPORT	Power supply of PORT	-	5	5.17	0
40	VSSPORT	GND of PORT	-	0	0	0
41	N.C.	None	O	0	0	0
42	N.C.	None	O	0	0	0
43	N.C.	None	O	0	0	0
44	N.C.	None	O	0	0	0
45	N.C.	None	O	0	0	0
46	N.C.	None	O	0	0	0
47	N.C.	None	O	0	0.02	0.02
48	N.C.	None	O	0	0	0
49	PWR_CNT	Power control	O	5	5.15	5.14
50	AMP_CNT	Amp stand-by	O	5	5.15	5.13
51	AMP_MUTE	Amp mute	O	5	5.15	5.15
52	N.C.	None	O	0.03	0.02	0.02
53	SSC	Tuner search sensitivity change	O	0.06	0.06	0.06
54	AF_MUTE	AF mute	O	5	5.17	5.15
55	I2C_DATA	Electronic data	O	5	5.17	5.16

Pin No.	Port	Description	I/O(V)	FM(V)	AM(V)	CD(V)
56	I2C_CLK	Electronic clock	O	5	5.17	5.16
57	ANT_CNT	Motor antenna control	O	5	5.17	5.17
58	POWER_LED	Power LED	O	0.1	0.17	0.17
59	N.C.	None	O	0.03	0.02	0
60	N.C. (BZ_OUT)	None	O	0.03	0.02	0
61	N.C.	None	O	0.03	0.02	0
62	N.C.	None	O	0.03	0.02	0
63	N.C.	None	O	0.03	0.02	0
64	N.C.	None	O	0.03	0.02	0
65	N.C.	None	O	0.03	0.02	0
66	TEL_MUTE	External MUTE input	I	5.2	5.33	5.33
67	BATT	Battery detection	I	5.2	5.33	5.33
68	MODE_B	ROTARY B input	I	0.54	0.62	0.02
69	RDS_CLK	RDS clock	I	2.65	2.64	2.63
70	REM_IN	Remocon data input	I	5	5.12	5.11
71	MODE_A	ROTARY A input	I	0.6	0.59	0.06
72	CDC_STB	CD changer strobe input	I	0	0.62	0.06
73	NC	None	O	0.03	0.03	0
74	MONO	Compulsion MONO ON	O	0.03	0.03	0.03
75	AM_MODE	AM change	O	8	0.06	8.06
76	FM_MODE	FM change	O	0.08	8.06	0.08
77	N.C.	GND connection	I	0.1	0	0
78	INIT_C	Initial value C	I	0	0	0
79	INIT_B	Initial value B	I	2.5	5.15	5.14
80	INIT_A	Initial value A	I	3.23	3.25	3.24
81	VSSADC	GND connection	-	0	0	0
82	RDS_DATA	RDS data	I	0.3	0.01	2.56
83	ST	FM stereo input	I	5.3	5.25	0.34
84	SD_FM/AM	Signal detection	I	3.2	3.51	0.32
85	N.C.	GND connection	I	0	0	0
86	RESET	Reset Input	I	OFF	OFF	OFF
87	ACC	Power supply	I	5.3	5.37	5.42
88	N.C.	GND connection	I	0	0	0
89	N.C.	GND connection	I	0	0	0
90	FM/AM_IFC	FM/AM IF input	I	1.4	1.45	1.45
91	N.C.	GND connection	I	0.1	0	0
92	SUBPD	None	O	2	2.09	1.39
93	VDDPLL	Power supply of PLL	-	5	5.16	OFF
94	N.C.	None	I	0	0	0
95	OSC_FM/AM	FM/AM osc input	I	1.4	1.36	1.43
96	VSSPLL	None	-	0	0	0
97	N.C.	None	O	0.3	0.17	0.21
98	EO1	PLL phase comparison error output	O	2	2.08	1.38
99	TEST1	GND connection	I	0	0	0
100	XOUT	4.5 MHz X'tal and Connection	O	2.5	2.56	2.56

Note 1 :

Voltage measurements are with respect to ground, with a voltmeter (internal resistance : 10M ohms).

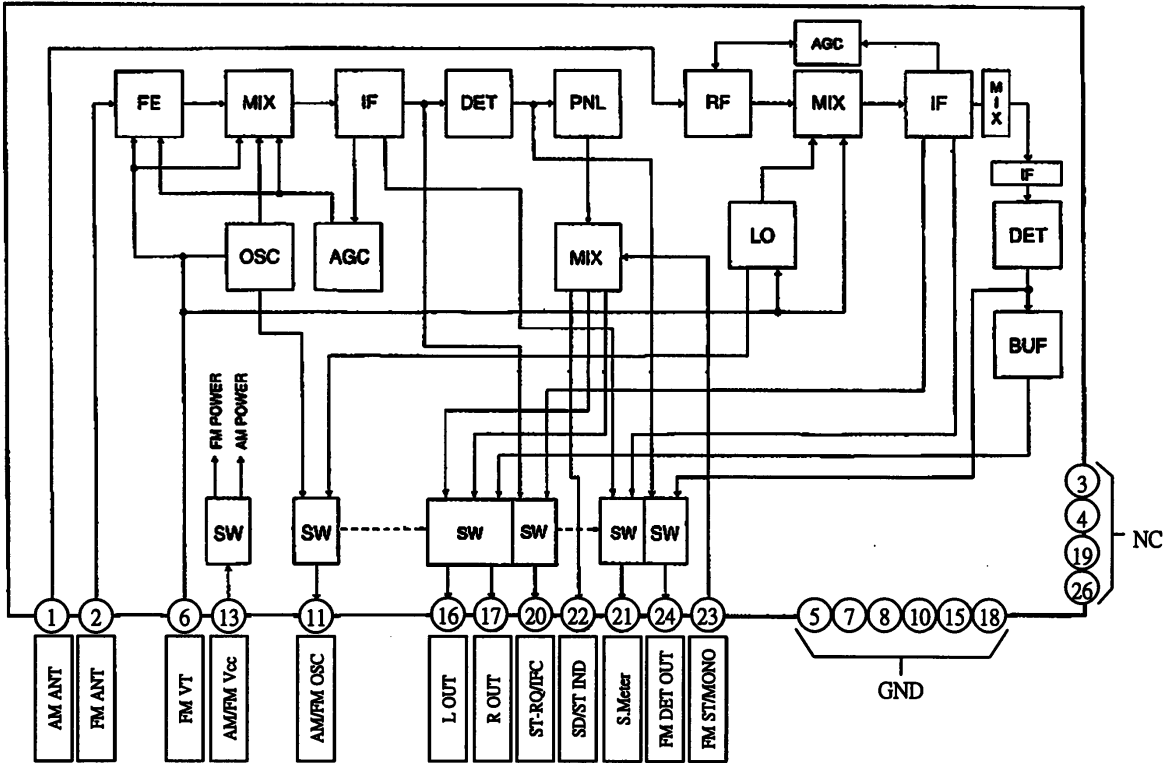
10.2. Display Block

IC901 : YEAMLC75853NW

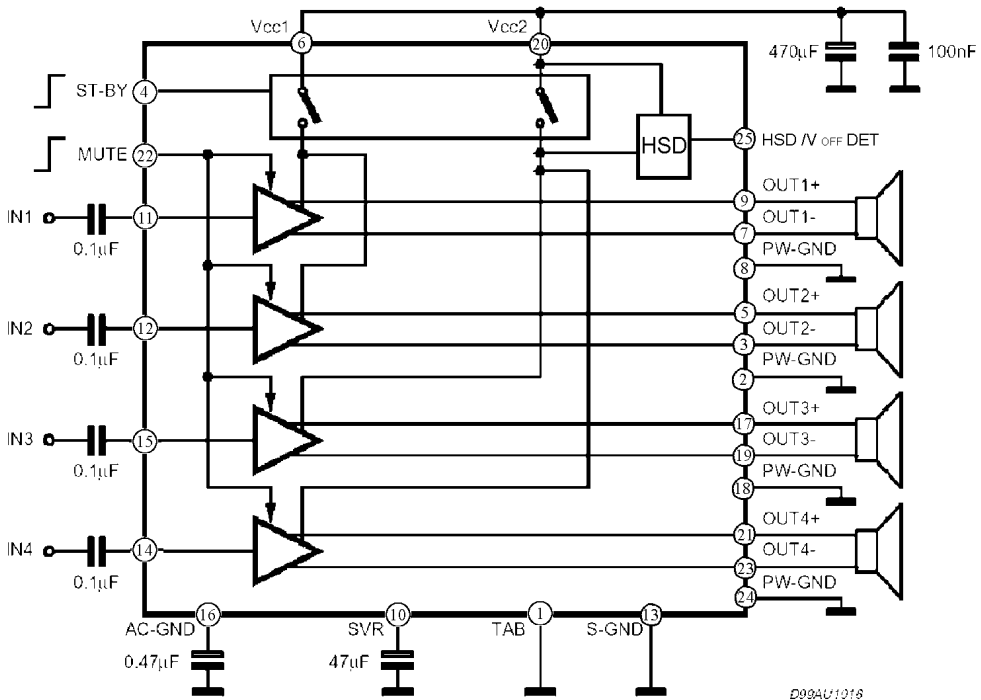
Pin No.	Port	Descriptions	I/O (V)	(V)
1-35	SEG1-35	LCD segment	O	2.5
36-39	NC	No connection	-	-
40-43	COM1-4	LCD common	O	2.5
44-49	KS1-6	Key data output	O	0.9
50-54	KI1-5	Key data input	I	0
55	TEST	(Connecting to ground)	-	0
56	VDD	+5V power supply	-	5.1
57	VDD1	Ground through capacitor	-	3.3
58	VDD2	Ground through capacitor	-	1.7
59	Vss	Ground	-	0
60	OSC	CR oscillator	-	3.9
61	DO	Key data output	O	4.4
62	CE	Chip enable	I	0
63	CLK	LCD clock	I	0
64	DI	LCD data input	I	0

11 PACKAGE AND IC BLOCK DIAGRAM

11.1. Main Block

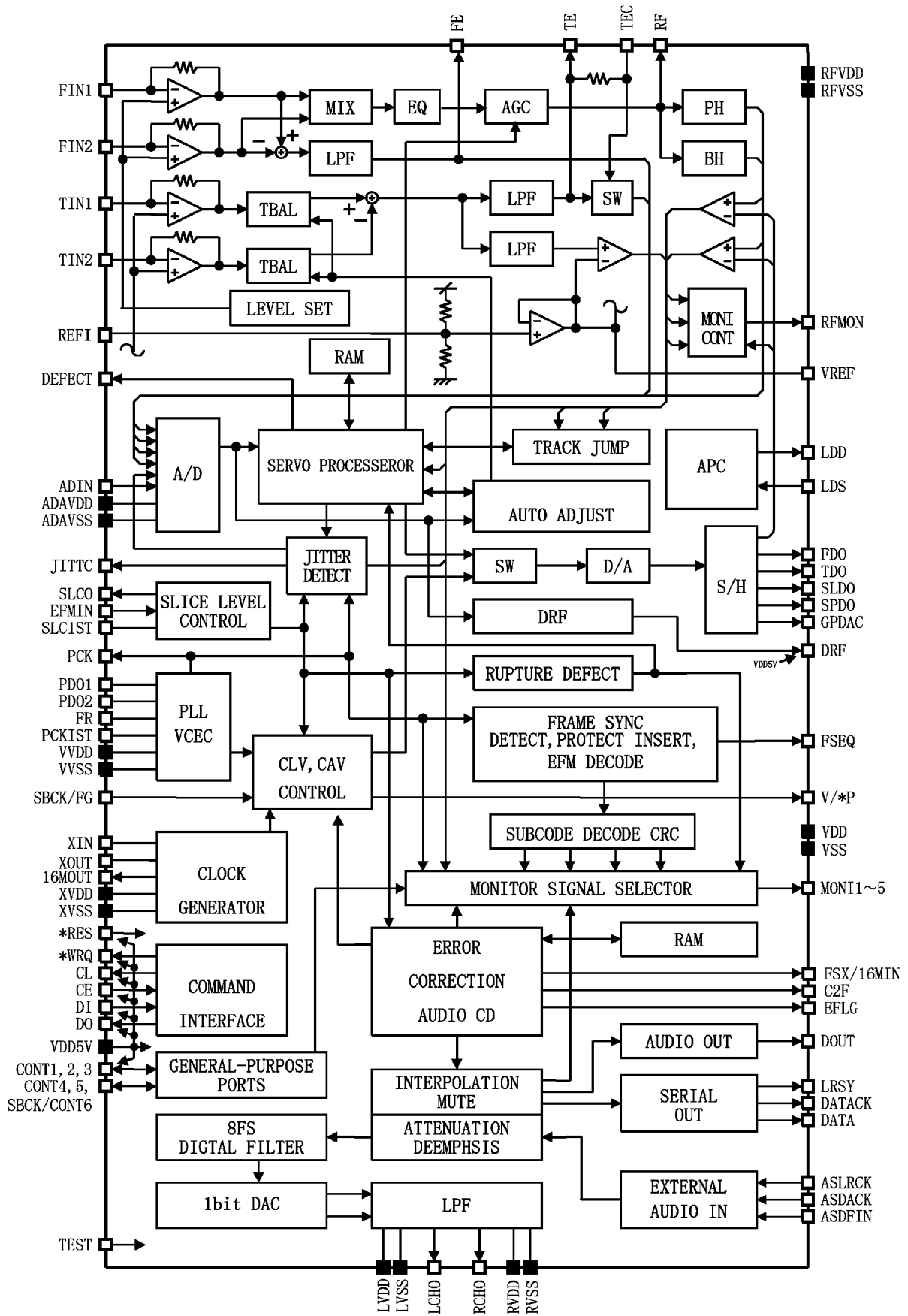


P50:FAE391-E10

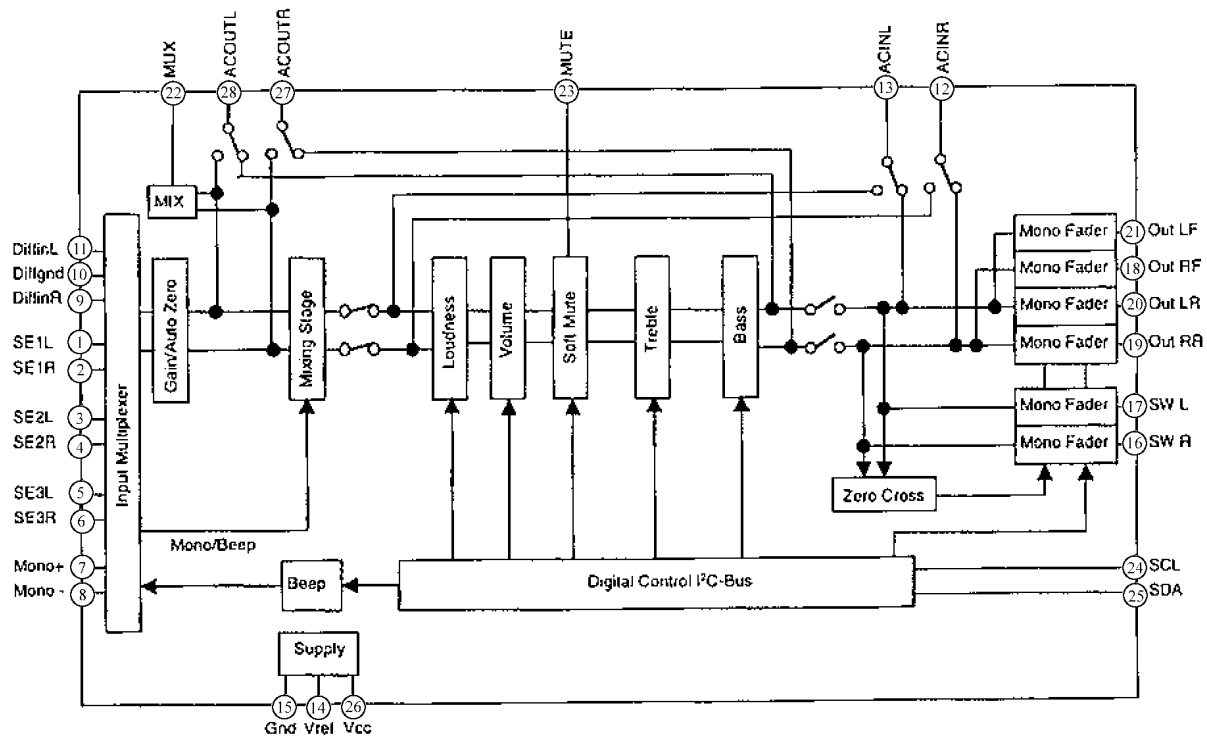


IC270 : C1EA0000042

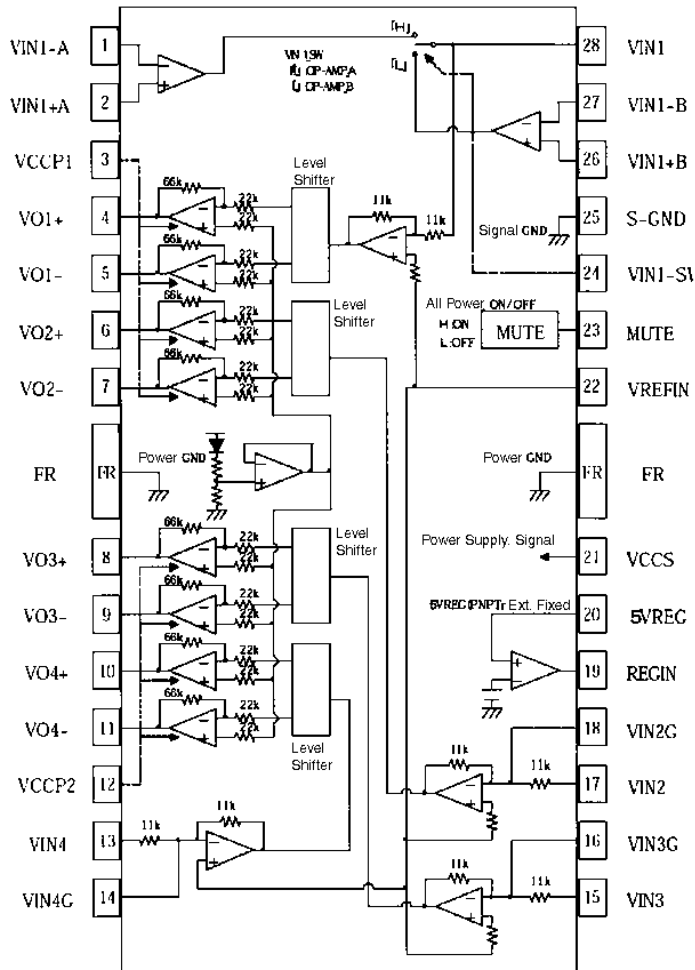
D09AU1018



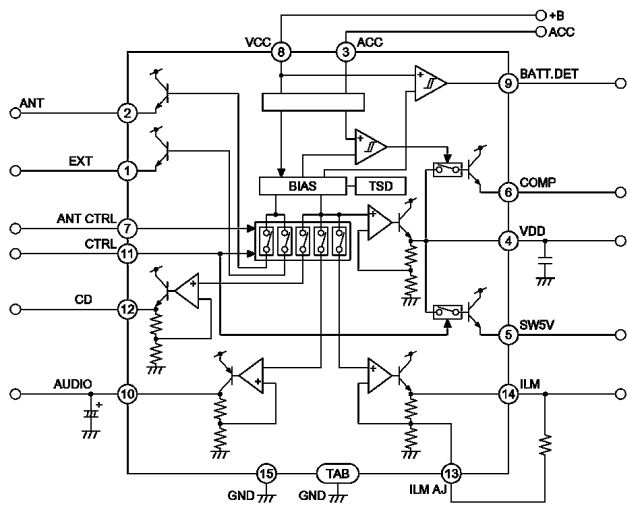
IC1 : LC78646EHUM



IC300 : C1BB0000543



IC2 : YEAMLA6242H



IC701 : C0DAZH00004

12 REPLACEMENT PARTS LIST

Note:

1. Be sure to make your orders of replacement parts according to this list.
2. Important safety notice: Component, identified by Δ mark have special characteristics important for safety. when replacing any of these components, use only manufacturer's specified parts.
3. Location keys in the remarks column indicates the general location of the parts shown in the exploded drawing, as in a load map.
4. The marking (RTL) indicates that Retention Time is limited for this item. After the discontinuation of assembly in production, the item will continue to be availability is dependent on the type of assembly, and in accordance with the laws governing part and product retention. After the end of this period, the assembly will no longer be available.
5. "T" marks in remarks column are indicated supply parts of PTW.
 - Order intake period is basically six months after the first shipment

Ref. No.	Part No.	Part Name & Description	Remarks
1. IC's and Transistors			
MAIN BLOCK [E-4C275]			
IC1	LC78646EHUM	IC	T
IC2	YEAMLA6242H	IC	T
IC300	C1BB00000543	IC	T
Q1	YEAN2SA1317T	Transistor	T
Q2	YEANB1243QRT	Transistor	T
Q50	YEANA123YKT	Transistor	T
Q53	YEAN2SC3068T	Transistor	T
Q54	YEANA123YKT	Transistor	T
Q62	YEANDTA144ST	Transistor	T
Q241	YEANCI143TKT	Transistor	T
Q242	YEANCI143TKT	Transistor	T
Q341	YEANCI143TKT	Transistor	T
Q342	YEANCI143TKT	Transistor	T
Q401	YEAN2SK583T	Transistor	T
Q630	YEANDTA144ST	Transistor	T
Q701	YEANDTA144ST	Transistor	T
Q702	YEANCI13ZST	Transistor	T
Q860	YEANB1243QRT	Transistor	T
Q861	YEANDTC144ST	Transistor	T
IC270	C1EA00000042	IC	T
IC601	LC7237819C89	IC	T
IC701	C0DAZHF00004	IC	T
P50	FAE391-E10	Tuner	T
DISPLAY BLOCK [E-4C276]			
IC901	YEAMLC75853NW	LCD DRIVER IC	T
Q901	YEANA114EKTX	Transistor	T
2. Diodes			
MAIN BLOCK [E-4C275]			
D604	YEAD1SS355T1	Diode	T
D605	YEAD1SS355T1	Diode	T
D609	ERJ6GEY0R00V	Chip 0 ohms 1/10W	T
D610	YEAD1N4148C	Diode	T
D706	YEADUDZS68BT	Diode	T
D707	YEAD1S40T	Diode	T
D710	YEAD1N4005ST	Silicon Diode	T
D712	YEAD1N4005ST	Silicon Diode	T
D713	YEAD1N4005ST	Silicon Diode	T
D714	YEAD1N4005ST	Silicon Diode	T
D961	YEAD1N4005ST	Silicon Diode	T
D962	YEAD1N4005ST	Silicon Diode	T

Ref. No.	Part No.	Part Name & Description	Remarks
D963	YEAD1N4005ST	Silicon Diode	T
D964	YEAD1N4005ST	Silicon Diode	T
D965	YEAD1N4005ST	Silicon Diode	T
D966	YEAD1N4005ST	Silicon Diode	T
D967	YEAD1N4005ST	Silicon Diode	T
D968	YEAD1N4005ST	Silicon Diode	T
D708	YEAD1N5404FT	Diode	T
DISPLAY BLOCK [E-4C276]			
D900	B3AAB0000213	LED	T
D902	MA8056LMHTX	Diode	T
D903	MA8056LMHTX	Diode	T
D904	MA8056LMHTX	Diode	T
D905	MA8056LMHTX	Diode	T
D907	MA8056LMHTX	Diode	T
D919	B3AAB0000216	LED (Red)	T
D920	B3ABB0000224	LED (Green)	T
D921	YEAD1921SRC	LED (Green)	T
D922	YEAD1921SRC	LED (Green)	T
D923	YEAD1921SRC	LED (Green)	T
D924	YEAD1921SRC	LED (Green)	T
D925	YEAD1921SRC	LED (Green)	T
D926	YEAD1921SRC	LED (Green)	T
D927	YEAD1921SRC	LED (Green)	T
D928	YEAD1921SRC	LED (Green)	T
D929	YEAD1921SRC	LED (Green)	T
D930	YEAD1921SRC	LED (Green)	T
D931	YEAD1921SRC	LED (Green)	T
3. Capacitors			
MAIN BLOCK [E-4C275]			
C1	ECEA1AKA330IV	Electrolytic 33MFD 10WV	T
C2	ECUV1H103KBN	Ceramic 0.01MFD 50WV	T
C3	ECUV1H104KBN	Ceramic 0.1MFD 50WV	T
C4	ECUV1H104KBN	Ceramic 0.1MFD 50WV	T
C5	ECUV1H102KBN	Ceramic 0.001MFD 50WV	T
C6	EEAFC0J560H	Electrolytic 56MFD 6.3WV	T
C7	ECUV1H103KBN	Ceramic 0.01MFD 50WV	T
C8	ECEA1AKA221IV	Electrolytic 220MFD 10WV	T
C9	ECUV1H104KBN	Ceramic 0.1MFD 50WV	T
C10	ECEA0JKA101IV	Electrolytic 100MFD 6.3WV	T
C11	ECUV1H104KBN	Ceramic 0.1MFD 50WV	T
C12	ECUV1H101JCN	Ceramic 100PF 50WV	T
C13	ECUV1H473KBN	Ceramic 0.047MFD 50WV	T
C14	ECUV1H472KBN	Ceramic 0.0047MFD 50WV	T
C15	ECEA1CKA100IV	Electrolytic 10MFD 16WV	T
C16	ECUV1C105KBN	Ceramic 1MFD 16WV	T
C17	ECUV1H470JCN	Ceramic 47PF 50WV	T
C18	ECUV1H104KBN	Ceramic 0.1MFD 50WV	T
C19	ECEA0JKS101IV	Electrolytic 100MFD 6.3WV	T
C20	ECEA1AKA101IV	Electrolytic 100MFD 10WV	T
C21	ECEA0JKA101IV	Electrolytic 100MFD 6.3WV	T
C22	ECEA0JKS101IV	Electrolytic 100MFD 6.3WV	T
C23	ECUV1H103KBN	Ceramic 0.01MFD 50WV	T
C24	ECEA0JKS331IV	Electrolytic 330MFD 6.3WV	T
C25	ECUV1H104KBN	Ceramic 0.1MFD 50WV	T
C33	ECEA0JKA470IV	Electrolytic 47MFD 6.3WV	T
C34	ECUV1H104KBN	Ceramic 0.1MFD 50WV	T
C35	ECUV1H473KBN	Ceramic 0.047MFD 50WV	T
C36	ECUV1C105KBN	Ceramic 1MFD 16WV	T
C37	ECUV1H104KBN	Ceramic 0.1MFD 50WV	T
C38	ECUV1H104KBN	Ceramic 0.1MFD 50WV	T
C39	ECEA0JKA101IV	Electrolytic 100MFD 6.3WV	T
C40	ECUV1H104KBN	Ceramic 0.1MFD 50WV	T
C44	ECUV1H103KBN	Ceramic 0.01MFD 50WV	T
C45	ECEA1AKA101IV	Electrolytic 100MFD 10WV	T
C46	ECEA0JKA101IV	Electrolytic 100MFD 6.3WV	T
C47	ECUV1H103KBN	Ceramic 0.01MFD 50WV	T

Ref. No.	Part No.	Part Name & Description	Remarks
C48	ECUV1H221KBN	Ceramic 220PF 50WV	T
C49	ECUV1H222KBN	Ceramic 2200PF 50WV	T
C50	ECEA1AKA101IV	Electrolytic 100MFD 10WV	T
C51	ECUV1H104KBN	Ceramic 0.1MFD 50WV	T
C52	ECUV1H103KBN	Ceramic 0.01MFD 50WV	T
C54	YECSV1CM105R	Electrolytic 1MFD 16WV	T
C61	ECUV1H470JCN	Ceramic 47PF 50WV	T
C65	ECUV1H104KBN	Ceramic 0.1MFD 50WV	T
C69	ECUV1H103KBN	Ceramic 0.01MFD 50WV	T
C72	ECEA1AKA221IV	Electrolytic 220MFD 10WV	T
C73	ECUV1H103KBN	Ceramic 0.01MFD 50WV	T
C74	ECUV1H153KBN	Ceramic 0.015MFD 50WV	T
C75	ECUV1H153KBN	Ceramic 0.015MFD 50WV	T
C76	ECUV1H223KBM	Ceramic 0.022MFD 50WV	T
C77	ECUV1H123KBN	Ceramic 0.012MFD 50WV	T
C78	ECUV1H682KBN	Ceramic 6800PF 50WV	T
C79	ECEA1AKA101IV	Electrolytic 100MFD 10WV	T
C81	ECEA1EKA220IV	Electrolytic 22MFD 25WV	T
C106	ECEA1AKA221IV	Electrolytic 220MFD 10WV	T
C107	ECUV1H103KBN	Ceramic 0.01MFD 50WV	T
C108	ECQV1H683JL2	Plastic Film 0.068MFD 50WV	T
C209	ECUV1H102KBN	Ceramic 1000PF 50WV	T
C210	ECUV1H102KBN	Ceramic 1000PF 50WV	T
C215	ECEA1CKA100IV	Electrolytic 10MFD 16WV	T
C216	ECEA1HKA2R2IV	Electrolytic 2.2MFD 50WV	T
C217	ECEA1HKA2R2IV	Electrolytic 2.2MFD 50WV	T
C218	ECEA1HKA2R2IV	Electrolytic 2.2MFD 50WV	T
C219	ECEA1HKA2R2IV	Electrolytic 2.2MFD 50WV	T
C220	ECEA1HKA2R2IV	Electrolytic 2.2MFD 50WV	T
C221	ECEA1HKA2R2IV	Electrolytic 2.2MFD 50WV	T
C249	ECUV1H222KBN	Ceramic 2200PF 50WV	T
C250	ECUV1H222KBN	Ceramic 2200PF 50WV	T
C271	ECQV1H224JL2	Plastic Film 0.22MFD 50WV	T
C272	ECQV1H224JL2	Plastic Film 0.22MFD 50WV	T
C290	ECUV1C105KBN	Ceramic 1MFD 16WV	T
C291	ECUV1C105KBN	Ceramic 1MFD 16WV	T
C294	ECUV1C105KBN	Ceramic 1MFD 16WV	T
C295	ECUV1C105KBN	Ceramic 1MFD 16WV	T
C320	ECUV1H103KBN	Ceramic 0.01MFD 50WV	T
C349	ECUV1H222KBN	Ceramic 2200PF 50WV	T
C350	ECUV1H222KBN	Ceramic 2200PF 50WV	T
C371	ECQV1H224JL2	Plastic Film 0.22MFD 50WV	T
C372	ECQV1H224JL2	Plastic Film 0.22MFD 50WV	T
C380	ECEA1HKA2R2IV	Electrolytic 2.2MFD 50WV	T
C600	ECUV1H220JCN	Ceramic 22PF 50WV	T
C601	ECUV1H220JCN	Ceramic 22PF 50WV	T
C602	ECUV1H103KBN	Ceramic 0.01MFD 50WV	T
C604	ECEA0JKA331IV	Electrolytic 330MFD 6.3WV	T
C605	ECUV1H105KBN	Ceramic 1MFD 50WV	T
C606	ECUV1H103KBN	Ceramic 0.01MFD 50WV	T
C607	ECUV1H103KBN	Ceramic 0.01MFD 50WV	T
C608	ECUV1H101JCM	Ceramic 100PF 50WV	T
C610	ECUV1H103KBN	Ceramic 0.01MFD 50WV	T
C611	ECUV1H102KBN	Ceramic 1000PF 50WV	T
C612	ECUV1H104KBN	Ceramic 0.1MFD 50WV	T
C620	ECUV1H103KBN	Ceramic 0.01MFD 50WV	T
C621	ECUV1H103KBM	Ceramic 0.01MFD 50WV	T
C622	ECUV1H103KBN	Ceramic 0.01MFD 50WV	T
C630	ECEA1HKA2R2IV	Electrolytic 2.2MFD 50WV	T
C631	ECEA1CKA100IV	Electrolytic 10MFD 16WV	T
C669	ECEA1AKA221IV	Electrolytic 220MFD 10WV	T
C702	EEAFC1A820H	Electrolytic 82MFD 10WV	T
C703	ECUV1H103KBM	Ceramic 0.01MFD 50WV	T
C704	ECUV1H103KBN	Ceramic 0.01MFD 50WV	T
C705	ECUV1H103KBN	Ceramic 0.01MFD 50WV	T
C707	ECUV1H103KBM	Ceramic 0.01MFD 50WV	T
C708	ECEA1AKA221IV	Electrolytic 220MFD 10WV	T
C709	ECEA1AKA221IV	Electrolytic 220MFD 10WV	T
C710	ECUV1H104KBN	Ceramic 0.1MFD 50WV	T
C713	ECUV1H103KBN	Ceramic 0.01MFD 50WV	T
C714	ECUV1H103KBN	Ceramic 0.01MFD 50WV	T
C715	ECUV1H103KBN	Ceramic 0.01MFD 50WV	T
C716	ECUV1H103KBN	Ceramic 0.01MFD 50WV	T

Ref. No.	Part No.	Part Name & Description	Remarks
C717	ECUV1H103KBM	Ceramic 0.01MFD 50WV	T
C718	ECUV1H104KBN	Ceramic 0.1MFD 50WV	T
C721	ECEA1HKA2R2IV	Electrolytic 2.2MFD 50WV	T
C722	ECEA1HKA010IV	Electrolytic 1MFD 50WV	T
C727	ECEA1CKA101IV	Electrolytic 100MFD 16WV	T
C802	ECEA1AKA221IV	Electrolytic 220MFD 10WV	T
XL01	YEXL16M9X54A	Ceramic Filter	T
Z52	1608SGXATR1	Surge Protector	T
C603	ECA0JM102J	Electrolytic 1000MFD 6.3WV	T
C706	ECA1CM102LB	Electrolytic 1000MFD 16WV	T
C720	ECA1CPX222L	Electrolytic 2200MFD 16WV	T
DISPLAY BLOCK [E-4C276]			
C901	ECUV1H103KBN	Ceramic 0.01MFD 50WV	T
C902	ECUV1H103KBN	Ceramic 0.01MFD 50WV	T
C903	ECUV1H821KBN	Ceramic 820PF 50WV	T
C908	ECUV1H104KBN	Ceramic 0.1MFD 50WV	T
C909	ECUV1H103KBN	Ceramic 0.01MFD 50WV	T
CD SERVO BLOCK [E-4C278]			
C1	ECUV1H104KBN	Ceramic 0.1MFD 50WV	T
4. Resistors			
MAIN BLOCK [E-4C275]			
J4	ERJ6GEY0R00V	Chip 0 ohms 1/10W	T
J13	ERJ8GX0R00V	Chip 0 ohms 1/8W	T
J18	ERJ8GX0R00V	Chip 0 ohms 1/8W	T
J19	ERJ8GX0R00V	Chip 0 ohms 1/8W	T
J21	ERJ8GX0R00V	Chip 0 ohms 1/8W	T
J28	ERJ6GEY0R00V	Chip 0 ohms 1/10W	T
J29	ERJ6GEY0R00V	Chip 0 ohms 1/10W	T
J60	ERJ8GX0R00V	Chip 0 ohms 1/8W	T
J61	ERJ6GEY0R00V	Chip 0 ohms 1/10W	T
J62	ERJ6GEY0R00V	Chip 0 ohms 1/10W	T
J200	ERJ8GX0R00V	Chip 0 ohms 1/8W	T
J208	ERJ8GX0R00V	Chip 0 ohms 1/8W	T
J210	ERJ8GX0R00V	Chip 0 ohms 1/8W	T
J217	ERJ8GX0R00V	Chip 0 ohms 1/8W	T
J226	ERJ8GX0R00V	Chip 0 ohms 1/8W	T
J230	ERJ8GX0R00V	Chip 0 ohms 1/8W	T
J232	ERJ8GX0R00V	Chip 0 ohms 1/8W	T
J235	ERJ8GX0R00V	Chip 0 ohms 1/8W	T
J244	ERJ8GX0R00V	Chip 0 ohms 1/8W	T
J246	ERJ6GEY0R00V	Chip 0 ohms 1/10W	T
J247	ERJ8GX0R00V	Chip 0 ohms 1/8W	T
J248	ERJ8GX0R00V	Chip 0 ohms 1/8W	T
J260	ERJ6GEY0R00V	Chip 0 ohms 1/10W	T
J269	ERJ8GX0R00V	Chip 0 ohms 1/8W	T
J270	ERJ8GX0R00V	Chip 0 ohms 1/8W	T
J272	ERJ6GEY0R00V	Chip 0 ohms 1/10W	T
J273	ERJ8GX0R00V	Chip 0 ohms 1/8W	T
J274	ERJ8GX0R00V	Chip 0 ohms 1/8W	T
J276	ERJ8GX0R00V	Chip 0 ohms 1/8W	T
J277	ERJ6GEY0R00V	Chip 0 ohms 1/10W	T
J278	ERJ8GX0R00V	Chip 0 ohms 1/8W	T
J281	ERJ8GX0R00V	Chip 0 ohms 1/8W	T
J282	ERJ6GEY0R00V	Chip 0 ohms 1/10W	T
J283	ERJ8GX0R00V	Chip 0 ohms 1/8W	T
J284	ERJ8GX0R00V	Chip 0 ohms 1/8W	T
J285	ERJ8GX0R00V	Chip 0 ohms 1/8W	T
J286	ERJ8GX0R00V	Chip 0 ohms 1/8W	T
J287	ERJ6GEY0R00V	Chip 0 ohms 1/10W	T
J288	ERJ8GX0R00V	Chip 0 ohms 1/8W	T
J293	ERJ8GX0R00V	Chip 0 ohms 1/8W	T
J294	ERJ6GEY0R00V	Chip 0 ohms 1/10W	T
J295	ERJ6GEY0R00V	Chip 0 ohms 1/10W	T
J297	ERJ8GX0R00V	Chip 0 ohms 1/8W	T
J300	ERJ8GX0R00V	Chip 0 ohms 1/8W	T
J307	ERJ6GEY0R00V	Chip 0 ohms 1/10W	T
J308	ERJ6GEY0R00V	Chip 0 ohms 1/10W	T

Ref. No.	Part No.	Part Name & Description	Remarks
J309	ERJ6GEY0R00V	Chip 0 ohms 1/10W	T
J312	ERJ6GEY0R00V	Chip 0 ohms 1/10W	T
J317	ERJ8GX0R00V	Chip 0 ohms 1/8W	T
J325	ERJ6GEY0R00V	Chip 0 ohms 1/10W	T
J331	ERJ8GX0R00V	Chip 0 ohms 1/8W	T
J332	ERJ8GX0R00V	Chip 0 ohms 1/8W	T
J333	ERJ8GX0R00V	Chip 0 ohms 1/8W	T
J334	ERJ8GX0R00V	Chip 0 ohms 1/8W	T
J335	ERJ8GX0R00V	Chip 0 ohms 1/8W	T
J336	ERJ8GX0R00V	Chip 0 ohms 1/8W	T
J337	ERJ8GX0R00V	Chip 0 ohms 1/8W	T
J340	ERJ6GEY0R00V	Chip 0 ohms 1/10W	T
J341	ERJ6GEY0R00V	Chip 0 ohms 1/10W	T
J342	ERJ8GX0R00V	Chip 0 ohms 1/8W	T
J343	ERJ8GX0R00V	Chip 0 ohms 1/8W	T
J344	ERJ8GX0R00V	Chip 0 ohms 1/8W	T
J345	ERJ8GX0R00V	Chip 0 ohms 1/8W	T
J346	ERJ6GEY0R00V	Chip 0 ohms 1/10W	T
J348	ERJ8GX0R00V	Chip 0 ohms 1/8W	T
J349	ERJ6GEY0R00V	Chip 0 ohms 1/10W	T
J350	ERJ8GX0R00V	Chip 0 ohms 1/8W	T
J351	ERJ8GX0R00V	Chip 0 ohms 1/8W	T
J352	ERJ8GX0R00V	Chip 0 ohms 1/8W	T
J400	ERJ6GEYJ221V	Chip 220 ohms 1/8W	T
J401	ERJ6GEY0R00V	Chip 0 ohms 1/10W	T
J502	ERJ6GEY0R00V	Chip 0 ohms 1/10W	T
J601	ERJ8GX0R00V	Chip 0 ohms 1/8W	T
J604	ERJ8GX0R00V	Chip 0 ohms 1/8W	T
J607	ERJ6GEY0R00V	Chip 0 ohms 1/10W	T
J610	ERJ8GX0R00V	Chip 0 ohms 1/8W	T
J611	ERJ6GEY0R00V	Chip 0 ohms 1/10W	T
J613	ERJ8GX0R00V	Chip 0 ohms 1/8W	T
J616	ERJ8GX0R00V	Chip 0 ohms 1/8W	T
J617	ERJ6GEY0R00V	Chip 0 ohms 1/10W	T
J618	ERJ6GEY0R00V	Chip 0 ohms 1/10W	T
J620	ERJ8GX0R00V	Chip 0 ohms 1/8W	T
J701	ERJ8GX0R00V	Chip 0 ohms 1/8W	T
J802	ERJ8GX0R00V	Chip 0 ohms 1/8W	T
J804	ERJ8GX0R00V	Chip 0 ohms 1/8W	T
J806	ERJ8GX0R00V	Chip 0 ohms 1/8W	T
J807	ERJ8GX0R00V	Chip 0 ohms 1/8W	T
J808	ERJ8GX0R00V	Chip 0 ohms 1/8W	T
J809	ERJ8GX0R00V	Chip 0 ohms 1/8W	T
J810	ERJ8GX0R00V	Chip 0 ohms 1/8W	T
J811	ERJ8GX0R00V	Chip 0 ohms 1/8W	T
J817	ERJ8GX0R00V	Chip 0 ohms 1/8W	T
J818	ERJ8GX0R00V	Chip 0 ohms 1/8W	T
J819	ERJ8GX0R00V	Chip 0 ohms 1/8W	T
J820	ERJ8GX0R00V	Chip 0 ohms 1/8W	T
R1	ERD25TJ823T	Carbon 82k ohms 1/4W	T
R2	ERJ6GEYJ102V	Chip 1k ohms 1/10W	T
R3	ERD25TJ183T	Carbon18k ohms 1/4W	T
R4	ERD25TJ183T	Carbon18k ohms 1/4W	T
R5	ERJ6GEYJ102V	Chip 1k ohms 1/10W	T
R6	ERD25TJ823T	Carbon 82k ohms 1/4W	T
R7	ERD25TJ470T	Carbon 47 ohms 1/4W	T
R8	ERJ6GEYJ3R3V	Chip 3.3 ohms 1/8W	T
R9	ERJ6GEYJ103V	Chip 10k ohms 1/10W	T
R10	ERJ6GEYJ331V	Chip 330 ohms 1/10W	T
R11	ERJ6GEYJ273V	Chip 27k ohms 1/10W	T
R12	ERJ6GEYJ622V	Chip 6.2k ohms 1/8W	T
R13	ERJ6GEY0R00V	Chip 0 ohms 1/10W	T
R21	ERJ8GEYJ820V	Chip 82 ohms 1/4W	T
R22	ERJ6GEYJ681V	Chip 680 ohms 1/10W	T
R23	ERJ6GEYJ681V	Chip 680 ohms 1/10W	T
R24	ERJ6GEYJ123V	Chip 12k ohms 1/10W	T
R25	ERJ6GEYJ122V	Chip 1.2k ohms 1/10W	T
R26	ERJ8GEYJ820V	Chip 82 ohms 1/4W	T
R36	ERJ6GEYJ272V	Chip 2.7k ohms 1/10W	T
R40	ERD25TJ103T	Carbon 10k ohms 1/4W	T
R41	ERJ6GEYJ622V	Chip 6.2k ohms 1/8W	T
R42	ERJ6GEYJ333V	Chip 33k ohms 1/10W	T
R43	ERJ6GEYJ333V	Chip 33k ohms 1/10W	T

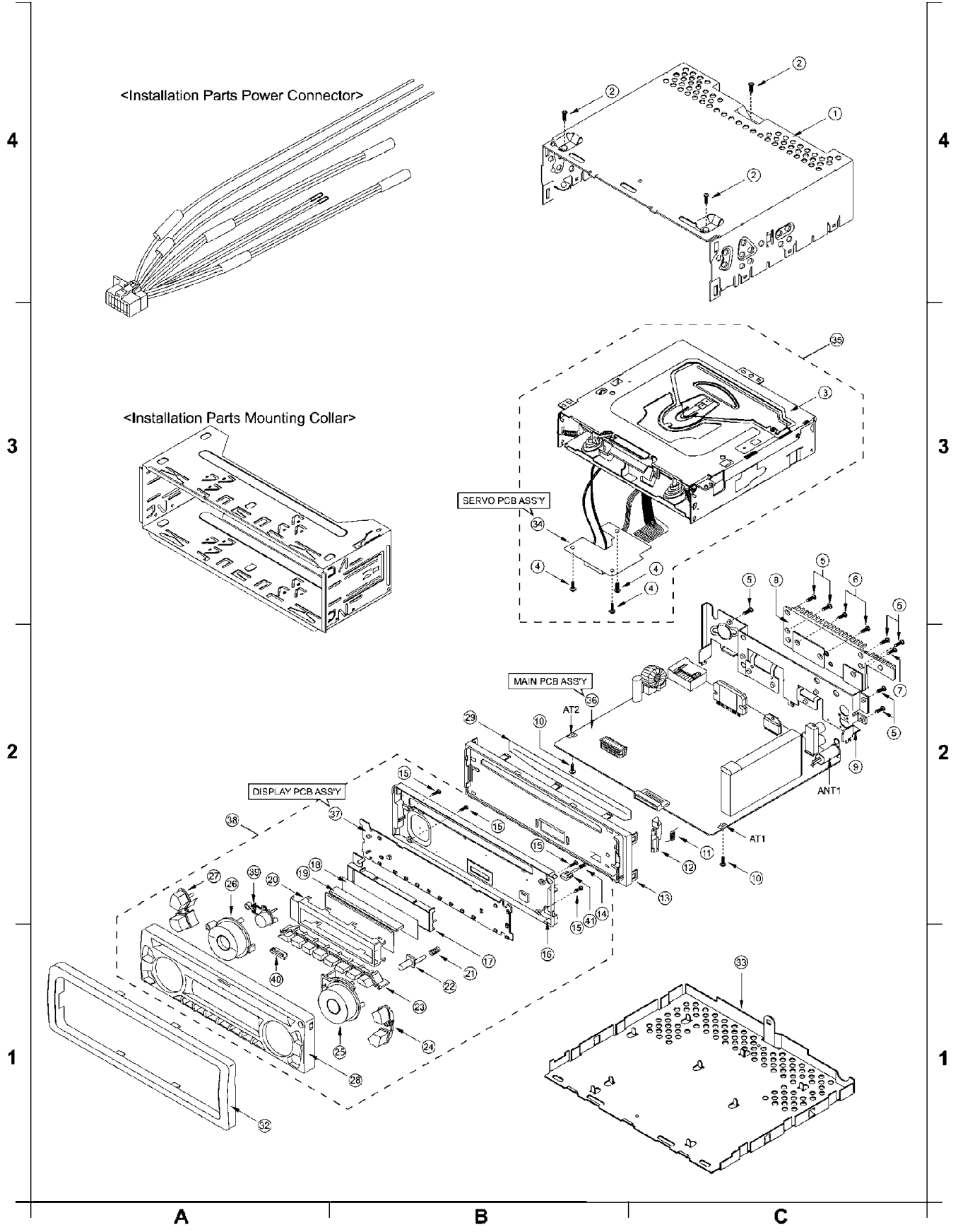
Ref. No.	Part No.	Part Name & Description	Remarks
R48	ERD25TJ223T	Carbon 22k ohms 1/4W	T
R49	ERD25TJ103T	Carbon 10k ohms 1/4W	T
R50	ERJ8GEYJ223V	Chip 22k ohms 1/8W	T
R51	ERJ6GEYJ682V	Chip 6.8k ohms 1/10W	T
R52	ERD25TJ223T	Carbon 22k ohms 1/4W	T
R59	ERDS2TJ102T	Carbon 1k ohms 1/4W	T
R60	ERJ8GEYJ5R6V	Chip 5.6 ohms 1/4W	T
R61	ERJ6GEY0R00V	Chip 0 ohms 1/10W	T
R62	ERJ6GEYJ101V	Chip 100 ohms 1/10W	T
R66	ERJ6GEYJ393V	Chip 39k ohms 1/10W	T
R67	ERJ6GEYJ123V	Chip 12k ohms 1/10W	T
R68	ERJ6GEYJ123V	Chip 12k ohms 1/10W	T
R69	ERJ8GEYJ221V	Chip 220 ohms 1/8W	T
R70	ERJ6GEYJ102V	Chip 1k ohms 1/10W	T
R102	ERJ8GEYJ511V	Chip 510 ohms 1/8W	T
R103	ERJ6GEYJ512V	Chip 5.1k ohms 1/10W	T
R104	ERJ6GEYJ331V	Chip 330 ohms 1/10W	T
R105	ERDS2TJ100T	Carbon 10 ohms 1/4W	T
R208	ERD25TJ102T	Carbon 1k ohms 1/4W	T
R209	ERD25TJ102T	Carbon 1k ohms 1/4W	T
R241	ERJ6GEYJ103V	Chip 10k ohms 1/10W	T
R242	ERJ6GEYJ103V	Chip 10k ohms 1/10W	T
R261	ERJ6GEYJ181V	Chip 180 ohms 1/10W	T
R262	ERJ8GEYJ181V	Chip 180 ohms 1/8W	T
R271	ERJ6GEYJ561V	Chip 560 ohms 1/10W	T
R272	ERJ6GEYJ561V	Chip 560 ohms 1/10W	T
R280	ERD25TJ682T	Carbon 6.8k ohms 1/4W	T
R284	ERD25TJ682T	Carbon 6.8k ohms 1/4W	T
R341	ERJ6GEYJ103V	Chip 10k ohms 1/10W	T
R342	ERJ6GEYJ103V	Chip 10k ohms 1/10W	T
R361	ERJ8GEYJ181V	Chip 180 ohms 1/8W	T
R362	ERJ6GEYJ181V	Chip 180 ohms 1/10W	T
R371	ERJ6GEYJ561V	Chip 560 ohms 1/10W	T
R372	ERJ6GEYJ561V	Chip 560 ohms 1/10W	T
R600	ERJ6GEYJ473V	Chip 47k ohms 1/10W	T
R601	ERJ6GEYJ473V	Chip 47k ohms 1/10W	T
R602	ERJ6GEYJ473V	Chip 47k ohms 1/10W	T
R604	ERJ6GEYJ473V	Chip 47k ohms 1/10W	T
R606	ERDS2TJ103T	Carbon 10k ohms 1/4W	T
R607	ERDS2TJ103T	Carbon 10k ohms 1/4W	T
R608	ERJ6GEYJ104V	Chip 100k ohms 1/10W	T
R609	ERD25TJ102T	Carbon 1k ohms 1/4W	T
R610	ERD25TJ102T	Carbon 1k ohms 1/4W	T
R611	ERDS2TJ102T	Carbon 1k ohms 1/4W	T
R612	ERD25TJ102T	Carbon 1k ohms 1/4W	T
R613	ERDS2TJ102T	Carbon 1k ohms 1/4W	T
R616	ERD25TJ102T	Carbon 1k ohms 1/4W	T
R618	ERJ6GEYJ103V	Chip 10k ohms 1/10W	T
R619	ERJ8GEYJ102V	Chip 1k ohms 1/8W	T
R622	ERDS2TJ473T	Carbon 47k ohms 1/4W	T
R624	ERJ8GEYJ333V	Chip 33k ohms 1/8W	T
R625	ERDS2TJ102T	Carbon 1k ohms 1/4W	T
R626	ERJ6GEYJ473V	Chip 47k ohms 1/10W	T
R627	ERJ6GEYJ473V	Chip 47k ohms 1/10W	T
R628	ERJ8GEYJ473V	Chip 47k ohms 1/8W	T
R629	ERJ6GEYJ473V	Chip 47k ohms 1/10W	T
R630	ERJ6GEYJ271V	Chip 270 ohms 1/10W	T
R634	ERDS2TJ682T	Carbon 6.8k ohms 1/4W	T
R636	ERJ6GEYJ223V	Chip 22k ohms 1/10W	T
R637	ERJ6GEYJ473V	Chip 47k ohms 1/10W	T
R638	ERJ6GEYJ272V	Chip 2.7k ohms 1/10W	T
R640	YER14MNR102J	Chip 1k ohms 1/16W	T
R641	YER14MNR102J	Chip 1k ohms 1/16W	T
R642	YER14MNR102J	Chip 1k ohms 1/16W	T
R653	ERJ8GEYJ473V	Chip 47k ohms 1/8W	T
R654	ERJ8GEYJ473V	Chip 47k ohms 1/8W	T
R682	ERJ6GEYJ104V	Chip 100k ohms 1/10W	T
R701	ERJ6GEYJ473V	Chip 47k ohms 1/10W	T
R702	ERJ6GEYJ153V	Chip 15k ohms 1/10W	T
R703	ERD25TJ102T	Carbon 1k ohms 1/4W	T
R705	ERJ6GEYJ333V	Chip 33k ohms 1/10W	T
R706	ERJ6GEYJ473V	Chip 47k ohms 1/10W	T
R709	ERJ12YJ332H	Carbon 3.3k ohms 1/2W	T

Ref. No.	Part No.	Part Name & Description	Remarks
R710	ERJ6GEYJ332V	Chip 3.6k ohms 1/10W	T
R711	ERDS2TJ104T	Carbon 100k ohms 1/4W	T
R712	ERJ6GEYJ104V	Chip 100k ohms 1/10W	T
R713	ERJ8GEYJ223V	Chip 22k ohms 1/8W	T
R860	ERJ6GEYJ102V	Chip 1k ohms 1/10W	T
R861	ERJ6GEYJ473V	Chip 47k ohms 1/10W	T
R992	ERJ6GEYJ103V	Chip 10k ohms 1/10W	T
R993	ERJ6GEYJ163V	Chip 16k ohms 1/10W	T
DISPLAY BLOCK [E-4C276]			
R901	ERJ6GEYJ272V	Chip 2.7k ohms 1/10W	T
R902	ERJ6GEYJ683V	Carbon 68k ohms 1/10W	T
R903	ERJ6GEYJ102V	Chip 1k ohms 1/10W	T
R904	ERJ6GEYJ102V	Chip 1k ohms 1/10W	T
R905	ERJ6GEYJ102V	Chip 1k ohms 1/10W	T
R906	ERJ6GEYJ122V	Chip 1.2k ohms 1/10W	T
R908	ERJ6GEYJ471V	Chip 470 ohms 1/10W	T
R909	ERJ6GEYJ102V	Chip 1k ohms 1/10W	T
R910	ERJ6GEYJ4R7V	Chip 4.7 ohms 1/10W	T
R921	ERJ6GEYJ561V	Chip 560 ohms 1/10W	T
R922	ERJ6GEYJ821V	Chip 820 ohms 1/8W	T
R923	ERJ6GEYJ561V	Chip 560 ohms 1/10W	T
R924	ERJ6GEYJ561V	Chip 560 ohms 1/10W	T
R925	ERJ6GEYJ241V	Chip 240 ohms 1/8W	T
CD SERVO BLOCK [E-4C278]			
J30	ERJ6GEY0R00V	Chip 0 ohms 1/10W	T
J31	ERJ6GEY0R00V	Chip 0 ohms 1/10W	T
J32	ERJ8GX0R00V	Chip 0 ohms 1/8W	T
J33	ERJ8GX0R00V	Chip 0 ohms 1/8W	T
J34	ERJ8GX0R00V	Chip 0 ohms 1/8W	T
J35	ERJ8GX0R00V	Chip 0 ohms 1/8W	T
J36	ERJ8GX0R00V	Chip 0 ohms 1/8W	T
5. Connectors			
MAIN BLOCK [E-4C275]			
CN601	YEAE012475	Connector	T
CN602	K1KA22A00001	Connector	T
CN700	K1FA116B0028	Connector	T
CN900	YEAER140002	Connector	T
CN901	YEAE012476	Connector	T
CN1	K1KB22A00025	Connector	T
CN2	YEAE4CCN057	Connector	T
6. Electric Parts			
SWITCHES			
SW901	KOH1BA000445	Tack Swich	T
SW902	KOH1BA000445	Tack Swich	T
SW903	KOH1BA000445	Tack Swich	T
SW904	KOH1BA000445	Tack Swich	T
SW905	KOH1BA000445	Tack Swich	T
SW906	KOH1BA000445	Tack Swich	T
SW907	KOH1BA000445	Tack Swich	T
SW908	KOH1BA000445	Tack Swich	T
SW909	KOH1BA000445	Tack Swich	T
SW910	KOH1BA000445	Tack Swich	T
SW911	KOH1BA000445	Tack Swich	T
SW912	KOH1BA000445	Tack Swich	T
SW913	KOH1BA000445	Tack Swich	T
SW914	KOH1BA000445	Tack Swich	T
SW915	KOH1BA000445	Tack Swich	T
SW919	KOH1BA000445	Tack Swich	T
SW920	KOH1BA000445	Tack Swich	T
SW921	KOH1BA000445	Tack Swich	T
SW924	KOH1BA000445	Tack Swich	T
CRYSTAL			
XL601	YEXL4C45T2	Crystal	T
COILS			
L2	YELT02C221KT	Axial Coil	T

Ref. No.	Part No.	Part Name & Description	Remarks
L50	YELT02C150KT	Axial Coil	T
L52	YELT02C8R2KT	Axial Coil	T
L61	NLV32TR56J	Coil	T
L801	YELT03N100JT	Coil	T
L700	YETQ024C065V	Choke Coil	T
L901	YELT03N101JT	Coil	T
LCD			
LCD901	L5ADCJB00001	LCD	T
7. Accessories			
INSTALLATION PARTS			
	FX0214C384ZA	Mounting Collar	T
	YEAJ024C115ZA	Power Connector	T
	YFC024C061ZA	Unit Case	T
8. Mechanical Parts			
MISCELLANEOUS			
ANT1	YAA104C700ZA	Ant Jack	T(2C)
AT1	YAT034C009ZA	Terminal	T(2C)
AT2	YAT034C009ZA	Terminal	T(2B)
1	YFA034C052ZA	Upper Cover	T(4C)
2	XTB26+5FFN	Screw	T(4C)
3	TN-2001-1064	CD Deck	T(3C)
4	XTW2+5FFN	Screw	T(4C)
5	XTB3+6FFN	Screw	T(3C)
6	YEJT034C019N	Screw	T(3C)
7	YJS064C002FN	Screw	T(2C)
8	YFF014C052ZA	Heat Sink	T(3C)
9	YFA084C056ZA	Rear Cover	T(2C)
10	YEJT034C001N	Screw	T(2C)
11	FX0052056	Spring	T(2C)
12	YEFX9991682A	Release Hook	T(2C)
13	YFC024C659ZA	ESC Holder(CD)	T(2C)
14	YGF0052057	Push Button	T(2B)
15	XTN2+8GFZ	Screw	T(2B)
16	YFC024C658ZA	ESC Rear Cover	T(1B)
17	YEFX0012300	Back Light Ass'y	T(1B)
18	YFV024C104ZA	Sheet	T(2B)
19	YFS014C065YA	Rubber Gum	T(2A)
20	FX0214C350XA	LED Bracket	T(2A)
21	FX0054C067ZA	Spring	T(1B)
22	YFE134C419ZA	Button (RELEASE)	T(1B)
23	YFE134C484ZA	Button (PRESET)	T(1B)
24	YFE134C486ZA	Button(EJ/DISP)	T(1B)
25	YFE134C488ZA	Button(TUNER/TRACK)	T(1B)
26	YFE134C490ZA	Button(Vol)	T(2A)
27	YFE134C485ZA	Button(BAND/SRC)	T(2A)
28	YFC034C011ZA	ESC Printing	T(2A)
29	YEF02302	Dust Felt	T(2B)
32	YFC054C079ZA	Trium Plate	T(1A)
33	YFA054C042ZA	Under Cover	T(1C)
34	APCB278A0-TY	Servo PCB Assy	T(3B)/R TL
35	AADK278A1-TY	Deck Assy	T(3C)/R TL
36	AAPB275F0-TY	Main PCB Assy	T(2B)/R TL
37	APCB276D0-TY	Key PCB Assy	T(2B)/R TL
38	ESCC1001W1TY	ESC Unit Assy	T(2A)/R TL
39	YFE134C489ZA	Button(SEL)	T(2A)
40	YFX014C083ZA	Panel Light (CD)	T(1A)
41	YFE134C491ZA	Button(PUSH)	T(1B)

13 EXPLODED VIEW (Unit)

■ Numbers in ○ are indicated REF.No.in the REPLACEMENT PARTS LIST



14 CD PLAYER MECHANICAL PARTS LIST

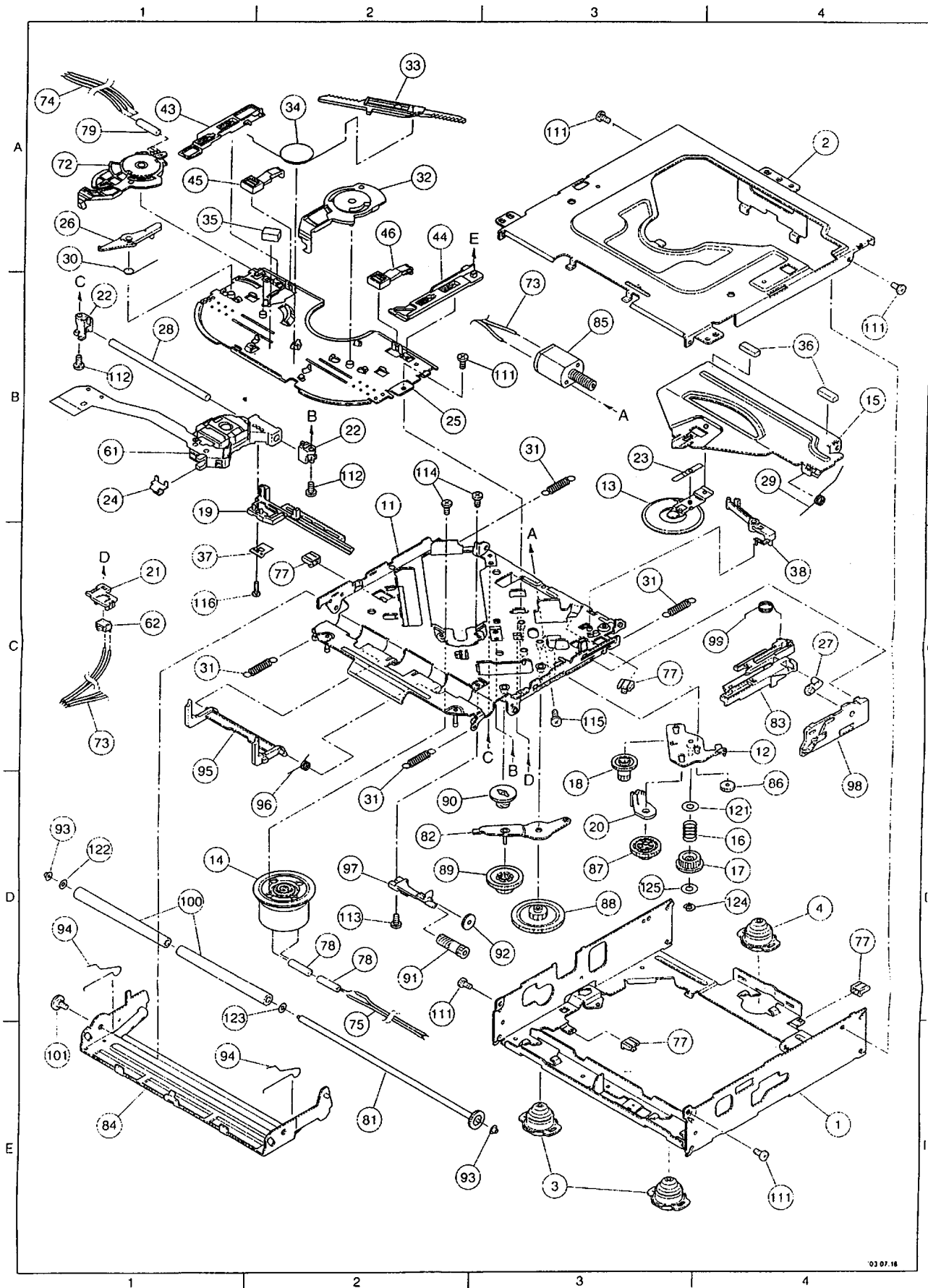
Note:

1. Be sure to make your orders of replacement parts according to this list.
2. Important safety notice: Component, identified by Δ mark have special characteristics important for safety. when replacing any of these components, use only manufacturer's specified parts.
3. Location keys in the remarks column indicates the general location of the parts shown in the exploded drawing, as in a load map.
4. The marking (RTL) indicates that Retention Time is limited for this item. After the discontinuation of assembly in production, the item will continue to be availability is dependent on the type of assembly, and in accordance with the laws governing part and product retention. At the end of this period, the assembly will no longer be available.
5. "T" marks in remarks column are indicated supply parts of PTW.
 - Order intake period is basically six months after the first shipment
 - * "N" marks in remarks column are indicated supply parts as not available and to order the assembly

Ref. No.	Part No.	Part Name & Description	Remarks
1	3032 01 36	FRAME (M2)	N(E-4)
2	3032 01 37	TOP COVER (M2)	N(A-4)
3	3032 01 15	DAMPER F	N(E-3)
4	3032 01 16	DAMPER R	N(D-4)
11	3032 05 508	CHASSIS RIVET ASS'Y(M2)	N(B-2)
12	3032 05 504	CHASSIS PLTAE RIVET ASS'Y(M)	N(C-4)
13	3032 05 301	CLAMPER ASS'Y	N(B-3)
14	3032 05 307	SPINDLE MOTOR (M) ASS'Y	T(D-1)
15	3032 05 56	CLAMPER ARM M	N(B-4)
16	3032 05 03	CHANGE GEAR SPRING	N(D-4)
17	3032 05 05	CHANGE GEAR 2	N(D-4)
18	3032 05 06	FEED GEAR	N(D-3)
19	3032 05 51	FEED RACK M	N(B-1)
20	3032 05 53	CHANGE LOCK LEVER M	N(D-3)
21	3032 05 57	FEED SW HOLDER (M)	N(C-1)
22	3032 05 54	PU SHAFT HOLDER (M)	N(B-1); N(B-2)
23	3032 05 13	CLAMPER SUB SPRING	N(B-3)
24	3032 05 58	FD SUB HOLDER M	N(B-1)
25	3032 05 65	TOP PLATE (M2)	N(B-2)
26	3032 05 19	SELECT LOCK ARM	N(A-1)
27	3032 05 21	SLIDE HOOK	N(C-4)
28	3032 05 55	PU SHAFT M	N(B-1)
29	3032 05 59	CLAMPER ARM SPRING M	N(B-4)
30	3032 05 26	SELECT LOCK ARM SPRING	N(A-1)
31	3032 05 62	SUSPENSION SPRING MS	N(B-3); N(C-1); N(C-4); N(D-2)
32	3032 05 64	SELECT ARM R (M2)	N(A-2)
33	3032 05 30	LINK PLATE	N(A-2)
34	3032 05 36	LINK PLATE SPRING S	N(A-2)
35	3032 05 23	CUSHION F	N(A-1)
36	3032 05 24	CUSHION R	N(B-4)
37	3032 05 63	FEED SPR PLATE M	N(C-2)
38	3032 05 61	TRIGGER ARM M	N(C-4)
43	3032 08 03	SELECT PLATE L	N(A-1)
44	3032 08 04	SELECT PLATE R	N(A-2)
45	3032 08 05	SELECT PIECE L	N(A-1)
46	3032 08 06	SELECT PIECE R	N(A-2)
61	6904 16 06	PICK UP RD-DAP005-TN	T(B-1)
62	6418 04 07	DET SW ESE 22MH55	N(C-1)
72	3032 10 02	MODE SW	T(A-1)
73	3032 10 51	LD WIRE MN	N(B-3); N(C-1)

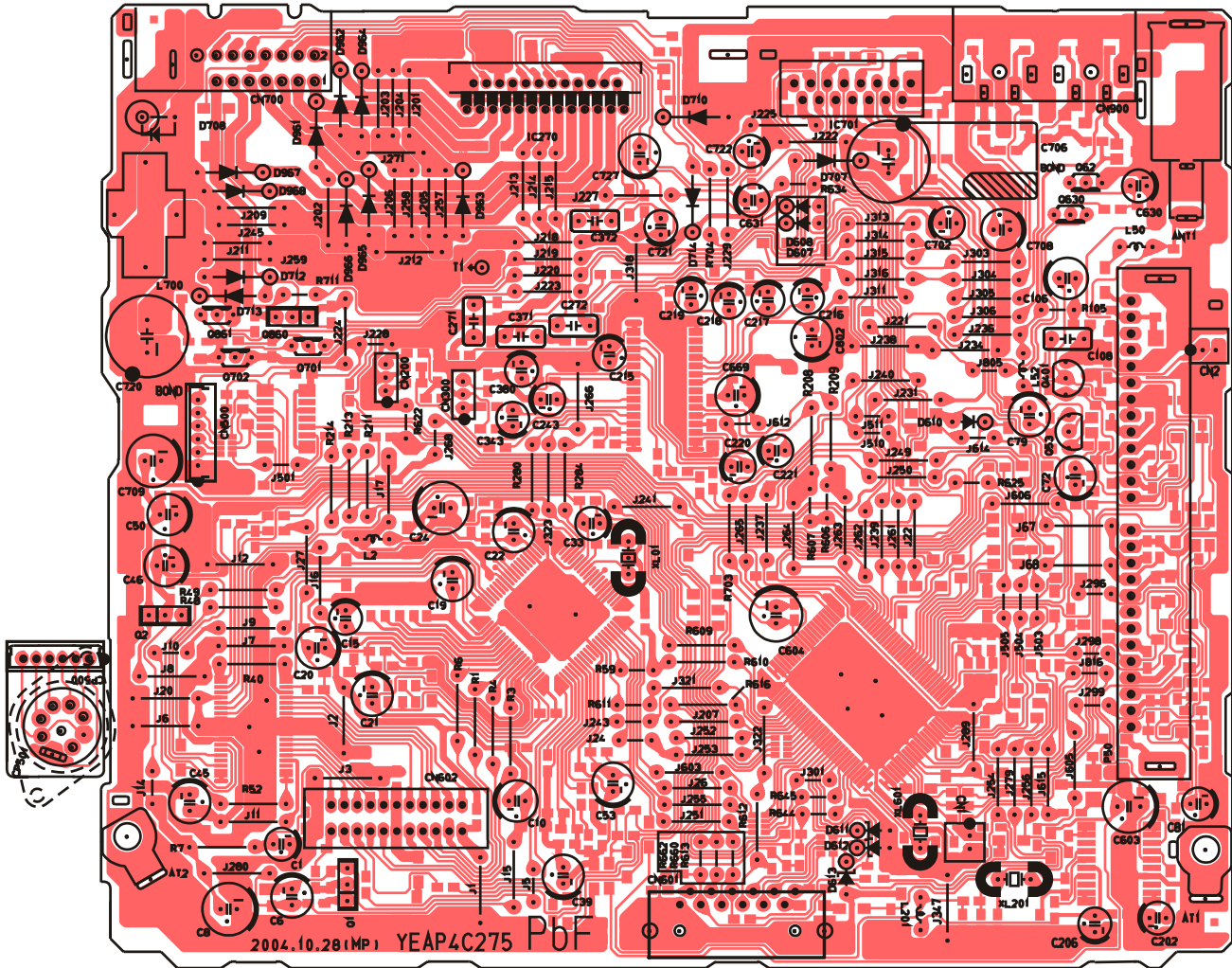
Ref. No.	Part No.	Part Name & Description	Remarks
74	3032 10 40	SW WIRE MN	N(A-1)
75	3032 10 39	SP WIRE MN	N(D-2)
77	3032 10 13	WIRE CLAMPER M	N(C-2); N(C-3); N(D-4); N(E-3)
78	3032 10 28	WIRE TUBE SPM	N(D-2)
79	3032 10 29	WIRE TUBE MSW	N(A-1)
81	3032 11 301	ROLLER SHAFT ASS'Y	N(E-2)
82	3032 11 501	LOADING GEAR PLATE RIVET ASS'Y	N(D-2)
83	3032 11 302	LOADING PLATE ASS'Y	N(C-4)
84	3032 11 504	LOCK ARM RIVET ASS'Y (S)	N(E-1)
85	3032 11 305	LOADING / FEED MOTOR ASS'Y (MB)	T(B-3)
86	3032 11 01	LOADING GEAR 1	N(D-4)
87	3032 11 02	LOADING GEAR 2	N(D-3)
88	3032 11 03	LOADING GEAR 3	N(D-3)
89	3032 11 04	LOADING GEAR 4	N(D-2)
90	3032 11 05	LOADING GEAR 5	N(D-2)
91	3032 11 06	LOADING GEAR 6	N(D-2)
92	3032 11 07	LOADING GEAR 7	N(D-3)
93	3032 11 11	ROLLER GUIDE	N(D-1); N(E-3)
94	3032 11 14	ROLLER GUIDE SPRING	N(D-1); N(E-1)
95	3032 11 16	DISC STOPPER ARM	N(C-1)
96	3032 11 17	DISC STOP ARM SPRING	N(D-2)
97	3032 11 18	LD GEAR BRACKET	N(D-2)
98	3032 11 25	L SLIDE PLATE	N(D-4)
99	3032 11 31	LOADING PLATE SPRING	N(C-4)
100	3032 11 37	LDG ROLLER (N)	T(D-1)
101	3032 11 43	COLLAR SCREW	N(E-1)
111	9P04 20 031	TAPPING SCREW 2X3	N(A-3); N(B-3); N(B-4); N(D-2); N(E-4)
112	9P04 20 041	TAPPING SCREW 2X4	N(B-1); N(B-2)
113	9B03 20 041	TAPPING BIND SCREW 2X4	N(D-2)
114	9C01 17 183	CAMERA SCREW 1.7X1.8	N(B-2)
115	9C01 20 203	CAMERA SCREW 2X2	N(C-3)
116	9C45 17 503	CAMERA TAPPING SCREW P3 M1.7X5	N(C-1)
121	9W01 30 170	PW 3.5X8X0.3	N(D-4)
122	9W05 13 060	HLW 1.85X5X0.13	N(D-1)
123	9W07 10 070	LUMILAR WASHER 3.1X6X0.1	N(D-1)
124	9E01 00 152	E RING S 1.5	N(D-4)
125	9W01 13 020	PW 2.1X4X0.13	N(D-3)

15 EXPLODED VIEW (CD Deck)



16 WIRING DIAGRAM

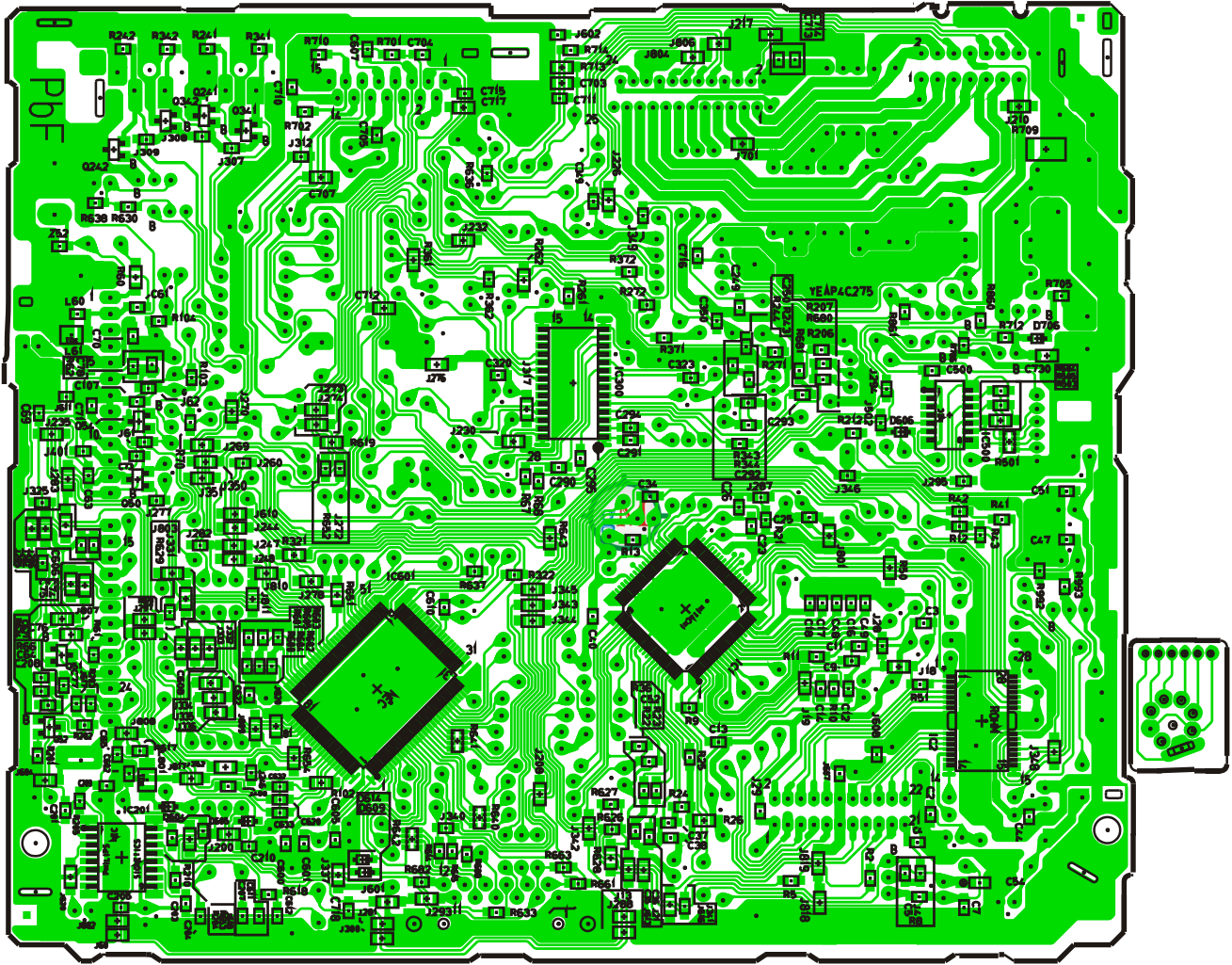
16.1. Main Block-1



[E-4C275] [TOP VIEW]

CQ-C1121W/C1101W/C1001W/C1001W1
CQ-C1121U /C1101U/C1001U Main PCB

16.2. Main Block-2

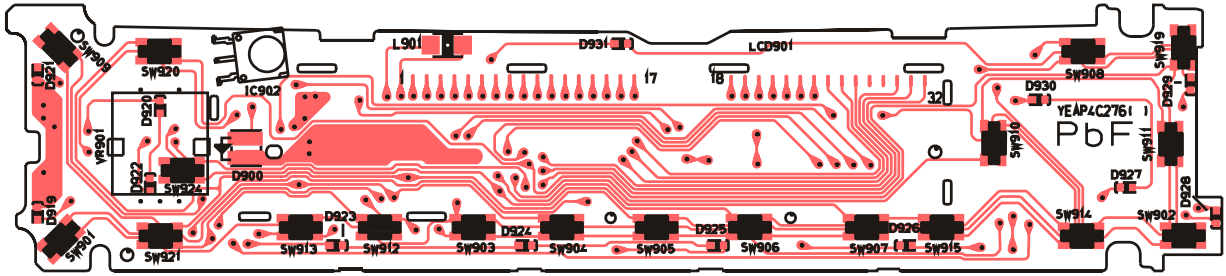


[E-4C275] [BOTTOM VIEW]

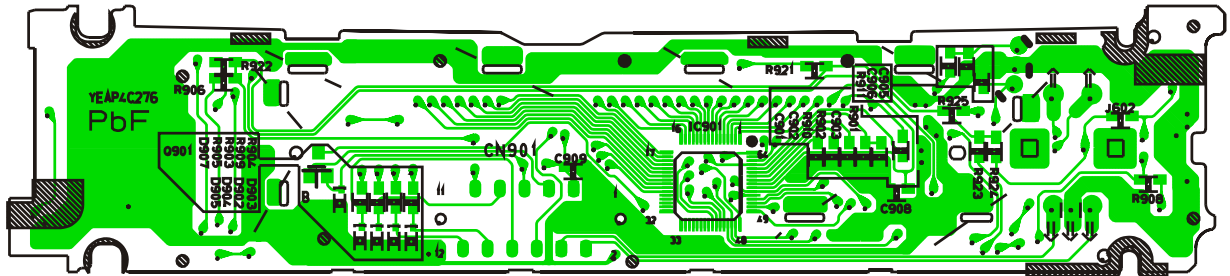
CQ-C1121W/C1101W/C1001W/C1001W1

CQ-C1121U/C1101U/1001U Main PCB

16.3. Display Block



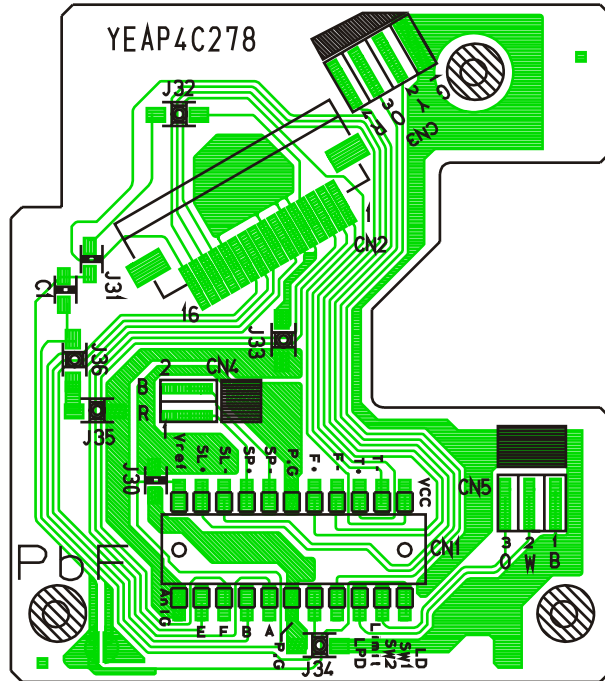
[E-4C276] [TOP VIEW]



[E-4C276] [BOTTOM VIEW]

CQ-C1121W/C1101W/C1001W/C1001W1
CQ-C1121U/C1101U/1001U DISPLAY PCB

16.4. CD Interface Block

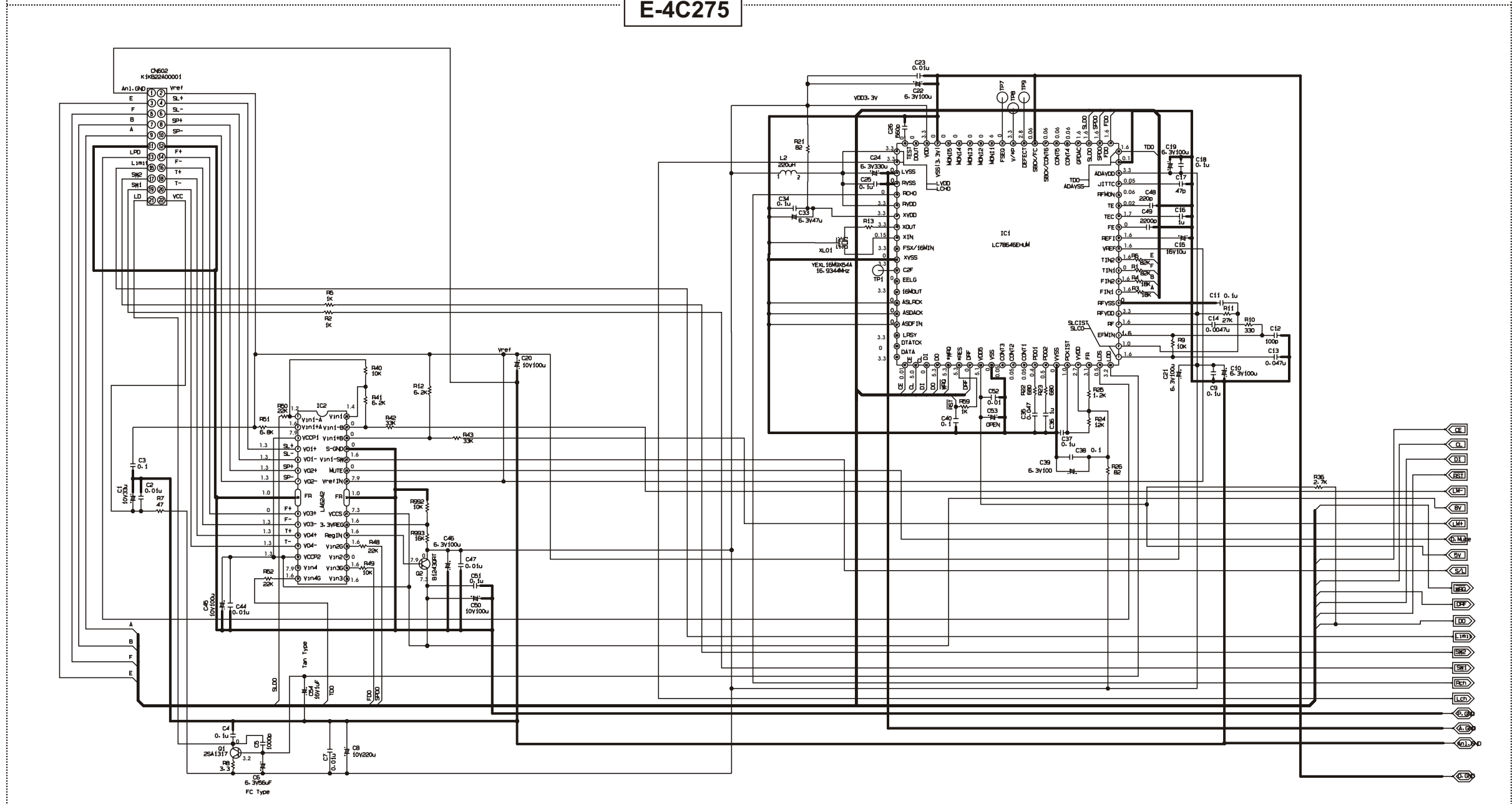


[E-4C278] [BOTTOM VIEW]

**CQ-C1121W/C1101W/C1001W/C1001W1
CQ-C1121U/C1101U/C1001U INTERFACE PCB**

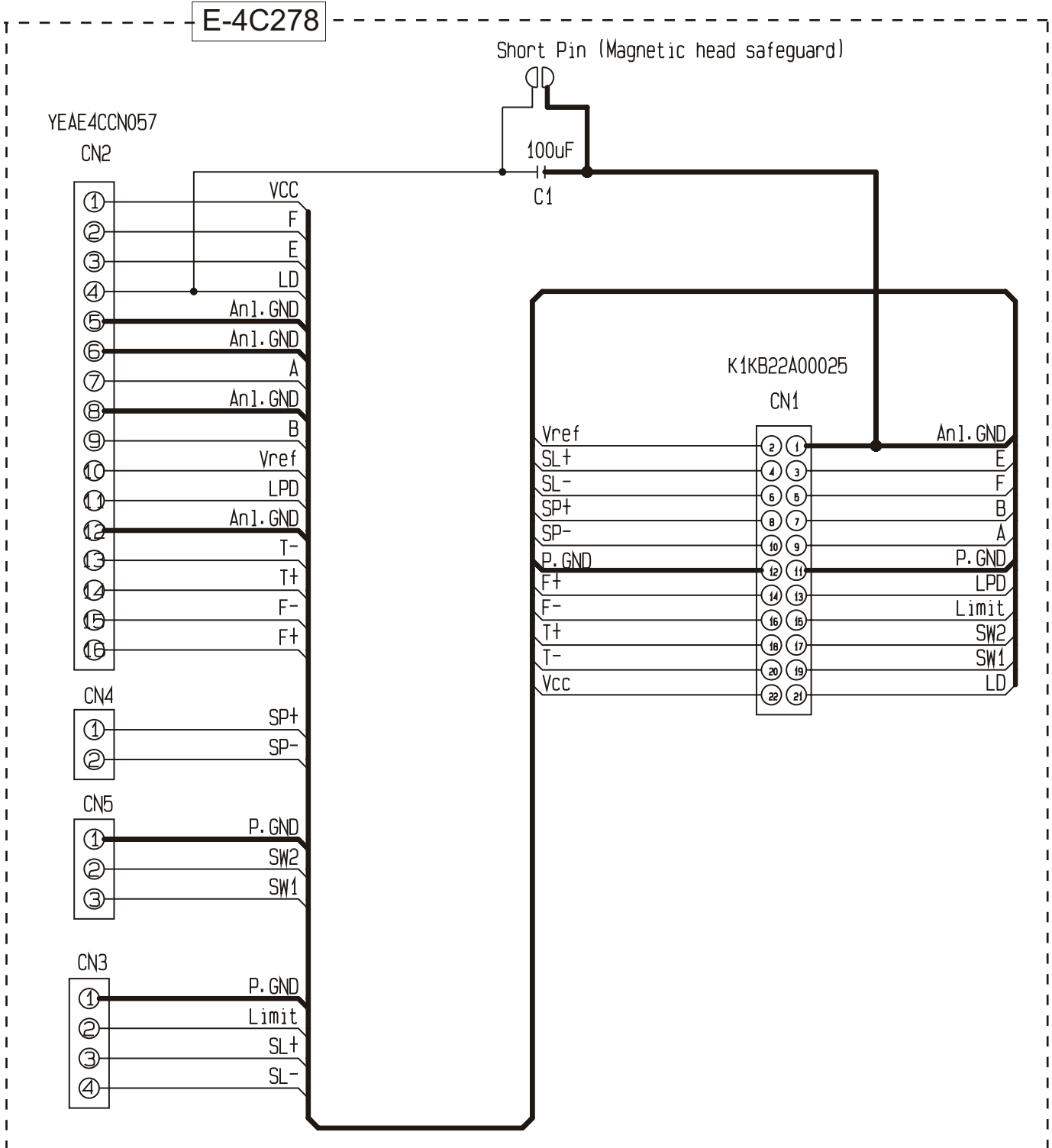
17.2. Main Block

E-4C275



CQ-C1151H/C1141H/C1031H/C1011H/C1021H/C1001H/C1021N/C1011N/C1001N
CQ-C1121U/C1121W/C1101U/C1101W/C1101D/C1001U/C1001W Main Block

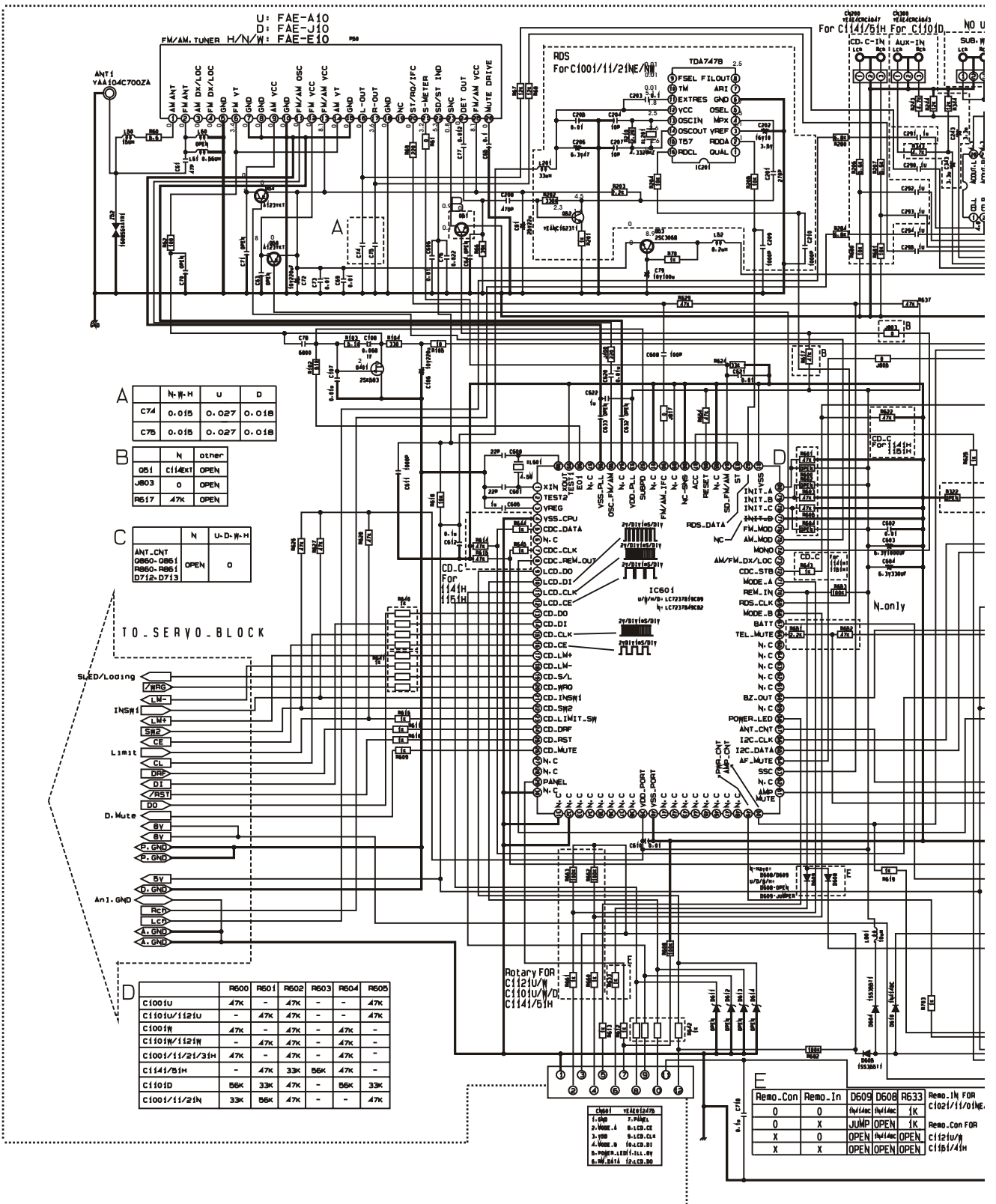
18.2. CD Servo Block-1



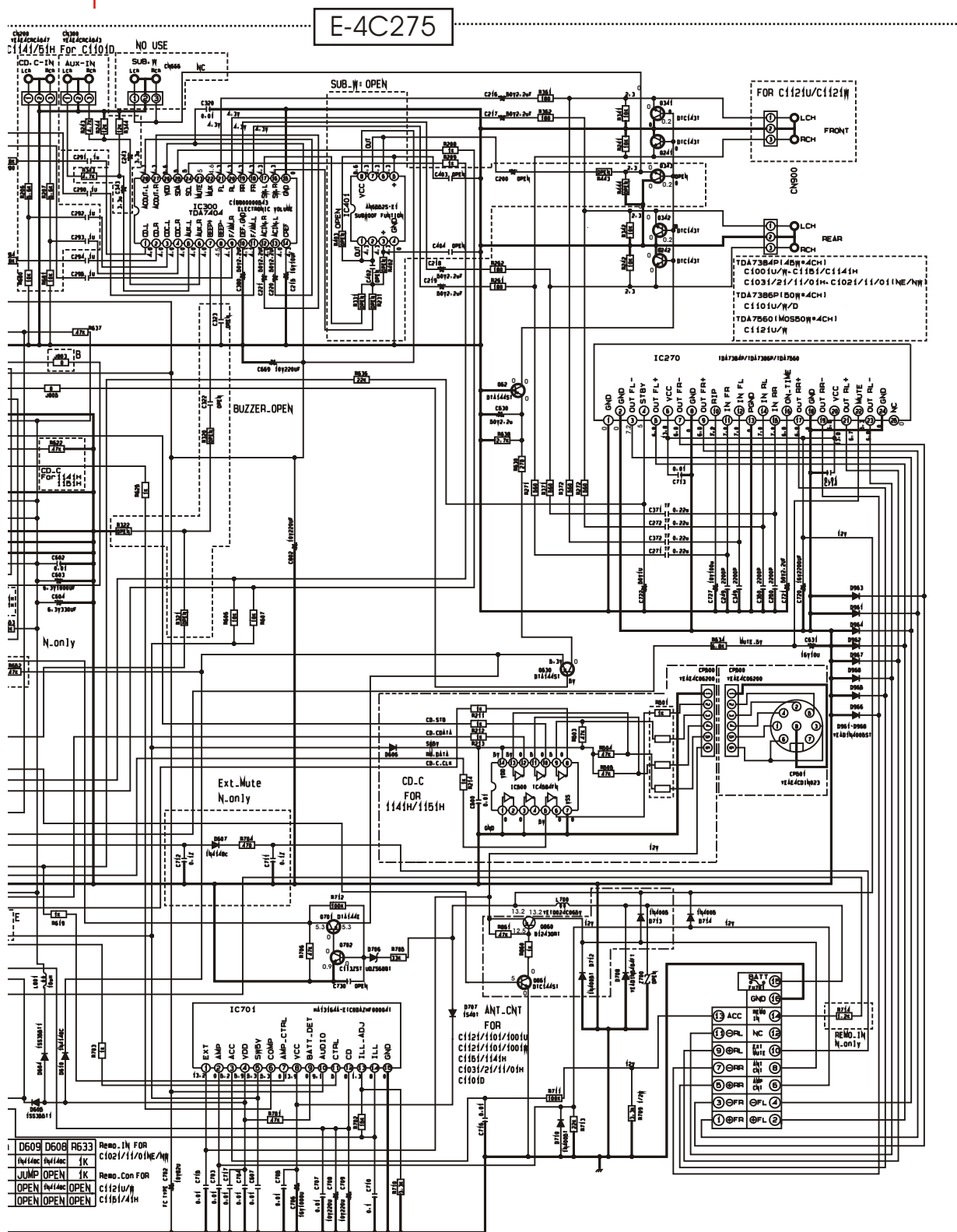
CQ-C1021U/W /C1101U/W/D/C1001U/W /C1151H/C1141H/C1031H/C1011H
 /C1021H/C1001H /C1021N/C1011N/C1001N CD Servo Block

19 SCHEMATIC DIAGRAM for printing with A4 size

19.1. Main Block (Left Side)



19.2. Main Block (Right Side)



CQ-C1021U/C1101U/C1001U/CC115H/C1141H/C1031H/C1011H/C1021H/C1001H

CQ-C1021N/C1011N/C1001N /C1101D Main Block