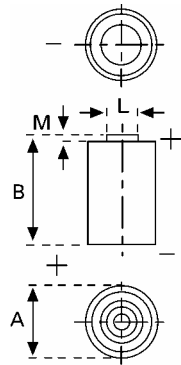


Data Sheet



Type Number 6205
Designation IEC CR 17345
System Li-Manganese dioxide / Organic Electrolyte

UL Recognition:..... MH 13654 (N)
Nominal Voltage 3 V
Typical Capacity C 1550 mAh
 Load 100 Ohm, at 20 °C down to 2 V

Weight (approx.) 17 g
Volume 7 ccm
Coding..... Date of Manufacturing Month / Year

Temperature Ranges

	min	max.
Storage	-20 °C	45 °C
Discharge	-40 °C	70 °C ^{*)}

Dimensions

	min	max.
Diameter (A)	16,4	17,0
Height (B)	33,8	34,5
Shoulder Diameter[L].....	6,2	6.4
Shoulder Height [M].....	1,18	1,23

Segment Electronic

Main Applications Photo Electronic Devices

Typical Capacities (at 20 °C)

Discharge Type	Load	End Voltage: 2.0 V
Continuous 24h/d,7d/w	100 Ω	Capacity [mAh]: 1550

^{*)} Typical temperature range is -20 °C to +60 °C, contact VARTA if the application is intended to be outside the range of -20 °C to +60 °C.

All Data contained herein is for single cells
 For battery applications, performance data may vary from single cell data, depending on specific battery configuration