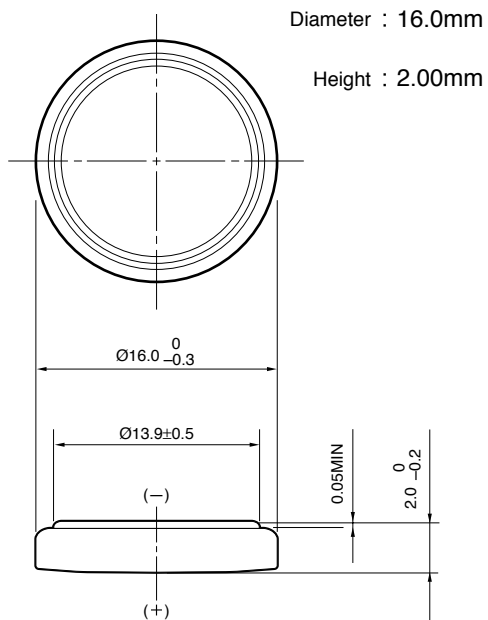


Lithium Manganese Dioxide Battery

CR1620

■ Dimensions (mm)



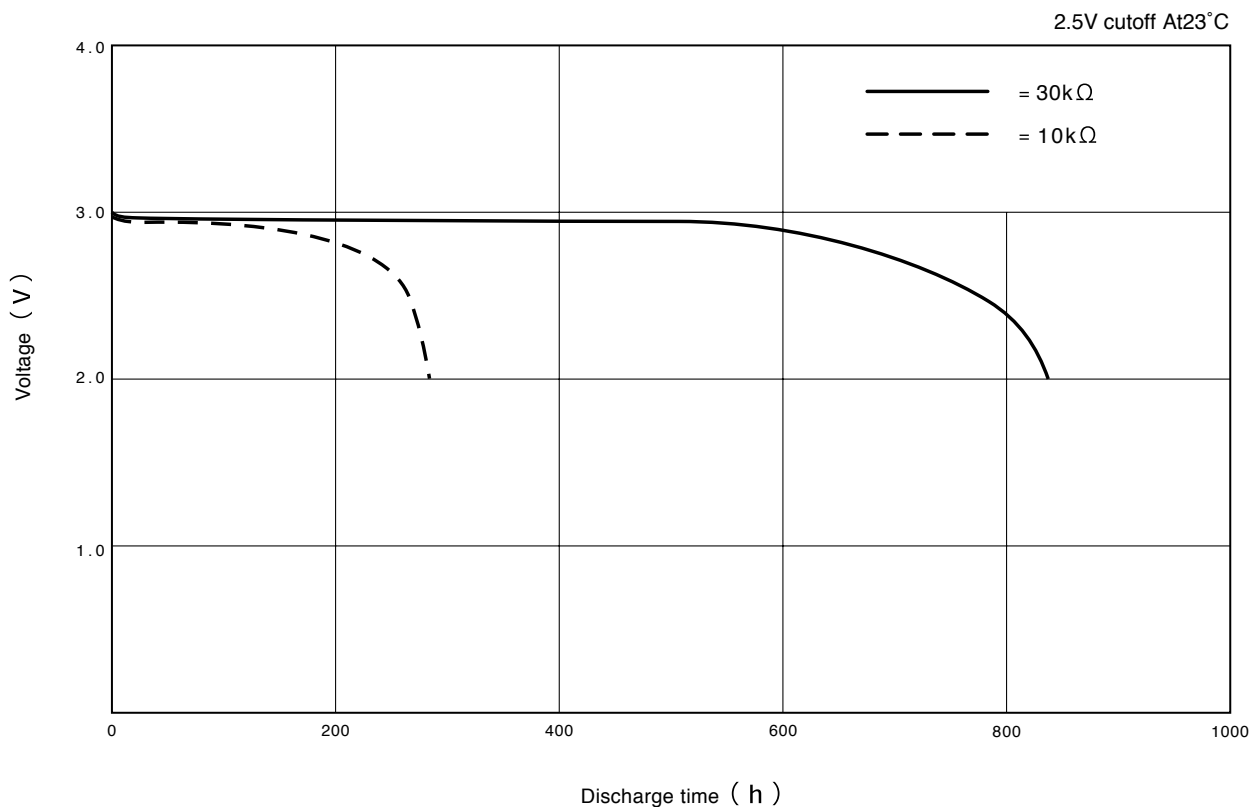
■ Specifications

| | |
|--------------------------------|--------------|
| Nominal Voltage | 3V |
| Nominal Capacity (2.5V cutoff) | 75mAh |
| Recommended Continuous Drain | 0.1mA |
| Recommended Pulse Drain | 5mA |
| Weight | 1.2g |

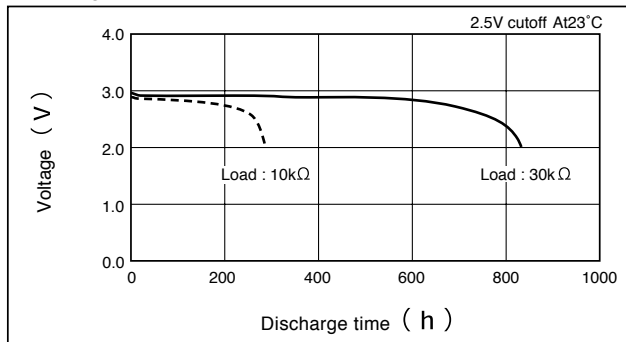
Applications

- Electronic Watch or Clock
- Electronic Calculator
- Memory Back-up Power Source for SRAM or Real Time Clock (RTC)

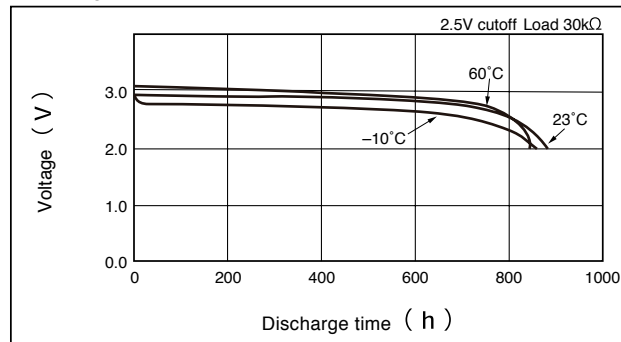
■ Discharge Characteristics



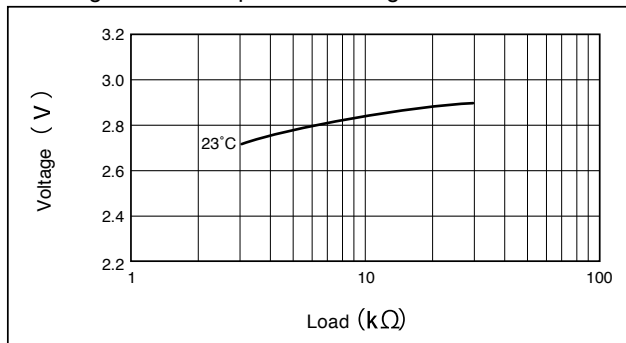
Discharge Characteristics on Load



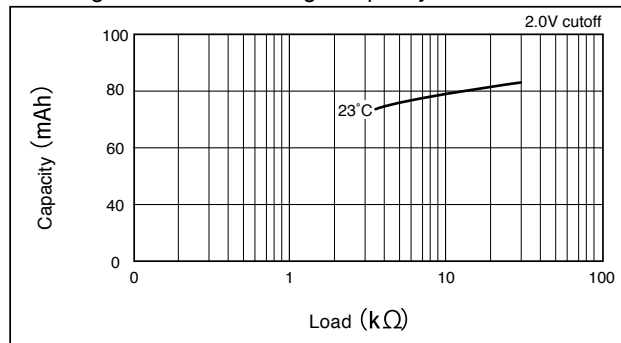
Discharge Characteristics on Temperature



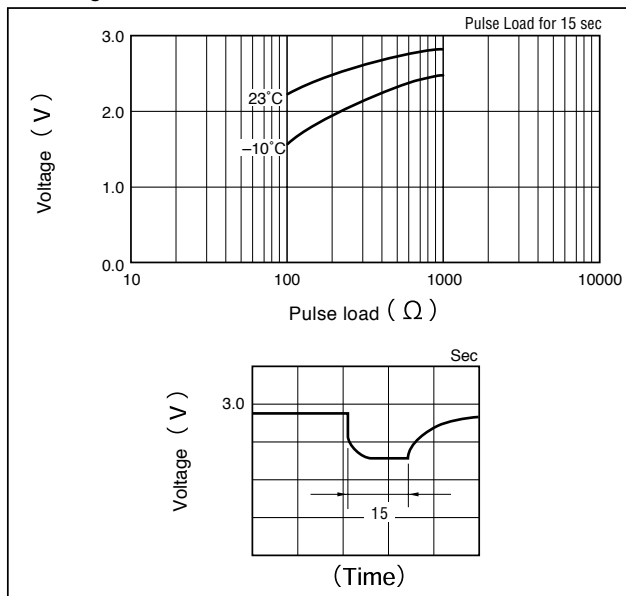
Discharge Load vs. Operation Voltage (Discharge depth 40%)



Discharge Load vs. Discharge Capacity



Discharge Characteristics on Pulse Load (Discharge depth 40%)



Storage Characteristics

