

## Specification of CR2430

Coin Type Crimp-sealed  
Primary Lithium Battery

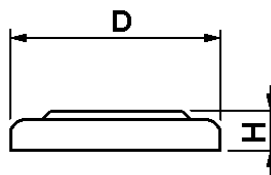
Nominal Capacity * <sup>1</sup>		280 mAh
Nominal Voltage		3 V
Standard Discharge Current		0,3 mA
Max. Discharge Current	Continuous * <sup>2</sup>	6 mA
	Pulse * <sup>3</sup>	50 mA
Temperature Range		-20°C ~ +70°C
Weight		4,0 g
Dimensions	Height (H)	3,0 mm
	Diameter (D)	24,5 mm

\*1 Nominal capacity is determined to an end voltage of 2,0V when the battery is allowed to discharge at a standard current level at 23°C.

\*2 Current value is determined so that 50% of the nominal capacity is obtained with an end voltage of 2,0V at 23°C.

\*3 Current value for obtaining 2,0V cell voltage when 15 sec. pulse applied at 50% discharge depth (23°C).

Dimensions



Size:

D = 24,5<sub>-0,2</sub>

H = 3,0<sub>-0,3</sub>

(unit: mm)